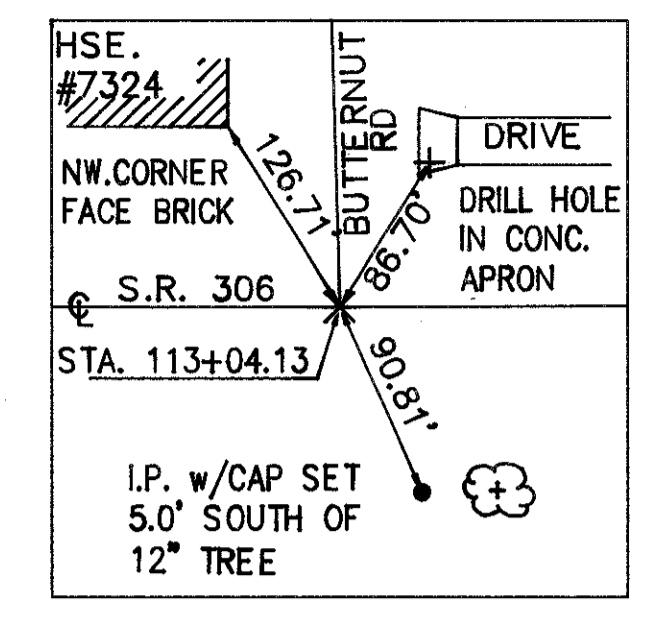
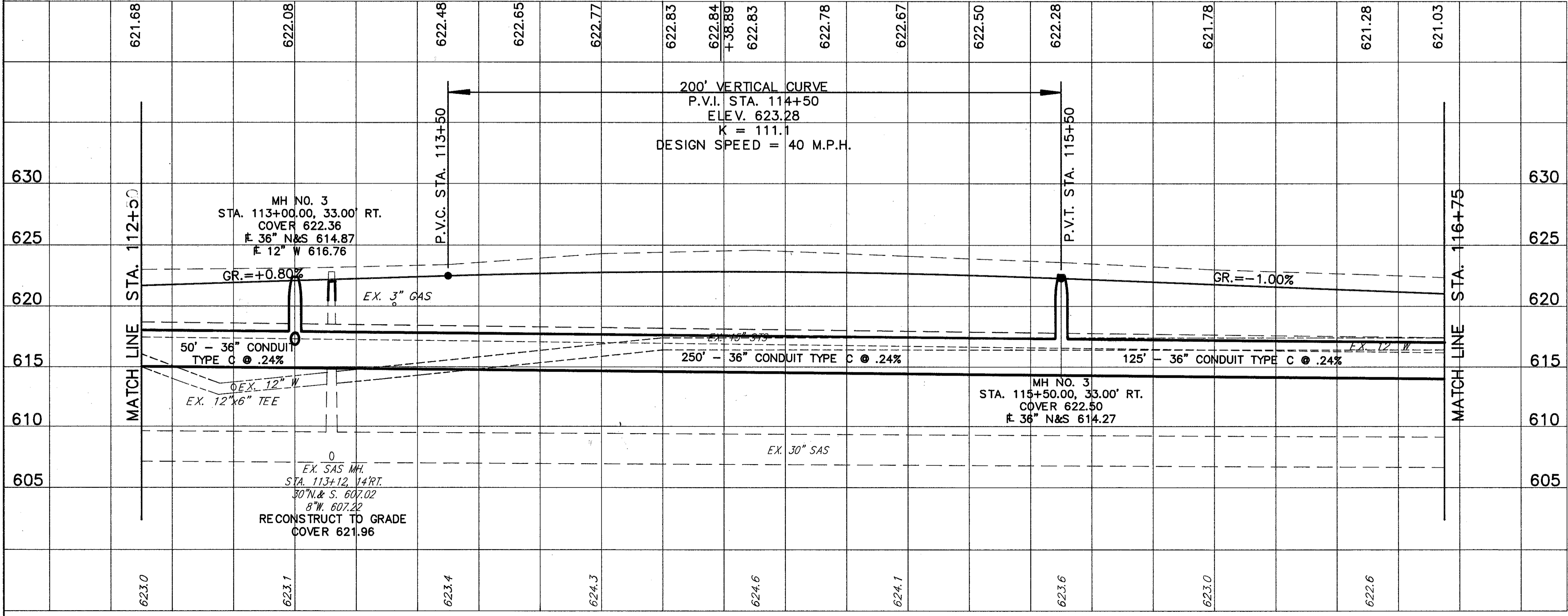


BENCHMARK: TOP OF HYDRANT  
 SW CORNER BUTTERNUT LN. &  
 SR 306 ELEV. 623.61



FOR TYPICAL SECTIONS SEE SHEET 6  
 FOR CROSS SECTIONS SEE SHEET 196-199  
 FOR SIGNING PLAN SEE SHEET 363-365  
 FOR PAVEMENT MARKING DETAILS SEE SHEET 352-353  
 FOR UNDERDRAIN QUANTITIES SEE SHEET 52-55  
 FOR CATCH BASIN DETAILS SEE SHEET 323  
 FOR DRIVEWAY DETAILS SEE SHEET 333-334  
 FOR DRIVEWAY PROFILES SEE SHEET 284-285  
 FOR STORM SEWER CONNECTION SCHEDULE SEE SHEET 68-70  
 FOR SANITARY SEWER CONNECTION SCHEDULE SEE SHEET 71-73  
 FOR I-1 INLET QUANTITIES SEE SHEET 82  
 FOR SIDESTREET PLAN & PROFILE SEE SHEET 137  
 FOR INTERSECTION DETAILS SEE SHEET 310  
 FOR SANITARY SEWER DETAILS SEE SHEET 329-331

ROADWAY				202	604	202
REF.	LOCATION	S.F.	EACH	WALK REMOVED	MONUMENT ASSEMBLIES	PIPE REMOVED (2" & UNDER)
R-1	STA. 113+04.18 @		1			
R-2	STA. 112+50.00 TO STA. 114+56.00, RT.	206				
R-3	STA. 112+50.00 TO STA. 116+75.00, 18' RT.					425
TOTALS				206	1	425



REF.	LOCATION	CONDUIT	LENGTH	MANHOLE	DEPTH	COVER	REMARKS
604	STA. 113+00.00, 33.00' RT.	36" N&S	614.87	EA			RECONSTRUCTED TO GRADE, AS PER PLAN
604	STA. 113+12.00, 14.00' RT.	36" N&S	607.02	EA			CATCH BASIN NO. 3A AS PER PLAN
604	STA. 113+12.00, 14.00' RT.	36" N&S	607.02	EA			MANHOLE NO. 3
603	STA. 113+00.00, 33.00' RT.	36" CONDUIT, TYPE C	706.02	EA			36" CONDUIT, TYPE C 706.02 WITH JOINTS AS PER 706.11
603	STA. 113+00.00, 33.00' RT.	36" CONDUIT, TYPE C	706.02	EA			36" CONDUIT, TYPE C 706.02
603	STA. 115+50.00, 33.00' RT.	12" CONDUIT, TYPE B	706.02	EA			12" CONDUIT, TYPE B 706.02
TOTALS							