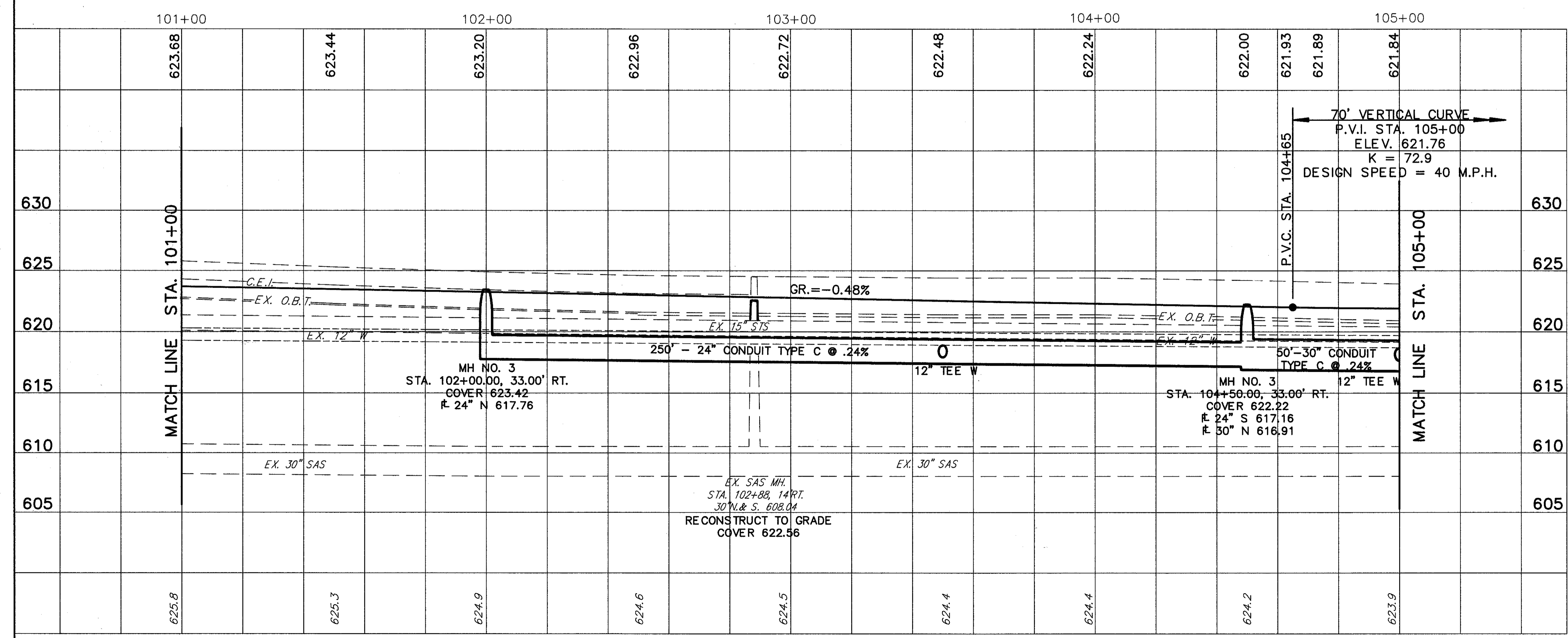


FOR TYPICAL SECTIONS SEE SHEET 6  
FOR CROSS SECTIONS SEE SHEET 189-191  
FOR SIGNING PLAN SEE SHEET 363-365  
FOR PAVEMENT MARKING DETAILS SEE SHEET 352-353  
FOR UNDERDRAIN QUANTITIES SEE SHEET 52-55  
FOR CATCH BASIN DETAILS SEE SHEET 323  
FOR DRIVEWAY DETAILS SEE SHEET 333-334  
FOR DRIVEWAY PROFILES SEE SHEET 281  
FOR STORM SEWER CONNECTION SCHEDULE SEE SHEET 68-70  
FOR SANITARY SEWER DETAILS SEE SHEET 329-331

ROADWAY				202	202
REF.	LOCATION	S.F.	LF.	WALK REMOVED	PIPE REMOVED (24" & UNDER)
R-1	STA. 101+00.00 TO STA. 105+00.00, LT.	2,000			
R-2	STA. 101+00.00 TO STA. 105+00.00, RT.	2,000			
R-2	STA. 101+00.00 TO STA. 105+00.00, 18' RT.		400		
<b>TOTALS</b>				<b>4,000</b>	<b>400</b>



REF.	LOCATION	EA.	LF.	EA.	LF.	EA.	LF.	EA.	LF.	EA.	LF.	EA.	LF.	EA.	LF.	EA.	LF.
604	TEE 30" X 12" X 30"	EA.		EA.		EA.		EA.		EA.		EA.		EA.		EA.	
604	TEE 24" X 12" X 24"	EA.		EA.		EA.		EA.		EA.		EA.		EA.		EA.	
604	MANHOLE RECONSTRUCTED TO GRADE, AS PER PLAN	EA.		EA.		EA.		EA.		EA.		EA.		EA.		EA.	
604	CATCH BASIN NO. 3 AS PER PLAN	EA.		EA.		EA.		EA.		EA.		EA.		EA.		EA.	
604	CATCH BASIN NO. 3A AS PER PLAN	EA.		EA.		EA.		EA.		EA.		EA.		EA.		EA.	
604	MANHOLE NO. 3	EA.		EA.		EA.		EA.		EA.		EA.		EA.		EA.	
603	30" CONDUIT, TYPE C 706.02	LF.		LF.		LF.		LF.		LF.		LF.		LF.		LF.	
603	24" CONDUIT, TYPE C 706.02	LF.	250	LF.		LF.		LF.		LF.		LF.		LF.		LF.	
603	12" CONDUIT, TYPE C 706.02	LF.		LF.	7	LF.		LF.		LF.		LF.		LF.		LF.	
603	12" CONDUIT, TYPE B 706.02	LF.		LF.		LF.	50	LF.		LF.		LF.		LF.		LF.	
<b>TOTALS</b>																	

DRAINAGE & SANITARY		LOCATION	EA.	LF.	EA.	LF.
D-1	STA. 102+00.00, 33.00' RT. TO STA. 104+50.00, 33.00' RT.					
D-2	STA. 103+50.00, 26.00' LT. TO STA. 103+50.00, 26.00' RT.					
D-3	STA. 103+50.00, 26.00' LT. TO STA. 103+50.00, 33.00' RT.					
D-4	STA. 105+00.00, 26.00' LT. TO STA. 105+00.00, 26.00' RT.					
D-5	STA. 105+00.00, 26.00' LT. TO STA. 105+00.00, 33.00' RT.					
D-6	STA. 104+50.00, 33.00' RT. TO STA. 105+00.00, 33.00' RT.					
S-1	STA. 102+88.00, 14.00' RT.					
<b>TOTALS</b>						

PLAN & PROFILE STA. 101+00 TO STA. 105+00