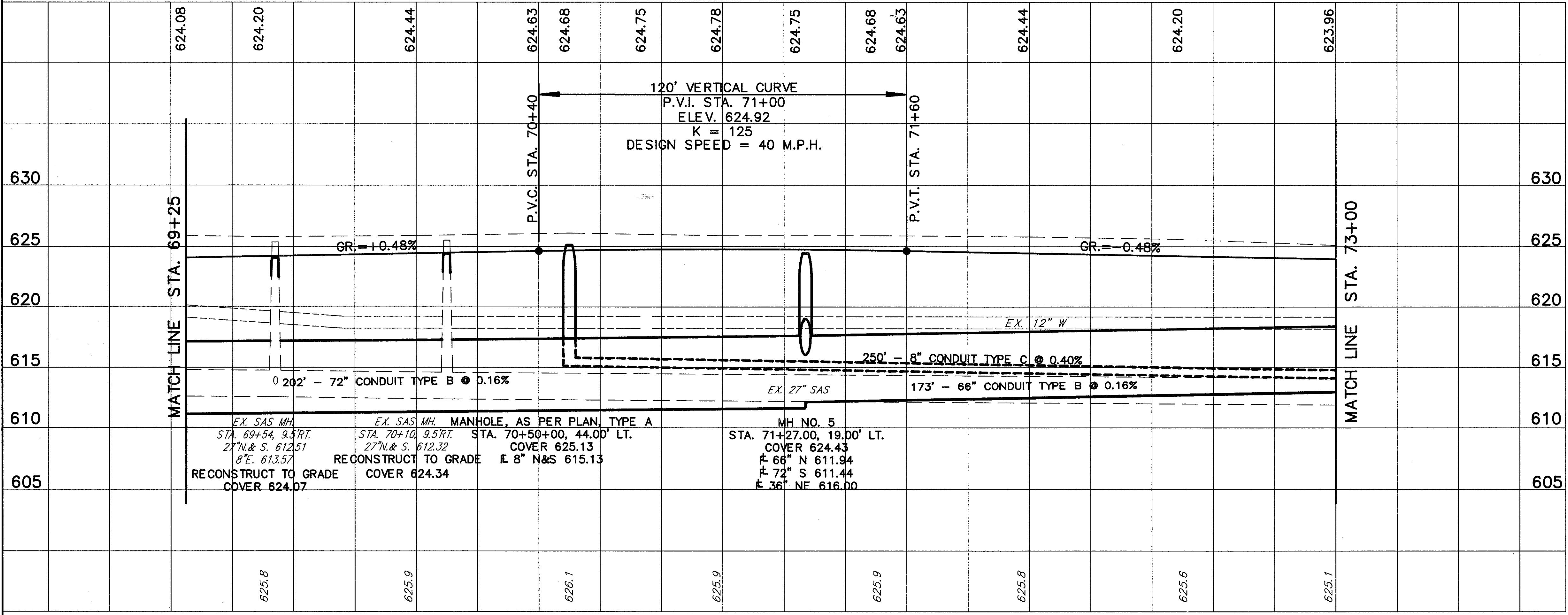


FOR TYPICAL SECTIONS SEE SHEET 5-6  
 FOR CROSS SECTIONS SEE SHEET 173-175  
 FOR SIGNING PLAN SEE SHEET 363-365  
 FOR PAVEMENT MARKING DETAILS SEE SHEET 352-353  
 FOR UNDERDRAIN QUANTITIES SEE SHEET 52-55  
 FOR DRIVEWAY DETAILS SEE SHEET 333-334  
 FOR DRIVEWAY PROFILES SEE SHEET 275-276  
 FOR STORM SEWER CONNECTION SCHEDULE SEE SHEET 68-70  
 FOR SANITARY SEWER CONNECTION SCHEDULE SEE SHEET 71-73  
 FOR I-1 INLET QUANTITIES SEE SHEET 82  
 FOR SANITARY SEWER DETAILS SEE SHEET 329-331

ROADWAY			PIPE REMOVED (24" & UNDER)
REF.	LOCATION	LF.	
R-1	STA. 69+54.00 TO STA. 69+87.00, 20' RT.	33	
R-2	STA. 70+07.00 TO STA. 70+38.00, 20' RT.	31	
R-3	STA. 72+06.00 TO STA. 72+68.00, 20' RT.	62	
TOTALS			126



REF.	LOCATION	UN.	EA.	LF.	EA.	LF.	EA.	LF.
604	36" PLUG	1						
604	MANHOLE RECONSTRUCTED TO GRADE, AS PER PLAN							
604	MANHOLE AS PER PLAN, TYPE A							
603	8" CONDUIT TYPE C AS PER PLAN, 706.08 WITH JOINTS AS PER 706.12	250						
604	MANHOLE NO. 5	1						
603	72" CONDUIT, TYPE B, 706.02			202				
603	66" CONDUIT, TYPE B, 706.02			173				
603	36" CONDUIT, TYPE B, 706.02			51				
TOTALS								

DRAINAGE & SANITARY	
REF.	LOCATION
D-1	STA. 69+25.00, 19.00' LT. TO STA. 71+27.00, 19.00' LT.
D-2	STA. 71+27.00, 19.00' LT. TO STA. 71+23.00, 32.00' RT.
D-3	STA. 71+27.00, 19.00' LT. TO STA. 73+00.00, 19.00' LT.
S-1	STA. 70+50.00, 44.00' LT. TO STA. 73+00.00, 44.00' LT.
S-2	STA. 69+54.00, 9.50' RT.
S-3	STA. 70+10.00, 9.50' RT.
TOTALS	

PLAN & PROFILE STA. 69+25 TO STA. 73+00