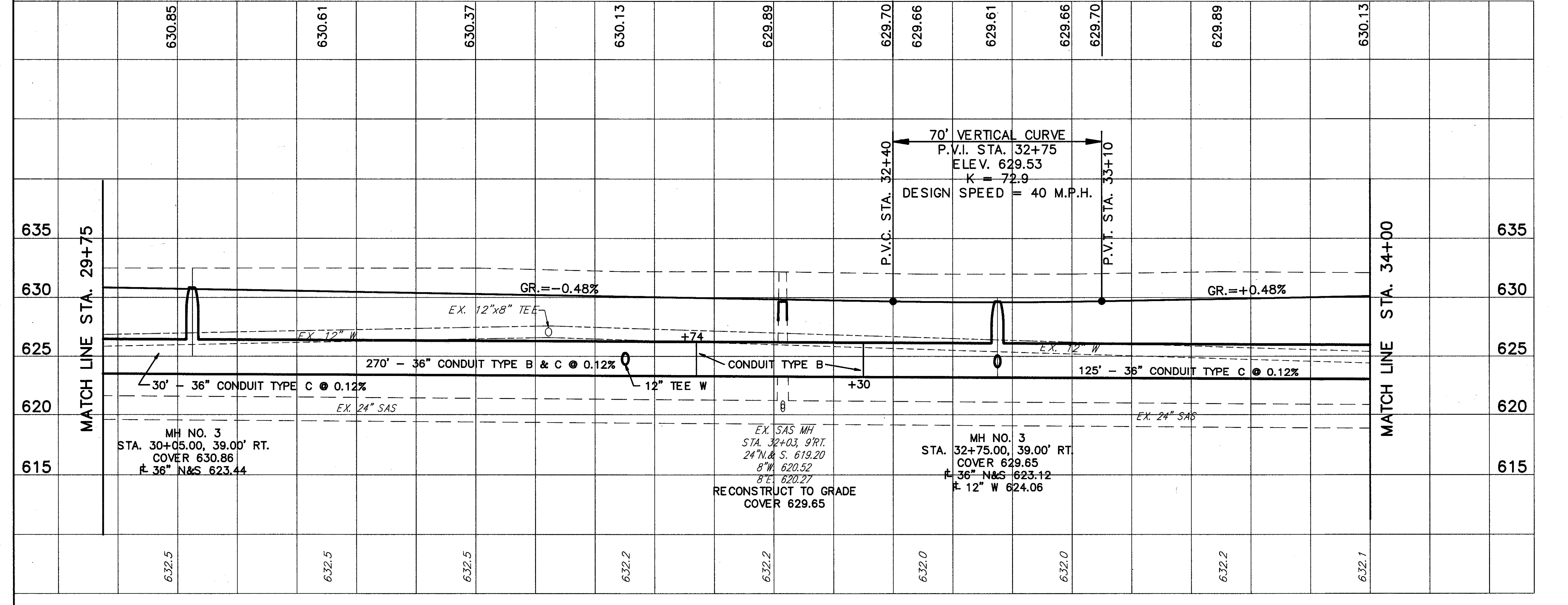


BENCHMARK: TOP OF HYDRANT  
SW CORNER BROWNELL DR. &  
SR 306 ELEV. 633.87

FOR TYPICAL SECTIONS SEE SHEET 5  
FOR CROSS SECTIONS SEE SHEET 151-153  
FOR SIGNING PLAN SEE SHEET 363-365  
FOR PAVEMENT MARKING DETAILS SEE SHEET 352-353  
FOR UNDERDRAIN QUANTITIES SEE SHEET 52-55  
FOR CATCH BASIN DETAILS SEE SHEET 323  
FOR DRIVEWAY DETAILS SEE SHEET 333-334  
FOR DRIVEWAY PROFILES SEE SHEET 262-263  
FOR STORM SEWER CONNECTION SCHEDULE SEE SHEET 68-70  
FOR SANITARY SEWER CONNECTION SCHEDULE SEE SHEET 71-73  
FOR I-1 INLET QUANTITIES SEE SHEET 82  
FOR SIDESTREET PLAN & PROFILE SEE SHEET 123  
FOR INTERSECTION DETAILS SEE SHEET 303  
FOR SANITARY SEWER DETAILS SEE SHEET 329-331

ROADWAY		PIPE REMOVED (24" & UNDER)	WALK REMOVED	MONUMENT ASSEMBLIES
REF.	LOCATION	L.F.	S.F.	EACH
R-1	STA. 30+29.00 TO STA. 30+59.00, 31' RT.	30		
R-2	STA. 30+47.00 TO STA. 30+89.00, 24' LT.	22		
R-3	STA. 31+72.00 TO STA. 32+29.00, 30' RT.	57		
R-4	STA. 31+72.00 TO STA. 32+33.00, 24' LT.	61		
R-5	STA. 32+92.00 TO STA. 33+29.00, 30' RT.	27		
R-6	STA. 31+77.00 TO STA. 32+85.00, RT.		60	
R-7	STA. 30+06.64 C			1
R-8	STA. 32+02.34 C			1
<b>TOTALS</b>		<b>197</b>	<b>60</b>	<b>2</b>



DRAINAGE & SANITARY		LOCATION	REF.	QUANTITY	UNIT	TOTAL
D-1	36" CONDUIT, TYPE C, 706.02	STA. 29+75.00, 39.00' RT. TO STA. 30+05.00, 39.00' RT.	30	1	EA.	1
D-2	36" CONDUIT, TYPE B, 706.02	STA. 30+47.00, 24.00' LT. TO STA. 30+89.00, 24.00' LT.	56	1	EA.	1
D-3	12" CONDUIT, TYPE C, 706.02	STA. 31+72.00, 30.00' RT. TO STA. 32+29.00, 30.00' RT.	80	1	EA.	1
D-4	12" CONDUIT, TYPE B, 706.02	STA. 31+72.00, 24.00' LT. TO STA. 32+33.00, 24.00' LT.	33	1	EA.	1
D-5	36" CONDUIT, TYPE C, 706.02	STA. 32+92.00, 30.00' RT. TO STA. 33+29.00, 30.00' RT.	60	1	EA.	1
D-6	36" CONDUIT, TYPE B, 706.02	STA. 31+77.00, 60.00' RT. TO STA. 32+85.00, 60.00' RT.	7	1	EA.	1
D-7	36" CONDUIT, TYPE C, 706.02	STA. 30+06.64 C	1	1	EA.	1
D-8	36" CONDUIT, TYPE B, 706.02	STA. 32+02.34 C	1	1	EA.	1
D-9	36" CONDUIT, TYPE C, 706.02	STA. 32+02.34 C	1	1	EA.	1
S-1	MANHOLE, NO. 3	STA. 30+05.00, 39.00' RT. COVER 630.86		1	EA.	1
S-1	MANHOLE, NO. 3	EX. SAS MH STA. 32+03, 9 RT. 24" N. & S. 619.20 8" W. 620.52 8" E. 620.27		1	EA.	1
S-1	MANHOLE, NO. 3	STA. 32+75.00, 39.00' RT. COVER 629.65		1	EA.	1
S-1	MANHOLE, NO. 3	RECONSTRUCT TO GRADE COVER 629.65		1	EA.	1
S-1	MANHOLE, NO. 3	EX. 12" W 624.06		1	EA.	1
<b>TOTALS</b>			<b>177</b>	<b>75</b>	<b>EA.</b>	<b>177</b>