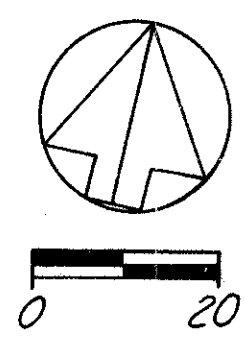


TRACT 13, TOWNSHIP 10, RANGE 9  
CONNECTICUT WESTERN RESERVE  
CITY OF MENTOR

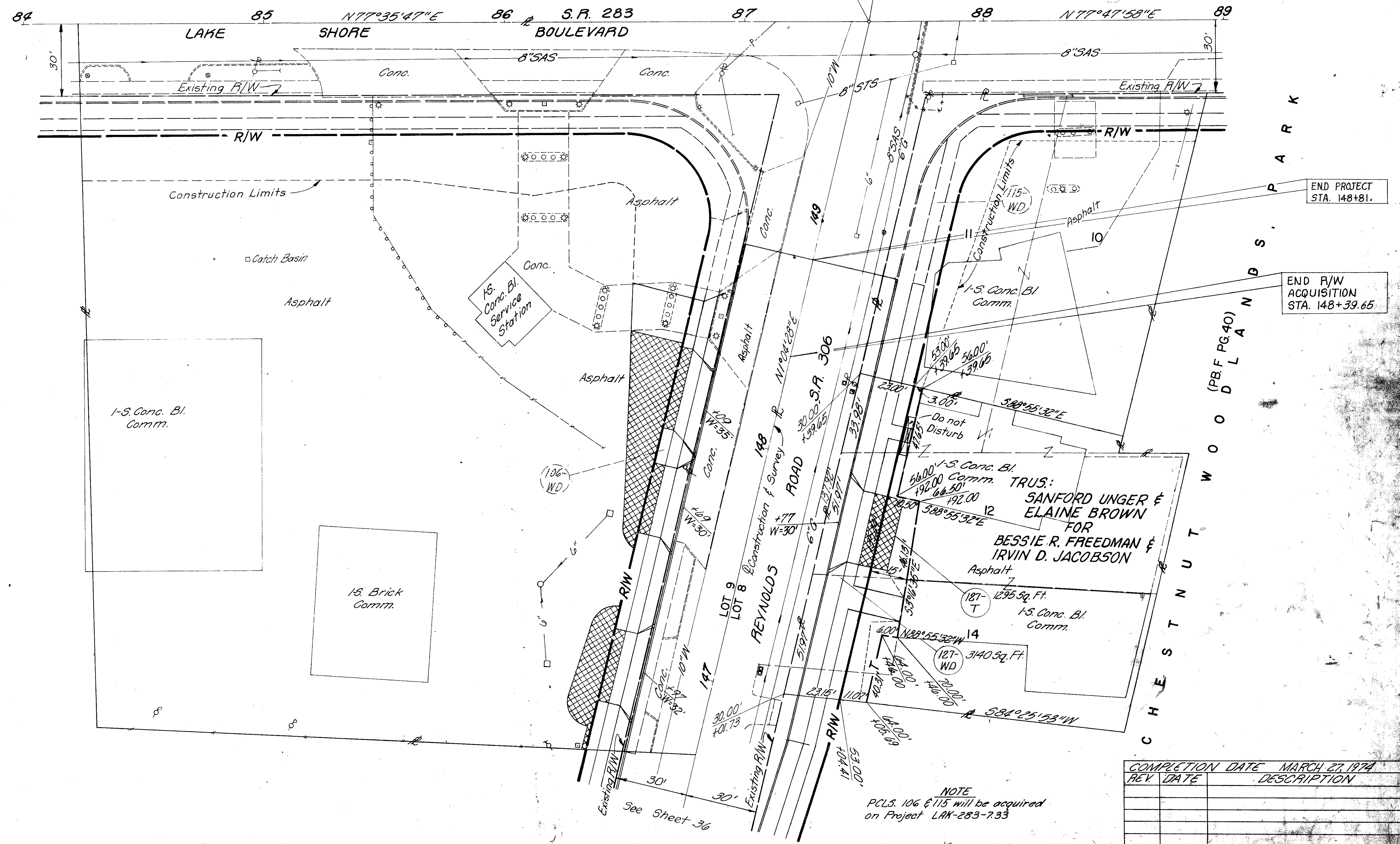


FED. RD. DIVISION	STATE	PROJECT
2	OHIO	

LAK-306-6.91

73  
13  
37  
37

Sta. 149+83.45 S.R. 306  
Sta. 87+52.21 S.R. 283



END PROJECT  
STA. 148+81.

END R/W  
ACQUISITION  
STA. 148+39.65

TRUS:  
SANFORD UNGER &  
ELAINE BROWN  
FOR  
BESSIE R. FREEDMAN &  
IRVIN D. JACOBSON

REV	DATE	DESCRIPTION

NOTE  
P.C.S. 106 & 115 will be acquired  
on Project LAK-283-7.33

RIGHT OF WAY 147+00 TO 148+50

1-S. Conc. Bl.  
Comm.

15. Brick  
Comm.

15. Conc. Bl.  
Service  
Station

1-S. Conc. Bl.  
Comm.

127-  
1295 Sq. Ft.  
1-S. Conc. Bl.  
Comm.

127-  
3140 Sq. Ft.  
WD

See Sheet 36