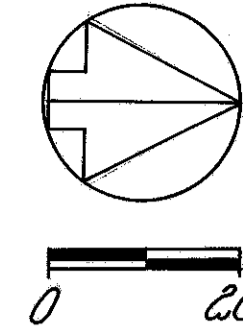


TRACT 13, TOWNSHIP 10, RANGE 9
CONNECTICUT WESTERN RESERVE
CITY OF MENTOR

The following parcels were
acquired by the City of Mentor
for Project LAK-306-706
109-WD 110-WD

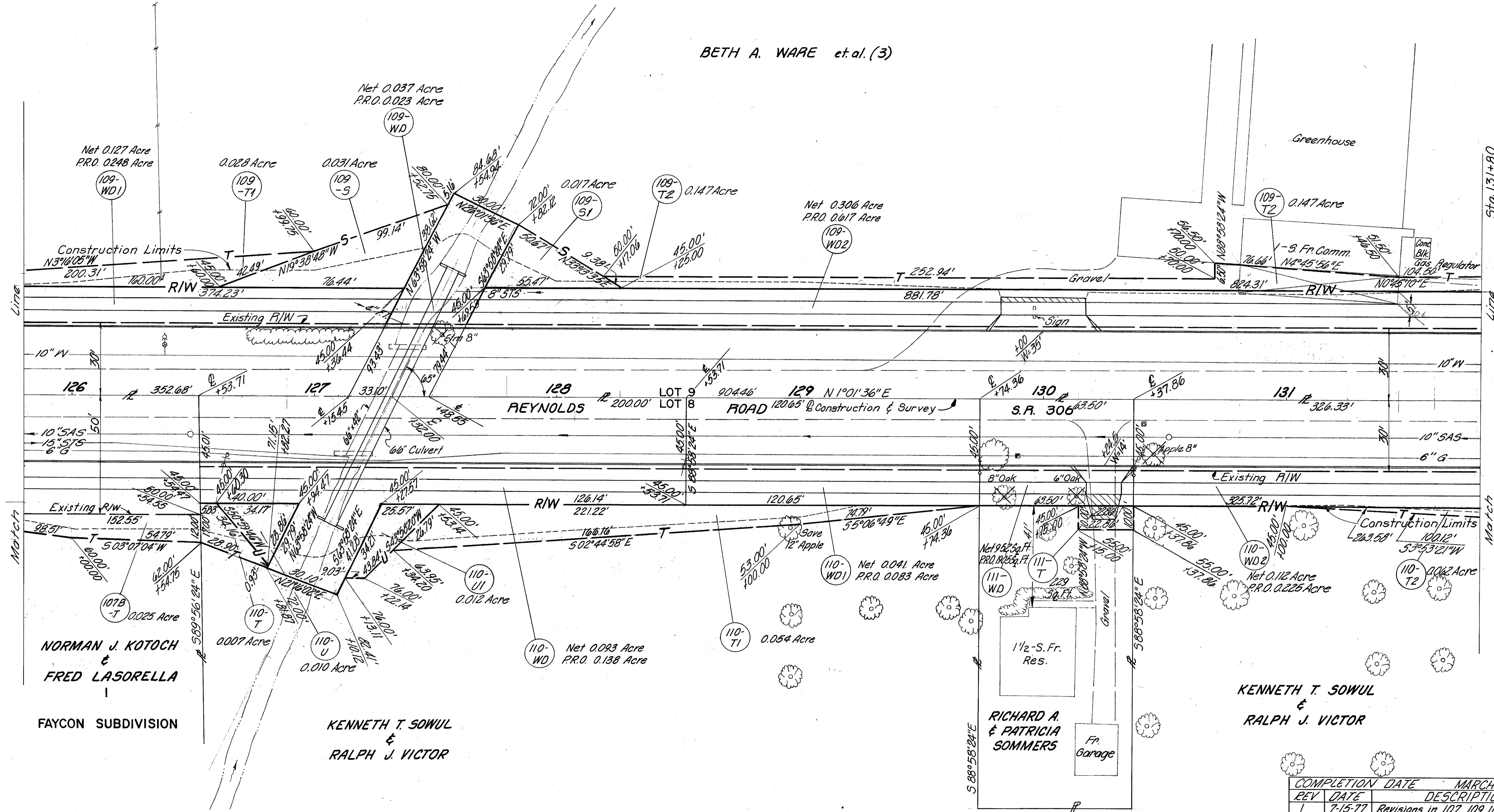


FED. RD. DIVISION	STATE	PROJECT
2	OHIO	

LAK-306-0.91

33
37

BETH A. WARE et al. (3)



Net 0.127 Acre
P.R.O. 0.248 Acre
(109-WD1)

0.028 Acre
(109-T1)

0.031 Acre
(109-S)

Net 0.037 Acre
P.R.O. 0.023 Acre
(109-WD)

0.017 Acre
(109-S1)

0.147 Acre
(109-T2)

Net 0.306 Acre
P.R.O. 0.617 Acre
(109-WD2)

0.147 Acre
(109-T2)

NORMAN J. KOTOCH
&
FRED LASORELLA

FAYCON SUBDIVISION

KENNETH T. SOWUL
&
RALPH J. VICTOR

Net 0.083 Acre
P.R.O. 0.138 Acre
(110-WD)

0.054 Acre
(110-T1)

Net 0.041 Acre
P.R.O. 0.083 Acre
(110-WD1)

1 1/2-S.Fr.
Res.

RICHARD A.
& PATRICIA
SOMMERS

KENNETH T. SOWUL
&
RALPH J. VICTOR

COMPLETION DATE	MARCH 22, 1974
REV DATE	DESCRIPTION
1	7-15-77 Revisions in 107, 109, 110 & 111 parcels

RIGHT OF WAY 125+80 TO 131+80