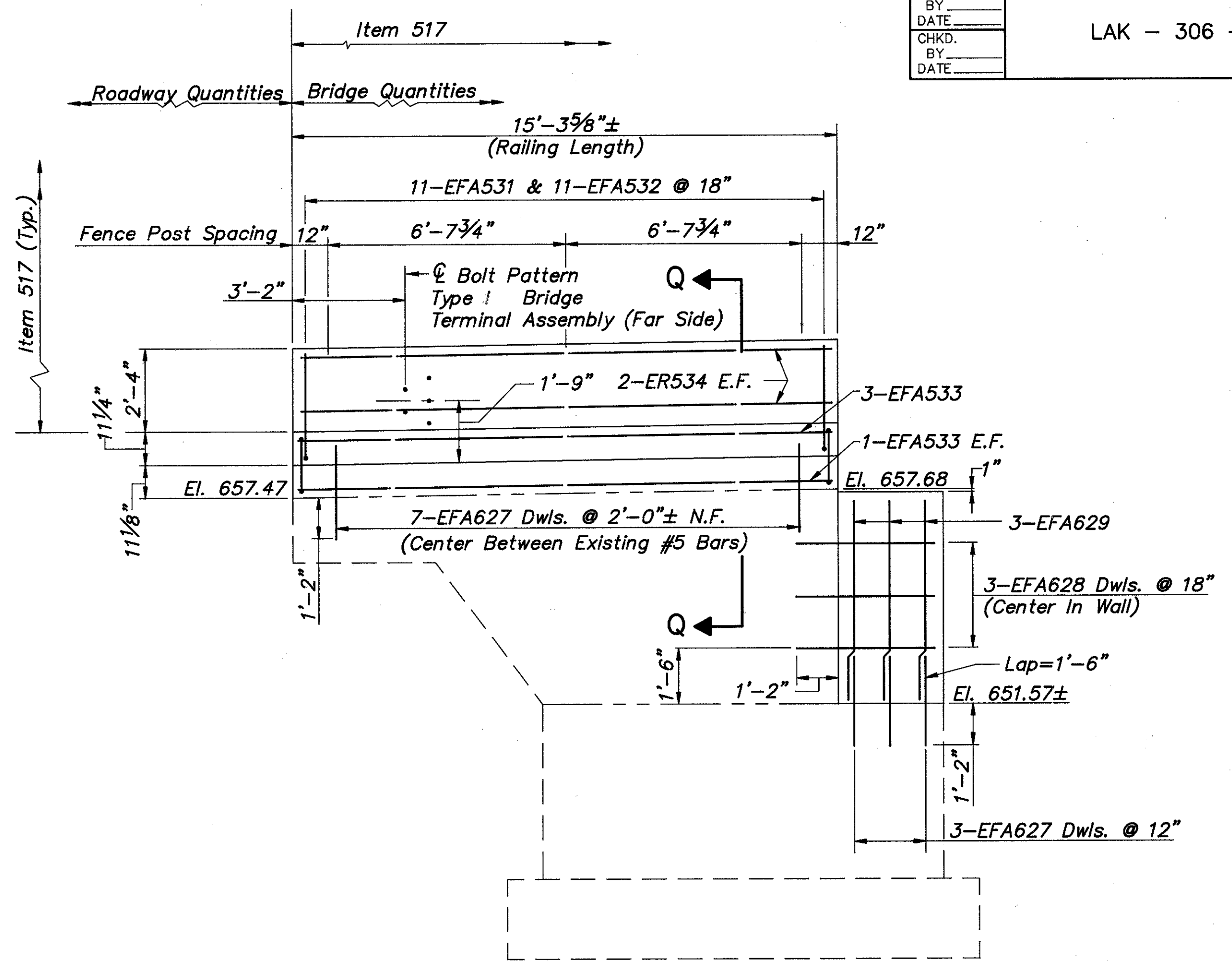
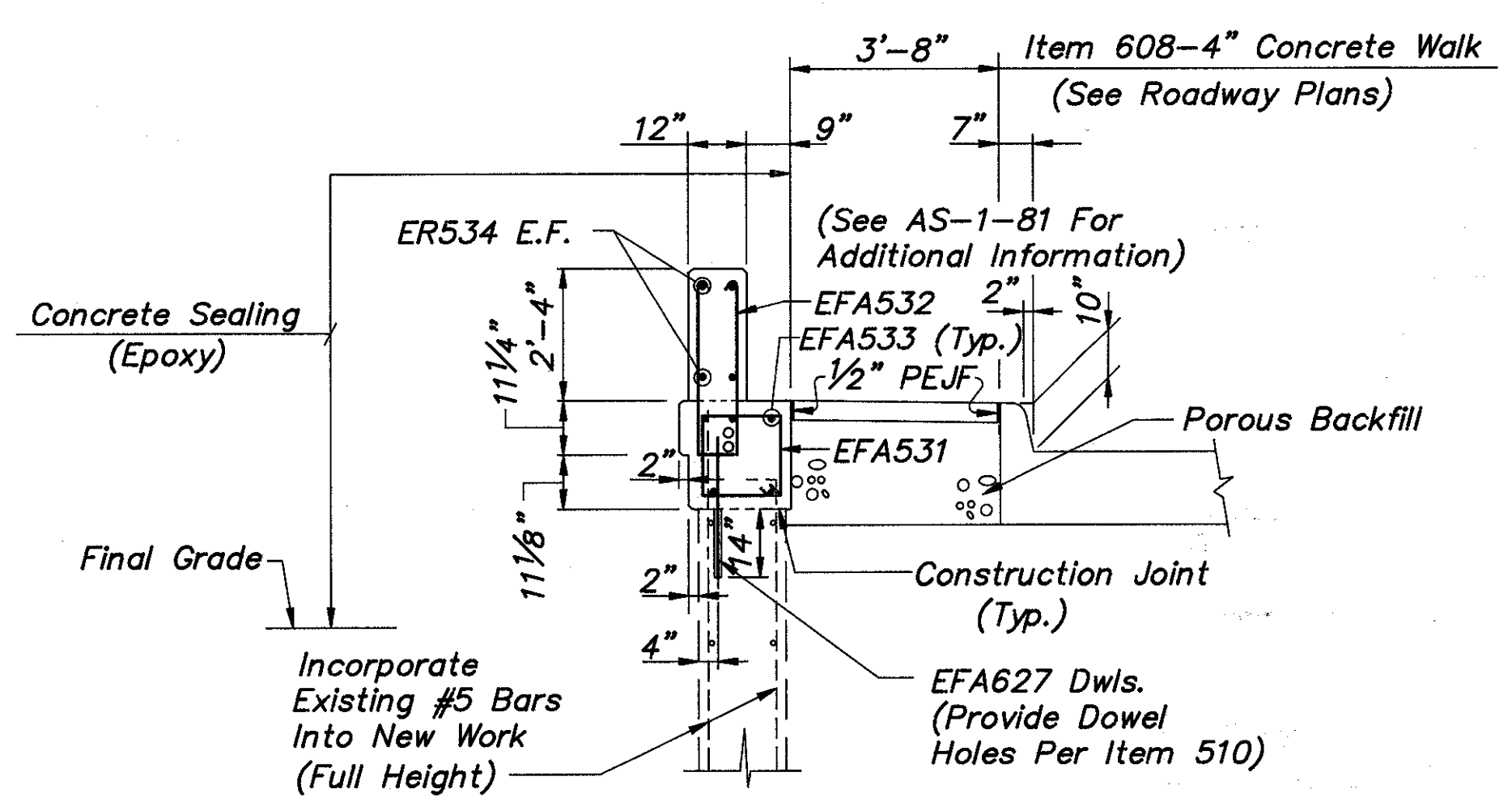


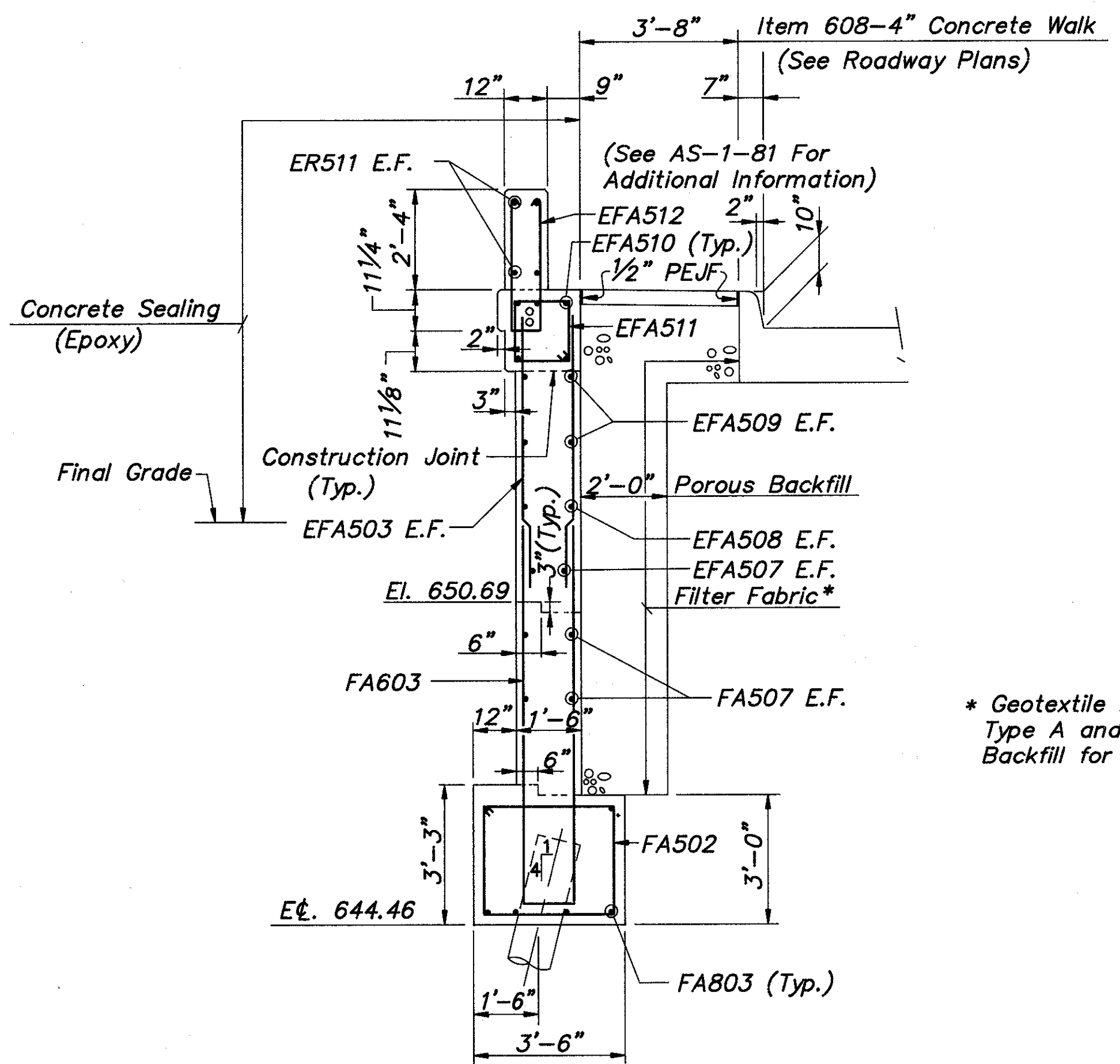
ELEVATION H-H
Proposed Wingwall
(Phase I)
(See Sheet 13/29)



ELEVATION G-G
Proposed Parapet On Wingwall
(Phase II)
(See Sheet 13/29)



SECTION Q-Q



SECTION K-K

- Notes:
- 1) For Fence Details, See Sheet 27/29
 - 2) For Type AT & AA Guardrail Terminal Connections, See Drawing GR-3.
 - 3) Required Bar Laps: As Noted
 - 4) Notation: N.F.-Near Face, E.F.-Each Face, Dwls.-Dowels, Typ.-Typical, Min.-Minimum
 - 5) For Abutment Plan, See Sheet 13/29

* Geotextile Fabric Shall Conform to 712.09, Type A and Shall be Included with Porous Backfill for Payment.

CT Consultants, Inc.
Engineers • Architects • Planners
Willoughby • Mentor • Columbus • North Canton • Youngstown

FORWARD ABUTMENT WINGWALL DETAILS
BRIDGE NO. LAK-306-0691
OVER STATE ROUTE 2
LAKE COUNTY

DESIGNED	DRAWN	TRACED	CHECKED	REVIEWED	DATE	REVISED
J.P.R.	M.T.W.	M.T.W.	J.E.A.	BJA	8/31/91	