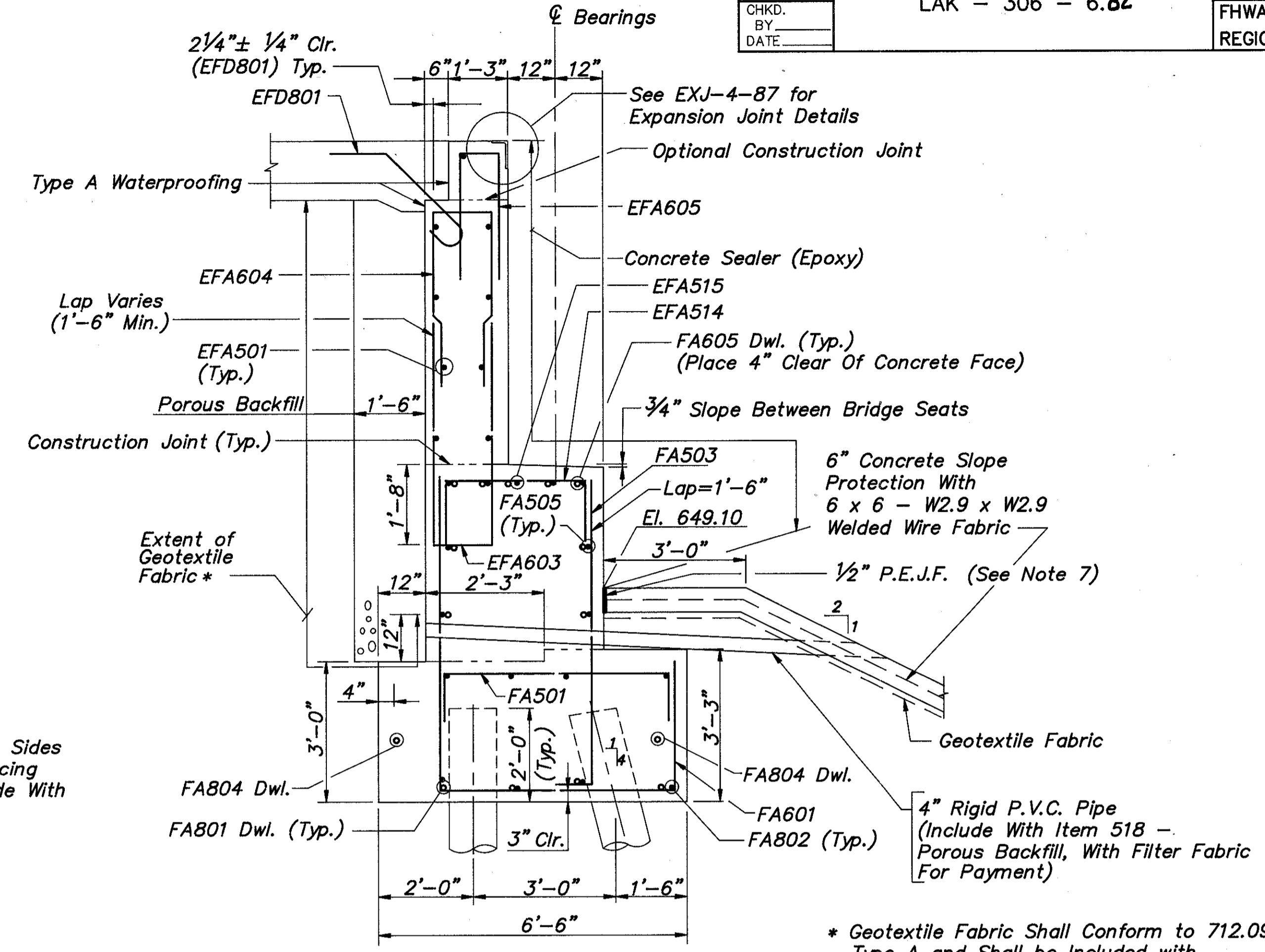


**FOOTING PLAN**

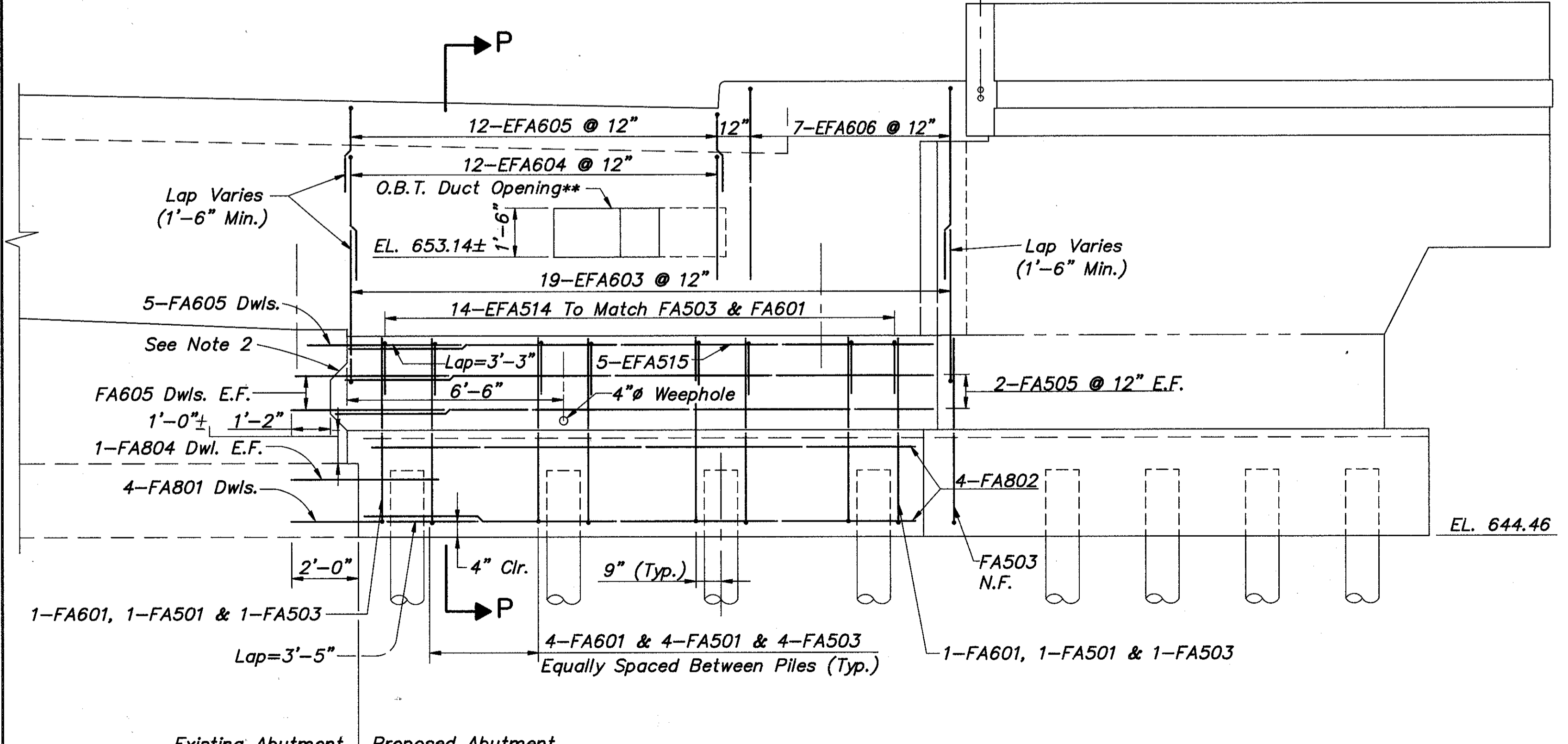
\*\* Place 1/2" P.E.J.F. On All Sides Of OBT Duct Prior To Placing Backwall Concrete. Include With Item 511 For Payment.

Openings Thru Joint Plates and Backwall Concrete for 2-2" Electrical Conduits. Provide Expansion Fittings at Abutments As Per Std. Dwg. HL-30.31 (Typical Both Sides)



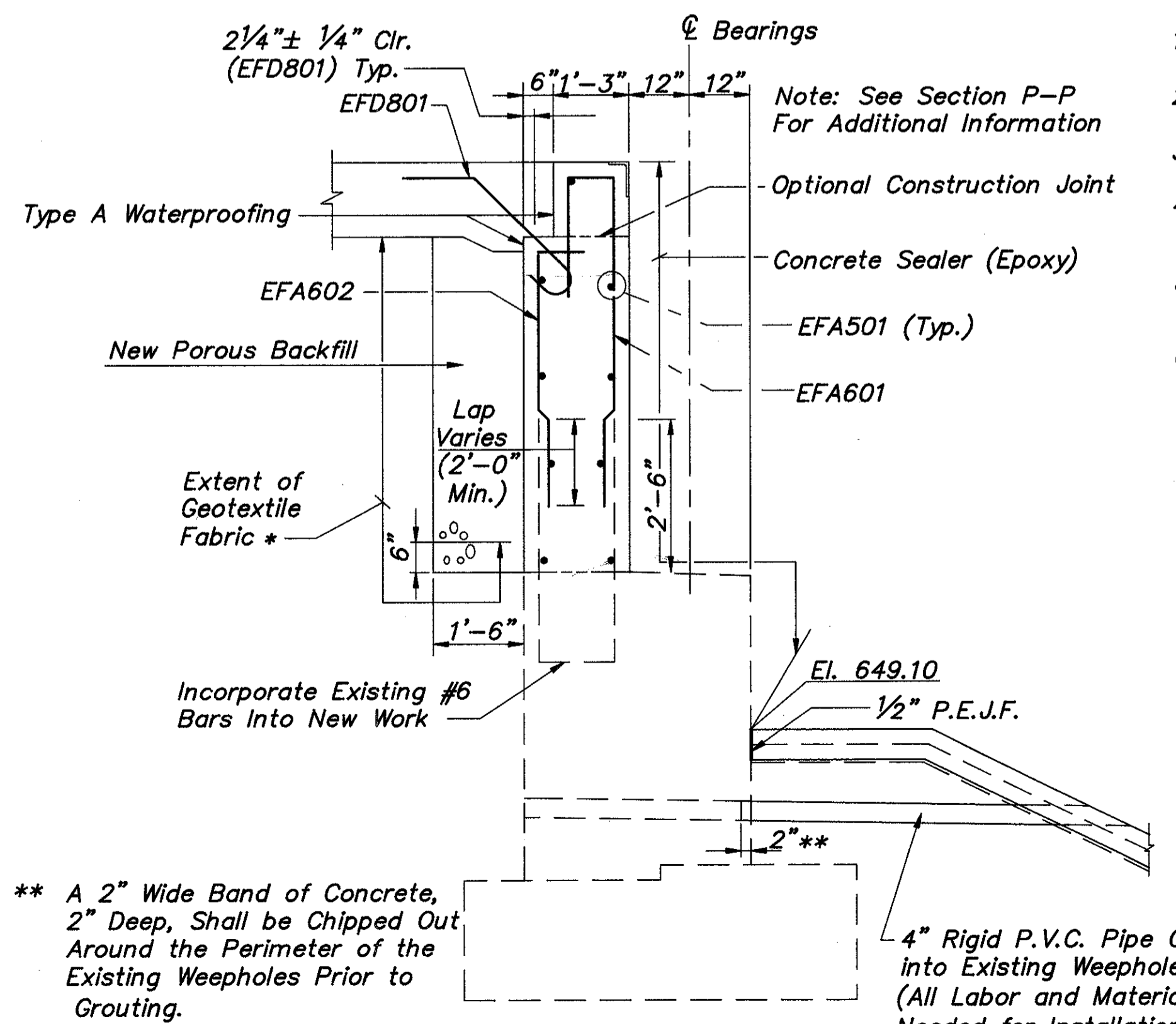
**SECTION P-P**

\* Geotextile Fabric Shall Conform to 712.09, Type A and Shall be Included with Porous Backfill for Payment.



**ELEVATION M-M**

(See Sheet 13/29)



**SECTION D-D**

\*\* A 2" Wide Band of Concrete, 2" Deep, Shall be Chipped Out Around the Perimeter of the Existing Weepholes Prior to Grouting.

- Notes:
- 1) For Location of Section D-D, See Sheet 13/29
  - 2) For Construction Joint Detail, See Sheet 11/29
  - 3) Required Bar Laps: As Noted
  - 4) Notation: T.-Top, B.-Bottom, E.F.-Each Face, Dws.-Dowels, Typ.-Typical, Min.-Minimum
  - 5) Cut or Move Reinforcing Steel in Backwall to Accommodate O.B.T. Duct Opening.
  - 6) See Sheet 13/29 for Plan Location of O.B.T. Duct Opening.
  - 7) The 1/2" PEJF Placed at the Abutment Face is Included with Item 601-Concrete Slope Protection, As Per Plan for Payment.
  - 8) Item 518-Porous Backfill, With Filter Fabric  
 Porous Backfill Shall Extend up to the Plane of the Subgrade, to 1 Foot Below the Embankment Surface, and Laterally to the Ends of the Wingwalls.

**CT Consultants, Inc.**  
 Engineers • Architects • Planners  
 Willoughby • Mentor • Columbus • North Canton • Youngstown 14/29

**FORWARD ABUTMENT DETAILS**  
 BRIDGE NO. LAK-306-0691  
 OVER STATE ROUTE 2  
 LAKE COUNTY

DESIGNED	DRAWN	TRACED	CHECKED	REVIEWED	DATE	REVISED
J.P.R.	M.T.W.	M.T.W.	J.E.A.	BJA	8/31/90	