

# REYNOLDS ROAD & NORTH RAMPS SIGNAL SUPPORT DETAILS

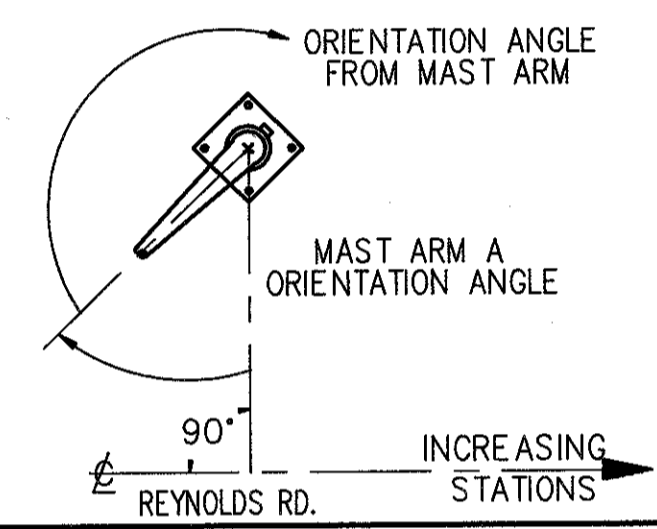
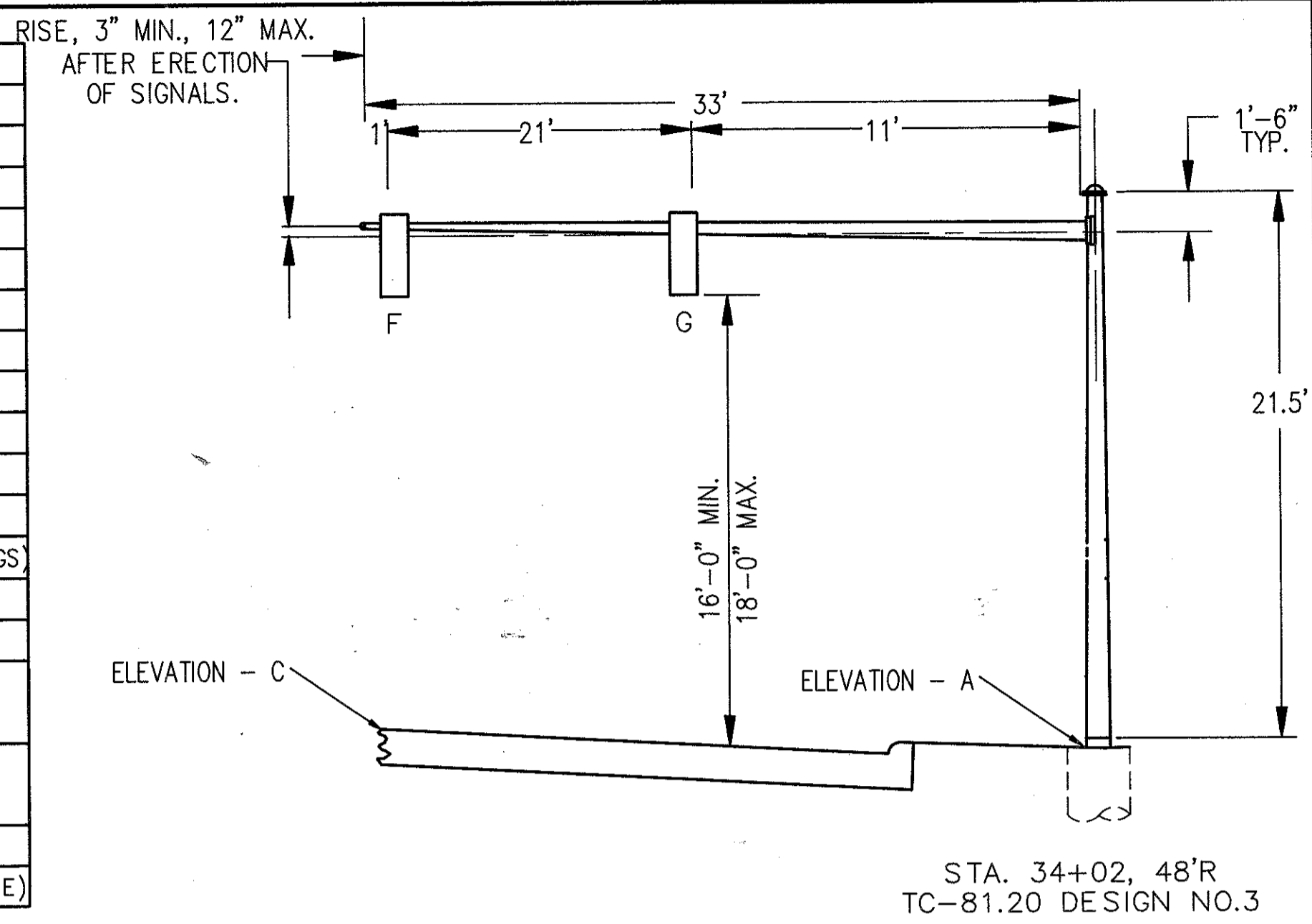
CALC. BY R.L.J.  
DATE 3/81  
CHKD. BY M.P.C.  
DATE 3/81

LAK - 306 - 6.82

OHIO  
FHWA REGION 5

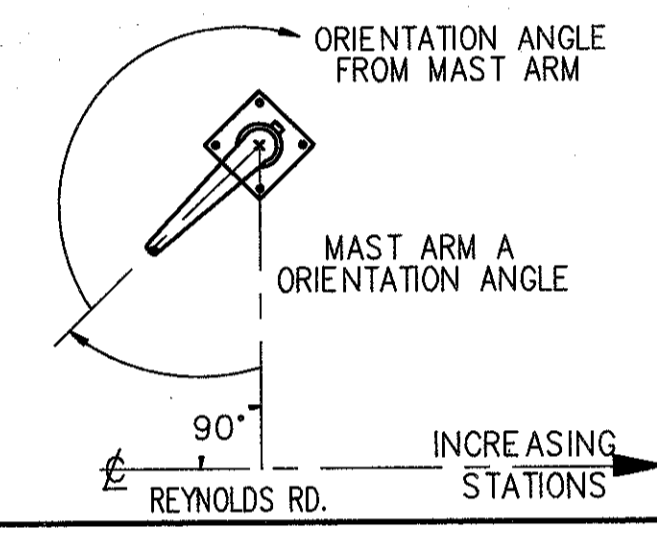
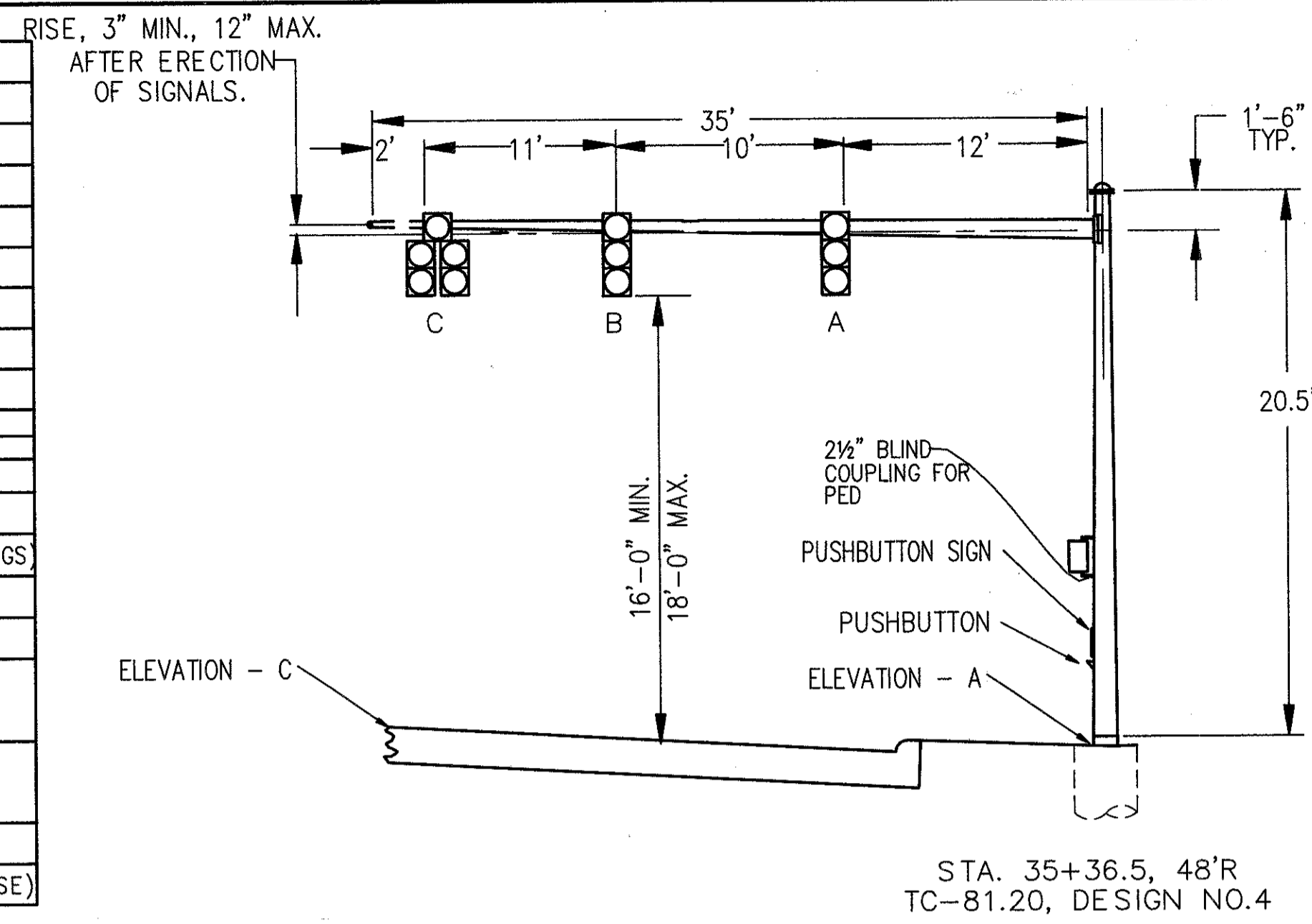
55  
92

1	POLE No.
3	DESIGN No.
21.5'	POLE HT.
34+02	STATION
48'R	OFFSET
33'	L (FT)
11'	L1 (FT)
21'	L2 (FT)
652.92	ELEVATION - A
652.94	ELEVATION - C
ORIENTATION ANGLES	
270°	MAST ARM A ORIENTATION ANGLE (DEGS)
-	MAST ARM B
-	CABLE ENTRANCE (12" FROM TOP)
PEDESTRIAN SIGNAL	
(2 1/2" BLIND COUPLING, 8' FROM BOTTOM OF POLE)	
	PEDESTRIAN PUSHBUTTON
3'-6"	FROM BOTTOM OF POLE
270°	HANDHOLE
-	2" CAPPED CONDUIT ELL (FUTURE USE)



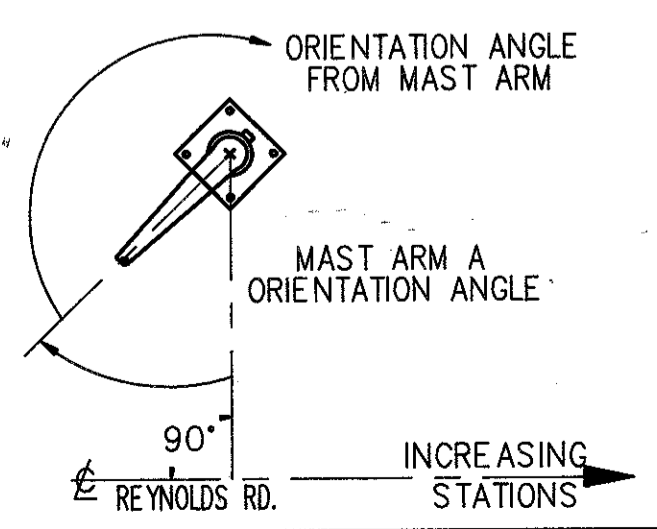
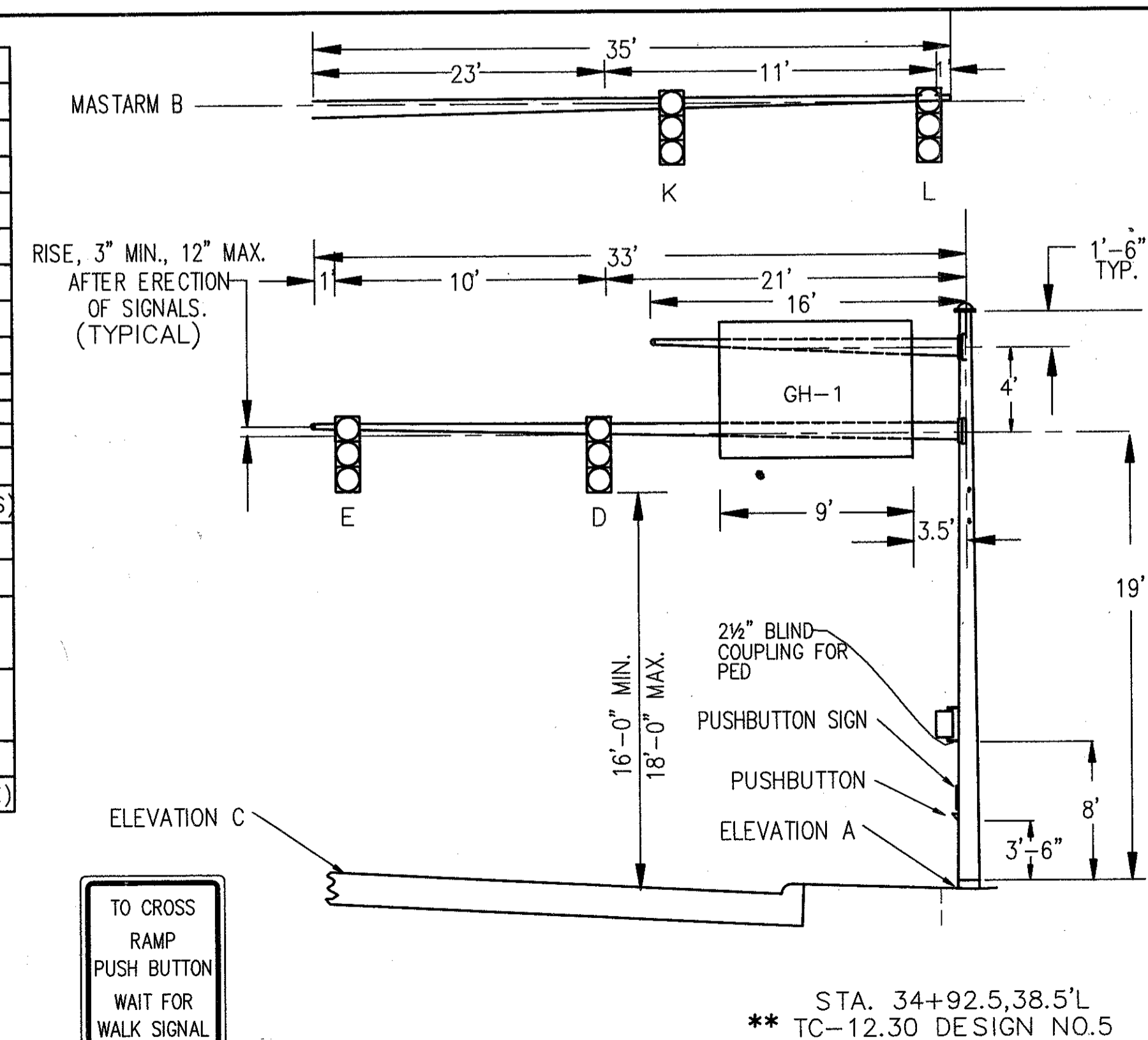
P1 SIGNAL SUPPORT DETAIL

2	POLE No.
4	DESIGN No.
20.5'	POLE HT.
35+36.5	STATION
48'R	OFFSET
35'	L (FT)
12'	L1 (FT)
10'	L2 (FT)
11'	L3 (FT)
647.68	ELEVATION - A
651.06	ELEVATION - C
ORIENTATION ANGLES	
0°	MAST ARM A ORIENTATION ANGLE (DEGS)
-	MAST ARM B
-	CABLE ENTRANCE (12" FROM TOP)
PEDESTRIAN SIGNAL	
270°	(2 1/2" BLIND COUPLING, 8' FROM BOTTOM OF POLE)
0°	W PEDESTRIAN PUSHBUTTON
270°	X 3'-6" FROM BOTTOM OF POLE
270°	HANDHOLE
-	2" CAPPED CONDUIT ELL (FUTURE USE)



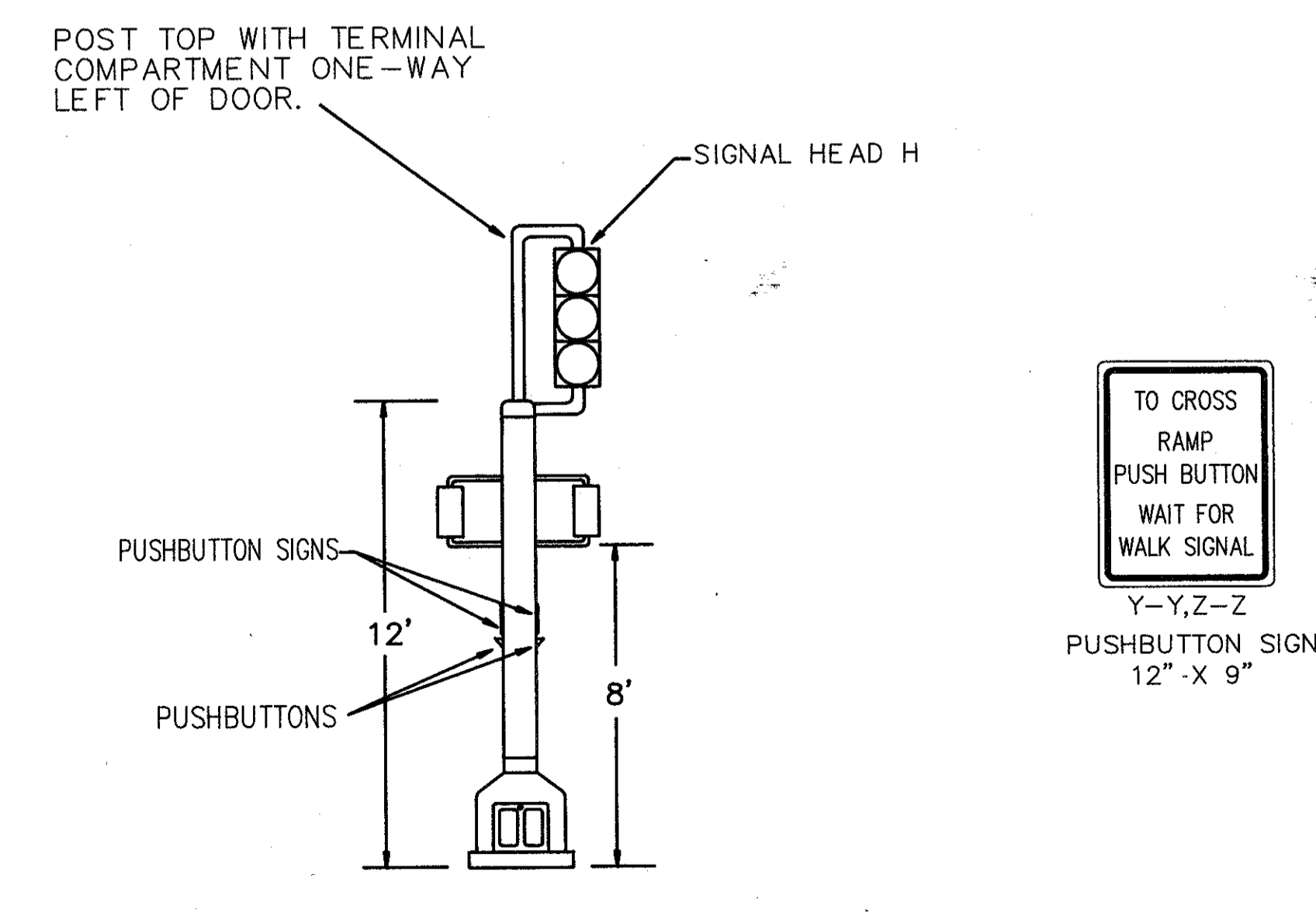
P2 SIGNAL SUPPORT DETAIL

3	POLE No.
5	DESIGN No.
24.5'	POLE HT.
34+92.5	STATION
38.5'L	OFFSET
33'	L (FT)
21'	L1 (FT)
10'	L2 (FT)
16'	L (FT)
649.80	ELEVATION - A
649.45	ELEVATION - C
ORIENTATION ANGLES	
0°	MAST ARM A ORIENTATION ANGLE (DEGS)
270°	MAST ARM B
0°	MAST ARM C
PEDESTRIAN SIGNAL	
(2 1/2" BLIND COUPLING, 8' FROM BOTTOM OF POLE)	
0°	Y PEDESTRIAN PUSHBUTTON
3'-6"	FROM BOTTOM OF POLE
180°	HANDHOLE
-	2" CAPPED CONDUIT ELL (FUTURE USE)



P3 SIGNAL SUPPORT DETAIL  
\*\* DUAL MAST ARM SUPPORT

NOTE: PEDESTRIAN PEDESTALS SHALL BE EQUIPPED WITH THE APPROPRIATE PUSHBUTTON SIGN LEGEND.



P6: PEDESTAL, 12', WITH TRANSFORMER BASE