

CURVE DATA
 R = 20.00'
 Δ = 121°19'20"
 A = 42.35'
 T = 35.58'
 C = 34.87'

(A)

CURVE DATA
 R = 5.00'
 Δ = 124°22'07"
 A = 10.85'
 T = 9.48'
 C = 8.84'

(B)

CURVE DATA
 R = 57.00'
 Δ = 65°41'27"
 A = 65.35'
 T = 36.80'
 C = 61.83'

(C)

CURVE DATA
 R = 50.00'
 Δ = 58°40'40"
 A = 51.21'
 T = 28.10'
 C = 49.00'

(D)

(E)

CURVE DATA
 R = 40.00'
 Δ = 121°19'20"
 A = 84.70'
 T = 71.17'
 C = 69.74'

(E)

CURVE DATA
 R = 5.00'
 Δ = 125°00'49"
 A = 10.91'
 T = 9.61'
 C = 8.87'

(F)

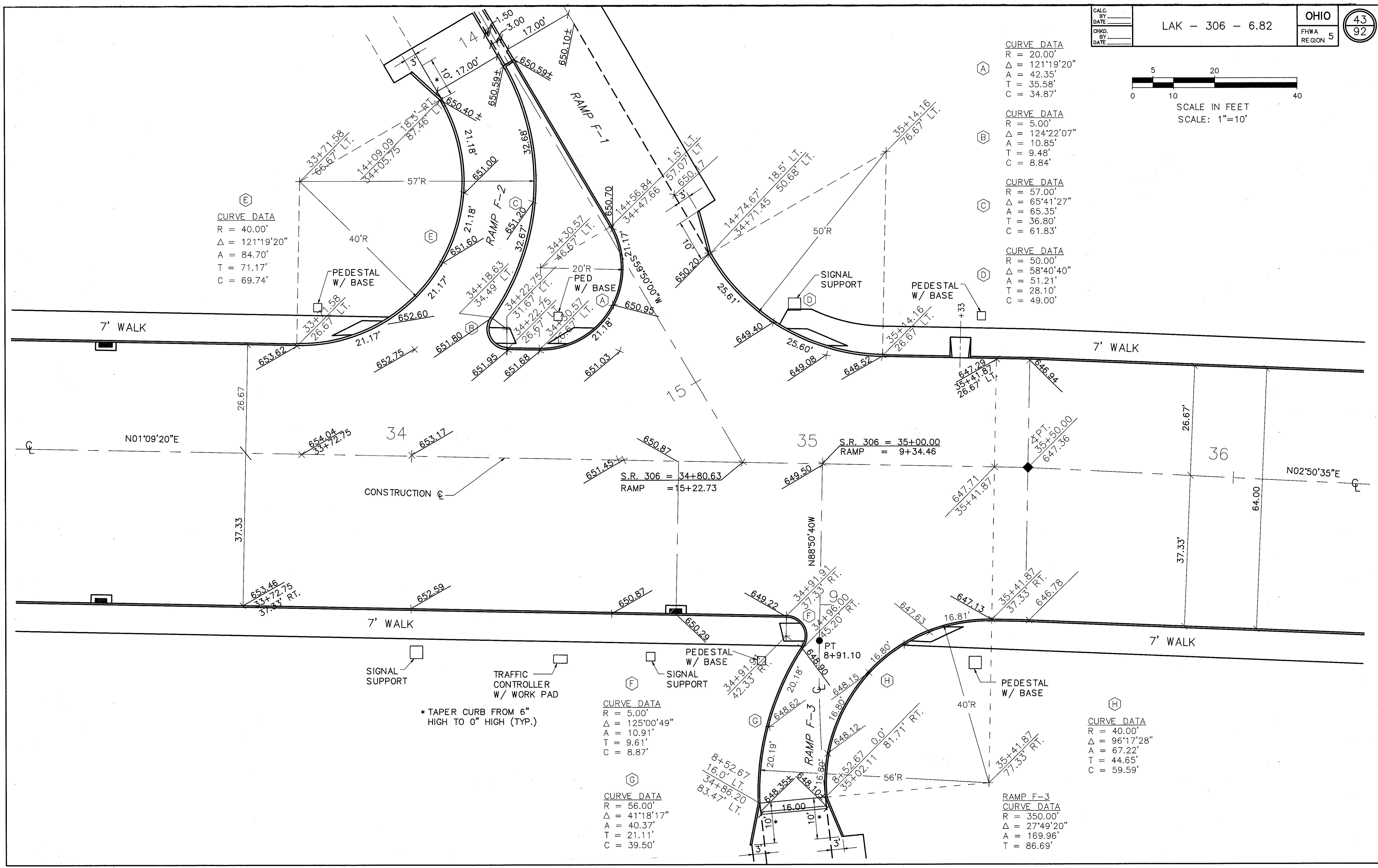
CURVE DATA
 R = 56.00'
 Δ = 41°18'17"
 A = 40.37'
 T = 21.11'
 C = 39.50'

(G)

CURVE DATA
 R = 40.00'
 Δ = 96°17'28"
 A = 67.22'
 T = 44.65'
 C = 59.59'

(H)

RAMP F-3 CURVE DATA
 R = 350.00'
 Δ = 27°49'20"
 A = 169.96'
 T = 86.69'



INTERSECTION DETAILS STA. 33+72.75 TO STA. 35+41.87

LAK-306-6.82