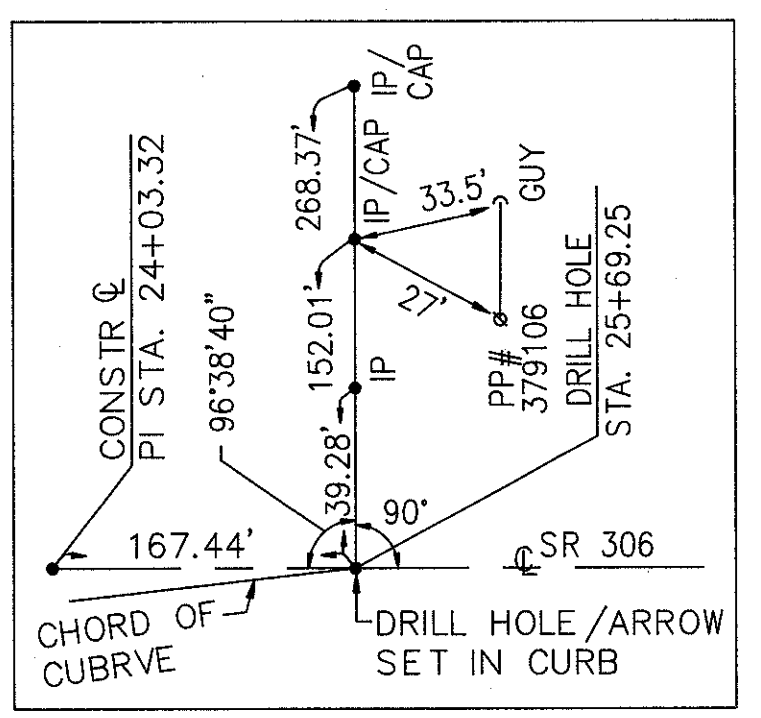
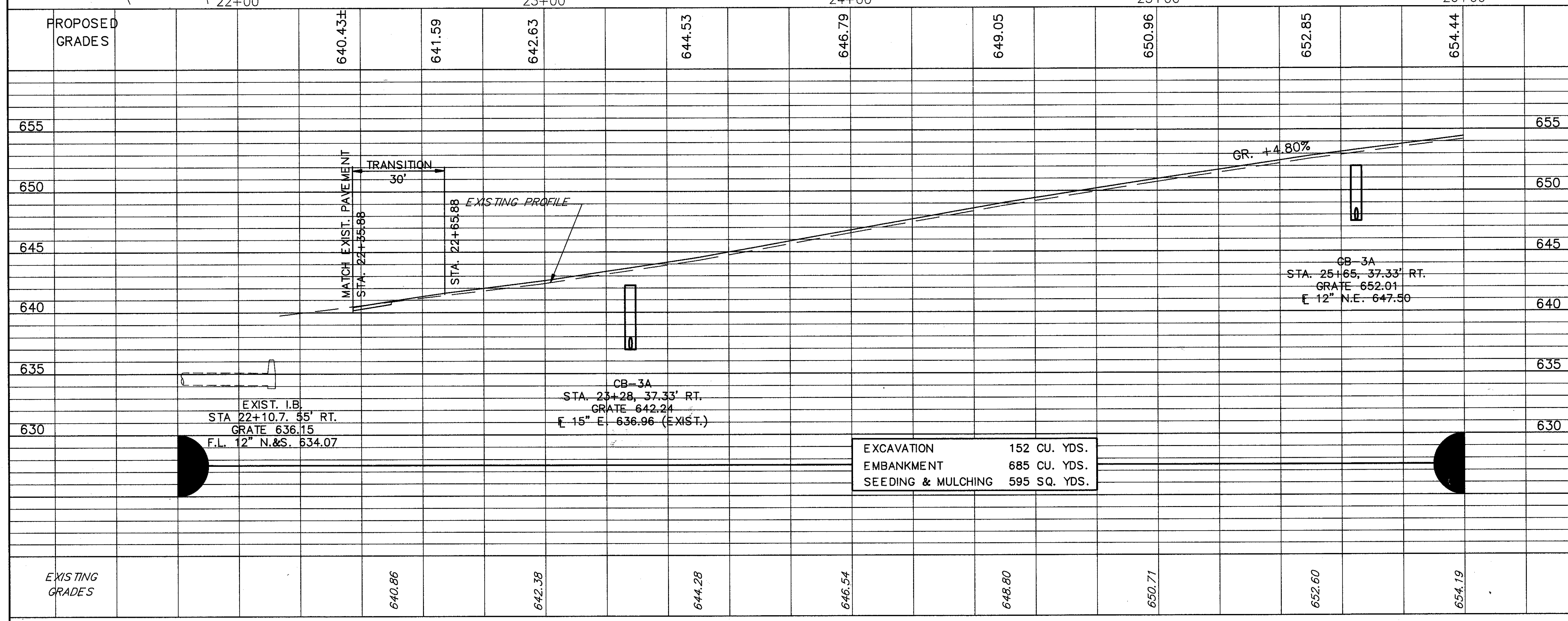


CONSTR. & CURVE DATA
STA. 22+35.88 TO STA. 25+69.25
P.I. STA. 24+03.32
R = 1437.33'
D_c = 3' 59" 11"
Δ = 13'17"21"
A = 333.37'
T = 167.44'
C = 332.63'



FOR TYPICAL SECTIONS SEE SHEETS . . . 3 & 4
FOR CROSS SECTIONS SEE SHEETS . . . 30 THRU 32
FOR INTERSECTION DETAIL SEE SHEET . . . 42
FOR PAVEMENT REMOVAL SEE SHEET . . . 40
FOR STORM SEWER DETAILS SEE SHEET . . . 38
FOR TOWER LIGHT MAINTENANCE PLATFORM DETAILS SEE SHEET . . . 47
FOR TRAFFIC ISLAND DETAIL SEE SHEET . . . 41
FOR STORM SEWER PROFILES SEE SHEET . . . 38
FOR LIGHTING SEE SHEET . . . 45

| REF. | LOCATIONS | QU. | YD. | LF | EA | EA | EA | EA | EA | S.Y. |
|--------|--|-----|-----|----|-----|----|----|-----|----|------|
| R-1 | STA. 22+33, 46'RT TO STA. 24+15, 46'RT | 150 | 1 | | | | | | | |
| R-2 | STA. 22+33, 46'RT TO STA. 24+15, 46'RT | | | | | | | 150 | 1 | |
| R-3 | STA. 22+35.88, CENTERLINE | | | | | | | | | 1 |
| R-4 | STA. 22+33, 41'LT TO STA. 23+08, 36'LT | 75 | | | | | | | | |
| R-5 | STA. 22+33, 41'LT TO STA. 23+08, 36'LT | | | | | | | 75 | | |
| R-6 | STA. 25+16, 81'RT TO STA. 26+00, 38'RT | 107 | | | | | | | | |
| R-7 | STA. 25+20, 79'RT TO STA. 26+00, 46'RT | | | | | | | | | 100 |
| R-8 | STA. 24+30.84, CENTERLINE | | | | | | | | | 1 |
| R-9 | STA. 23+76.76, CENTERLINE | | | | | | | | | 1 |
| R-10 | STA. 23+95, 47'LT TO STA. 26+00, 37'LT | 221 | 1 | | | | | | | |
| R-11 | STA. 23+95, 47'LT TO STA. 26+00, 36'LT | | | | | | | | | 217 |
| R-12 | STA. 25+69.25, CENTERLINE | | | | | | | | | 1 |
| R-13 | STA. 22+35.88 TO STA. 22+48.38 | | | | | | | | | 88.9 |
| TOTALS | | 553 | 2 | 4 | 542 | 2 | | | | 88.9 |



| | |
|--------------------|--------------|
| EXCAVATION | 152 CU. YDS. |
| EMBANKMENT | 685 CU. YDS. |
| SEEDING & MULCHING | 595 SQ. YDS. |

| ROADWAY* | | CONC. | MASONRY | 12" CONDUIT, TYPE C | 15" CONDUIT, TYPE C | ROCK CHANNEL PROTECTION, TYPE C | ANCHOR ASSEMBLY REBUILD, TYPE A | PAVEMENT PLANING, BITUMINOUS |
|----------|--|-------|---------|---------------------|---------------------|---------------------------------|---------------------------------|------------------------------|
| REF. | LOCATIONS | QU. | YD. | LF | EA | EA | EA | EA |
| D-1 | STA. 23+28, 46.4'RT TO STA. 23+28, 62.4'RT | .27 | | | | | | |
| D-2 | STA. 25+65, 37'RT TO STA. 25+90, 77.5'RT | .21 | 47 | | | | | |
| D-3 | STA. 23+28 | | | | | | | |
| D-4 | STA. 24+78 | | | | | | | |
| D-5 | STA. 23+28, 37.33' RT. | | | | | | | |
| TOTALS | | .48 | 47 | 2 | 2 | 16 | | 0.9 |

| DRAINAGE* | | CONC. | MASONRY | 12" CONDUIT, TYPE C | 15" CONDUIT, TYPE C | ROCK CHANNEL PROTECTION, TYPE C | ANCHOR ASSEMBLY REBUILD, TYPE A | PAVEMENT PLANING, BITUMINOUS |
|-----------|--|-------|---------|---------------------|---------------------|---------------------------------|---------------------------------|------------------------------|
| REF. | LOCATIONS | QU. | YD. | LF | EA | EA | EA | EA |
| D-1 | STA. 23+28, 46.4'RT TO STA. 23+28, 62.4'RT | .27 | | | | | | |
| D-2 | STA. 25+65, 37'RT TO STA. 25+90, 77.5'RT | .21 | 47 | | | | | |
| D-3 | STA. 23+28 | | | | | | | |
| D-4 | STA. 24+78 | | | | | | | |
| D-5 | STA. 23+28, 37.33' RT. | | | | | | | |
| TOTALS | | .48 | 47 | 2 | 2 | 16 | | 0.9 |

* QUANTITIES CARRIED TO SUB-SUMMARIES ON SHEET 20.