

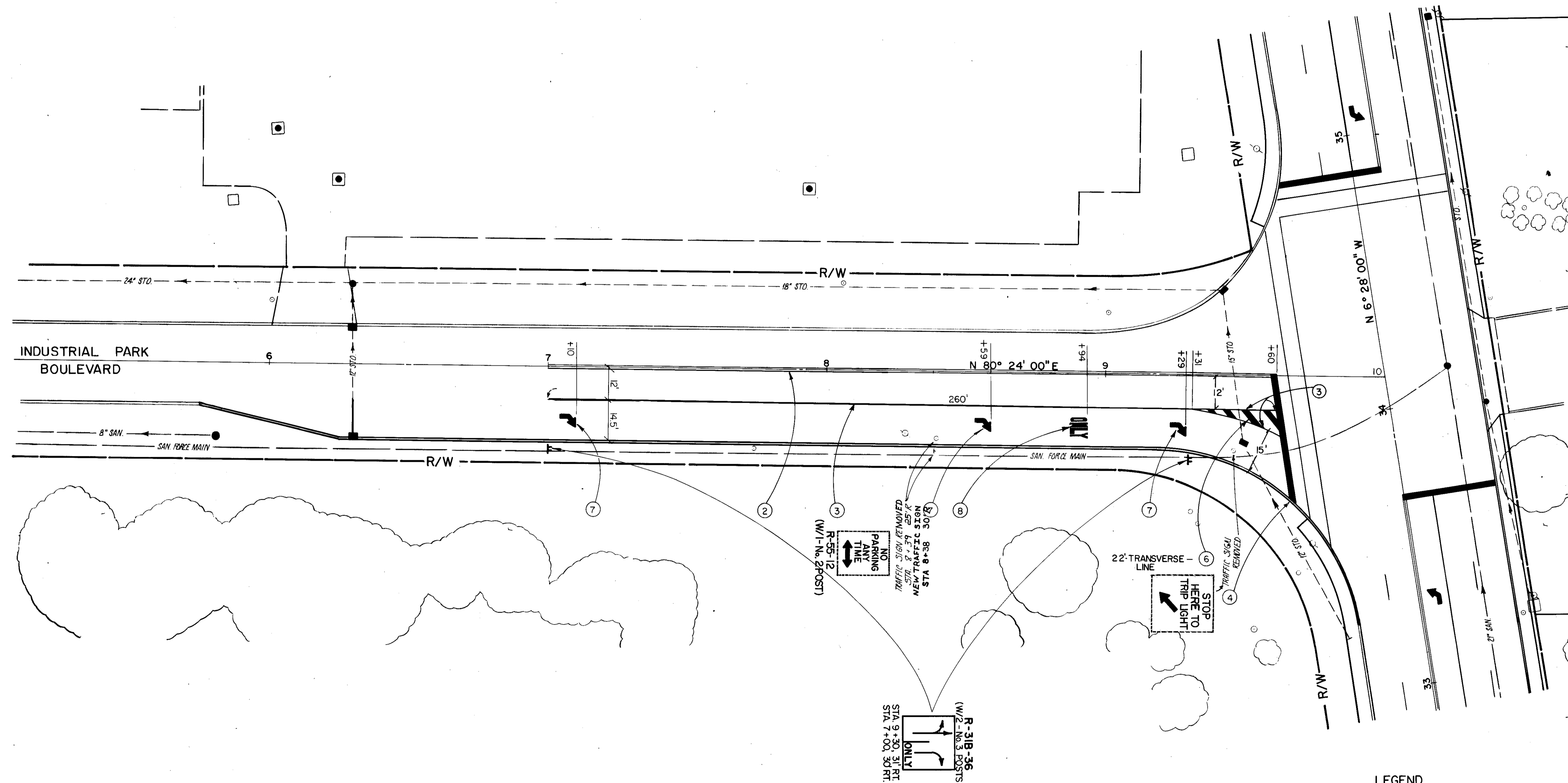
CALC. BY: _____
 DATE: _____
 CHKD. BY: _____
 DATE: _____

LAKE COUNTY
 LAK-306-6.50

OHIO
 FHWA
 REGION

32
 38

NOTE: ALL PAVEMENT MARKINGS FOR INDUSTRIAL PARK BLVD., WITH THE EXCEPTION OF THE STOP LINES, SHALL BE PAID FOR 100% BY THE CITY OF MENTOR.



- LEGEND**
- ① LANE LINES
 - ② CENTER LINES
 - ③ CHANNELIZING LINES
 - ④ STOP LINES
 - ⑤ CROSSWALK LINES
 - ⑥ TRANSVERSE LINES (24" WHITE)
 - ⑦ LANE ARROWS
 - ⑧ WORD ON PAVEMENT, 72"

FOR SIGNALIZATION PLAN SEE SHEET NO. 34
 FOR SIGNING SUB SUMMARY SEE SHEET NO. 27A
 FOR PAVEMENT MARKING SUB SUMMARY SEE SHEET NO. 27B