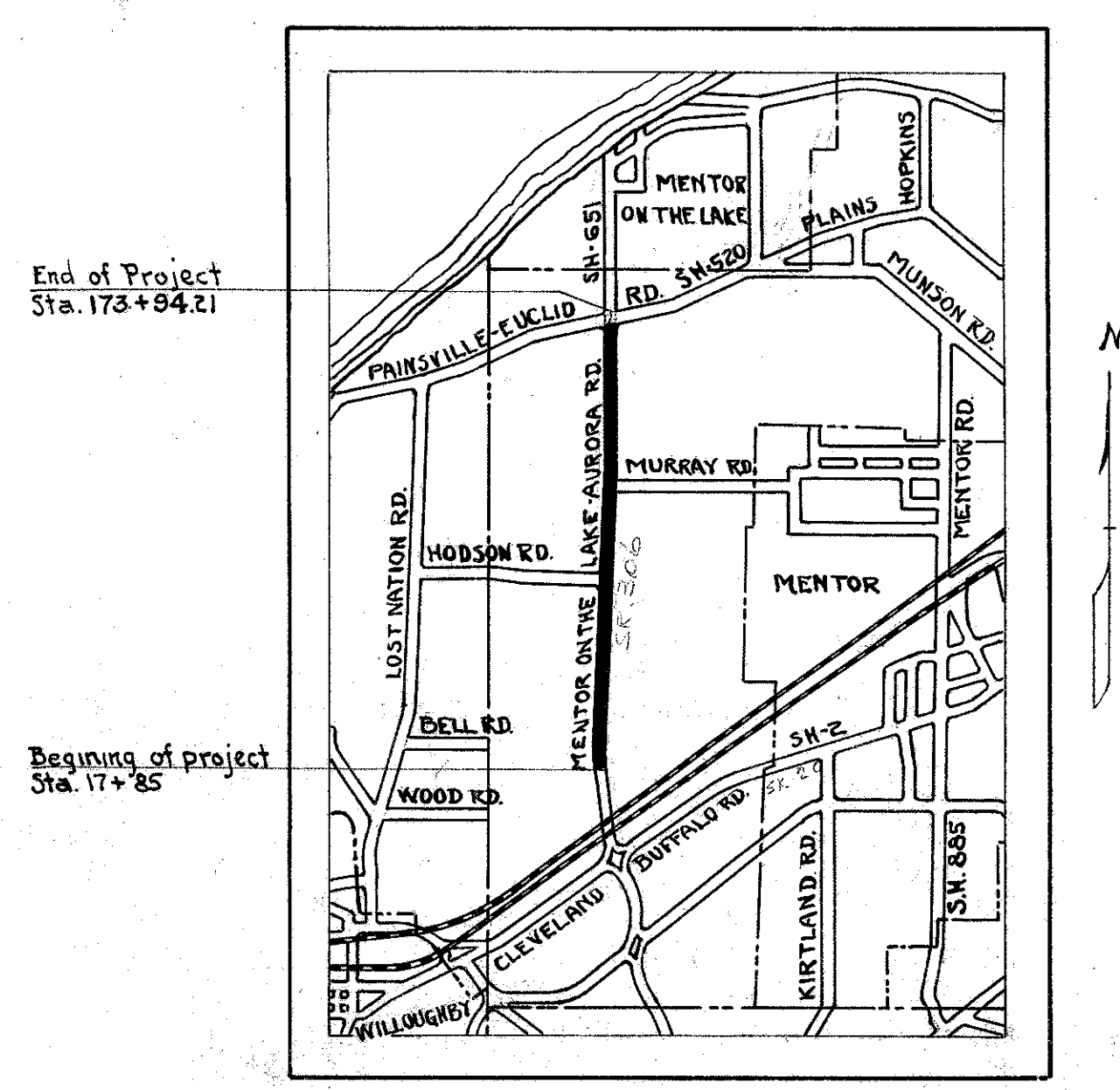


8-11

STATE OF OHIO
 DEPARTMENT OF HIGHWAYS
 WPA STATE HIGHWAY PROJECTS
 STATE WIDE OFFICIAL PROJECT O.P. 665-42-1-119
 LAKE COUNTY
 S.H. 651 SEC.A ROUTE 306
 NET LENGTH OF PROJECT 2.96 MI.

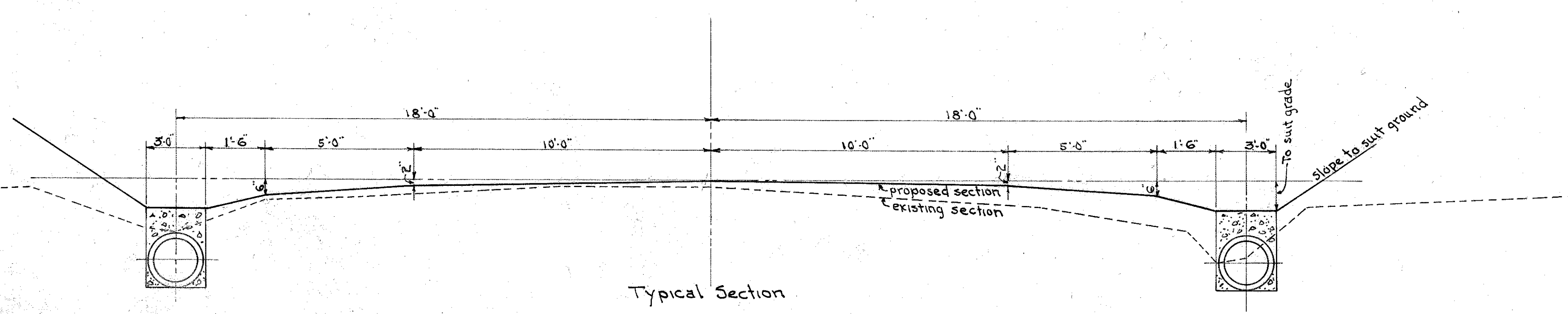
LAK 306
 6.48-9.44



SUMMARY OF QUANTITIES		
QUANTITY	UNIT	MATERIAL
2,800	Cu. Yds.	Excavation (Ditch)
9,200	Cu. Yds.	(Trench)
5,500	Cu. Yds.	Road Surfacing Material Type T-32
60		Trees removed
3,200	Ton	Slag for sewer
500	Ton	Slag for driveways
6,630	Lin. Ft.	12" Pipe I-3
3,856	Lin. Ft.	15" Pipe I-3
3,848	Lin. Ft.	18" Pipe I-3
6,640	Lin. Ft.	21" Pipe I-3
5,280	Lin. Ft.	24" Pipe I-3
270	Lin. Ft.	12" Pipe I-1
140	Lin. Ft.	15" Pipe I-1
120	Lin. Ft.	18" Pipe I-1
340	Lin. Ft.	21" Pipe I-1
510	Lin. Ft.	24" Pipe I-1
33		Modified 1-3 CB
43		Modified 1-2 CB.
		= 75 Cu Yds Concrete (Class C) - 1500# Steel & 76 Grating Castings
100	Cu. Yds.	Excavation for culverts (3)
50.33	Lin. Ft.	10 Span. 7 Gauge Multi Plate Arch Culvert
50.33	Lin. Ft.	12 - 7 - - - - -
50.33	Lin. Ft.	84 Dia. 8 Gauge Paved Invert Corrugate Pipe Culvert
1020	Cu. Ft.	Stone Masonry for Culverts
		= 300 Cu. ft. New Stone - 16 Bbls. Cement & 4 Ton Sand.
68	Cu. Yds.	Concrete (Class E) for Culverts
52,230	Sq. Yds.	Rake, Fertilize, Seed & Mulch
		Lumber, Misc. hardware etc.

The right of way necessary for this improvement will be provided by the State of Ohio. Traffic shall be maintained at all times. All workmanship and material shall be in accordance with 1939 State of Ohio Standard Specifications. Strike off templet shall be built as directed by Engineer.

I hereby approve these plans and declare that provision for maintenance and safety of traffic will be made as herein described:



Install roadside drainage system and culverts as indicated on plans. Road to be surfaced with T-32 type pavement

Approved Frank Williams, P.E. 862
 Date 3-7-40 Resident Division Deputy Director

Approved _____
 Date _____ Chief Engineer, Bureau of Maintenance

Approved _____
 Date _____ First Asst. Director - Chief Engineer

Approved _____
 Date _____ Director of Highways

000064