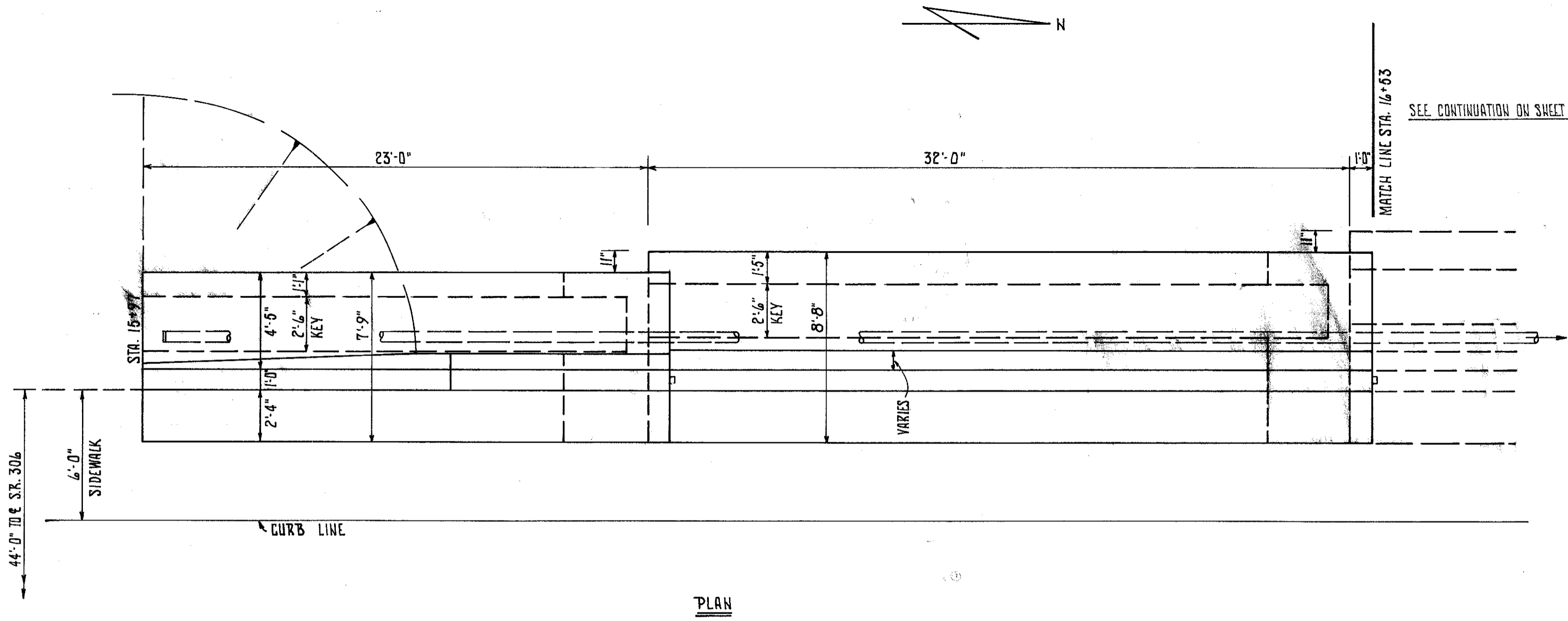


MICROFILMED  
APR 24 1984

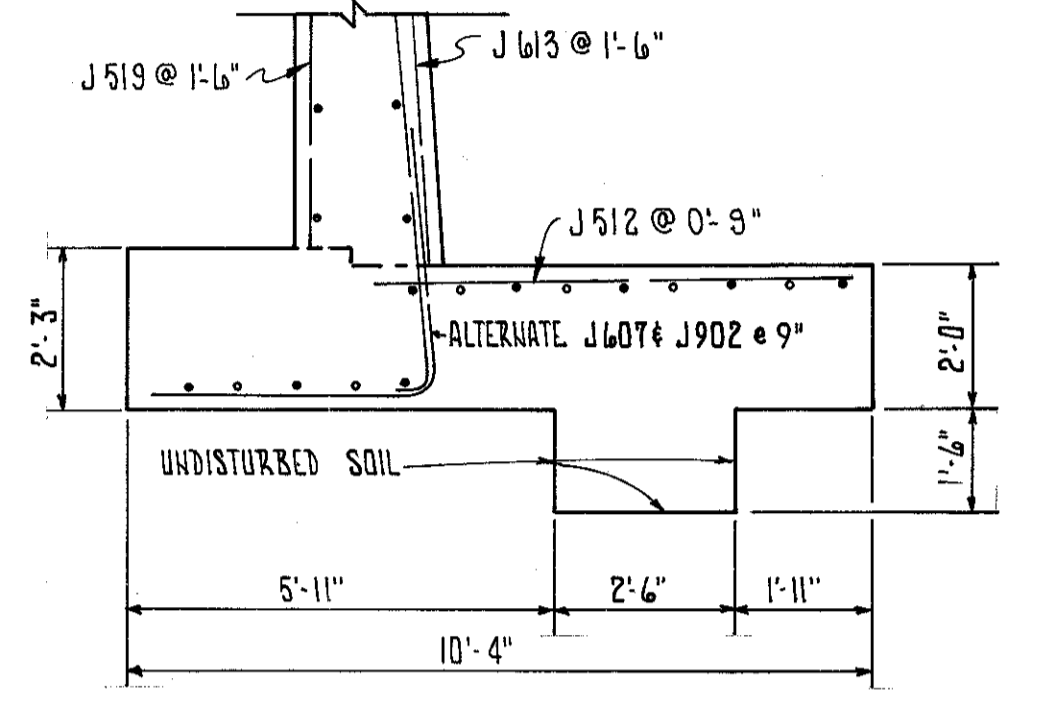
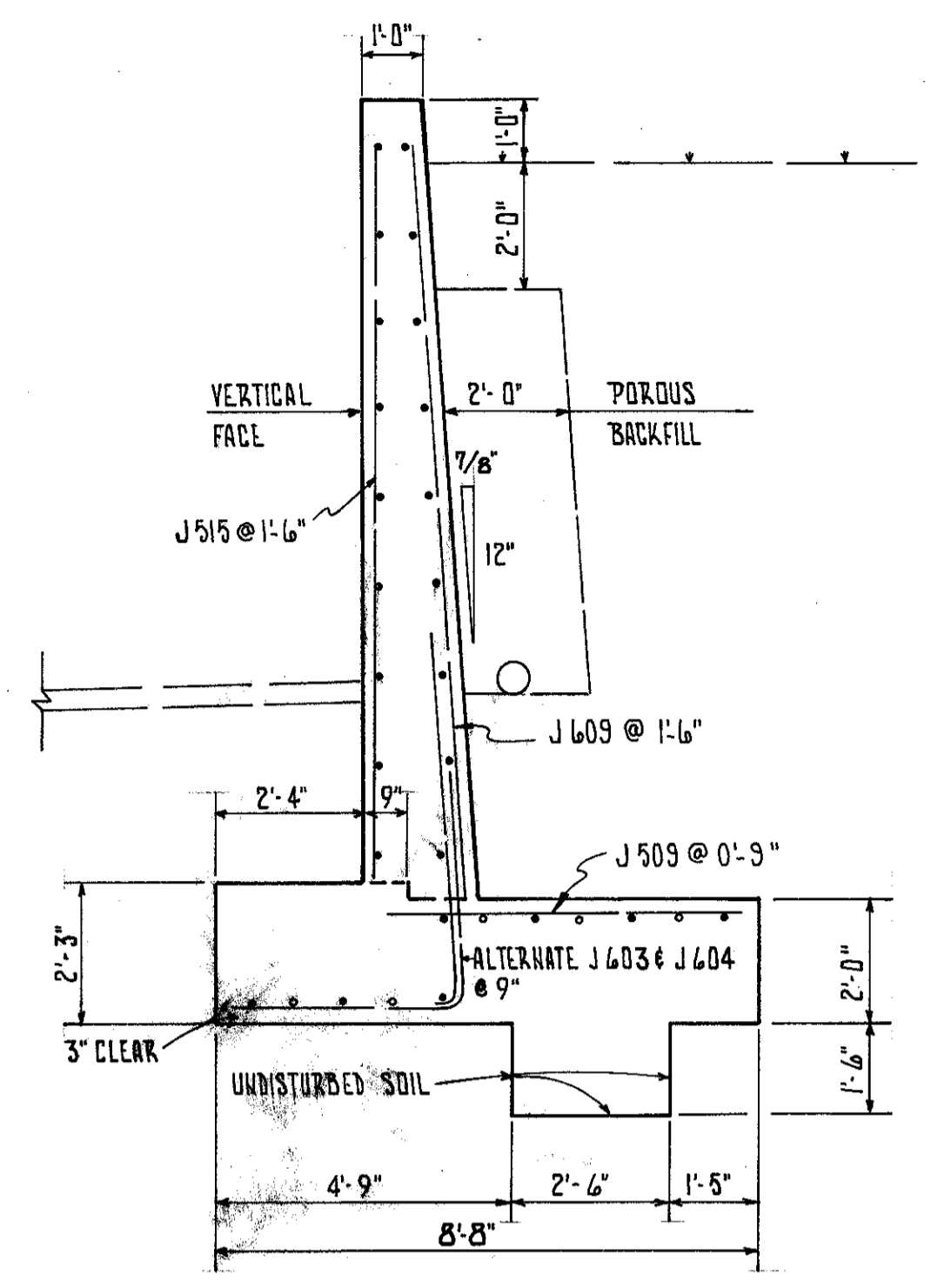
FINA REGION	STATE	PROJECT
5	OHIO	

85  
101

LAKE COUNTY  
LAK 306-6.15



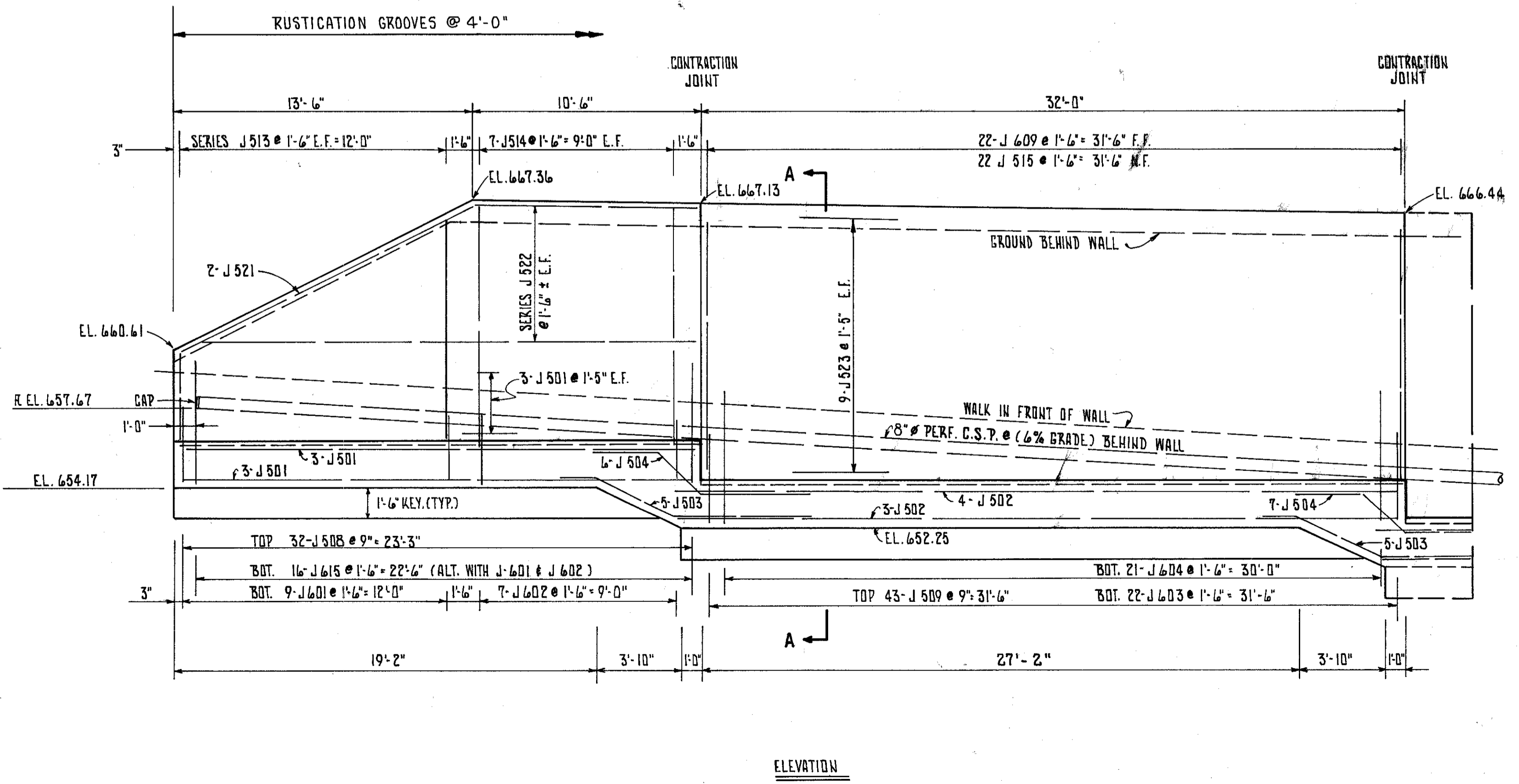
SEE CONTINUATION ON SHEET 26 OF 28.



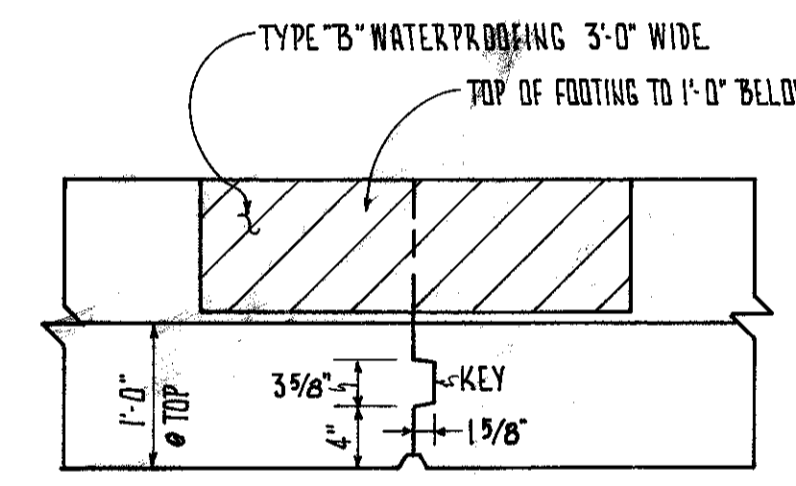
SECTION A-A

SECTION B-B

(SEE SHEET 26 OF 28)

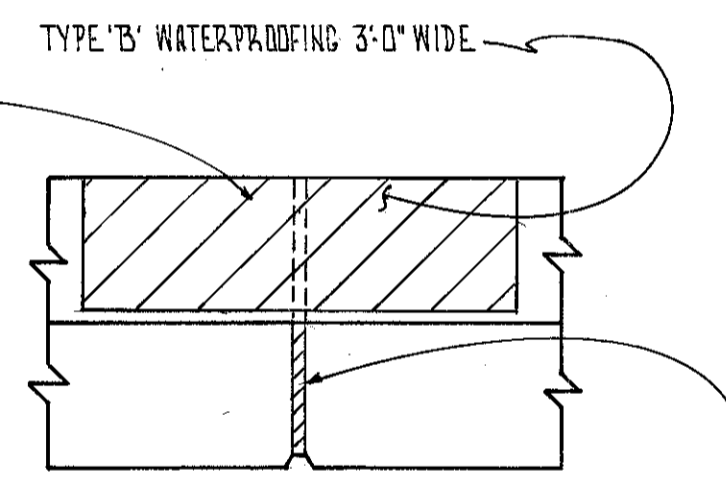


ELEVATION



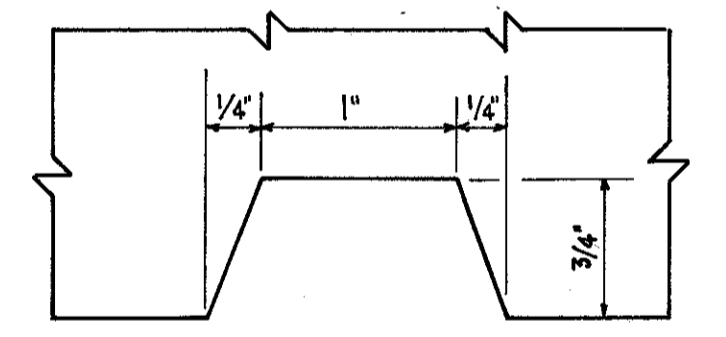
CONTRACTION JOINT

PLAN



EXPANSION JOINT

PLAN



VERTICAL RUSTICATION GROOVE @ 4'-0"

PLAN

BAR LAPS

\* 6 - 2'-0"  
# 5 - 1'-7"

RETAINING WALL STATION 15+97 TO STATION 17+53			
ESTIMATED QUANTITIES			
ITEM	TOTAL	UNIT	DESCRIPTION
503	820	C.Y.	UNCLASSIFIED EXCAVATION
511	104	C.Y.	CLASS 'C' CONCRETE, ABOVE FOOTING
511	143	C.Y.	CLASS 'C' CONCRETE, FOOTING
512	17	S.Y.	TYPE 'B' WATERPROOFING, 36" WIDE
509	12,719	LB.	REINFORCING STEEL
516	23	SF.	1" PREFORMED EXPANSION JOINT FILLER
518	156	LF.	8" PERFORATED, HELICAL CORR. STEEL PIPE T07.01
518	10	LF.	8" NON-PERFORATED, HELICAL CORR. STEEL PIPE, INCLUDING SPECIALS T07.01
518	96	C.Y.	POROUS BACKFILL
503	LUMP	LUMP	COFFERDAMS, CRIBS AND SHEETING

Sheet superseded by Sheet B5A, 3-27-81

**FRANKLIN CONSULTANTS INC.** 25 / 28  
Consulting Engineers  
COLUMBUS, OHIO

**RETAINING WALL**

STA. 15+97 TO STA. 16+53

DESIGNED	DRAWN	TRACED	CHECKED	REVIEWED	DATE	REVISED
HM	HM	BM	SM	JF	10/20/79	

BRUNING 44-132-30845-1