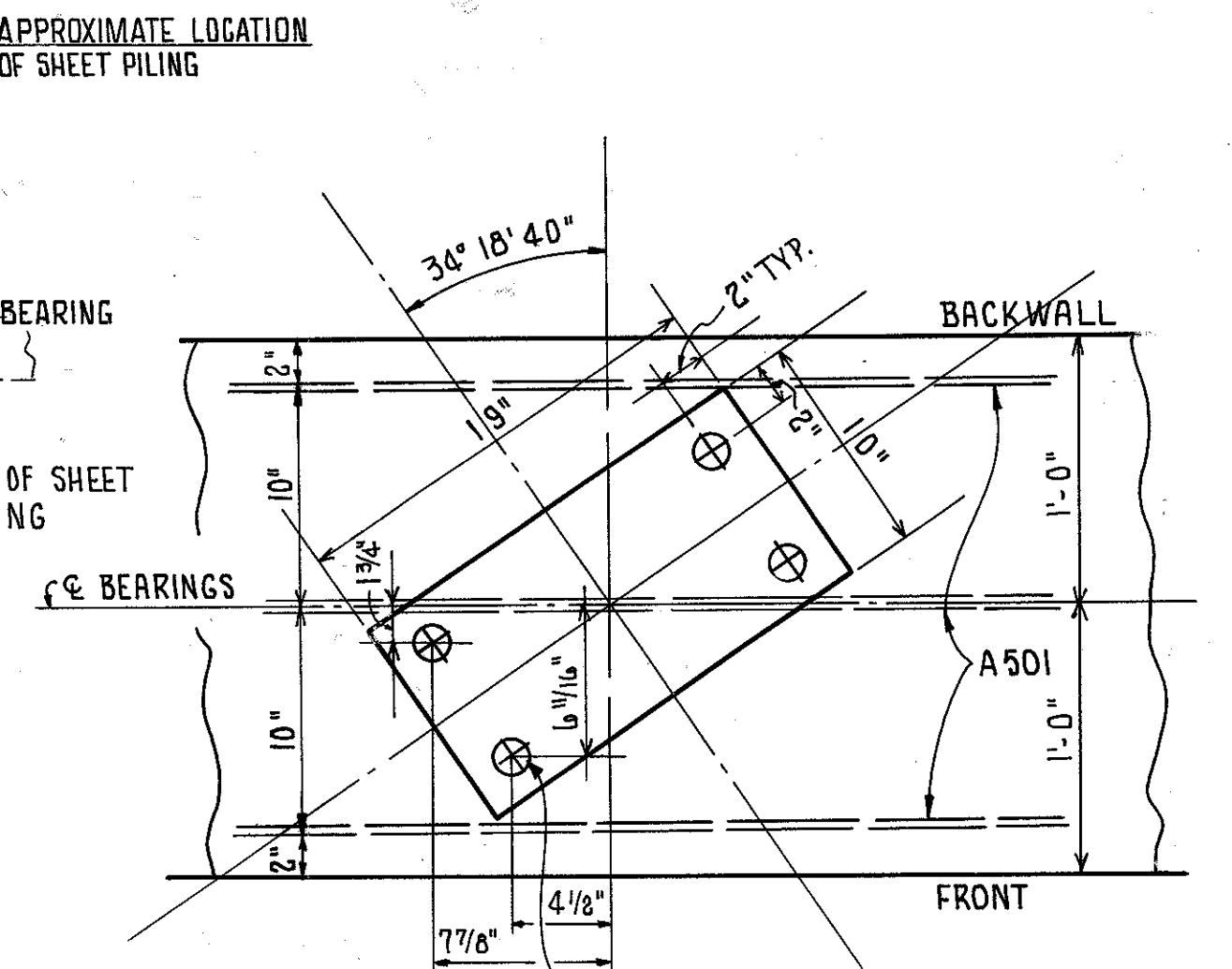
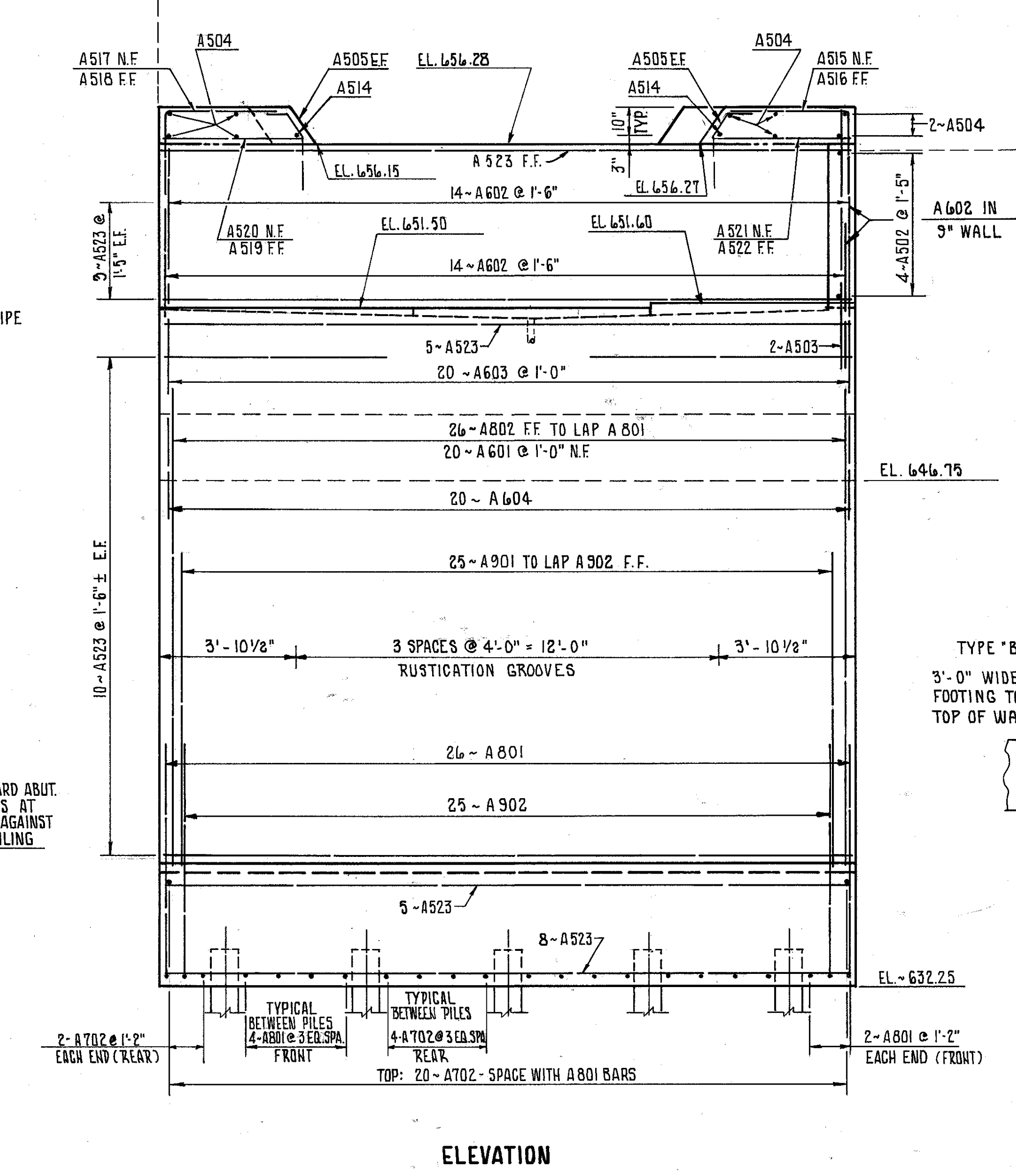
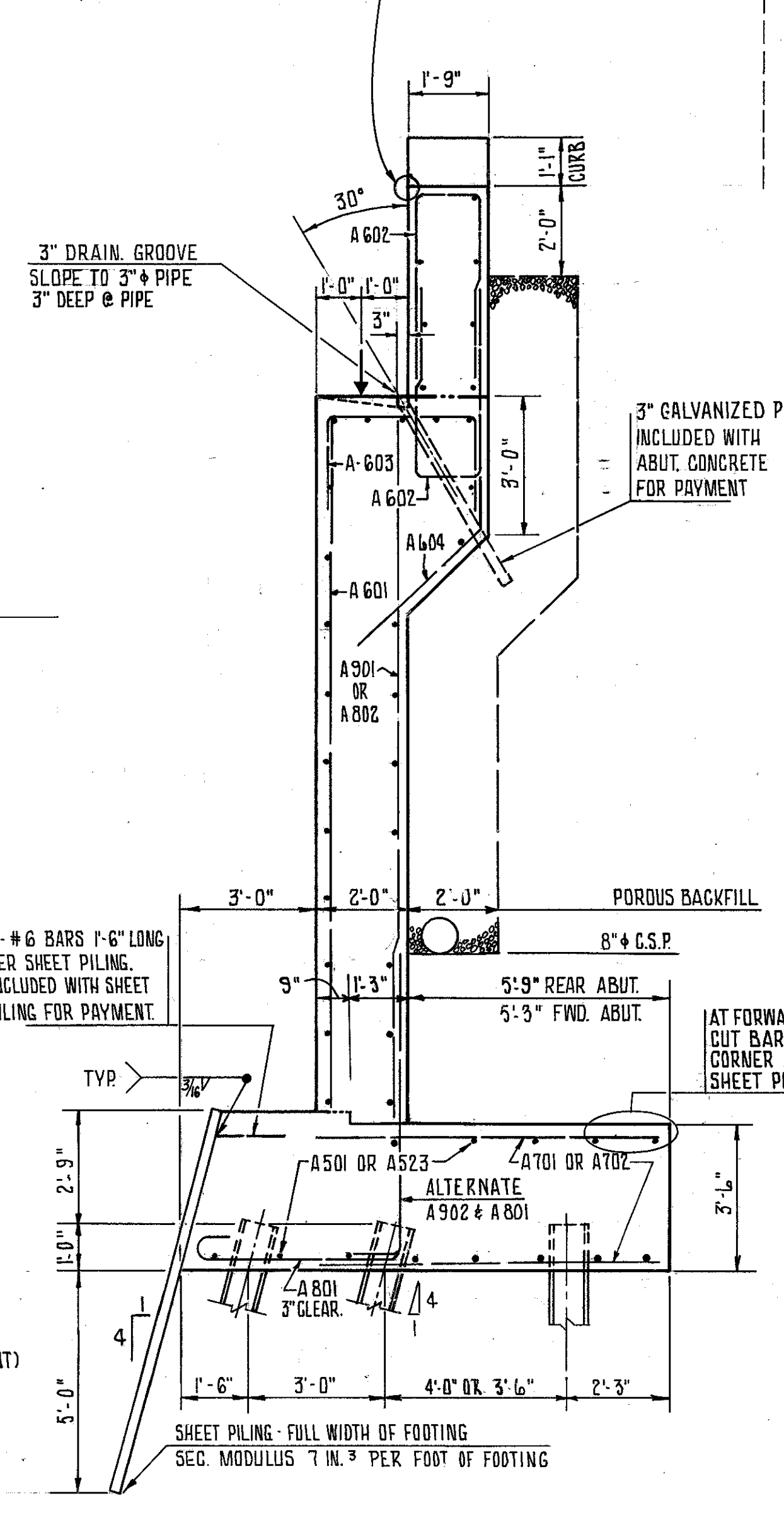
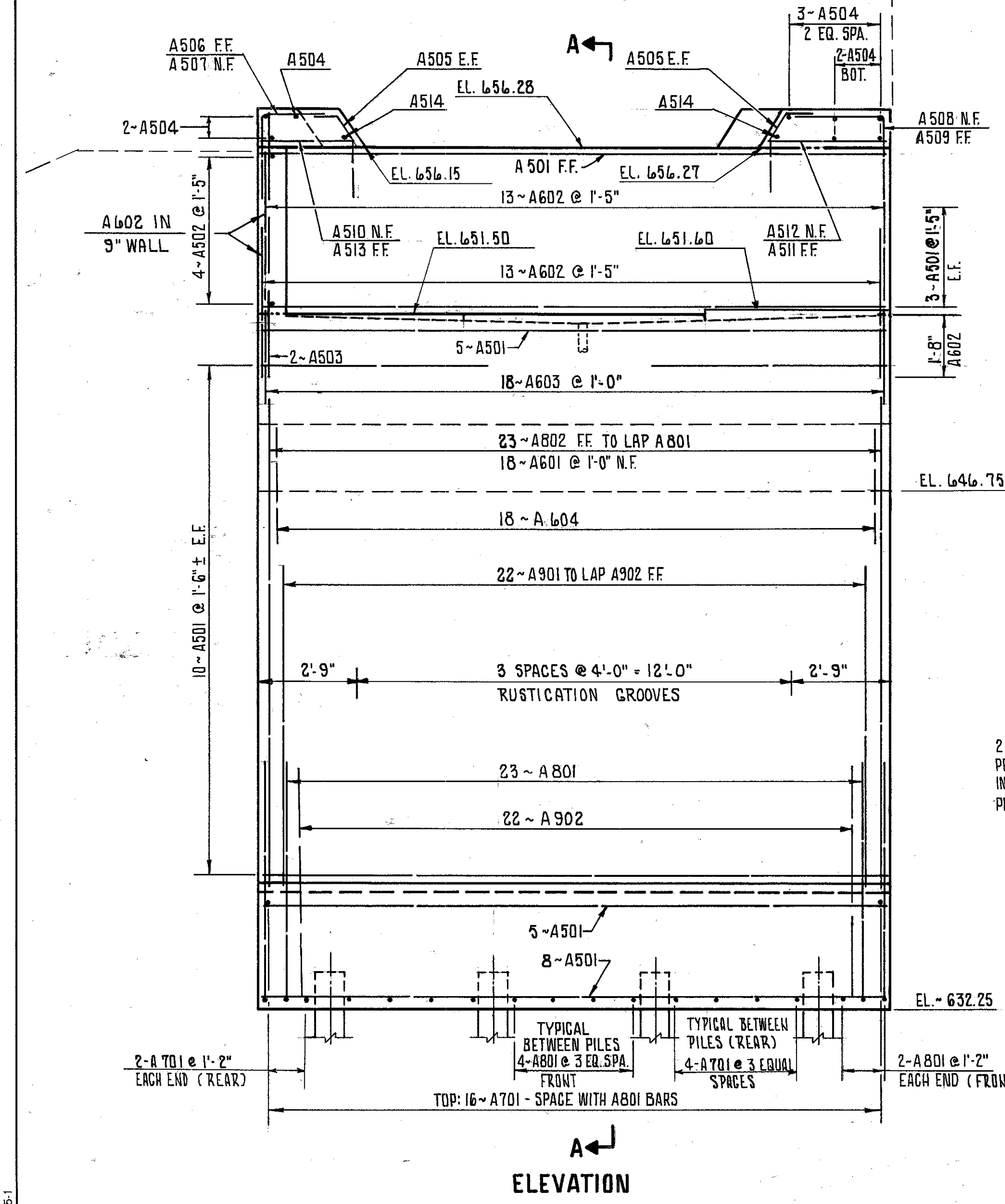
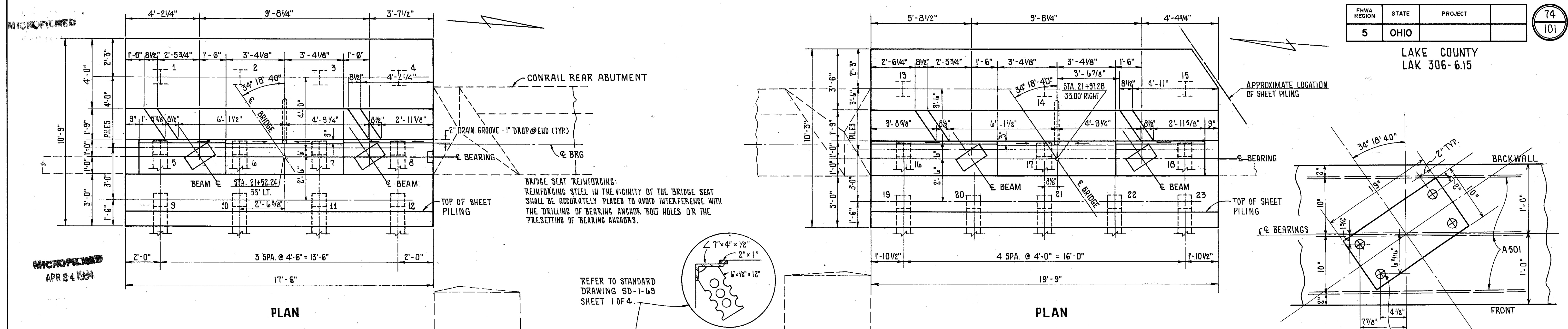


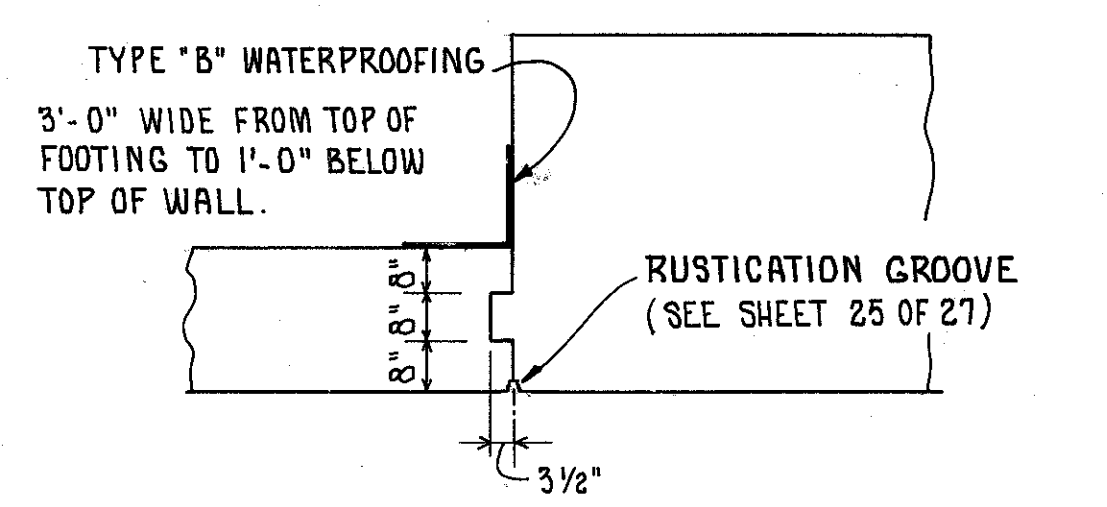
LAKE COUNTY  
LAK 306-6.15



**LEGEND**

N.F. = NEAR FACE	BAR LAP
FF. = FAR FACE	#9 = 3'-3"
E.F. = EACH FACE	#8 = 3'-0"
	#7 = 2'-3"
	#6 = 2'-0"
	#5 = 1'-7"

ALL PILES H<sub>T</sub> 10x42



**FRANKLIN CONSULTANTS INC.** 14 / 28  
Consulting Engineers  
COLUMBUS, OHIO

**ABUTMENT DETAILS**  
BRIDGE NO. LAK - 306 - 0637  
S.R. 306 UNDER SERVICE ROAD

DESIGNED	DRAWN	TRACED	CHECKED	REVIEWED	DATE	REVISED
SM	SM	GKS	HY	JF	10/22/79	

BRUNING 44132 30845-1