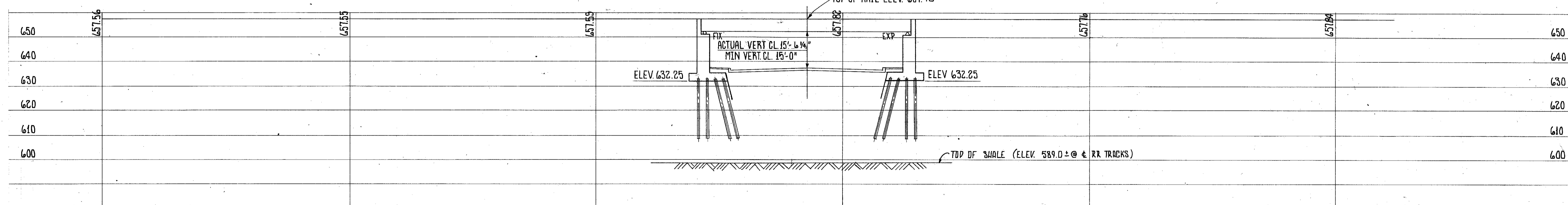
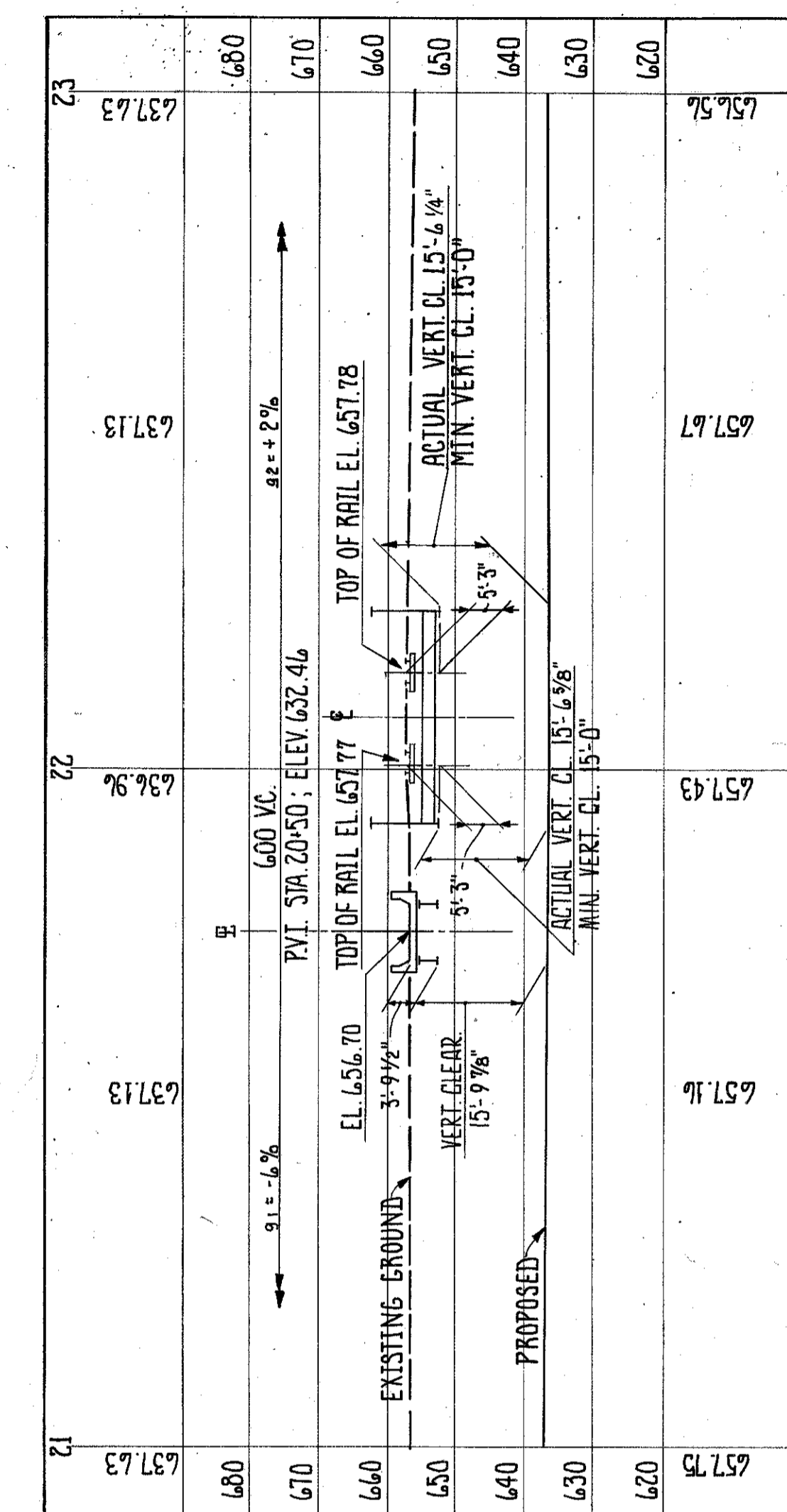
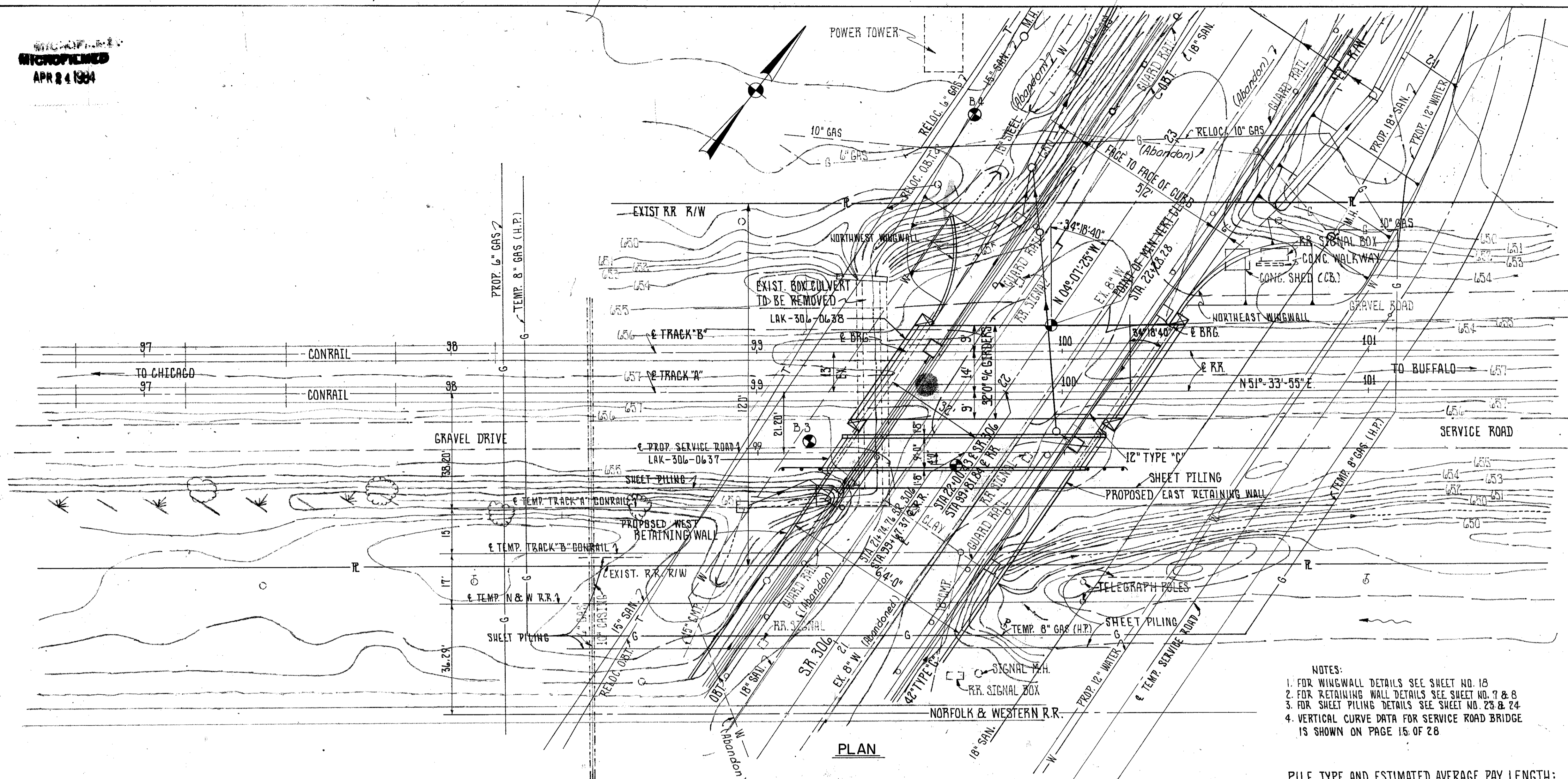


MICROFILMED  
APR 24 1984

| FHWA REGION | STATE | PROJECT |
|-------------|-------|---------|
| 5           | OHIO  |         |

72  
101

LAKE COUNTY  
LAK-306-6.15



**PROPOSED STRUCTURE**  
 TYPE: SIMPLE SPAN STEEL BEAM BRIDGE WITH REINFORCED CONCRETE SUBSTRUCTURES.  
 SPAN: 79'-10 3/4"  
 LOADING: H 15-44  
 SKEW: 34°-18'-40"  
 APPROACH SLAB: NONE  
 ALIGNMENT: TANGENT  
 SUPERELEVATION: NONE  
 BRIDGE NO. LAK-306-0637

**PROPOSED STRUCTURE**  
 TYPE: SIMPLE SPAN WELDED GIRDERS WITH TRANSVERSE FLOOR BEAMS AND REINFORCED CONCRETE SUBSTRUCTURES.  
 SPAN: 81'-8 3/8"% BEARINGS  
 LOADING: COOPER E-80 WITH IMPACT FOR DIESEL.  
 SKEW: 34°-18'-40" L.F.  
 ALIGNMENT: TANGENT  
 BRIDGE NO. LAK-306-0638

**FRANKLIN CONSULTANTS INC.** 12 / 28  
 Consulting Engineers  
 COLUMBUS, OHIO

**SITE PLAN**  
 CONSOLIDATED RAIL CORPORATION  
 over S.R. 306

Scale: 1" = 20'

S.R. 306

| DESIGNED | DRAWN | TRACED | CHECKED | REVIEWED | DATE | REVISED |
|----------|-------|--------|---------|----------|------|---------|
| HM       | B.B.  | GN     | SM      | JF       | 4-78 |         |

BRUNING 44-560 30645