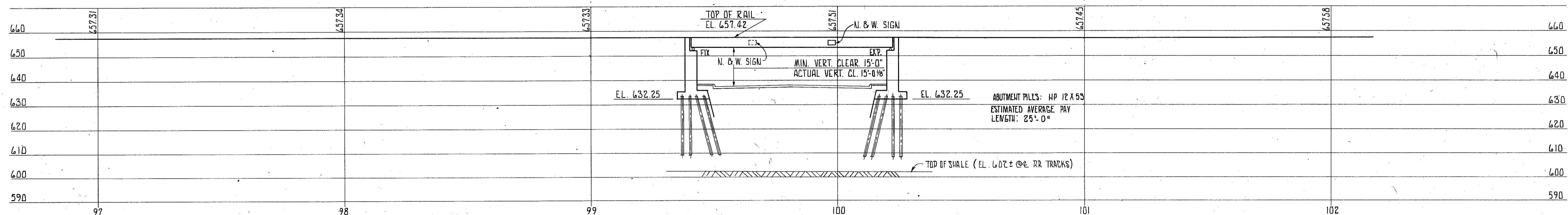
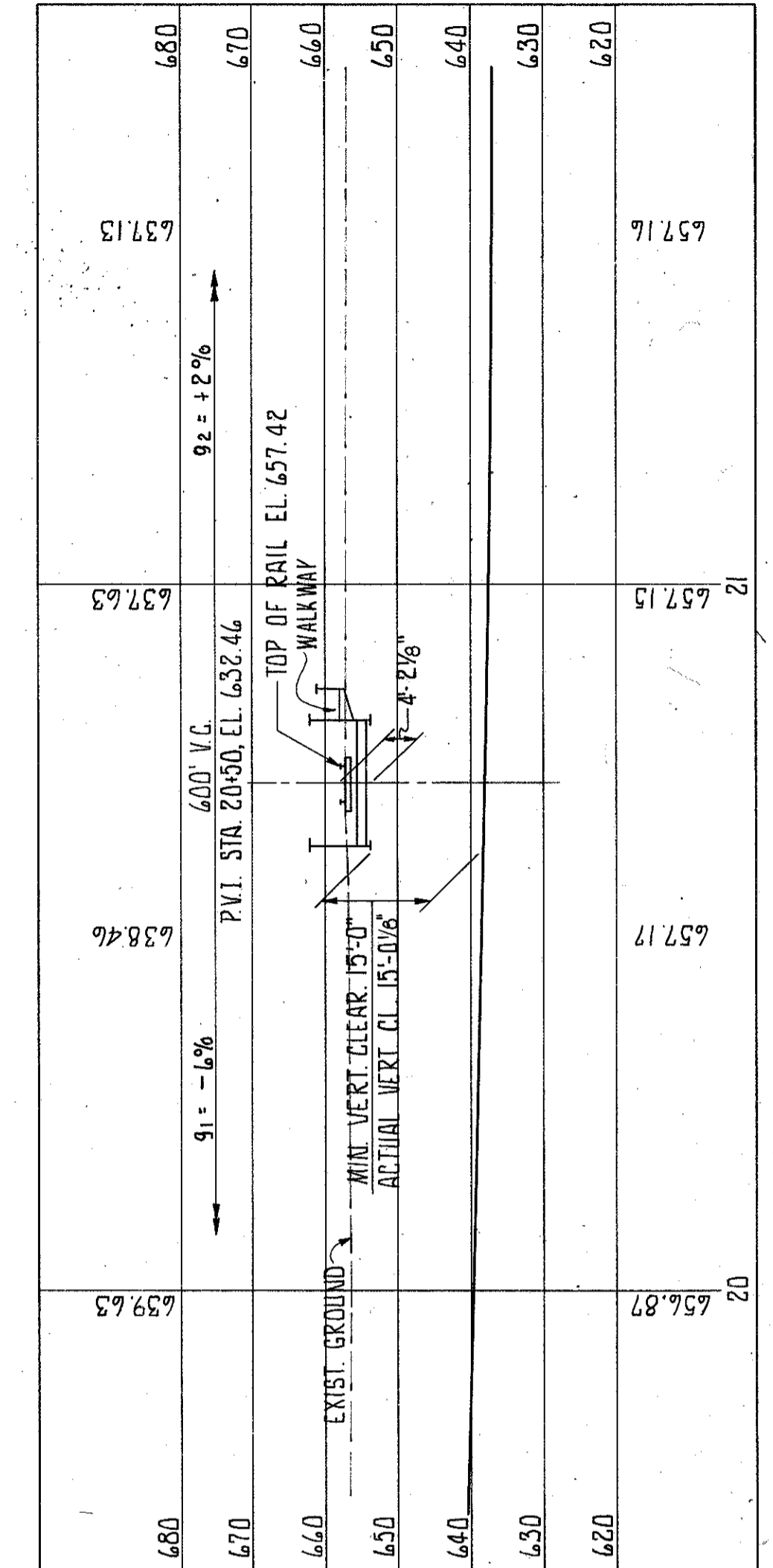
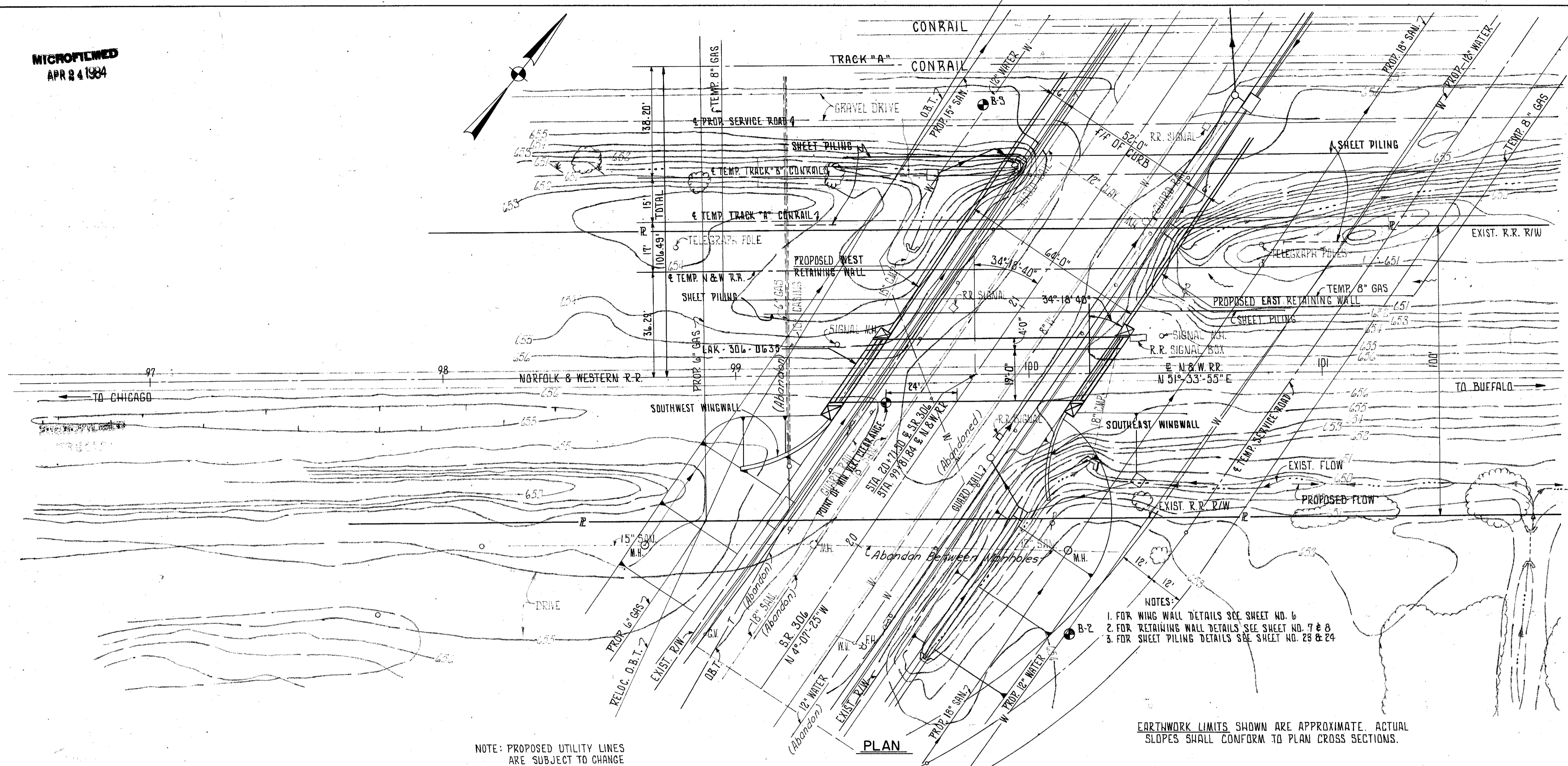


MICROFILMED
APR 8 4 1984

FHWA REGION	STATE	PROJECT
5	OHIO	

61
101

LAKE COUNTY
LAK-306-6.15



PROPOSED STRUCTURE

TYPE: SIMPLE SPAN WELDED GIRDER WITH TRANSVERSE FLOOR BEAMS AND REINF. CONCRETE SUBSTRUCTURE; ANTI-SKID INTERLOCK GRATE WALKWAY.

SPAN: 81'-8 3/8" BEARINGS.

LOADING: COOPER E-80 WITH IMPACT FOR DIESEL

SKREW: 34°-18'-40" L.F.

ALIGNMENT: TANGENT

WIDTH: 19'-0" c/c GIRDERS; SINGLE TRACK, AND A 4'-0" WALKWAY

FRANKLIN CONSULTANTS INC.		1 / 28	
Consulting Engineers		OHIO	
SITE PLAN			
BRIDGE No. LAK-306-0635			
S.R. 306 UNDER N. & W. RAILROAD			
Scale: 1"=20'		S.R. 306	
DESIGNED	DRAWN	TRACED	CHECKED
HY	B.B.	GN	SM
DATE	DATE	DATE	DATE
	11-78		