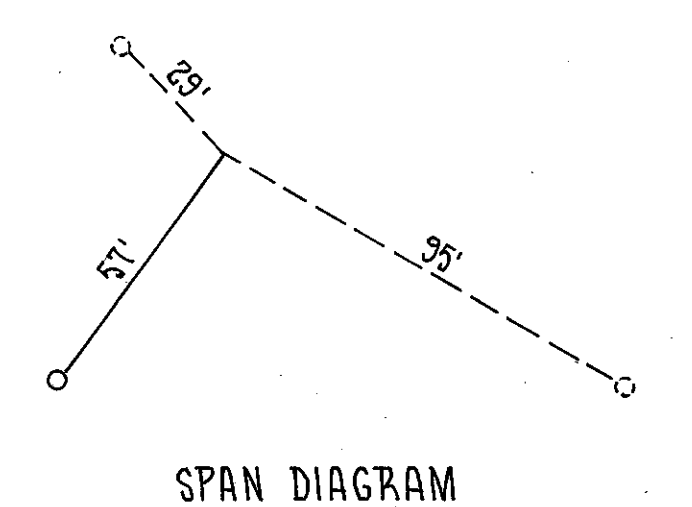
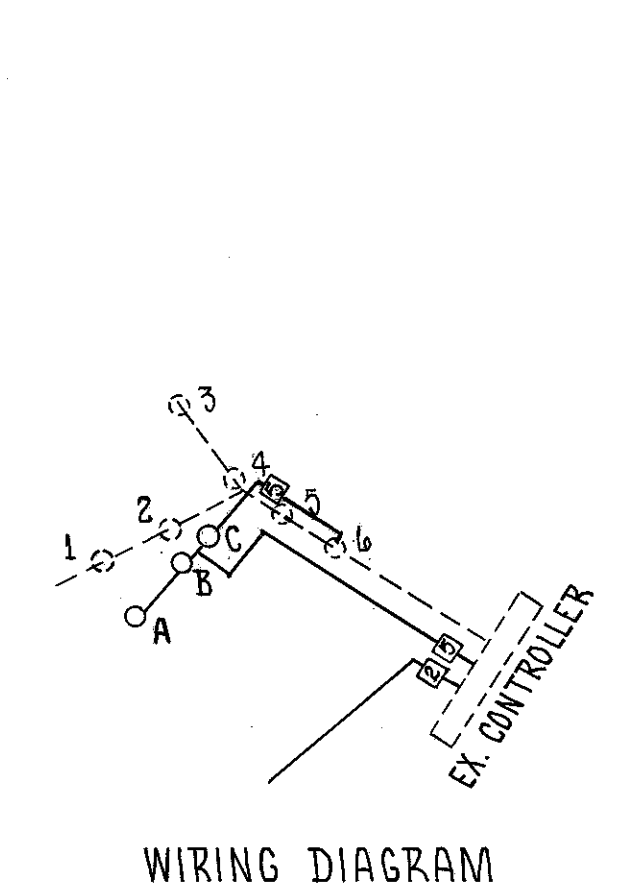
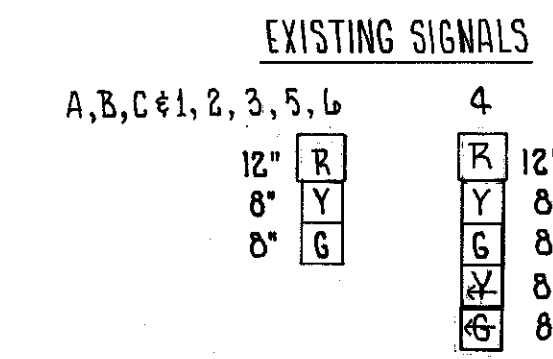
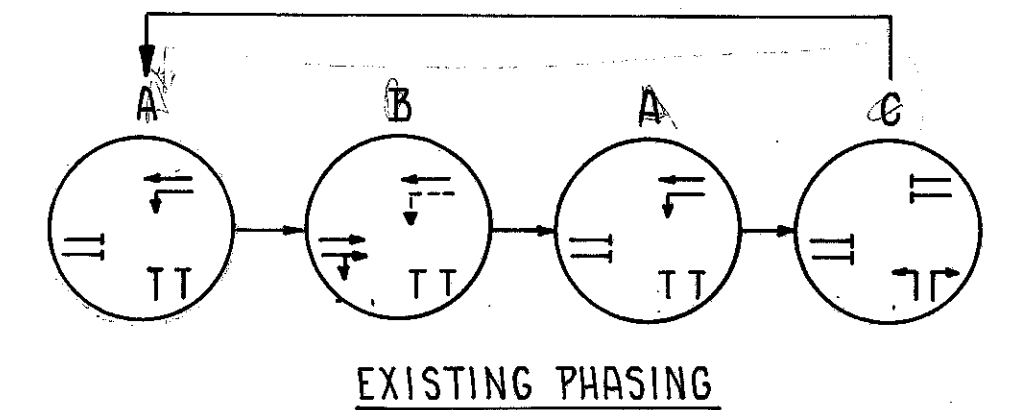
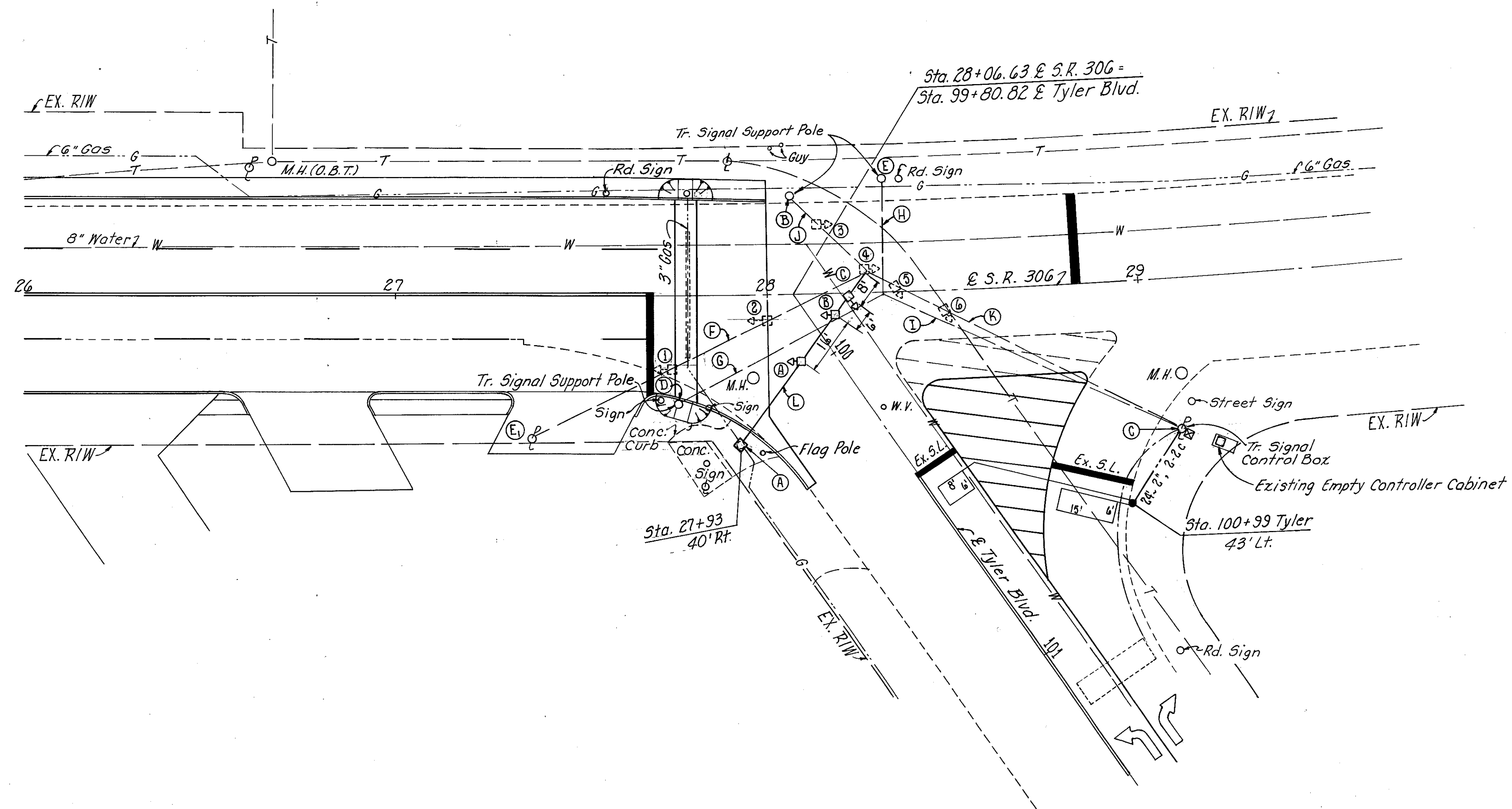
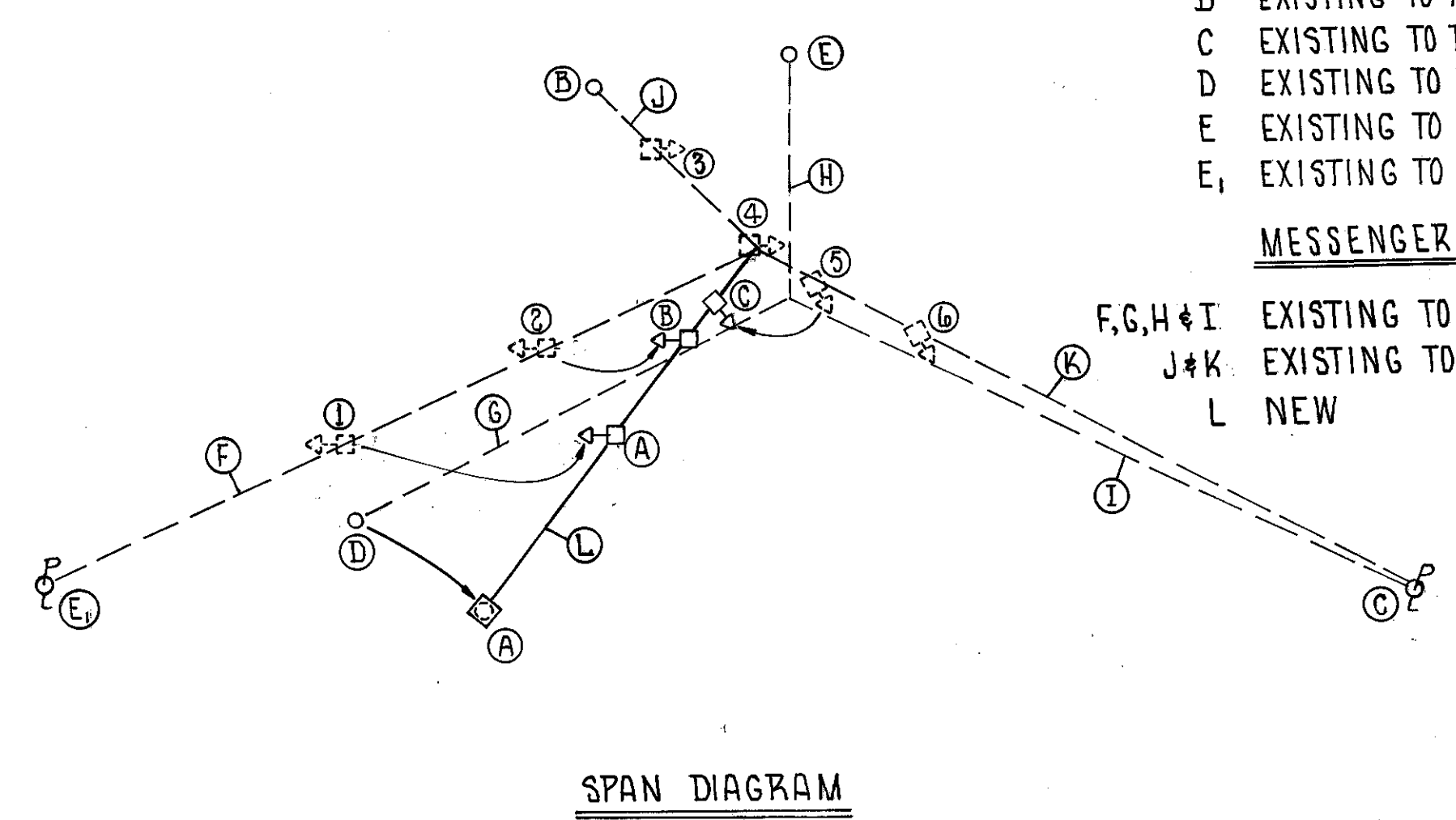


CALC: PCB 6-79  
CHK: GS 6-79



QUANT.	UNIT	ITEM	DESCRIPTION
1	EA.	625	PULL BOX, CONCRETE, 713.08
1	EA.	625	GROUND ROD
24	L.F.	625	CONDUIT, 2", 713.04
24	L.F.	625	TRENCH
1	EA.	859	REUSE OF STRAIN POLE
3	EA.		REUSE OF VEHICULAR SIGNAL HEAD
2	EA.		LOOP DETECTOR AMPLIFIER, 959.08
120	L.F.		LOOP DETECTOR PAVEMENT CUTTING
57	L.F.		MESSENGER WIRE, 7 STRAND 3/8", WITH ACCESSORIES
207	L.F.		SIGNAL CABLE, 5/C, N° 14 AWG
292	L.F.		LOOP DETECTOR WIRE
80	L.F.		LOOP DETECTOR LEAD IN CABLE
2.4	C.Y.	859	CONCRETE FOR ANCHOR BASE FOUNDATION
1	EA.	859	REMOVAL OF TRAFFIC SIGNAL INSTALLATION, TYLER BLVD.

- SIGNAL POLES**
- A RELOCATED FROM D
  - B EXISTING TO REMAIN
  - C EXISTING TO REMAIN
  - D EXISTING TO BE RELOCATED TO A
  - E EXISTING TO BE REMOVED
  - E<sub>1</sub> EXISTING TO BE REMOVED
- MESSENGER WIRE**
- F, G, H & I EXISTING TO BE REMOVED
  - J & K EXISTING TO REMAIN
  - L NEW



- LEGEND**
- ☐ RELOCATED EXISTING STRAIN POLE
  - EXISTING PULL BOX
  - PROPOSED PULL BOX
  - ◻ RELOCATED EXISTING SIGNAL HEAD (VEHICLE)
  - ◻ EXISTING SIGNAL HEAD (VEHICLE)
  - PROPOSED LOOP DETECTOR WIRE
  - - - EXISTING LOOP DETECTOR WIRE
  - - - PROPOSED UNDERGROUND CONDUIT
  - - - EXISTING UNDERGROUND CONDUIT
  - PROPOSED MESSENGER WIRE
  - - - EXISTING MESSENGER WIRE
  - ☑ EXISTING CONTROLLER
  - EXISTING STRAIN POLE