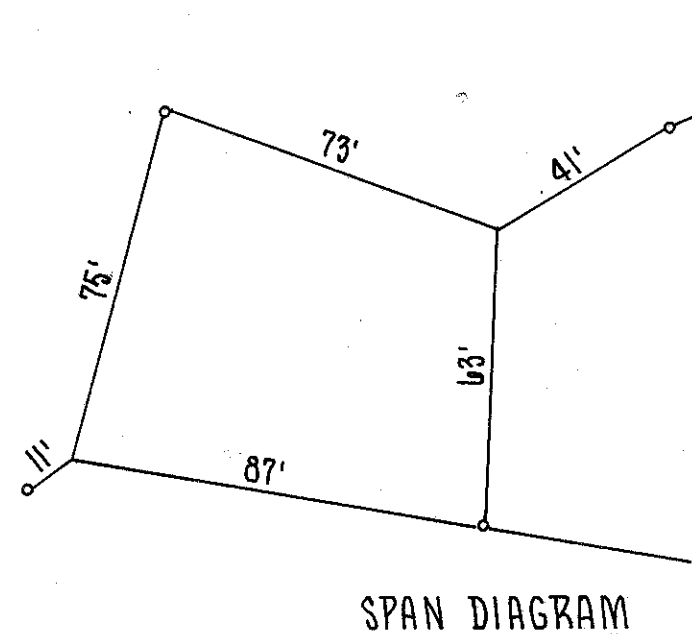
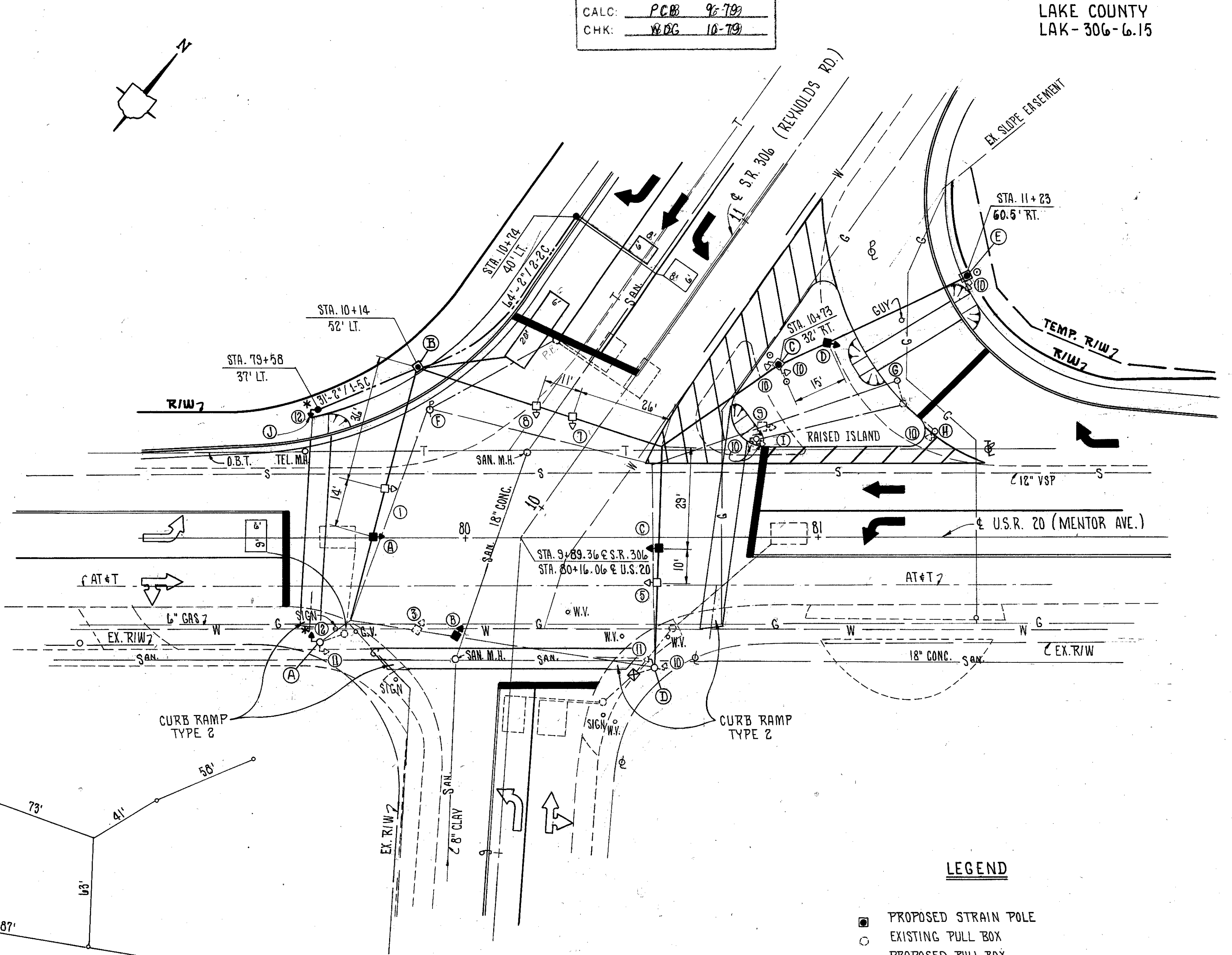
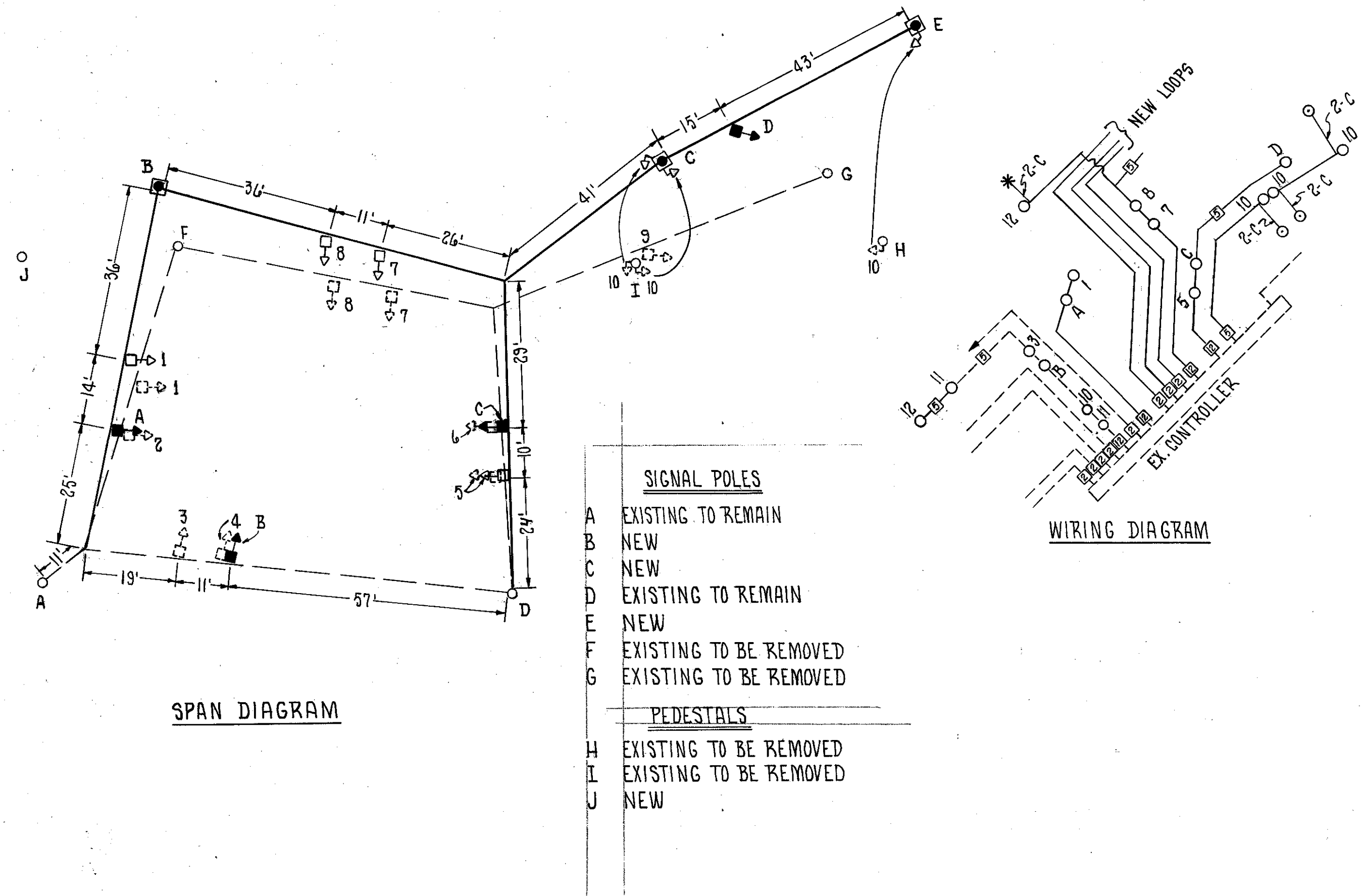


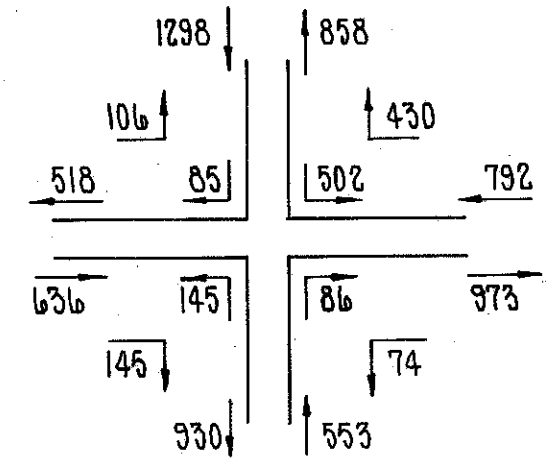
LAKE COUNTY
LAK-306-6.15

CALC: PCB 9-79
CHK: RDC 10-79

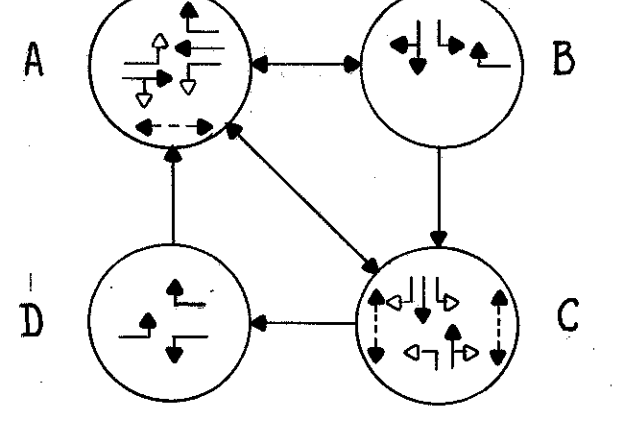


QUANT.	UNIT	ITEM	DESCRIPTION
1	EA.	625	PULL BOX, 713.08
4	EA.	625	GROUND RODS
95	L.F.	625	CONDUIT, 2" 713.04
95	L.F.	625	TRENCH
1	EA.	859	VEHICULAR SIGNAL HEAD, 3 SECTION, 12" LENS, ONE WAY
3	EA.		VEHICULAR SIGNAL HEAD, 5 SECTION, 12" LENS, ONE WAY
2	EA.		PEDESTRIAN SIGNAL HEAD, TYPE B2
2	EA.		PEDESTRIAN PUSH BUTTON
1	EA.		LOOP DETECTOR AMPLIFIER, 959.08
223	L.F.		LOOP DETECTOR PAVEMENT CUTTING
310	L.F.		MESSENGER WIRE 7 STRAND 3/8" WITH ACCESSORIES
60	L.F.		SIGNAL CABLE, 2/C N# 14 AWG
508	L.F.		SIGNAL CABLE, 5/C N# 14 AWG
432	L.F.		SIGNAL CABLE, 12/C N# 14 AWG
612	L.F.		LOOP DETECTOR WIRE
808	L.F.		LOOP DETECTOR LEAD IN CABLE
6.9	C.Y.		CONCRETE FOR ANCHOR BASE FOUNDATIONS
1	EA.		STRAIN POLE, TYPE TC-81.10, DESIGN 7, 30 FEET
1	EA.		STRAIN POLE, TYPE TC-81.10, DESIGN 6, 30 FEET
1	EA.		STRAIN POLE, TYPE TC-81.10, DESIGN 3, 26 FEET
1	EA.		PEDESTAL, 8 FEET
4	EA.		REUSE OF VEHICULAR SIGNAL HEAD
3	EA.		REUSE OF PEDESTRIAN SIGNAL HEAD
3	EA.		REUSE OF PEDESTRIAN PUSHBUTTON, WITH SIGN
1	EA.		REMOVAL OF TRAFFIC SIGNAL INSTALLATION, MENTOR AVE.
5	EA.	859	CABLE SUPPORT ASSEMBLY
7	EA.	859	COVERING OF VEHICULAR SIGNAL HEAD

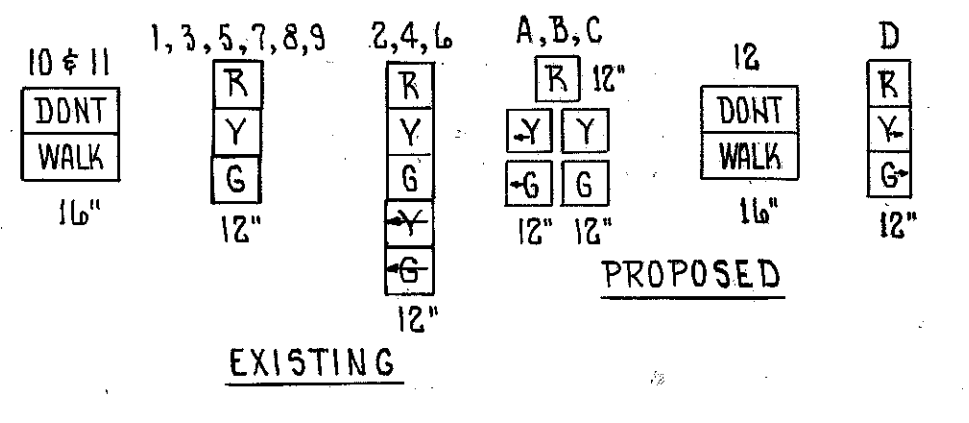
1981 PEAK HOUR VOLUMES



EXISTING & PROPOSED PHASING



EXISTING & PROPOSED SIGNALS



LEGEND

- PROPOSED STRAIN POLE
- EXISTING PULL BOX
- PROPOSED PULL BOX
- ▲ PROPOSED SIGNAL HEAD (VEHICLE)
- ◀◻ RELOCATED EXISTING SIGNAL HEAD (VEHICLE)
- ◻ EXISTING SIGNAL HEAD (VEHICLE)
- ▲◻ PROPOSED SIGNAL HEAD (PEDESTRIAN)
- ◻◻ RELOCATED SIGNAL HEAD (PEDESTRIAN)
- ◻◻ EXISTING SIGNAL HEAD (PEDESTRIAN)
- ◻ PROPOSED PEDESTRIAN PUSH BUTTON
- ◻◻ RELOCATED PEDESTRIAN PUSH BUTTON
- PROPOSED LOOP DETECTOR WIRE
- - - EXISTING LOOP DETECTOR WIRE
- - - PROPOSED UNDERGROUND CONDUIT
- - - EXISTING UNDERGROUND CONDUIT
- - - PROPOSED MESSENGER WIRE
- - - EXISTING MESSENGER WIRE
- ⊠ EXISTING CONTROLLER