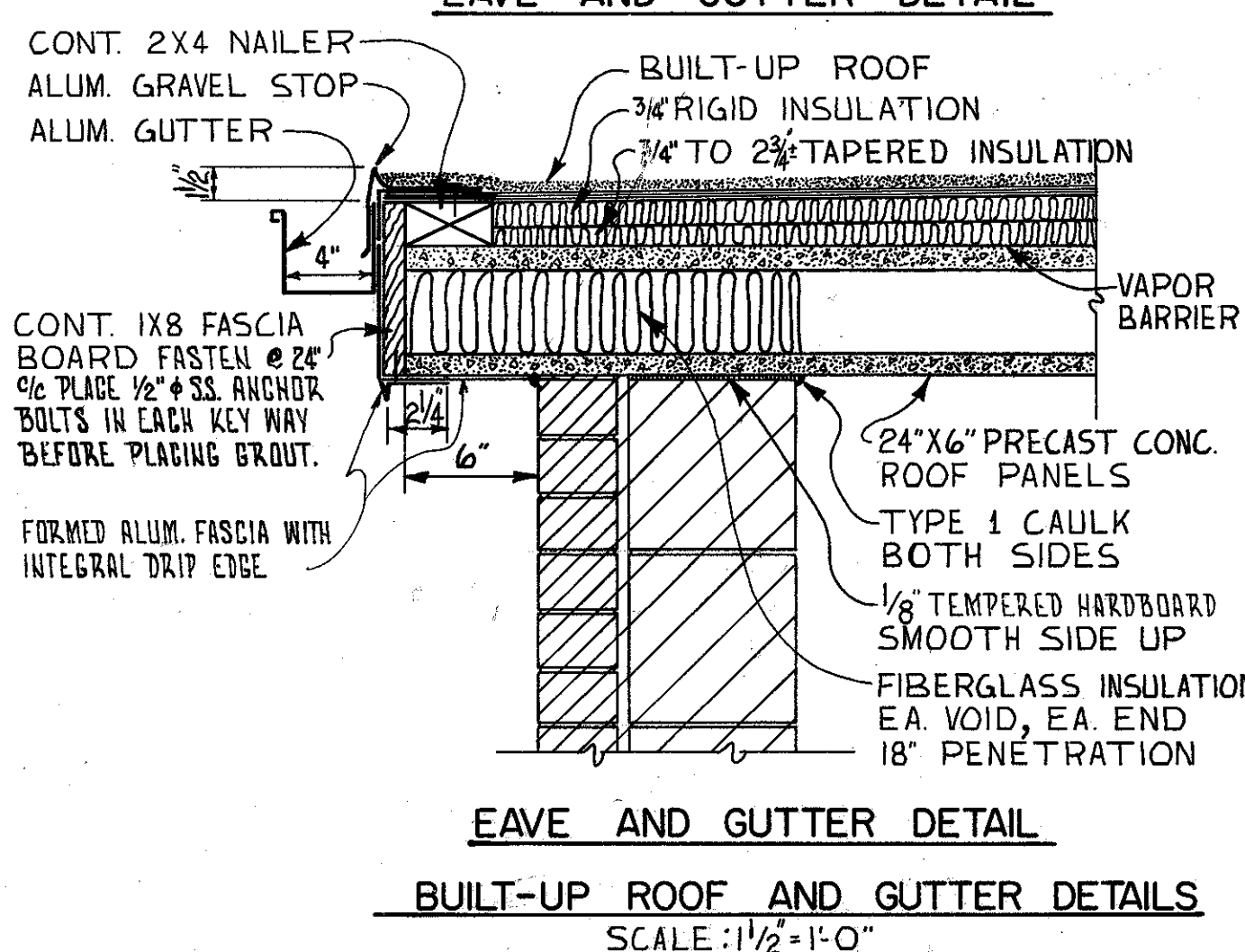
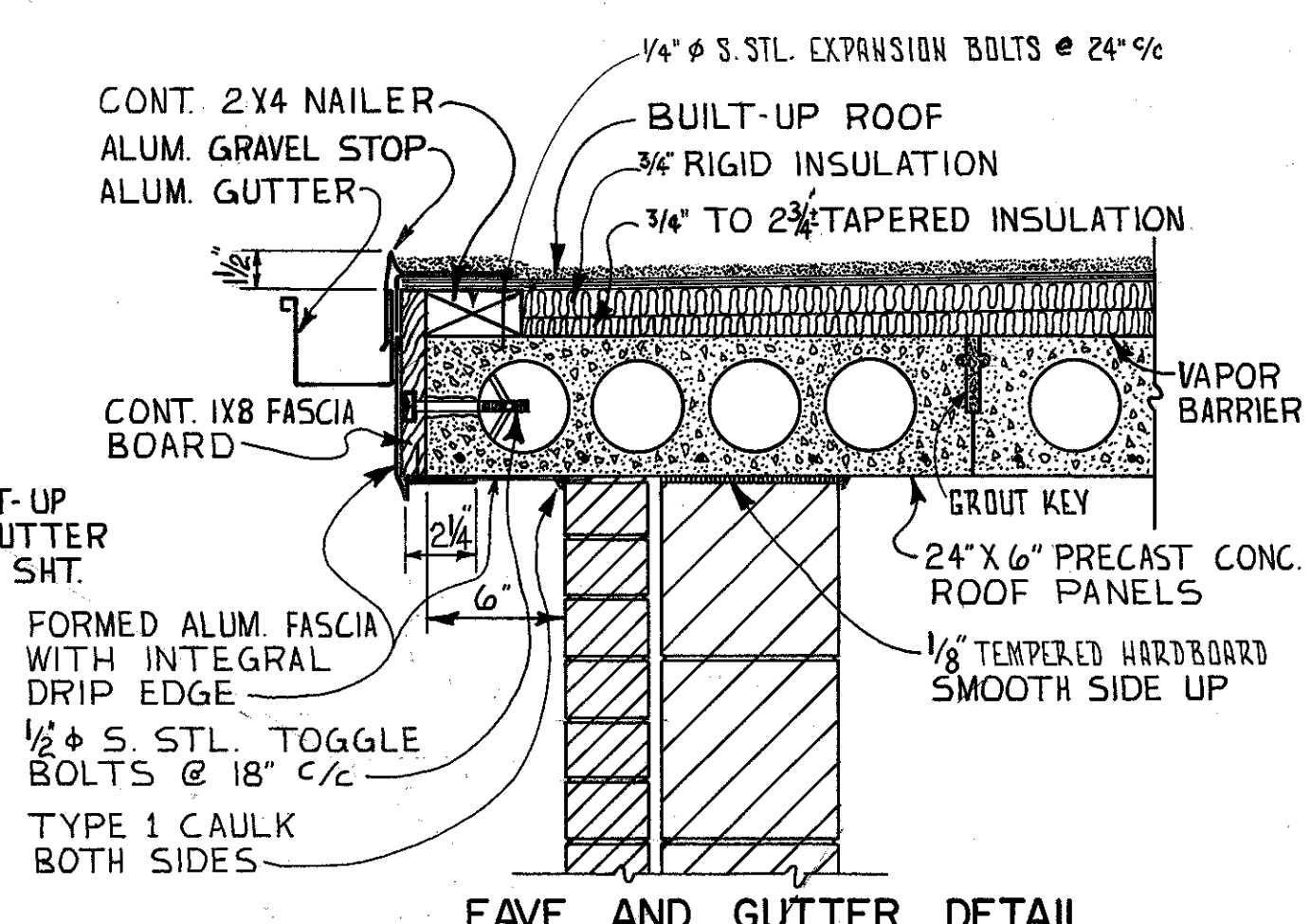
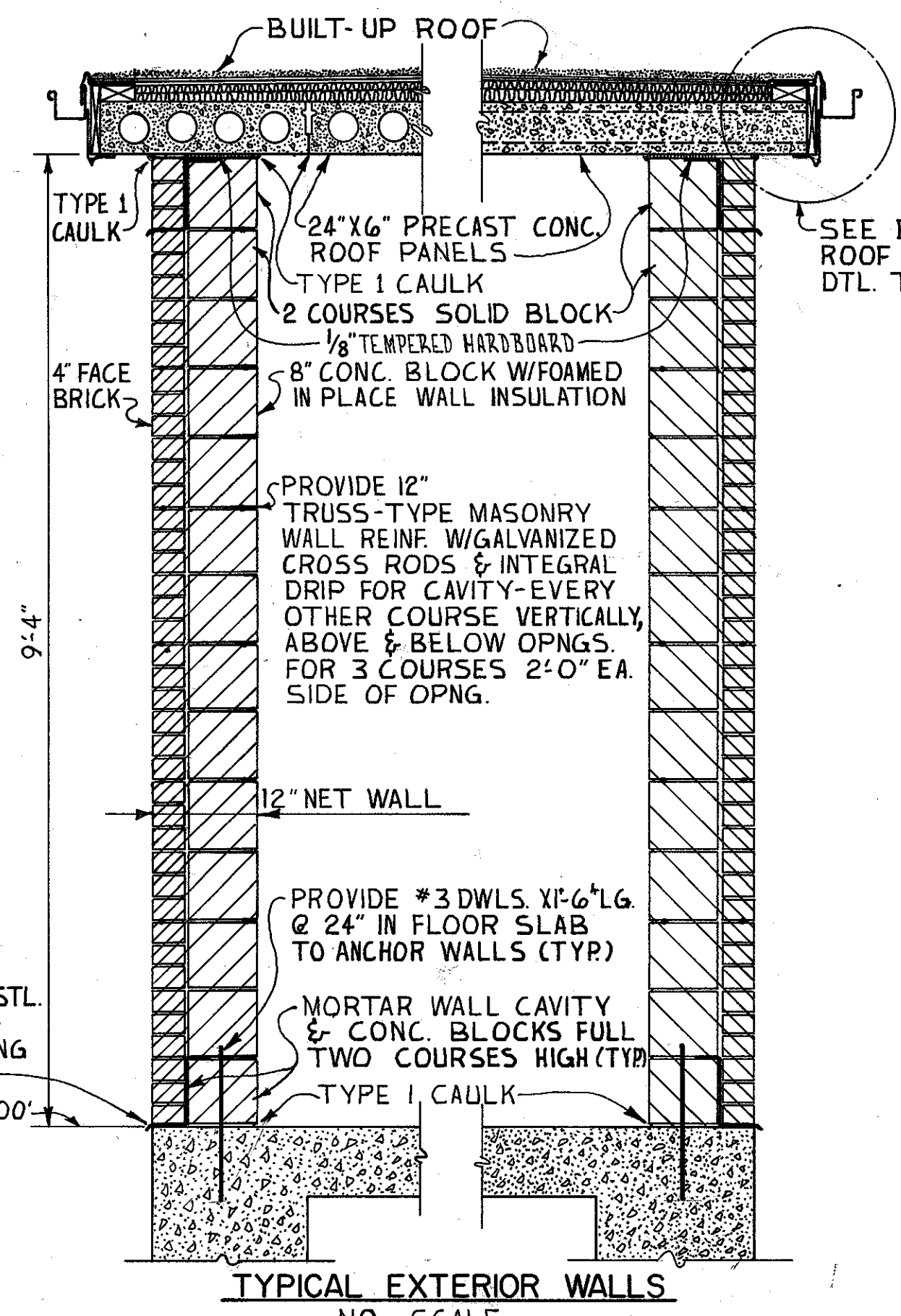
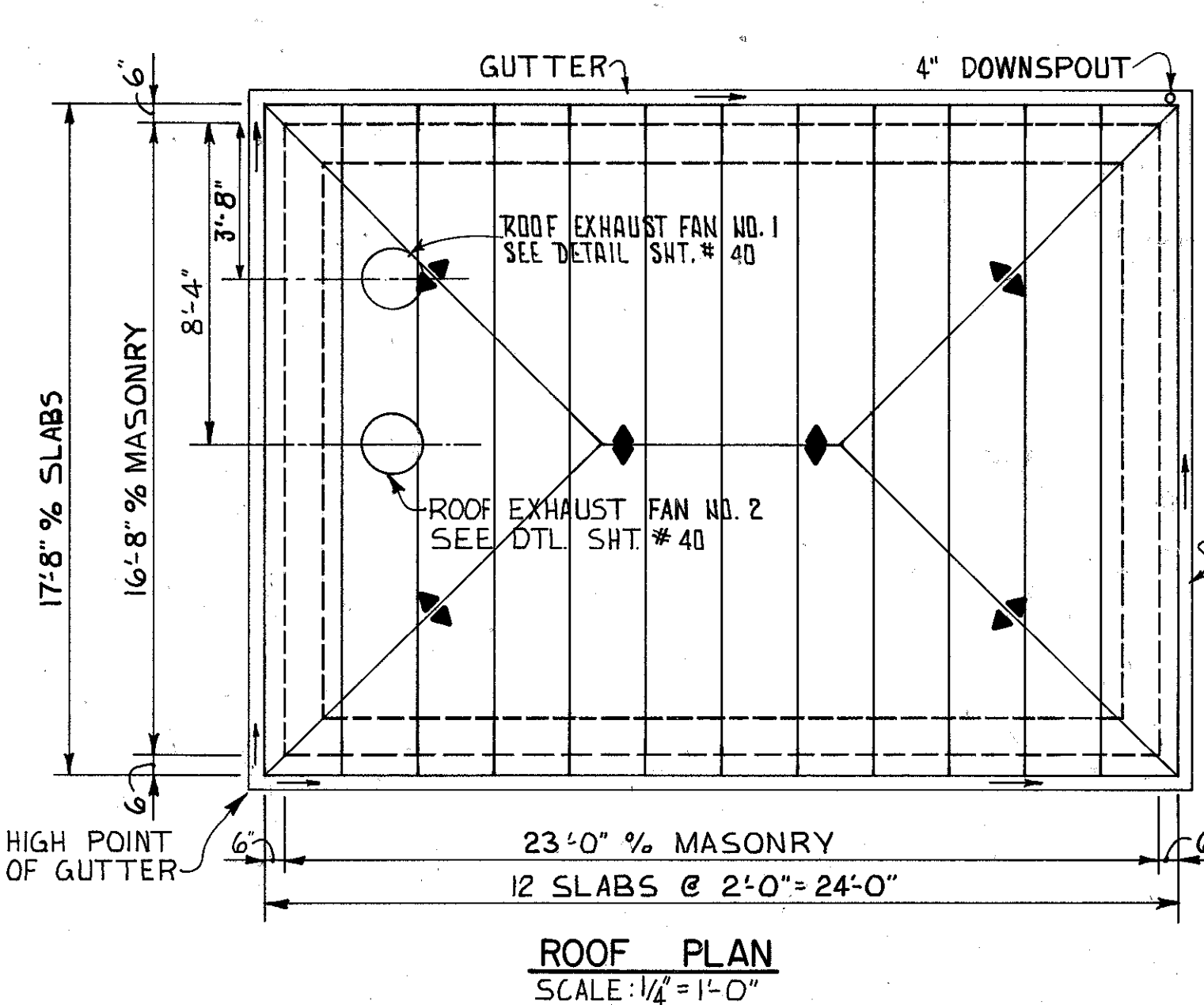
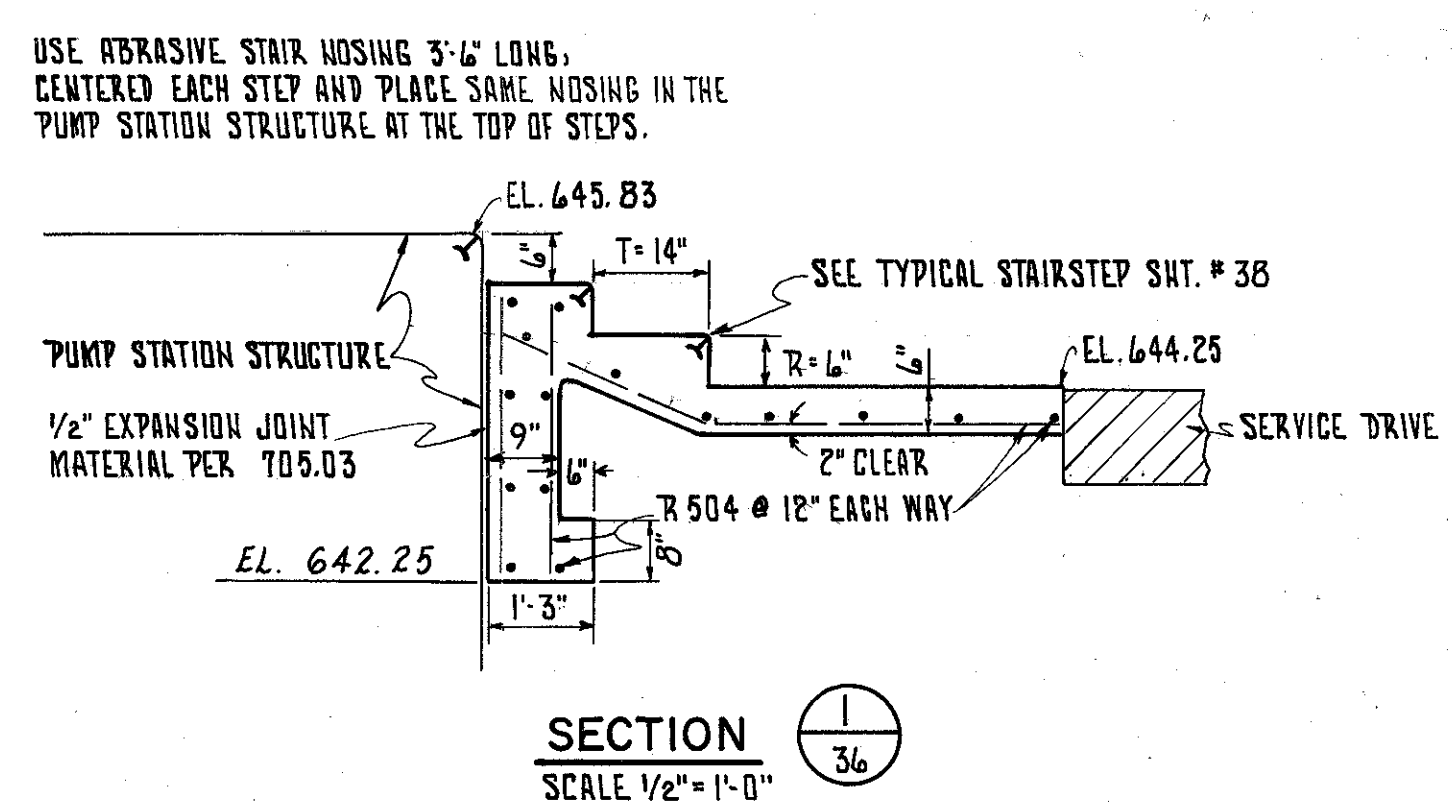
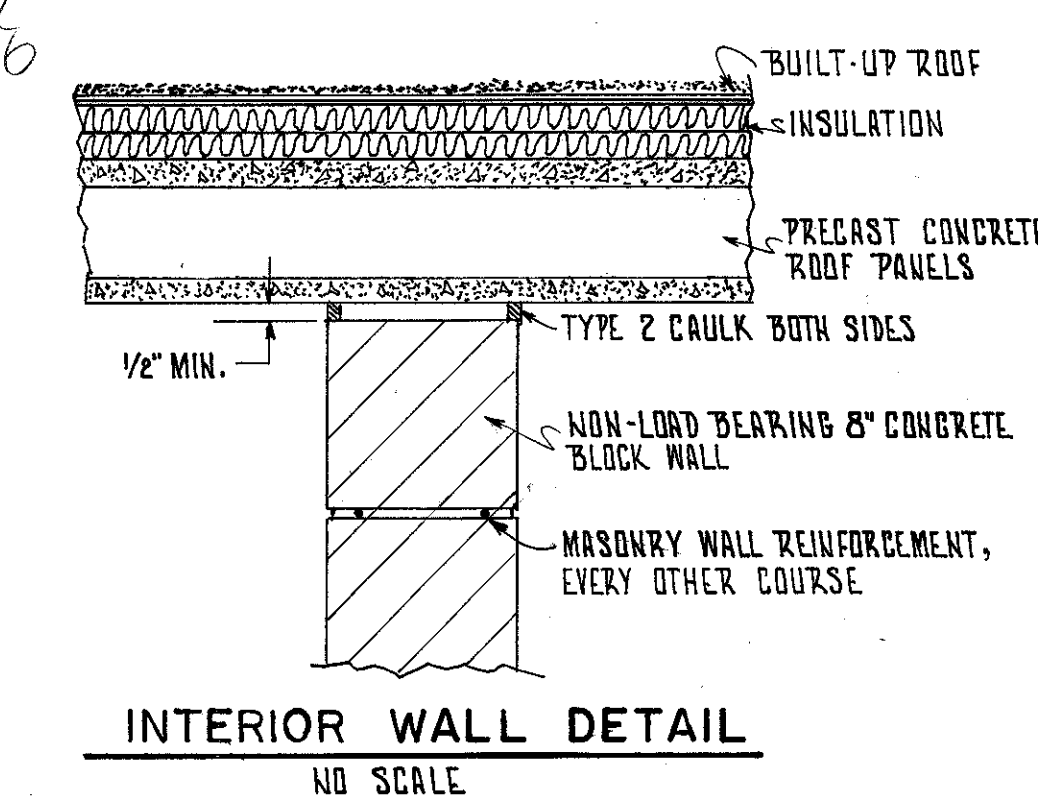
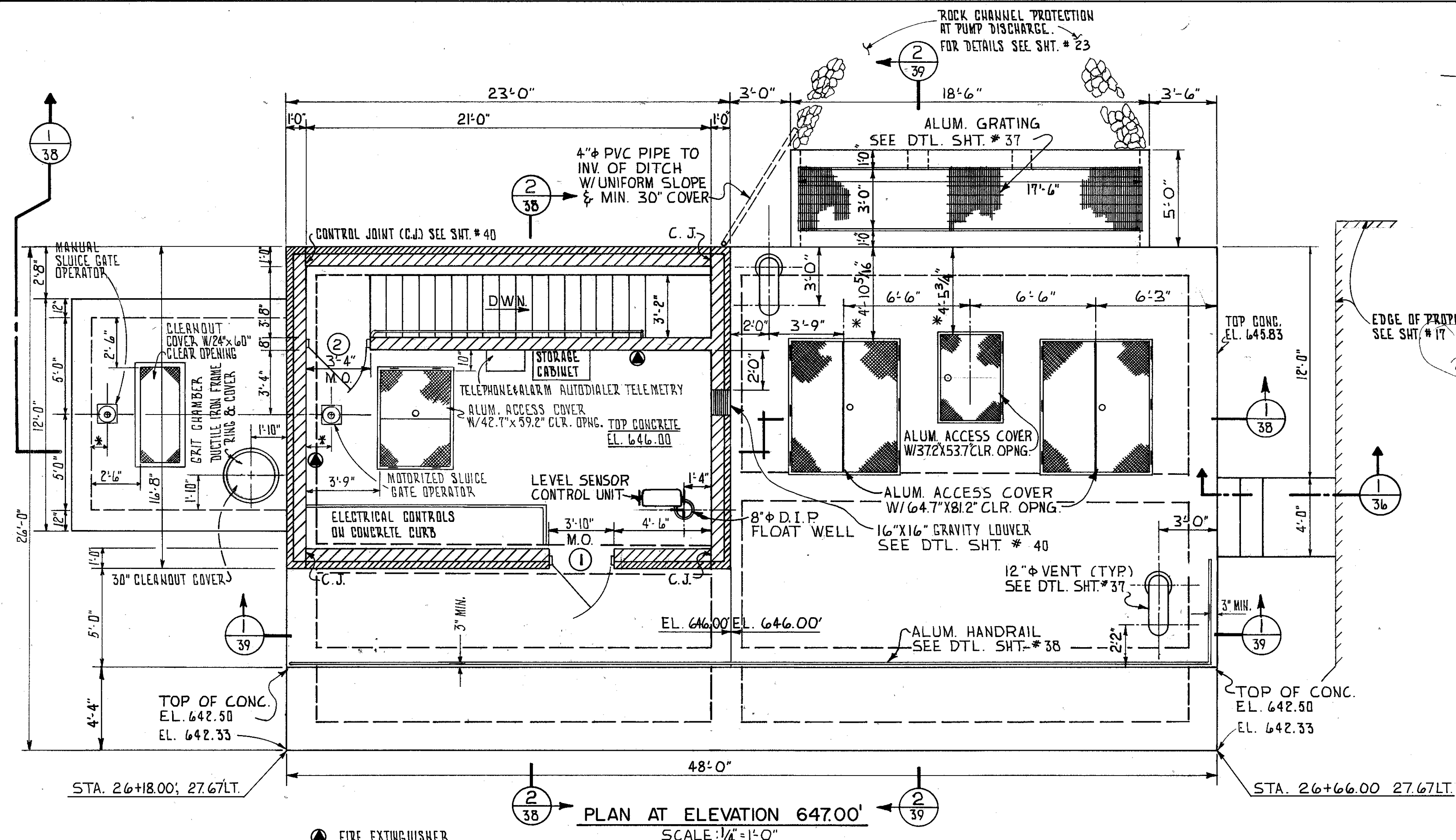


FHWA REGION	STATE	PROJECT	
5	OHIO		

36  
101

LAKE COUNTY  
LAK-306-6.15



- GENERAL NOTES:
- 1) PROVIDE ADEQUATE SUPPORTS AND HANGERS FOR ALL PIPES, FITTINGS, EQUIPMENT, ETC..
  - 2) COORDINATE THIS SHT. WITH RELATED STRUCTURAL, AND ELECTRICAL SHTS.
  - 3) CONTRACTOR SHALL VERIFY ALL DIMENSIONS OF MFG. EQUIPMENT FOR COMPATIBILITY WITH THIS DWG. BEFORE INSTALLATION OR FABRICATION. IF THERE IS A CONFLICT IMMEDIATELY NOTIFY THE ENGINEER.
  - 4) ALL CUTOUTS, ANCHOR BOLTS, SUPPORTS, ETC. SHALL BE LOCATED AND SIZED AS RECOMMENDED BY THE MFG. UNLESS NOTED OTHERWISE. IF THERE IS A CONFLICT IMMEDIATELY NOTIFY THE ENGINEER.
  - 5) \* DIMENSIONS TO BE DETERMINED BY OR VERIFIED WITH EQUIPMENT MFG. BEFORE INSTALLATION AND OR FABRICATION.

A ROOF SLOPE OF 1/4" / FOOT TO ACHIEVE THE DENOTED DRAINAGE PATTERN SHALL BE ACCOMPLISHED BY USING A TAPERED SYSTEM OF INSULATION BOARD BENEATH THE UPPER 3/4" RIGID INSULATION BOARD.

--- DENOTES LINE OF INTERSECTION OF SLOPING PLANES.  
--- DENOTES DIRECTION OF SLOPE.

FRANKLIN CONSULTANTS INC. Consulting Engineers						
COLUMBUS, OHIO						
PUMP STATION ROOF PLAN, PLAN AT ELEVATION 647.0 AND WALL DETAILS						
LAKE COUNTY			S.R. 306			
DESIGNED	DRAWN	TRACED	CHECKED	REVIEWED	DATE	REVISED
REX	DLF	DLF		WP		

BRUNING 44-132 30645-1