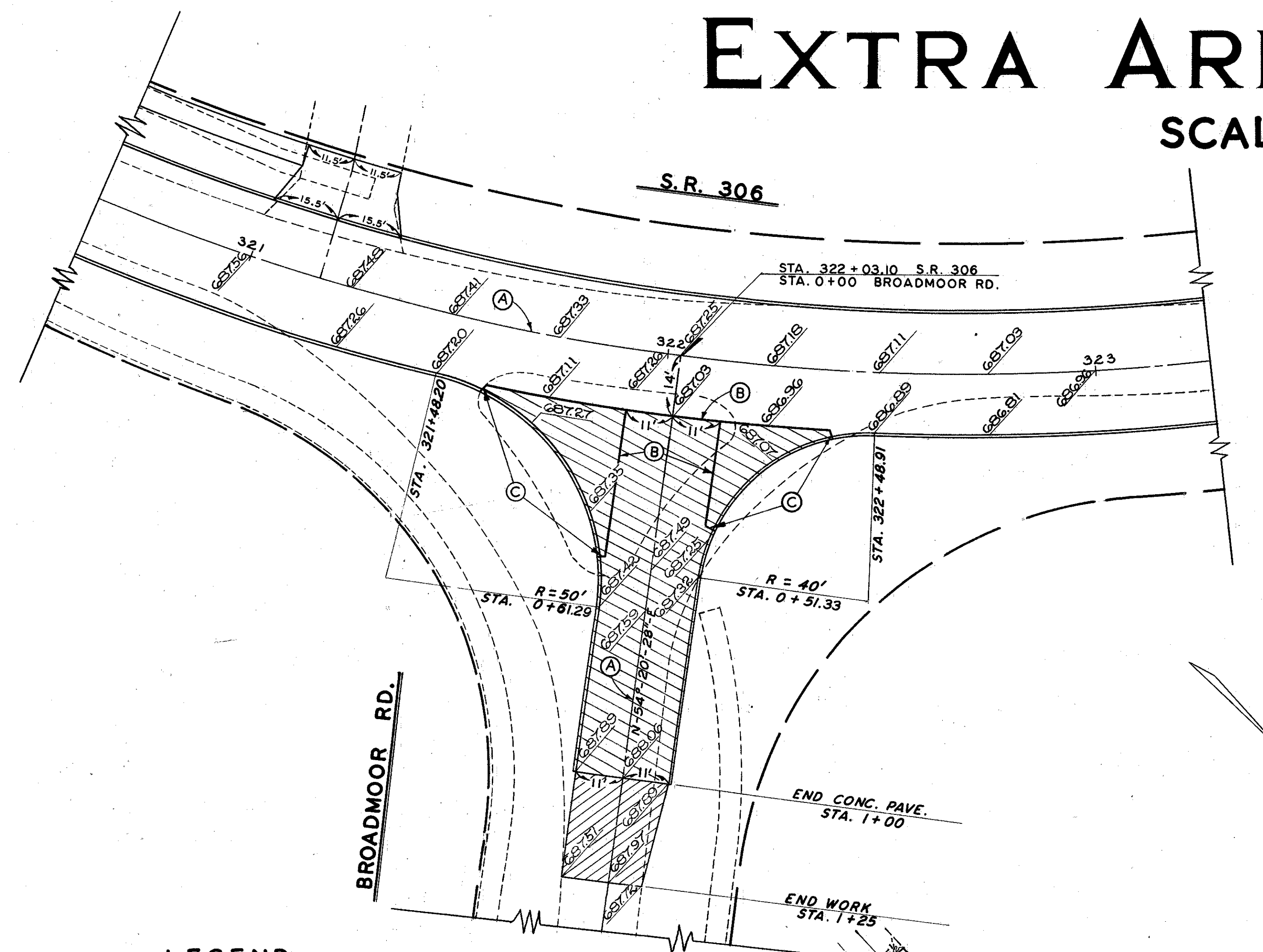


# EXTRA AREA DETAILS

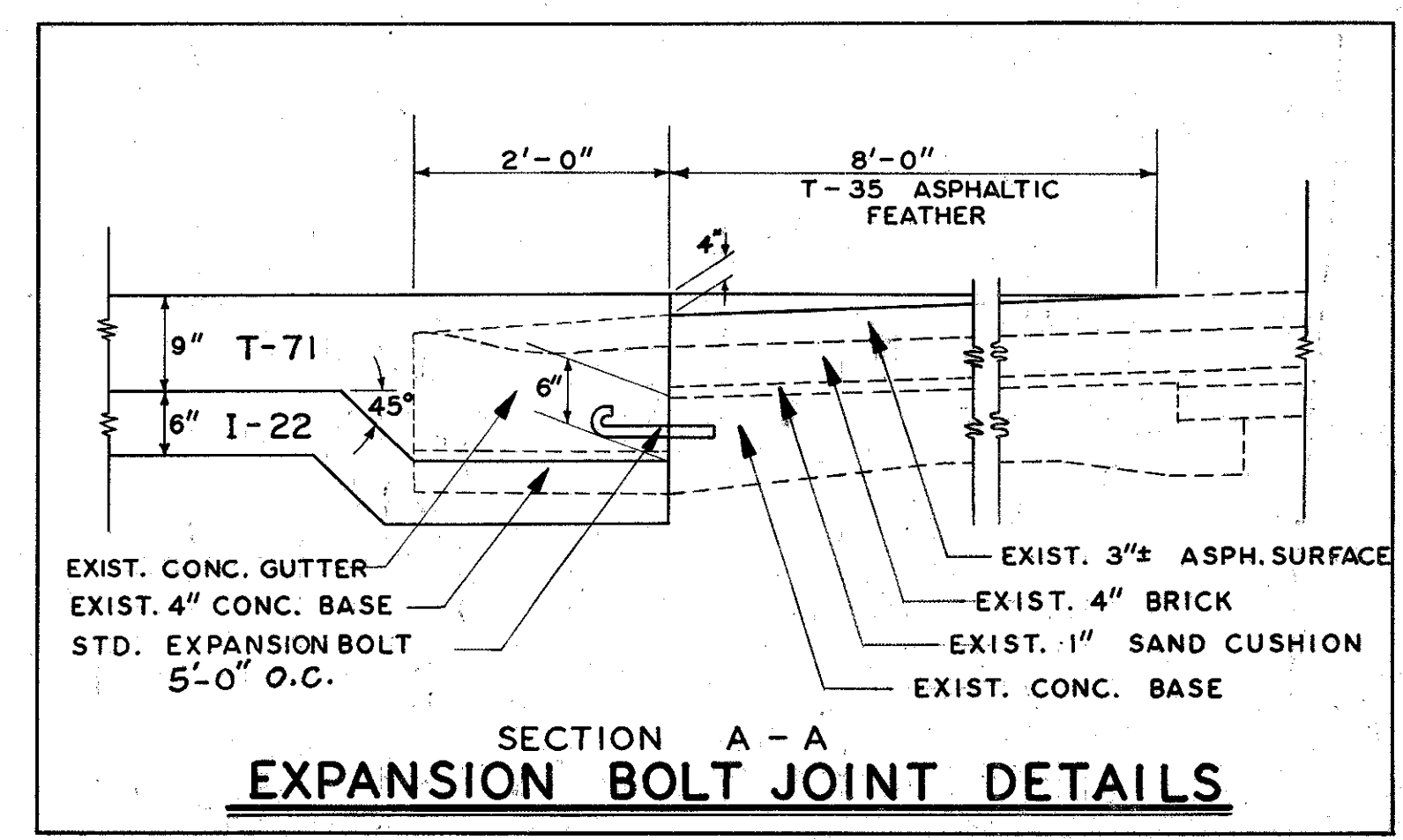
SCALE 1" = 20'



LOCATION		T-71	I-22	I-12	T-30	T-35	B-35	B-19	S-23	E-8	SPECIAL
STATION TO STATION	SIDE	REINFORCED PORTLAND CEMENT CONCRETE PAVEMENT	SUBBASE	STANDARD TYPE 2A CURB	BITUMINOUS PRIME COAT AT 0.4 GALS. PER SQ. YD.	1" ASPHALTIC CONCRETE SURFACE COURSE	1/2" ASPHALTIC CONCRETE LEVELING COURSE	4" AGGREGATE BASE COURSE	DOWEL HOLES	REM. & DISP. OF EXIST. CONC. GUTTER & BASE	STANDARD EXPANSION BOLTS
		SQ. YDS.	CU. YDS.	LIN. FT.	GALS.	CU. YDS.	CU. YDS.	CU. YDS.	EACH	LIN. FT.	EACH
321+48.20 - 322+48.91	R.	297	61	220	23	1.5	2	6			
6+54.90 - 8+66.81	L.	391	139	218							
6+54.90 - 8+66.81	R.	389	135	206							
8+66.81 - 9+89.98	L.	317	110	128		3			13	58	13
8+66.81 - 9+89.98	R.	300	105	131		4			12	52	12
<b>TOTAL :</b>		<b>1,694</b>	<b>550</b>	<b>903</b>	<b>23</b>	<b>8.5</b>	<b>2</b>	<b>6</b>	<b>25</b>	<b>110</b>	<b>25</b>

### LEGEND

- (A) STANDARD LONGITUDINAL JOINT.
- (B) STANDARD KEY JOINT WITHOUT TIE BARS.
- (C) 2" EXPANSION JOINT WITHOUT DOWELS. (LOCATED ON RADIAL LINES)
- (D) EXPANSION JOINT WITHOUT DOWELS.
- (Hatched) NEW REINFORCED PORTLAND CEMENT CONCRETE PAVEMENT.
- (Diagonal Hatched) NEW ASPHALTIC CONCRETE PAVEMENT (1" T-35, 1/2" B-35, 4" B-19, 4" I-22)
- (Cross-hatched) T-35 ASPHALT FEATHER.
- (E) STANDARD TRANSVERSE CONTRACTION OR CONSTRUCTION JOINTS.



CURVE DATA	
R = 397.20 T = 78.65 Δ = 22° 24' 00" L = 155.29 D = 14° 25' 30"	①
R = 447.46 T = 94.54 Δ = 22° 24' 00" L = 186.66 D = 12° 00' 00"	②
R = 557.73 T = 110.43 Δ = 22° 24' 00" L = 218.05 D = 10° 16' 23"	③

