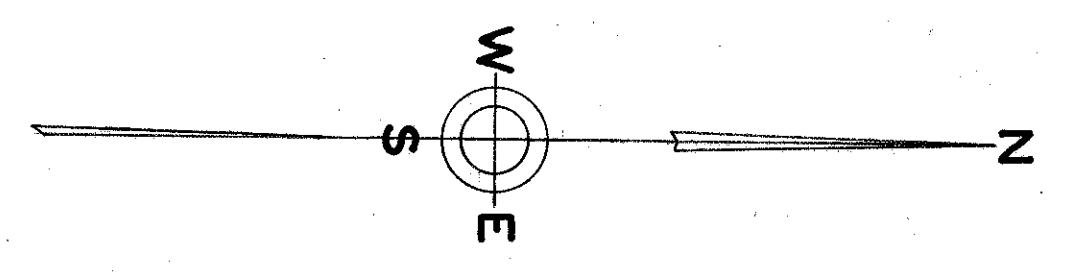
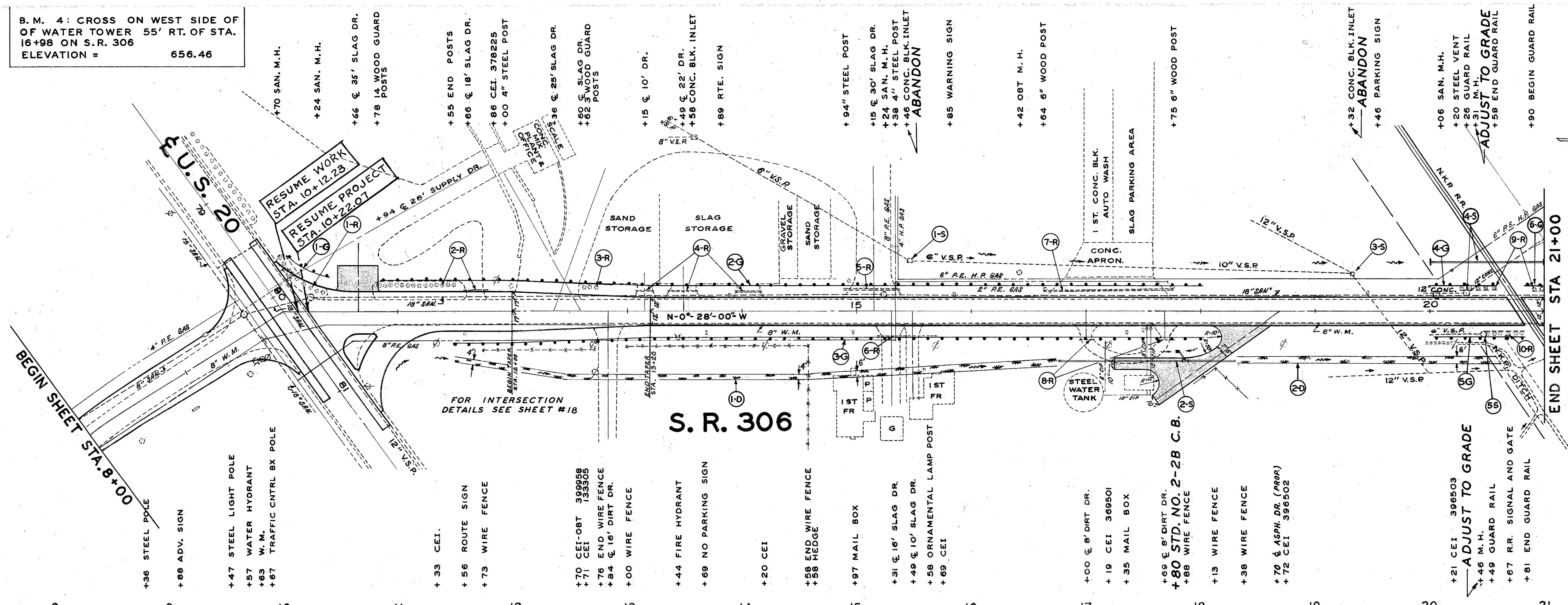
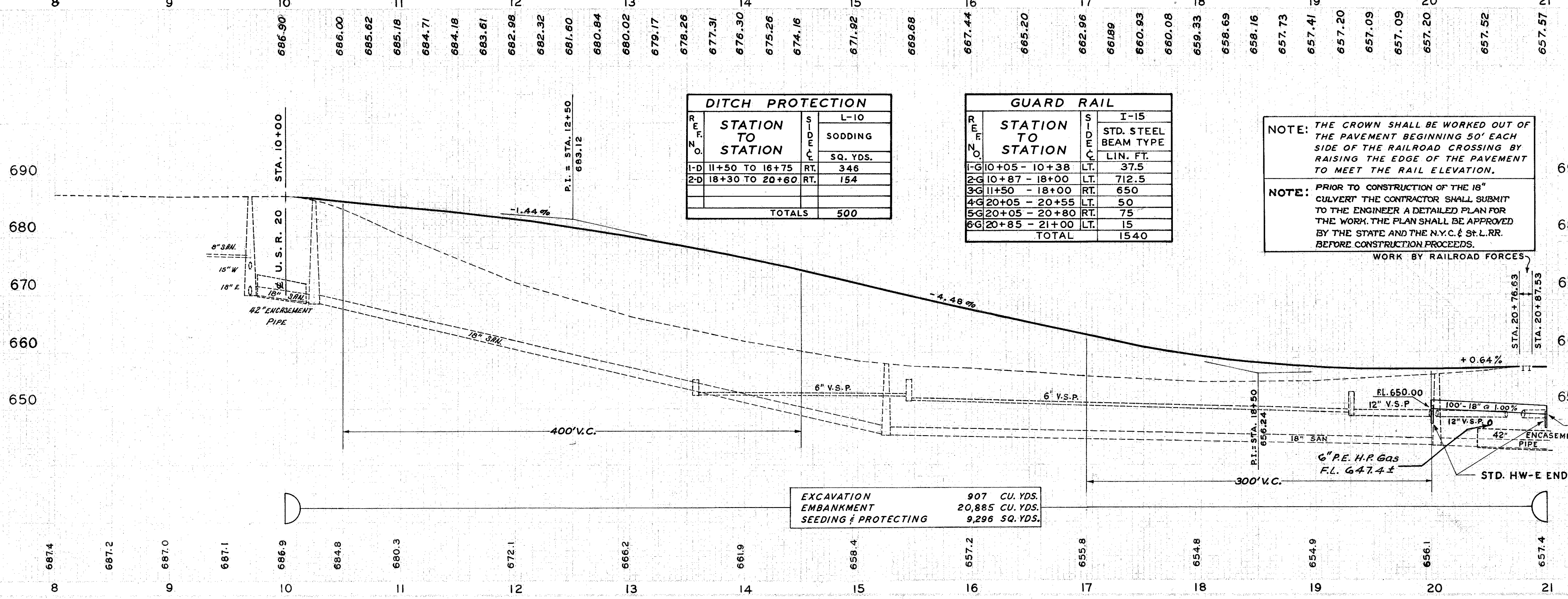


B.M. 4: CROSS ON WEST SIDE OF
OF WATER TOWER 55' RT. OF STA.
16+98 ON S.R. 306
ELEVATION = 656.46

LAKE COUNTY
LAK. 306-5.56



REF. NO.	STATION TO STATION	SIDE	REMOVALS	
			I-15	E-12
I-R 10+00 TO 10+35	10+35	LT.	9	19
I-R 10+78 TO 11+77	11+77	LT.	14	3
I-R 12+62 TO 12+74	12+74	LT.	3	65
I-R 13+08 TO 14+18	14+18	LT.	49	49
I-R 14+89 TO 15+38	15+38	LT.	53	113
I-R 16+61 TO 17+75	17+75	LT.	29	29
I-R 16+93 TO 17+78	17+78	RT.	41	
I-R 20+26 TO 21+00	21+00	LT.	51	
I-R 20+49 TO 21+00	21+00	LT.	92	328
TOTALS			26	328



DITCH PROTECTION		
STATION TO STATION	S	L-10 SODDING SQ. YDS.
1-D 11+50 TO 16+75	RT.	346
2-D 18+30 TO 20+80	RT.	154
TOTALS		500

GUARD RAIL		
STATION TO STATION	S	I-15 STD. STEEL BEAM TYPE LIN. FT.
1-G 10+05 - 10+38	LT.	37.5
2-G 10+87 - 18+00	LT.	712.5
3-G 11+50 - 18+00	RT.	650
4-G 20+05 - 20+55	LT.	50
5-G 20+05 - 20+80	RT.	75
6-G 20+85 - 21+00	LT.	15
TOTAL		1540

NOTE: THE CROWN SHALL BE WORKED OUT OF THE PAVEMENT BEGINNING 50' EACH SIDE OF THE RAILROAD CROSSING BY RAISING THE EDGE OF THE PAVEMENT TO MEET THE RAIL ELEVATION.

NOTE: PRIOR TO CONSTRUCTION OF THE 18" CULVERT THE CONTRACTOR SHALL SUBMIT TO THE ENGINEER A DETAILED PLAN FOR THE WORK. THE PLAN SHALL BE APPROVED BY THE STATE AND THE N.Y.C. & ST. L.R.R. BEFORE CONSTRUCTION PROCEEDS.

STATION TO STATION	SIDE	DRAINAGE	
		I-1	I-2
I-S 15+46	LT.	164	
I-S 16+70 TO 18+30	RT.	164	
I-S 19+32	LT.		
I-S 20+00 TO 21+00	LT.	100	0.60
I-S 20+46	RT.		
TOTALS		164	0.60

S.R. 306 PLAN & PROFILE STA. 8+00 TO STA. 21+00