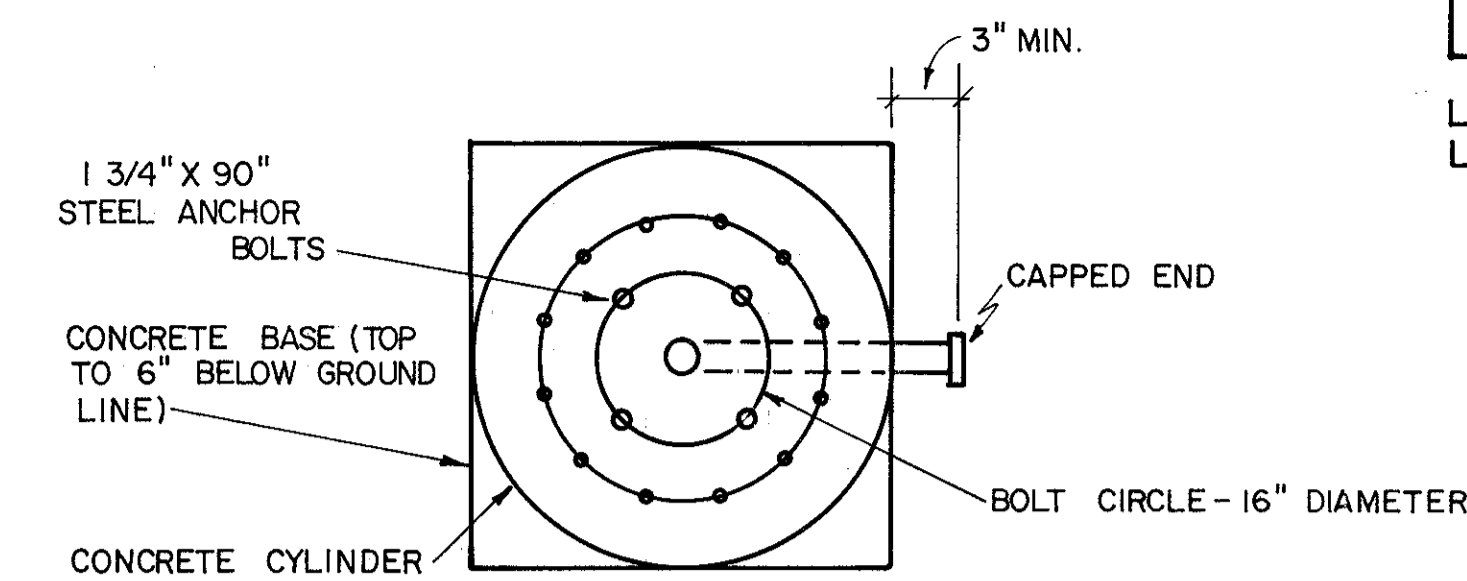


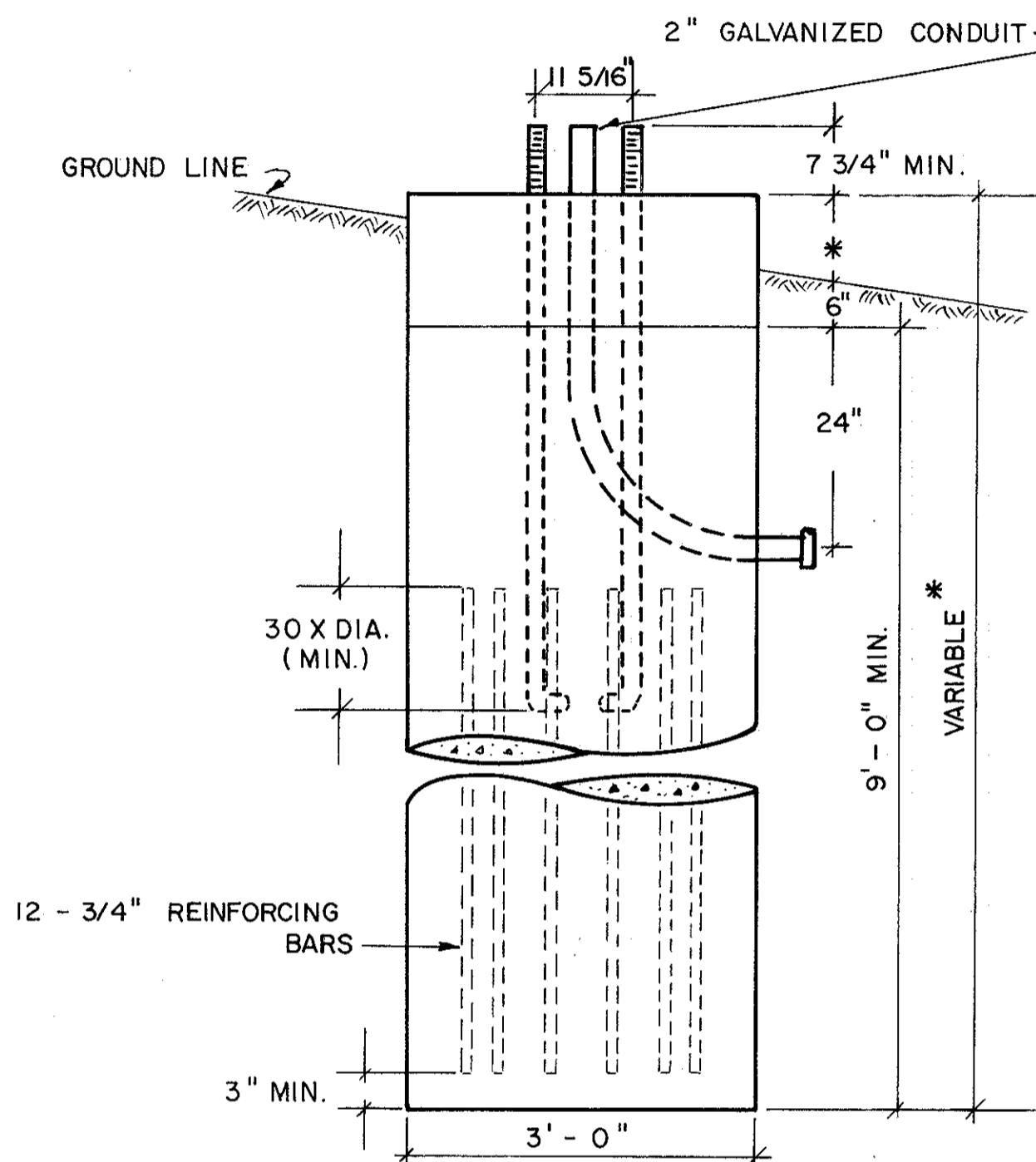
FED. RD. DIVISION	STATE	PROJECT	
5	OHIO		

62  
73

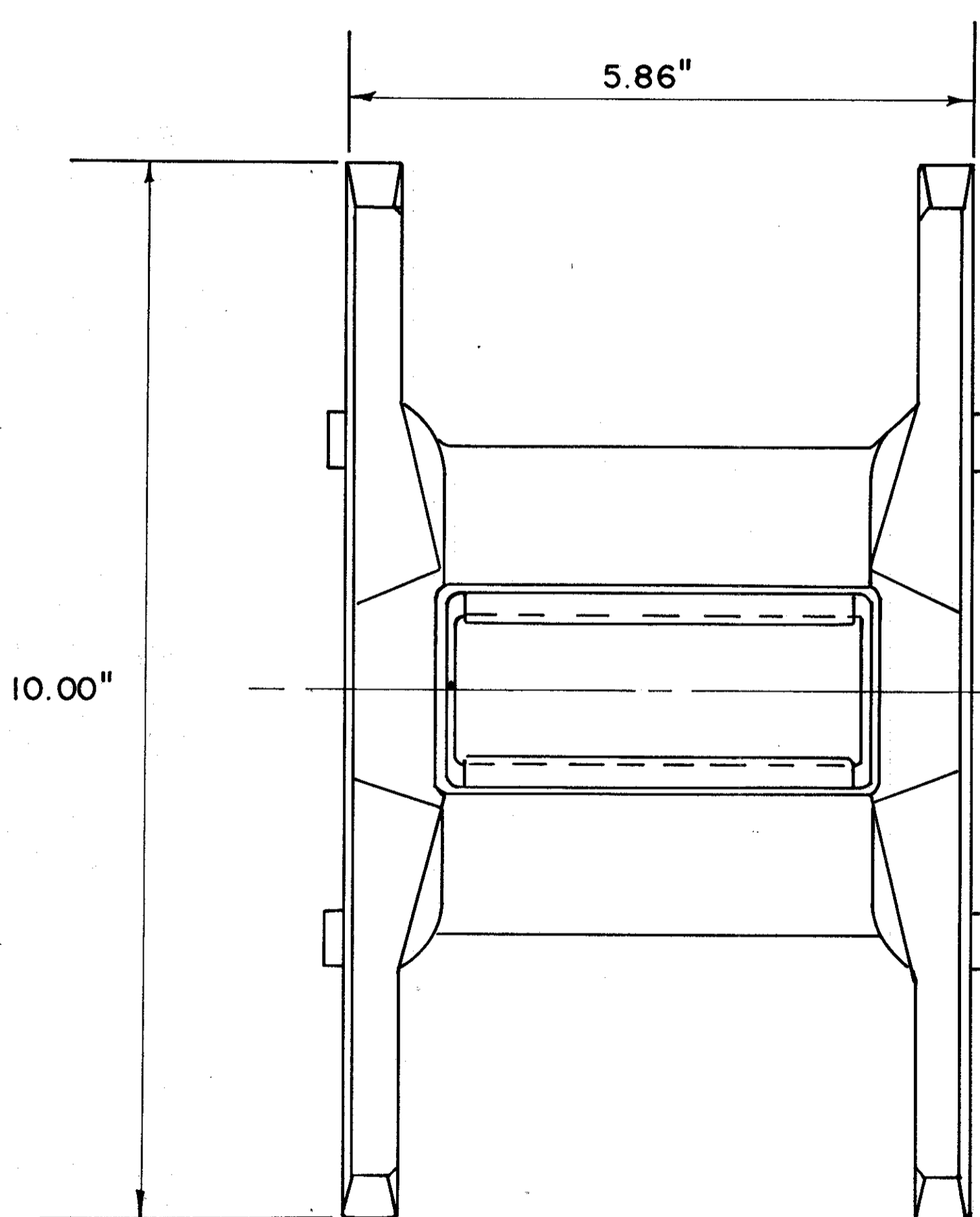
LAKE COUNTY  
LAK - 306 - 4.74



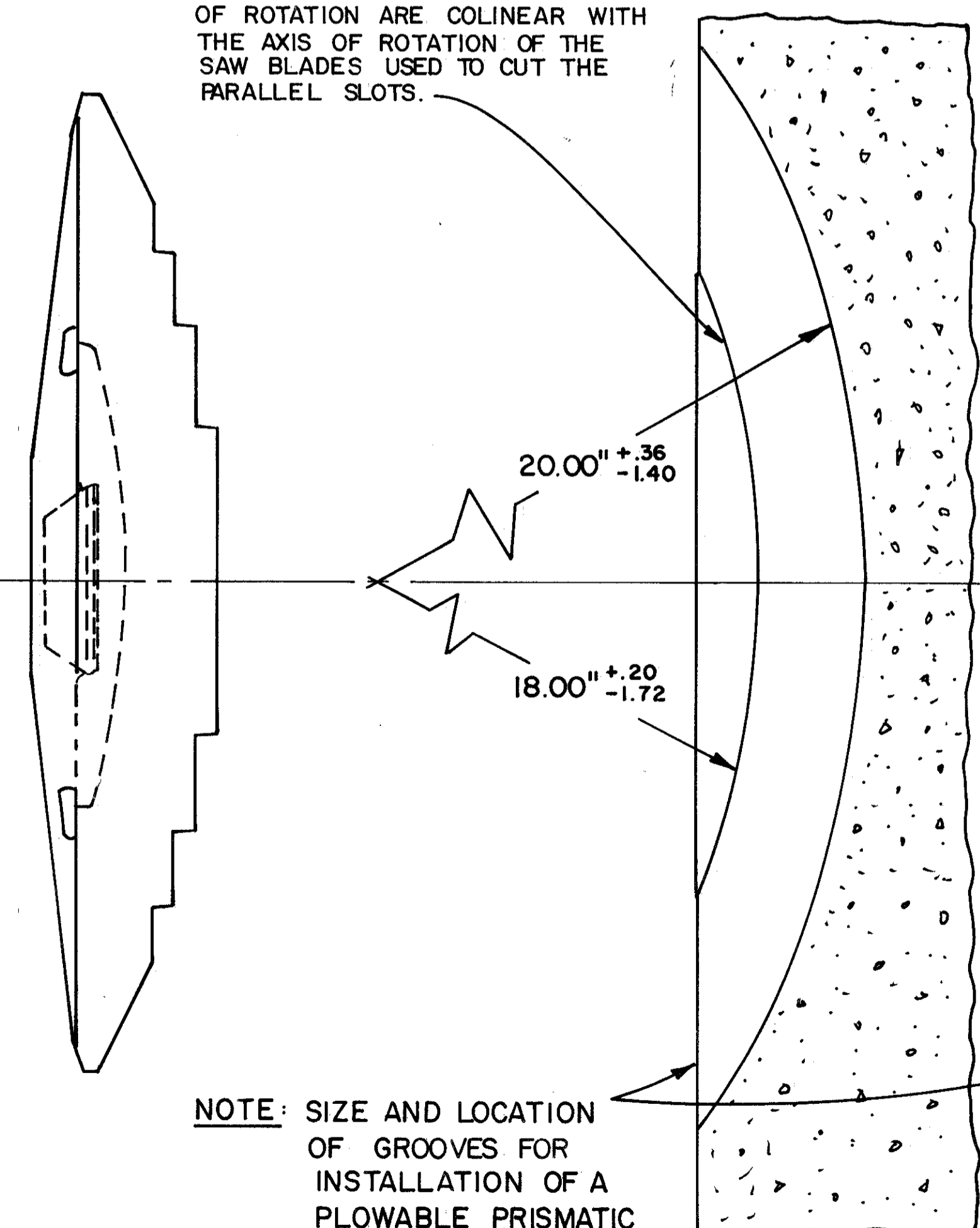
**NOTE:**  
\* THE TOP ELEVATION OF FOUNDATIONS SHALL BE VARIED SO AS TO MAINTAIN A MINIMUM CLEARANCE OF 17' BETWEEN THE BOTTOM OF THE SIGN AND THE HIGHWAY.



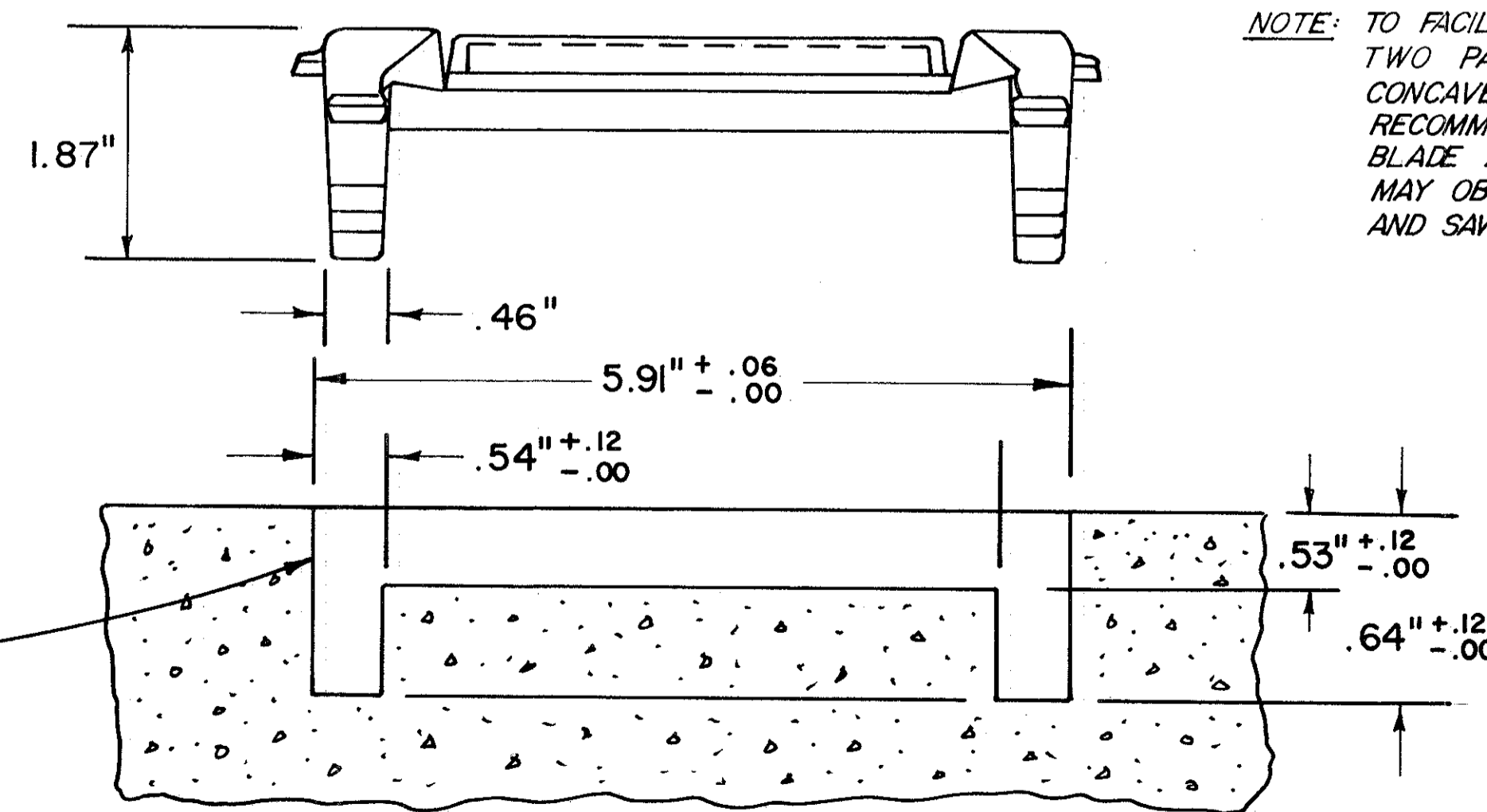
**FOUNDATION DETAIL FOR REERECTION OF EXISTING OVERHEAD SIGN (STA. 265+50)**



THE CONCAVE SURFACE SHALL BE CUT WITH SAW BLADES WHOSE AXES OF ROTATION ARE COLINEAR WITH THE AXIS OF ROTATION OF THE SAW BLADES USED TO CUT THE PARALLEL SLOTS.



**NOTE:** SIZE AND LOCATION OF GROOVES FOR INSTALLATION OF A PLOWABLE PRISMATIC RAISED PAVEMENT MARKER.



**NOTE:** TO FACILITATE THE CUTTING OF THE TWO PARALLEL SLOTS AND INTERVENING CONCAVE SURFACE SIMULTANEOUSLY, IT IS RECOMMENDED THAT AN ARBOR AND SAW BLADE ASSEMBLY BE USED. THE CONTRACTOR MAY OBTAIN A DETAIL OF A TYPICAL ARBOR AND SAW BLADES ASSEMBLY AT THE:

BUREAU OF TRAFFIC  
25 SOUTH FRONT STREET  
COLUMBUS, OHIO

**PLOWABLE PRISMATIC RAISED PAVEMENT MARKER CASTING AND PAVEMENT DETAIL**

COLPETZER WOODS CONSULTANTS INC. MENTOR, OHIO					
<b>STATE OF OHIO</b> DEPARTMENT OF TRANSPORTATION					
DESIGNED	DRAWN	TRACED	CHECKED	REVIEW DATE	REVISED