

LAKE COUNTY  
LAK-306-4.74

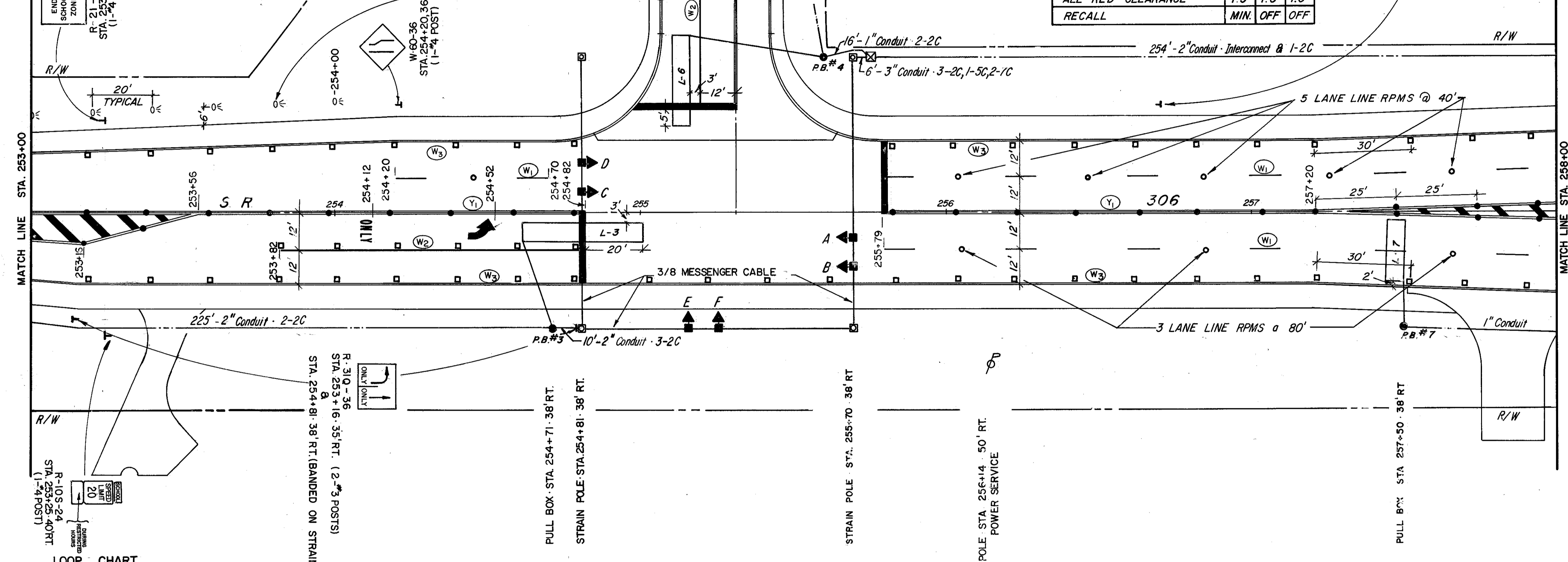
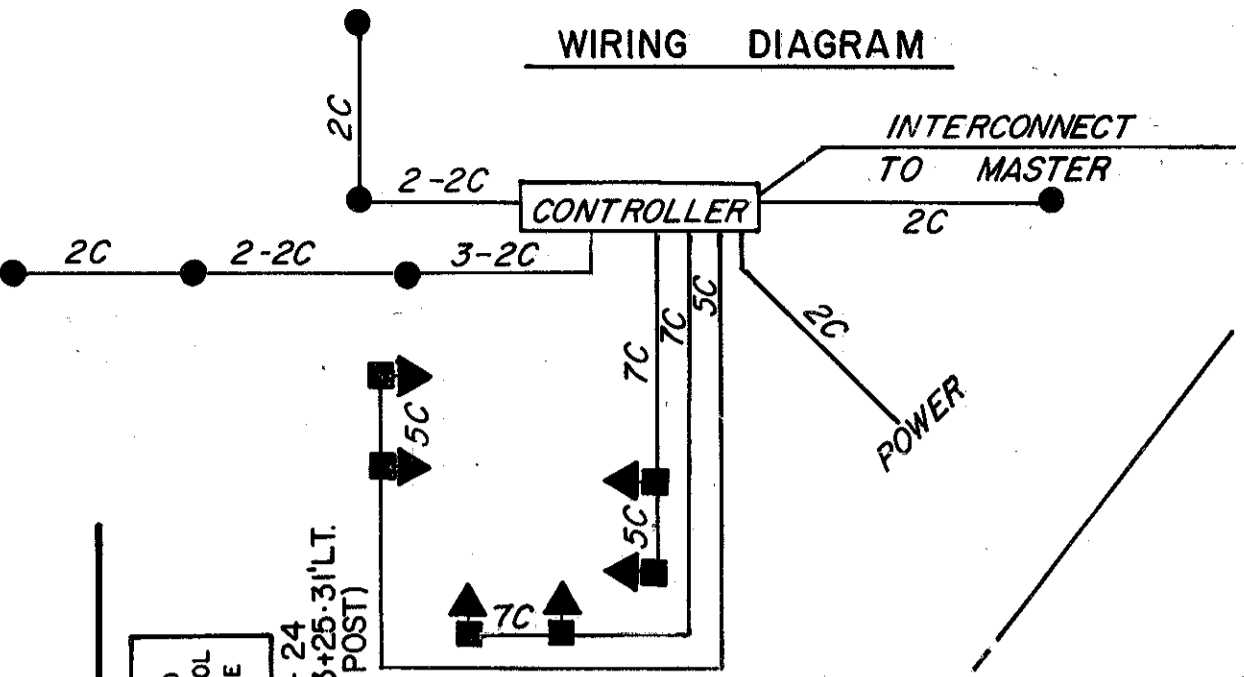
QUANTITY CALCULATIONS  
BY: JE DATE: 2/25/01  
CHECKED: DA DATE: 3/19/01  
COLPETZER WOODS CONSULTANTS

**TIMING CHART**

FUNCTION	Ø1	Ø2	Ø3
INITIAL GREEN	-	8.0	7.0
MINIMUM INITIAL	15	-	-
Nº OF ACTUATIONS TO GIVE MAXIMUM INITIAL	10	-	-
MAXIMUM INITIAL	25	-	-
MAXIMUM GAP	5.0	-	-
TIME WAITING TO REDUCE TO MINIMUM GAP	26	-	-
MINIMUM GAP	3.0	-	-
LAST VEHICLE PASSAGE	5.0	-	-
GREEN EXTENSION	-	4.0	2.0
MAXIMUM GREEN	50	35	20
YELLOW CLEARANCE	3.0	3.0	3.0
ALL RED CLEARANCE	1.5	1.0	1.0
RECALL	MIN.	OFF	OFF

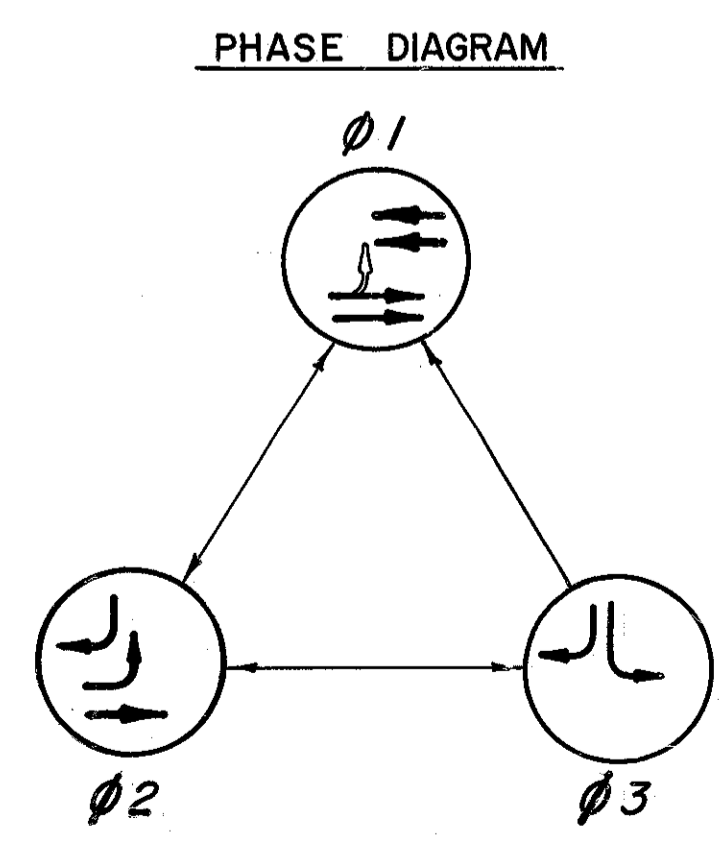
**NOTE:** EXISTING UNDERGROUND UTILITIES ARE NOT SHOWN. SEE CONSTRUCTION PLANS. CONTRACTOR IS FULLY RESPONSIBLE FOR ALL DAMAGE INFLICTED ON UNDERGROUND UTILITIES.

**NOTE:** EDGELINE, CHANNELIZING LINE, AND CENTERLINE RAISED PAVEMENT MARKERS ARE AT 20' SPACING UNLESS OTHERWISE NOTED. LANE LINE RAISED PAVEMENT MARKERS ARE AT 80' SPACING UNLESS OTHERWISE NOTED.

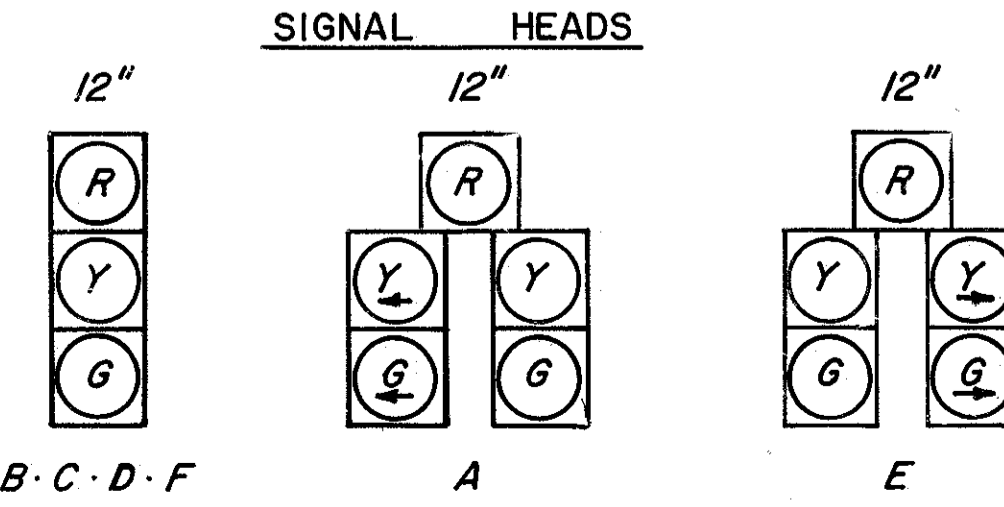
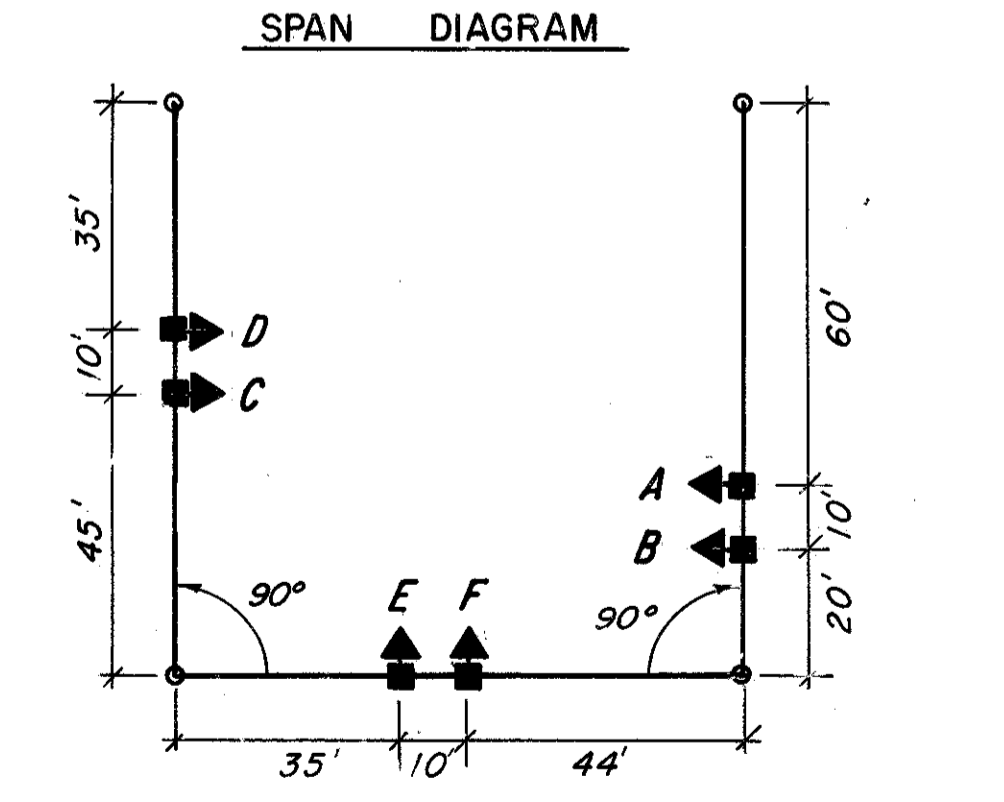


**LOOP CHART**

LOOP	SIZE	MODE	SPECIAL FUNCTIONS
1	6 x 11		SYSTEM'S VOLUME
2	6 x 11		
3	6 x 40	DELAY 5SEC.	
4	6 x 20		
5	6 x 8		
6	6 x 30	DELAY 2SEC.	



- PAVEMENT MARKING LEGEND**
- 24" BROAD TRANSVERSE LINES
  - (W1) 4" WHITE LANE LINE (10' LONG W/30' GAPS)
  - (W2) 8" WHITE CHANNELIZING LINE
  - 24" STOP LINE
  - (Y1) 4" DOUBLE YELLOW CENTERLINE (4" APART)
  - (W3) 4" WHITE EDGE LINE
  - LANE ARROWS
  - 2 WAY RAISED MARKER - YELLOW/YELLOW
  - 2 WAY RAISED MARKER - WHITE/RED (WHITE SIDE SHALL FACE TRAFFIC)
  - 1 WAY RAISED MARKER - WHITE



**DISPLAY CHART**

FLASH	SIGNAL HEAD	Ø1	Ø2	Ø3
Y	A	G	G	G
-	A	-	-	-
Y	B	G	G	G
Y	C-D	G	Y	R
-	E	-	-	-
R	E-F	R	R	R

COLPETZER WOODS CONSULTANTS INC.  
MENTOR, OHIO

**STATE OF OHIO**  
DEPARTMENT OF TRANSPORTATION

DESIGNED	DRAWN	TRACED	CHECKED	REVIEW DATE	REVISED