

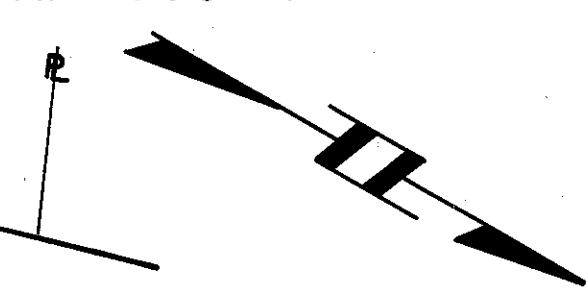
FED. RD. DIVISION	STATE	PROJECT	23 73
5	OHIO		

LAKE COUNTY
LAK-306-4.74

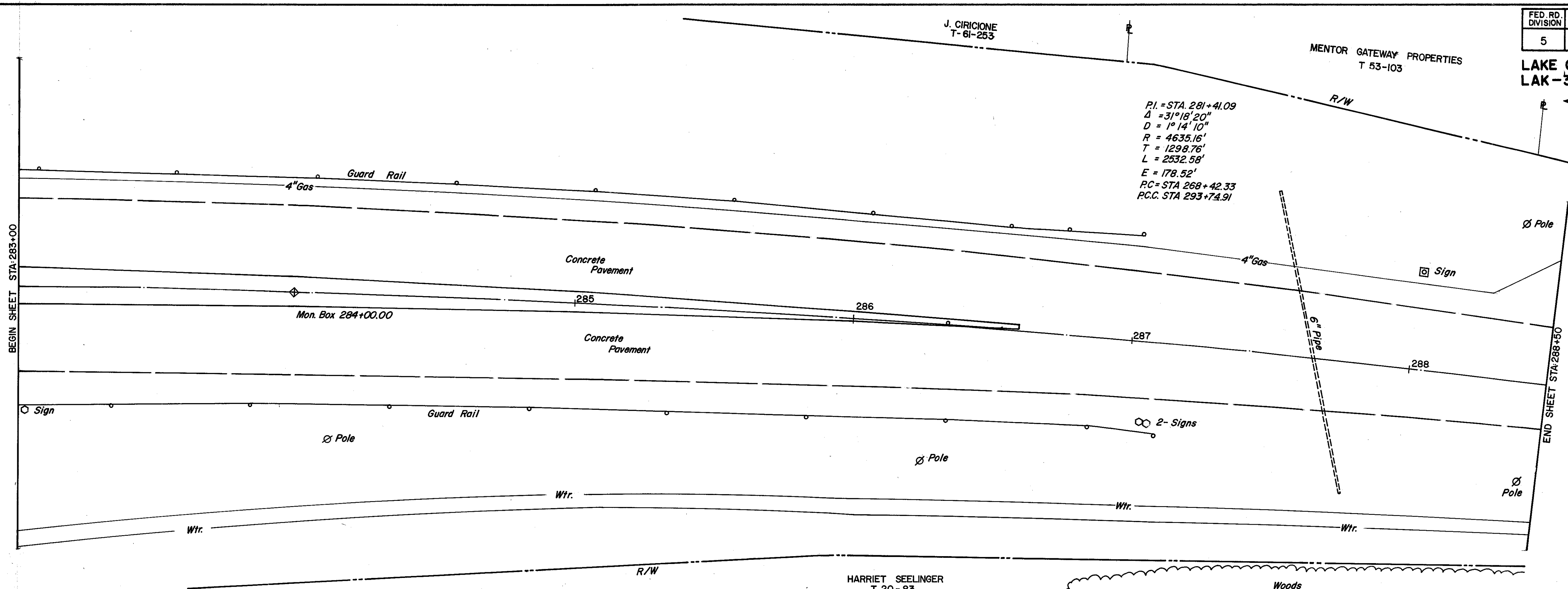
MENTOR GATEWAY PROPERTIES
T 53-103

J. CIRICIONE
T-61-253

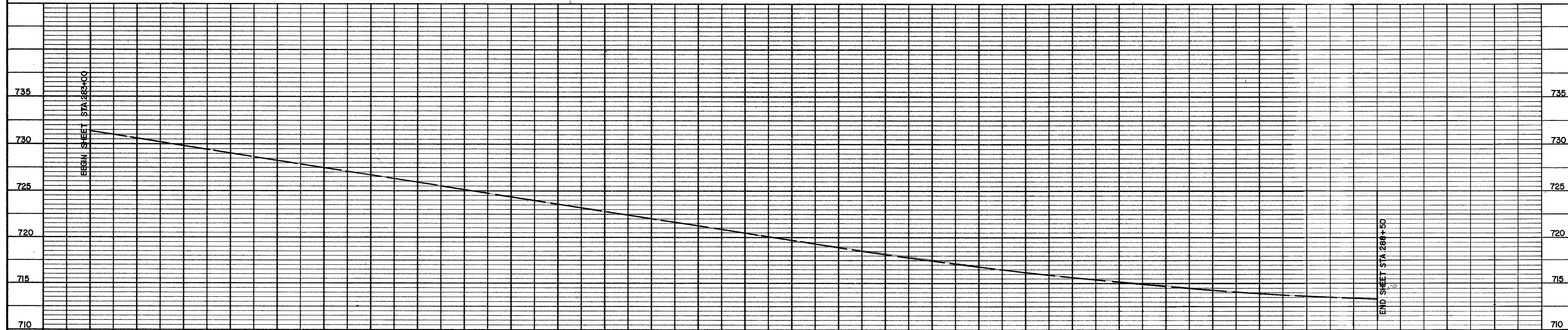
$P.I. = STA. 281+41.09$
 $\Delta = 31^{\circ}18'20''$
 $D = 1^{\circ}14'10''$
 $R = 4635.16'$
 $T = 1298.76'$
 $L = 2532.58'$
 $E = 178.52'$
 $PC = STA 268+42.33$
 $P.C.C. STA 293+74.91$



DATE	
BY	
REVISION	
NO.	
PLAN	
NOTE BOOK	
NO.	



DATE	
BY	
REVISION	
NO.	
PROFILE	
NOTE BOOK	
NO.	



COLPETZER WOODS CONSULTANTS INC.
MENTOR, OHIO

STATE OF OHIO
DEPARTMENT OF TRANSPORTATION

DESIGNED	DRAWN	TRACED	CHECKED	REVIEW DATE	REVISED

STATE ROUTE 306