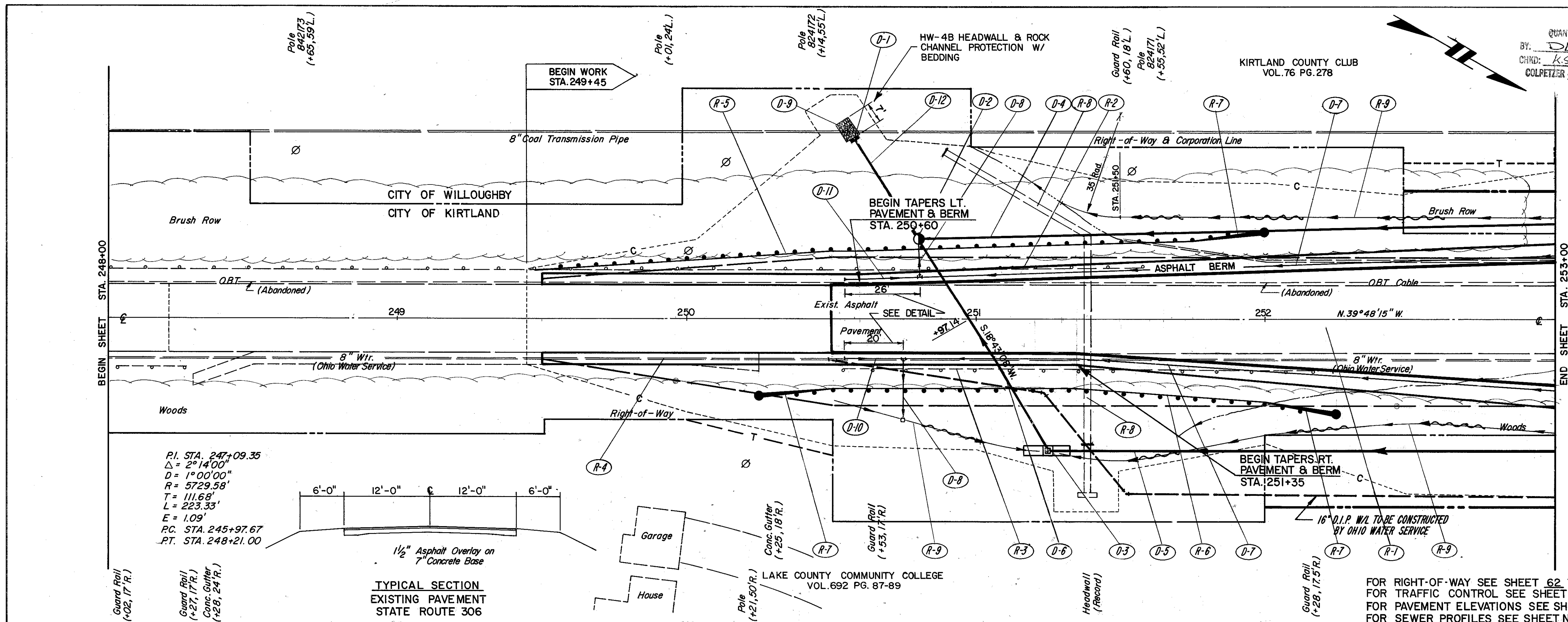


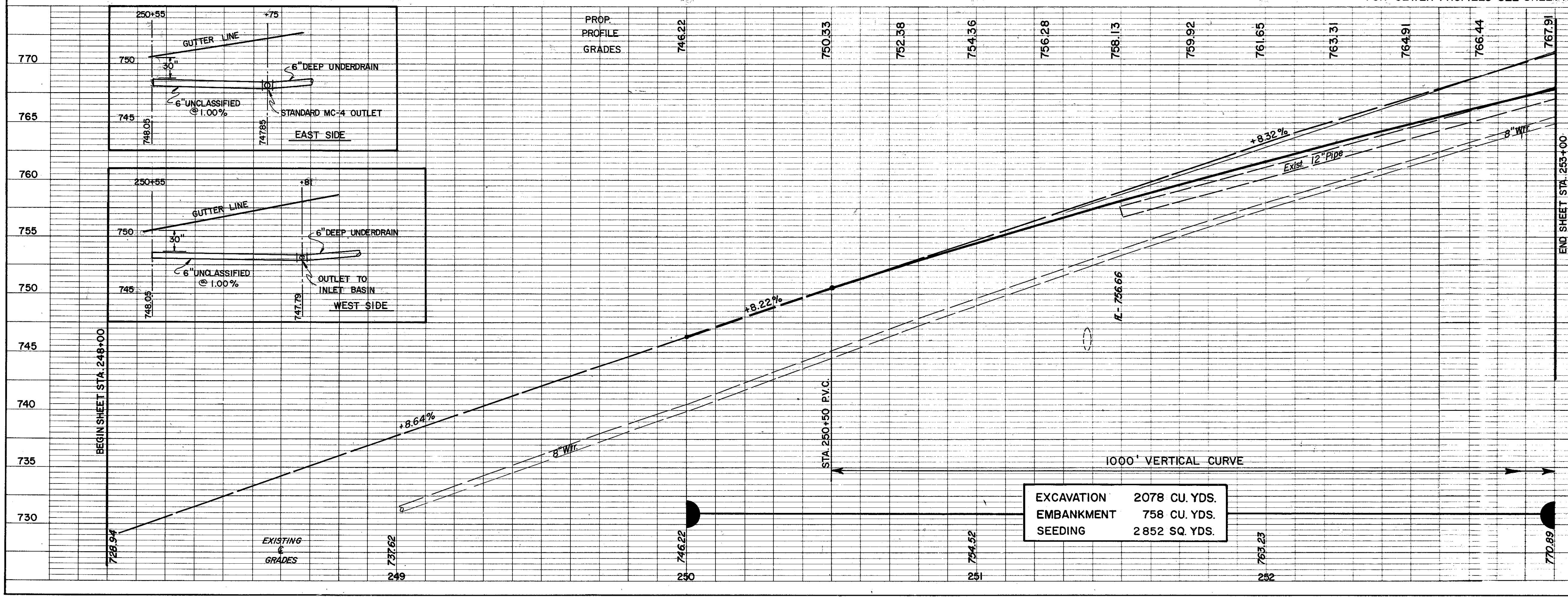
DATE	
BY	
REVISION	
NO.	

DATE	
BY	
REVISION	
NO.	



FED. RD. DIVISION	5	STATE	OHIO	PROJECT	LAKE COUNTY LAK-306-4.74	FISCAL YEAR	16
BY	DA	DATE	10/30/14	CHKD:	K.S.	DATE	10/30/14
COLPETZER WOODS CONSULTANTS							

ITEM	QTY	UNIT	PRICE	TOTAL
6" DEEP PIPE UNDERDRAIN	490	L.F.		490
6" UNCLASSIFIED PIPE UNDERDRAIN	20	L.F.		20
ROCK CHANNEL PROT. TYPE-C W/BEDDING	26	CY		26
6" CONDUIT "TYPE-F"	33	L.F.		33
21" CONDUIT "TYPE-C"	42	L.F.		42
15" CONDUIT "TYPE-B"	86	L.F.		86
15" CONDUIT "TYPE-C"	390	L.F.		390
No. 5 CATCH BASIN W/ "B" GRATE	1	EA.		1
No. 3 MANHOLE	1	EA.		1
CONCRETE MASONRY	0.37	CY		0.37
TOTALS				



REF.	LOCATION	QTY	UNIT	PRICE	TOTAL
D-1	250+58.07 to 63.82 L.				
D-2	250+80.28 L.				
D-3	251+25.45 to 55.5 R.				
D-4	250+80 to 253+00 L.				
D-5	251+25 to 253+00 R.				
D-6	250+80 L. to 251+25 R.				
D-7	250+55 to 253+00 L. & R.				
D-8	250+75 R. to 250+81 L.				
D-9	250+50.07 L.				
D-10	250+55 to 250+75 R.				
D-11	250+55 to 250+81 L.				
D-12	250+58.07 to 250+80 L.				
TOTALS					

ITEM	QTY	UNIT	PRICE	TOTAL
ANCHOR ASSEMBLY TYPE "A"	3	EA.		3
GUARDRAIL, TYPE 5	375	L.F.		375
FILL & PLUG EXISTING - CULVERT	225	CY		225
CONCRETE GUTTER REMOVED	150	L.F.		150
GUARDRAIL REMOVED	307.5	L.F.		307.5
PAVEMENT REMOVED	667	S.Y.		667
SODDING	281	SQ.		281
TOTALS				

REF.	LOCATION	QTY	UNIT	PRICE	TOTAL
R-1	250+50 to 253+00				
R-2	249+47.50 to 251+80 L.				
R-3	250+53 to 252+28 R.				
R-4	249+50 to 250+25 R.				
R-5	249+47.50 to 251+72.5 L.				
R-6	250+50 to 252+00 R.				
R-7	250+25 L., 250+25 R., 252+25 R.				
R-8	251+38 L. & R.				
R-9	251+30 to 253+00 L. & R.				
TOTALS					

COLPETZER WOODS CONSULTANTS INC.
MENTOR, OHIO

STATE OF OHIO
DEPARTMENT OF TRANSPORTATION

DESIGNED	DRAWN	TRACED	CHECKED	REVIEW DATE	REVISED