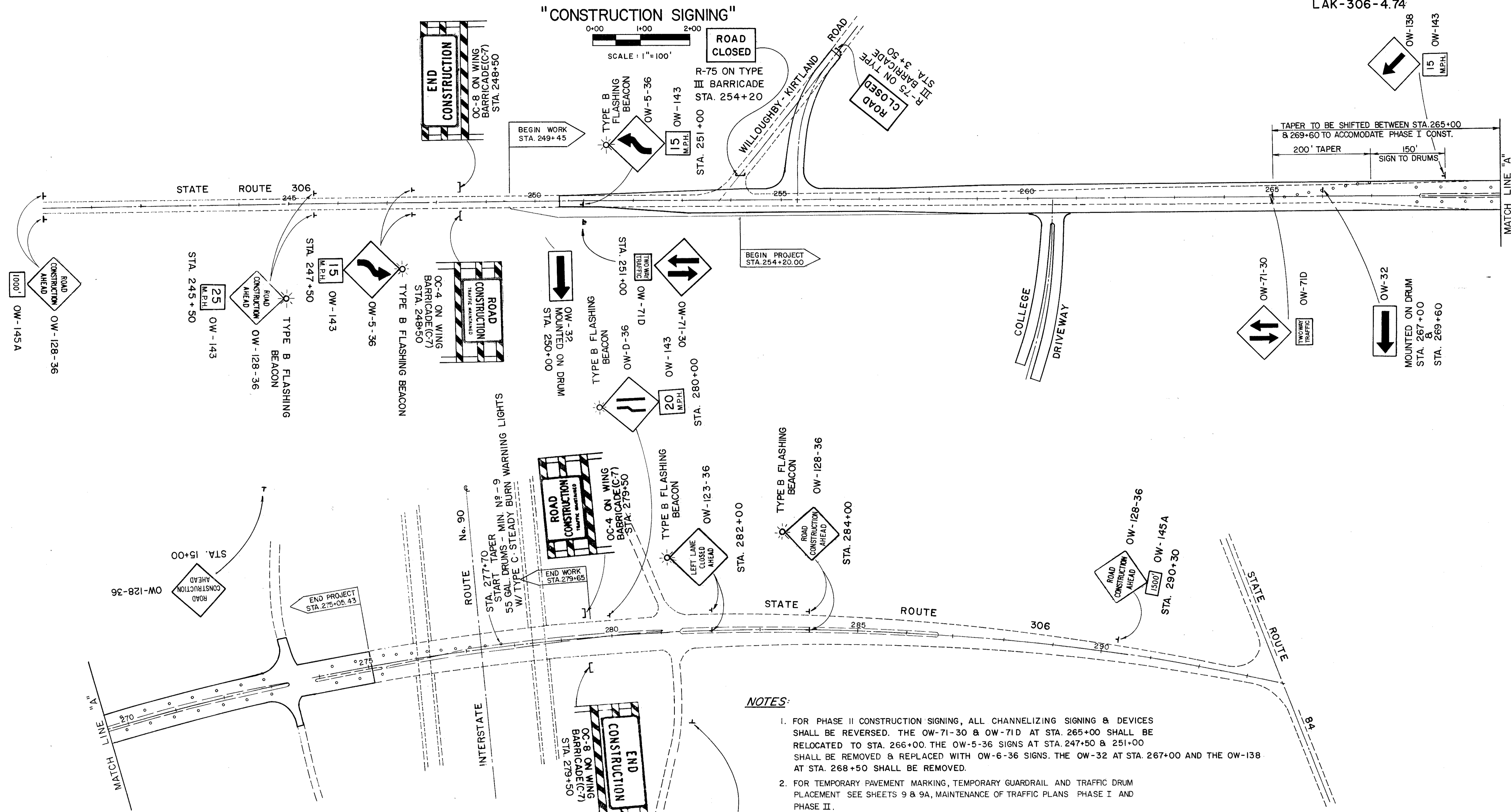


MAINTENANCE OF TRAFFIC

FED. RD. DIVISION	STATE	PROJECT
5	OHIO	
11		73

LAKE COUNTY
LAK-306-4.74



- NOTES:**
- 1. FOR PHASE II CONSTRUCTION SIGNING, ALL CHANNELIZING SIGNING & DEVICES SHALL BE REVERSED. THE OW-71-30 & OW-71D AT STA. 266+00 SHALL BE RELOCATED TO STA. 266+00. THE OW-5-36 SIGNS AT STA. 247+50 & 251+00 SHALL BE REMOVED & REPLACED WITH OW-6-36 SIGNS. THE OW-32 AT STA. 267+00 AND THE OW-138 AT STA. 268+50 SHALL BE REMOVED.
 - 2. FOR TEMPORARY PAVEMENT MARKING, TEMPORARY GUARDRAIL AND TRAFFIC DRUM PLACEMENT SEE SHEETS 9 & 9A, MAINTENANCE OF TRAFFIC PLANS PHASE I AND PHASE II.
 - 3. THE TRAFFIC SIGNAL AT S.R. 306 & RAMPS "C" & "D" SHALL BE OPERATED AS A FIXED TIME SIGNAL DURING CONSTRUCTION. CHANGING THE OPERATION OF ANY SIGNALS SHALL BE DONE BY THE GOVERNING AGENCY ONLY.
 - 4. ALL SIGNING, STRIPING & TRAFFIC CONTROL DEVICES SHALL CONFORM TO THE SPECIFICATIONS SET FORTH IN THE OHIO MANUAL OF UNIFORM TRAFFIC CONTROL DEVICES, PART 7 - CONSTRUCTION & MAINTENANCE OPERATIONS.

COLPETZER WOODS CONSULTANTS INC. MENTOR, OHIO					
STATE OF OHIO DEPARTMENT OF TRANSPORTATION					
DESIGNED	DRAWN	TRACED	CHECKED	REVIEW DATE	REVISED

STATE ROUTE 306