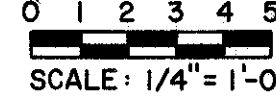


TYPICAL SECTIONS

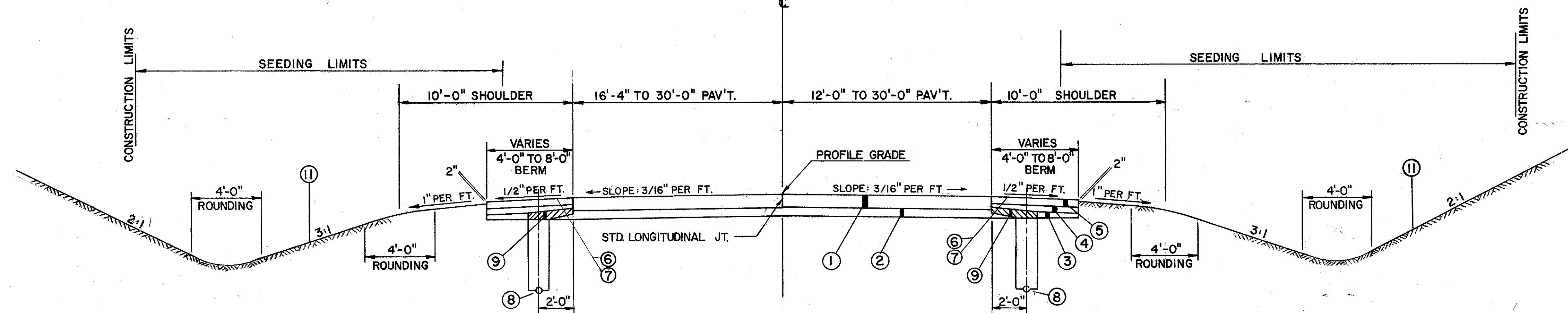
TYPE 451



FED. RD. DIVISION	STATE	PROJECT
5	OHIO	

3
73

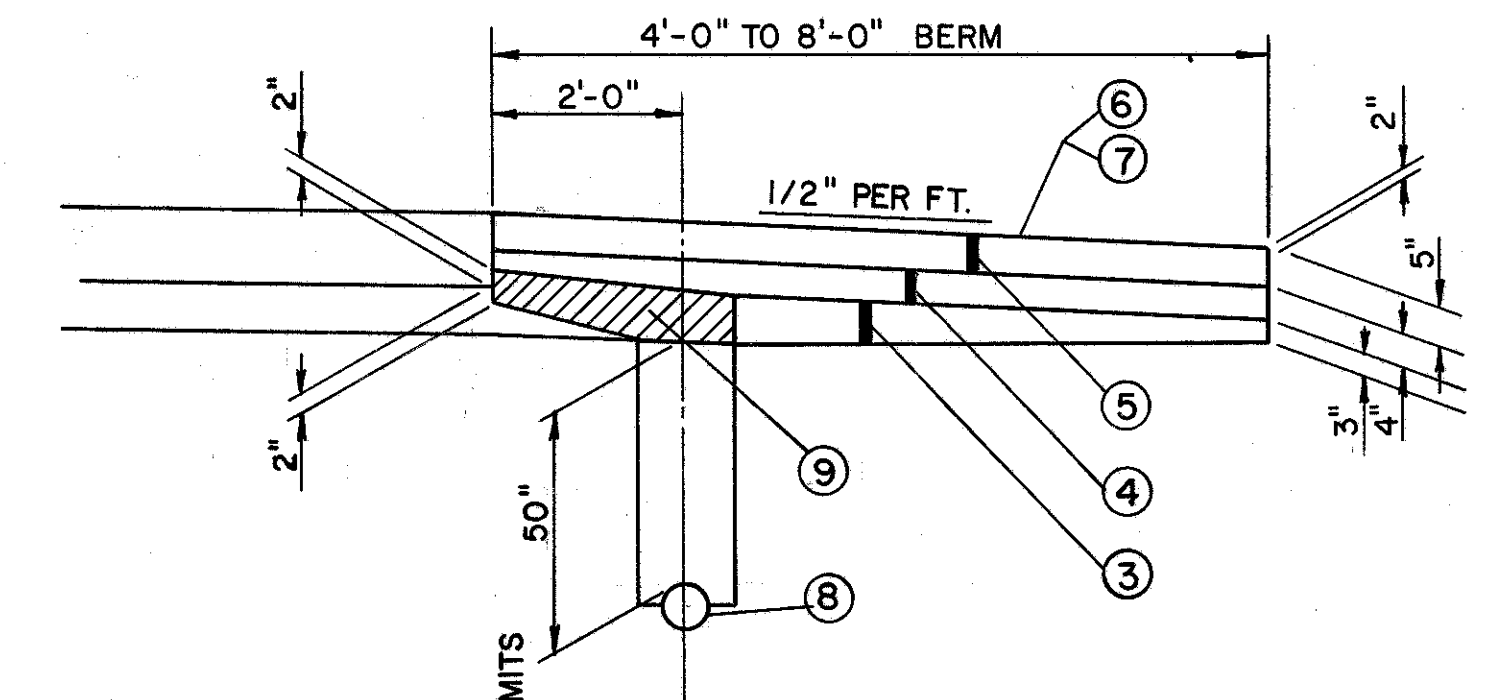
LAKE COUNTY
LAK-306-4.74



TYPICAL SECTION "B"

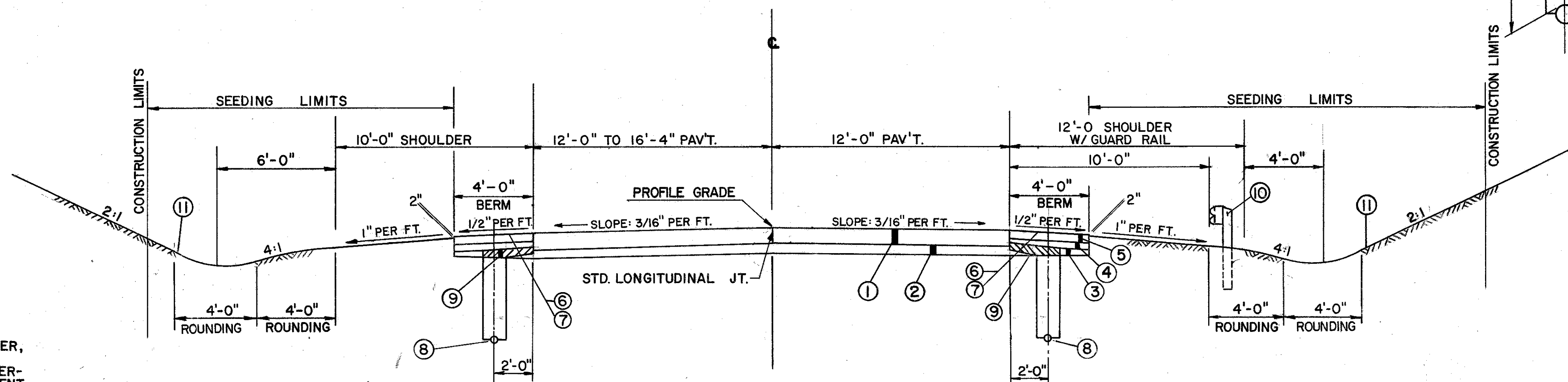
LIMITING STATIONS
STA. 251+80 TO STA. 259+00 = 720 LF

- LEGEND**
- ① 451 9" REINFORCED PORTLAND CEMENT CONCRETE PAVEMENT
 - ② 310 6" SUBBASE, TYPE II
 - ③ 310 SUBBASE (VARIABLE DEPTH), TYPE II
 - ④ 304 AGGREGATE BASE
 - ⑤ 301 BITUMINOUS AGGREGATE BASE; AC 20, RT-11 OR RT-12
 - ⑥ 409 SEAL COAT BITUMINOUS MATERIAL AT 0.30 GAL./SQ. YD.
 - ⑦ 409 SEAL COAT COVER AGGREGATE, No. 8 AT 0.008 CU. YD./SQ. YD.
 - ⑧ 605 6" DEEP PIPE UNDERDRAIN
 - ⑨ SPECIAL DRAINAGE CONNECTION, USING No. 8 AGGREGATE (See note in proposal)
 - ⑩ 606 GUARD RAIL TYPE-5
 - ⑪ 659 SEEDING AND MULCHING (See General Note)



NOTES:

1. CROSS SECTIONS SHALL GOVERN OVER TYPICAL SECTIONS WHERE VARIABLE CONDITIONS ARE ENCOUNTERED IN SLOPES, CUT AND FILL SECTIONS ARE INTERCHANGEABLE WITH EITHER SIDE OF THE ROADWAY.
2. TYPICAL SECTIONS ARE INTENDED TO SHOW THE GENERAL ROADWAY AND PAVEMENT FEATURES ONLY. FOR FURTHER DETAILS SEE REMAINING TYPICALS, EXTRA AREA DETAILS, PLAN AND PROFILES, AND CROSS SECTION SHEETS.
3. SEQUENCE OF OPERATION
 - (1) INSTALL PIPE UNDERDRAIN ON OUTSIDE SHOULDER, WHERE REQUIRED.
 - (2) PLACE SUBBASE OUT TO OUTSIDE EDGE OF UNDERDRAIN OR TO ONE FOOT BEYOND EDGE OF PAVEMENT WHERE NO UNDERDRAIN IS PRESENT. PAYMENT SHALL BE MADE FOR ALL SUBBASE PLACED IN THIS OPERATION.
 - (3) CONSTRUCT PAVEMENT.
 - (4) REMOVE SUBBASE AND ANY CONTAMINATED BACKFILL OVER DRAIN AND REPLACE WITH No. 8 AGGREGATE AS SHOWN.
 - (5) COMPLETE SHOULDER CONSTRUCTION.



TYPICAL SECTION "A"

LIMITING STATIONS
STA. 250+50 TO STA. 251+80 = 130 LF

COLPETZER WOODS CONSULTANTS INC. MENTOR, OHIO					
STATE OF OHIO DEPARTMENT OF TRANSPORTATION					
DESIGNED	DRAWN	TRACED	CHECKED	REVIEW DATE	REVISE