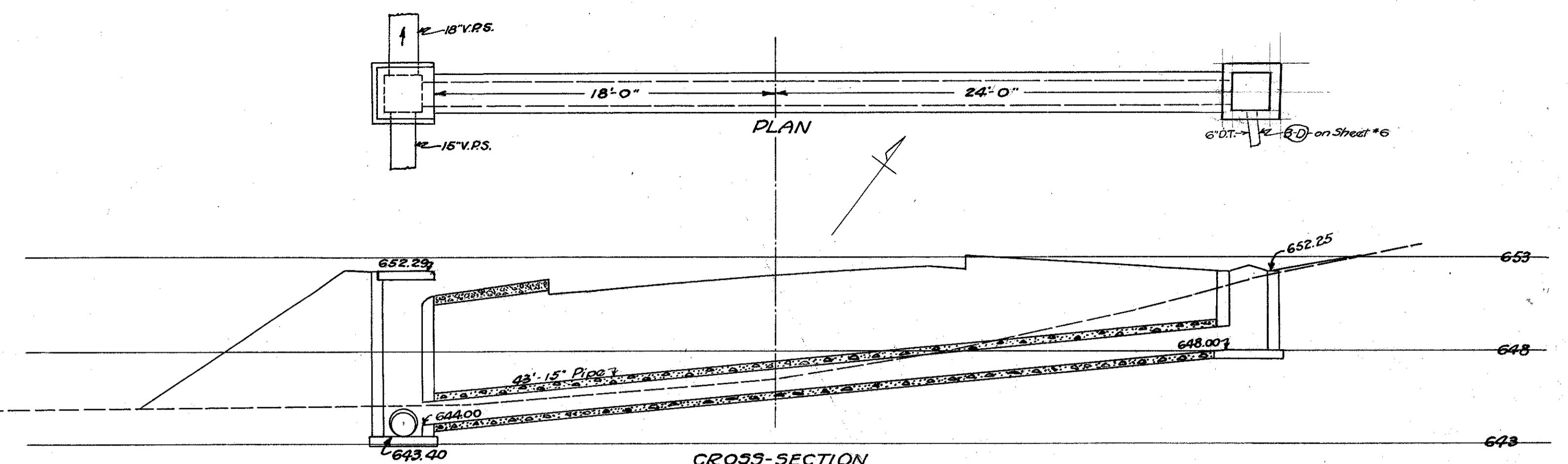


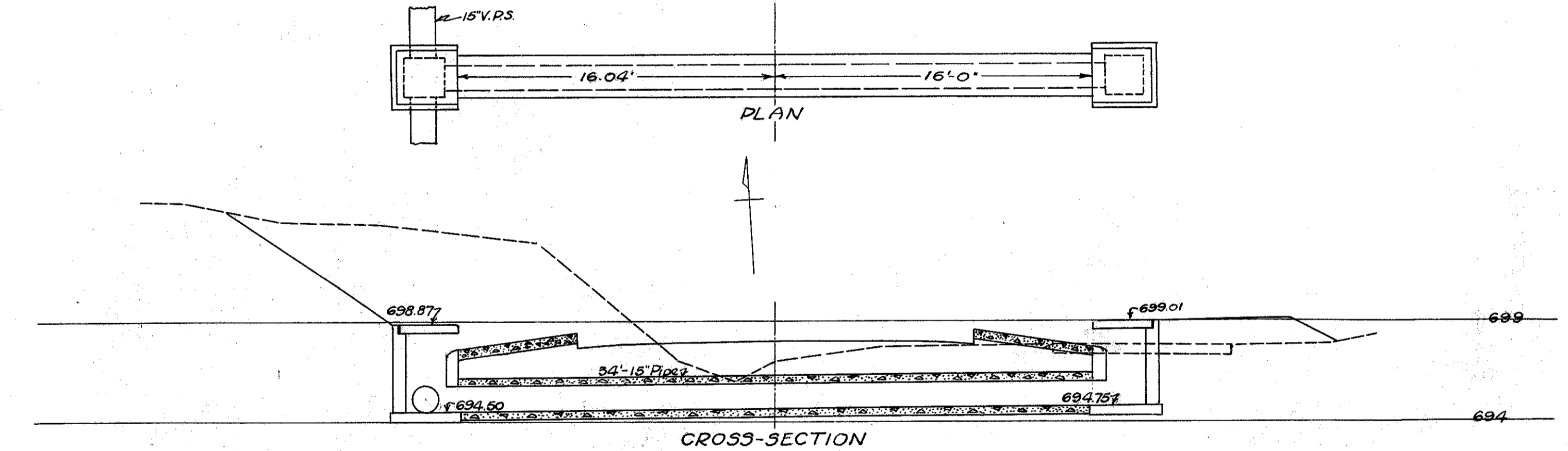
**CULVERT DATA**  
 Type: V.S.P.(a) enc. Std. Dwg. No. 5-27-PC.2, I-B-I-No.5  
 Size: 15" x 34"  
 Work Req.: Build Std. 15" x 34' V.S.P.(a) enc. culvert and build 5th. Curb Inlets (for steep grades) on Rt. & Lt. (See Sid. Dwg. I-B-I-No.5)

ESTIMATED QUANTITIES	
Exc.	13 Cu. Yds.
15" V.S.P.(a) enc.	34 Lin. Ft.
Curb Inlets (I-B-I-No.5)	2 units



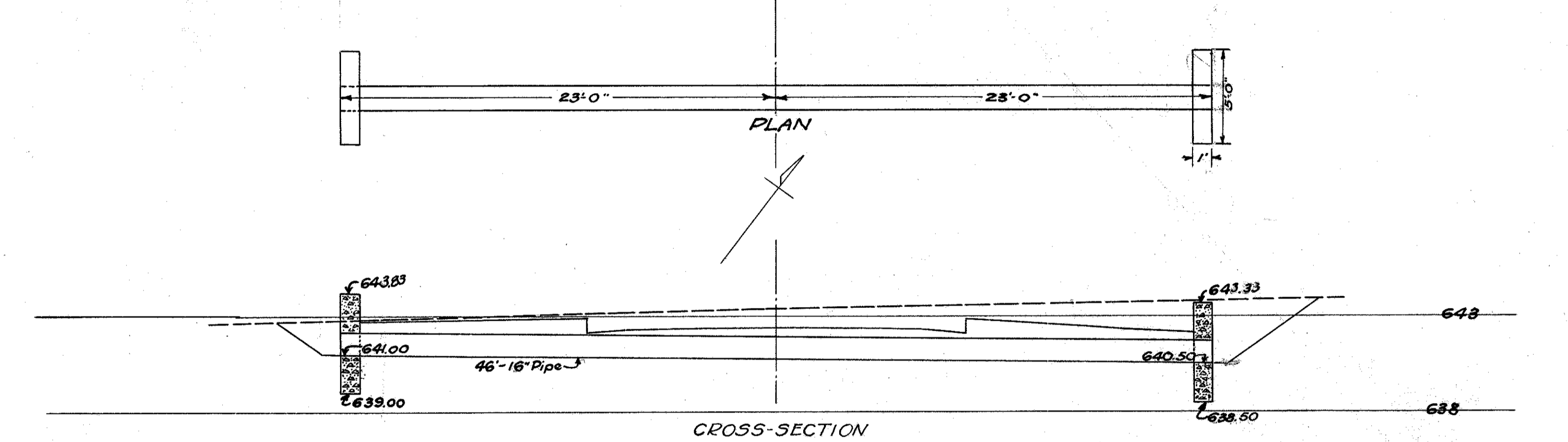
**CULVERT DATA**  
 Type: V.S.P.(a) enc. Std. Dwg. No. 5-27-PC.2, I-B-C.B.1-2, I-B-I-No.5  
 Size: 15" x 43"  
 Work Req.: Build Std. 15" x 43' V.S.P.(a) enc. culvert. Build Curb Inlet (I-B-I-No.5) & Inlet (I-B-C.B.1-2) R. Leave 6" DT. from I.B. on R. to hook up "3-D" on Sheet No. 6.

ESTIMATED QUANTITIES	
Exc.	12 Cu. Yds.
15" V.S.P.(a) enc.	43 Lin. Ft.
Curb Inlet (I-B-I-No.5)	1 unit
Inlet (I-B-C.B.1-2)	1 unit



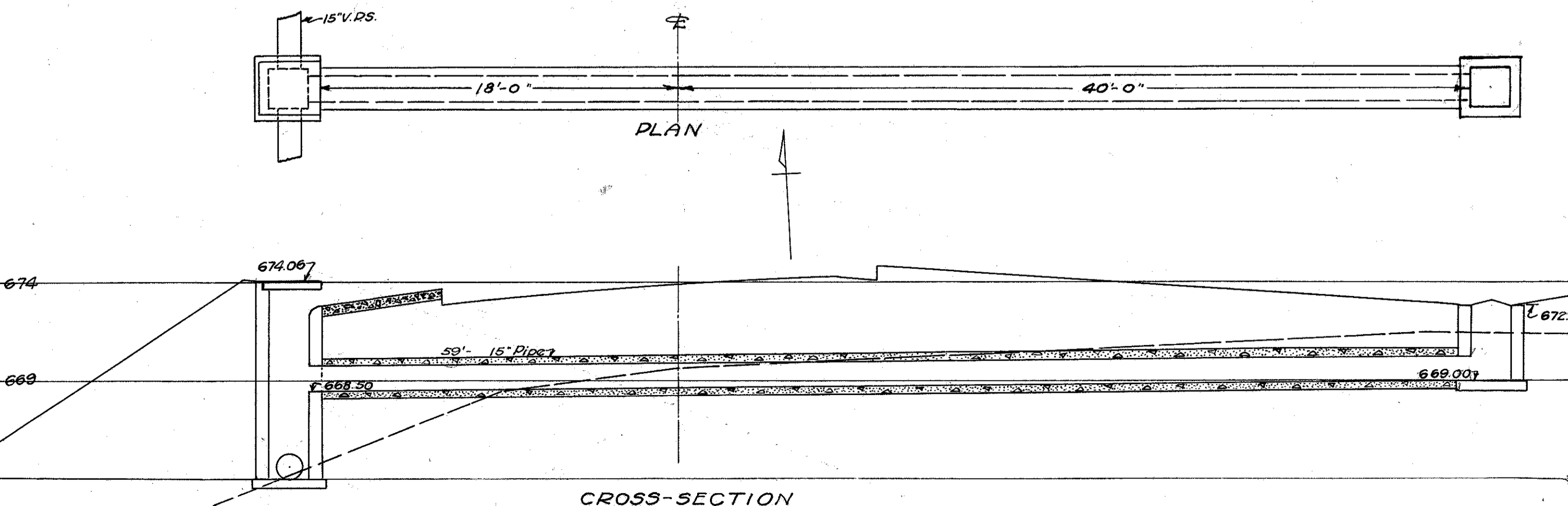
**CULVERT DATA**  
 Type: V.S.P.(a) enc. Std. Dwg. No. 5-27-PC.2, I-B-I-No.5  
 Size: 15" x 34"  
 Work Req.: Build Std. 15" x 34' V.S.P.(a) enc. culvert. Build Curb Inlets (for steep grades) on Rt. & Lt. (See Sid. Dwg. I-B-I-No.5)

ESTIMATED QUANTITIES	
Exc.	15 Cu. Yds.
15" V.S.P.(a) enc.	34 Lin. Ft.
Curb Inlets (I-B-I-No.5)	2 units



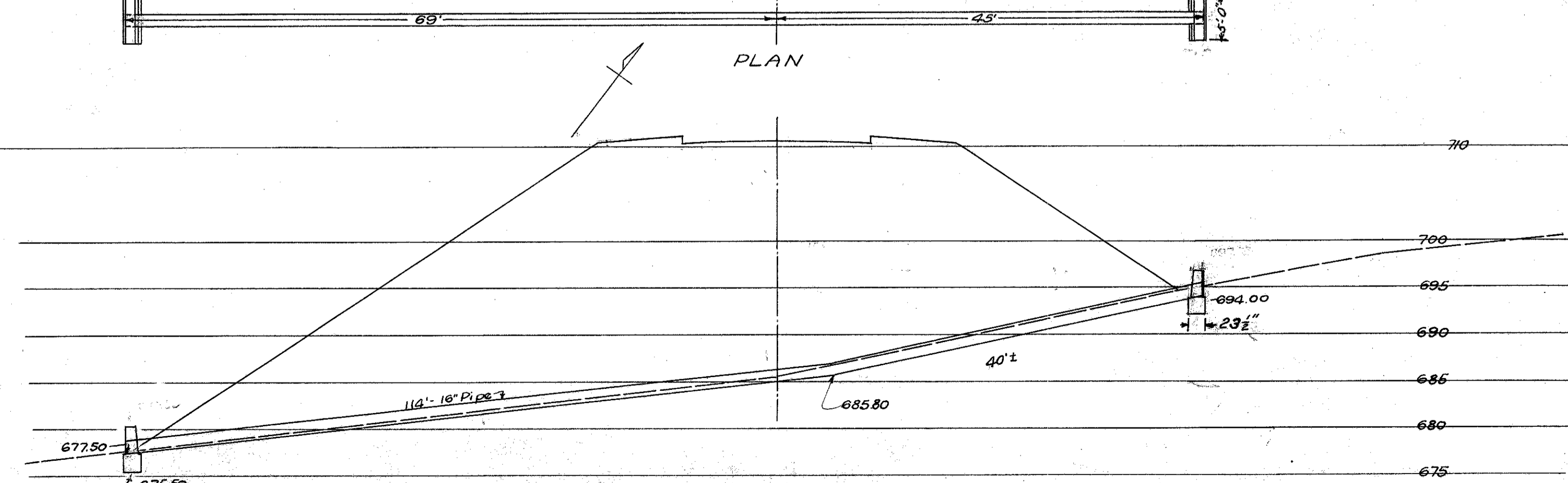
**CULVERT DATA**  
 Type: Solid Cast Iron Pipe Std. Dwg. No. 5-27-PC.1#2  
 Size: 16" x 46"  
 Work Req.: Build Std. 16" x 46' Cast Iron Pipe culvert with Std. Hdw. R+L.

ESTIMATED QUANTITIES	
Exc.	12 Cu. Yds.
16" Cast Iron Pipe	46 Lin. Ft.
Concrete 1-5/2	1.7 Cu. Yds.
Reinf. Steel	47 Lbs.



**CULVERT DATA**  
 Type: V.S.P.(a) enc. Std. Dwg. No. 5-27-PC.2, I-B-C.B.1-2, I-B-I-No.5  
 Size: 15" x 59"  
 Work Req.: Build Std. V.S.P.(a) enc. culvert 15" x 59'. Build Curb Inlet (I-B-I-No.5) & Inlet (I-B-C.B.1-2) on Rt.

ESTIMATED QUANTITIES	
Exc.	14 Cu. Yds.
15" V.S.P.(a) enc.	59 Lin. Ft.
Curb Inlet (I-B-I-No.5)	1 unit
Std. C.B. (I-B-C.B.1-2)	1 unit



**CULVERT DATA**  
 Type: Solid Cast Iron Pipe Std. Dwg. No. 5-27-PC.1#2  
 Size: 16" x 114"  
 Work Req.: Build Std. 16" x 114' Solid Cast Iron Pipe Culvert with 5th. Gravity type Headwalls on Rt. & Lt.

ESTIMATED QUANTITIES	
Exc.	10 Cu. Yds.
16" Cast Iron Pipe	114 Lin. Ft.
Concrete 1-5/2	2.7 Cu. Yds.