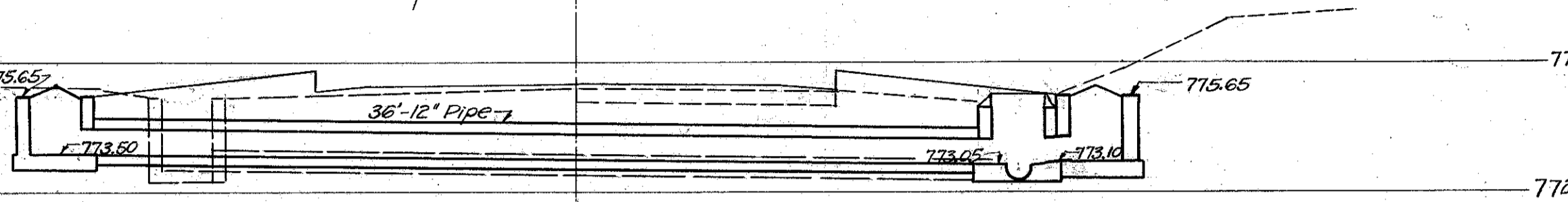
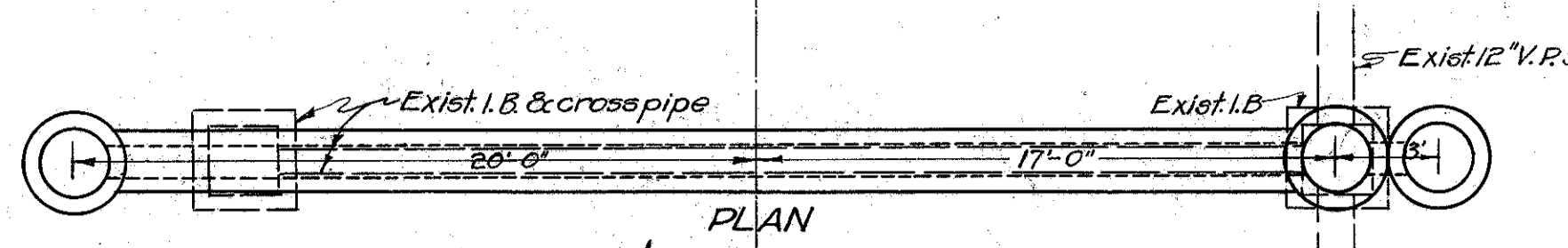


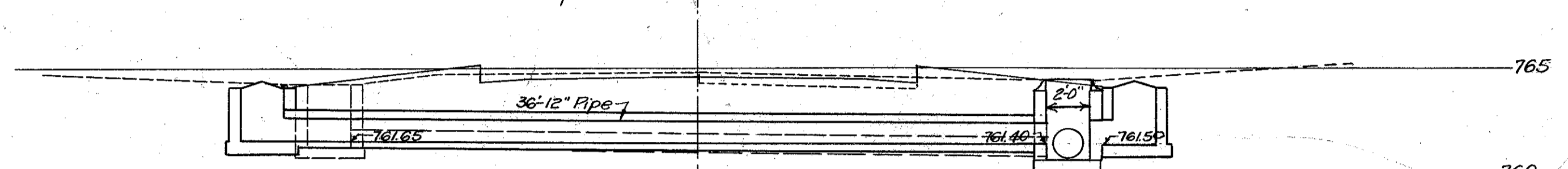
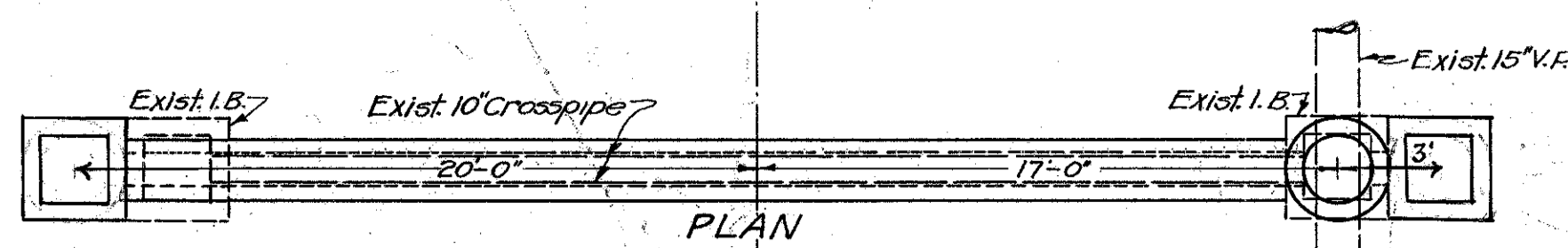
Station 194+80
{ Drainage Structure 2-C Sheet 5 } Not included in this project



CULVERT DATA
 Type: V.S.P. (encased) Std. Dwg. S-27-PC-2, I-B-C.B. 1-2, I-B-M.H. No. 1
 Size: 12" x 38"
 Work Req. Remove exist 10"x32" V.P. and Inlet Basins include for payment in excav.
 Build M.H. 17'R over exist. sewer. Build I.B. 20'R&L. From I.B. on L. to M.H. build 12"x36" V.S.P. (encased) from I.B. on R. build 12"x2" V.S.P. (encased). Use exist. castings for I.B.s.

| ESTIMATED | QUANTITIES |
|----------------------|------------|
| Excav. | 10 Cu.Yds. |
| 12" V.S.P. (encased) | 38 Lin.Ft. |
| Std. I.B.s | 2 |
| " M.H. | 1 |

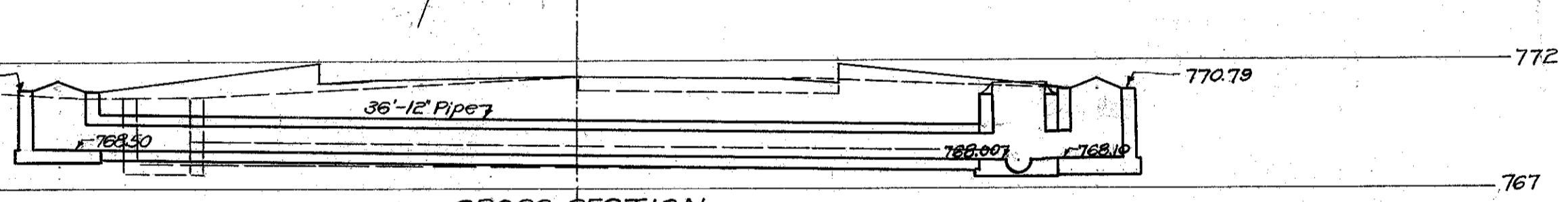
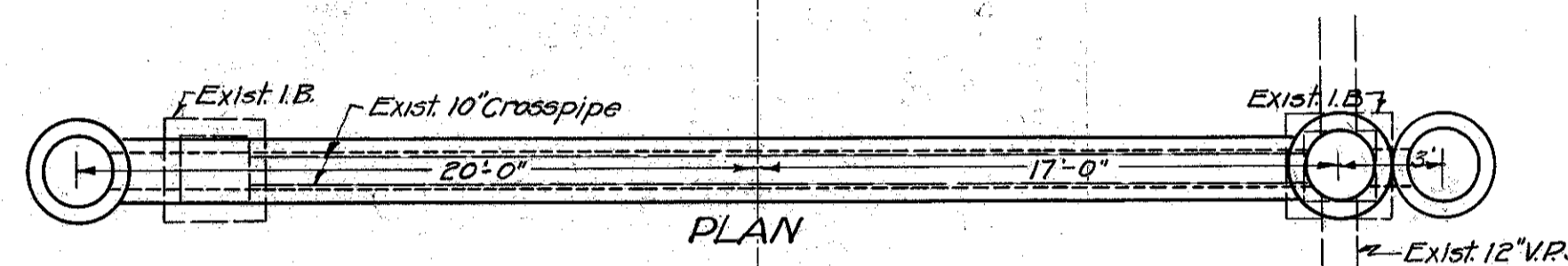
Station 205+80
Drainage Structure 1-C Sheet 3



CULVERT DATA
 Type: V.S.P. (encased) Std. Dwg. S-27-PC-2, I-B-C.B. 1-2, I-B-M.H. 1
 Size: 12" x 38"
 Work Req. Remove exist 10"x32" V.P. & I.B.s. include for payment in excavation.
 Build M.H. 17'R over exist. sewer. Build I.B. 20'R&L. From I.B. on L. to M.H. build 12"x36" V.S.P. (encased) from I.B. on R. to M.H. build 12"x2" V.S.P. (encased). Use exist. castings for C.B.s.

| ESTIMATED | QUANTITIES |
|----------------------|------------|
| Excav. | 12 Cu.Yds. |
| 12" V.S.P. (encased) | 38 Lin.Ft. |
| Std. C.B.s. No. 1-2 | 2 Unit |
| Spec. M.H. | 1 Unit |

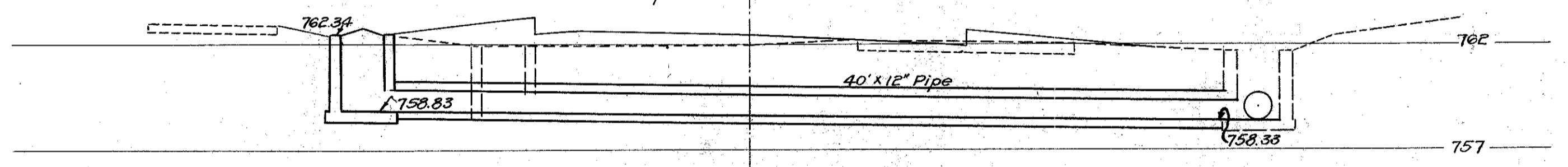
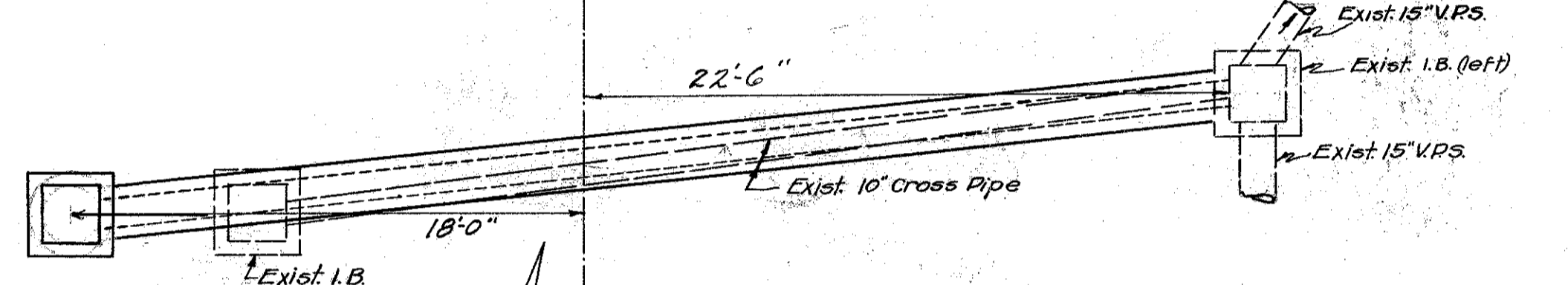
Station 198+40
{ Drainage Structure 3-C Sheet 5 } Not included in this project



CULVERT DATA
 Type: V.S.P. (encased) Std. Dwg. S-27-PC-2, I-B-C.B. 1-2, I-B-M.H. 1
 Size: 12" x 38"
 Work Req. Remove exist 10"x32" V.P. & I.B.s. include for payment in excavation.
 Build M.H. 17'R over exist. sewer. Build I.B. 20'R&L. From I.B. on L. to M.H. build 12"x36" V.S.P. (encased) from I.B. on R. build 12"x2" V.S.P. (encased). Use exist. castings for I.B.s.

| ESTIMATED | QUANTITIES |
|----------------------|------------|
| Excav. | 10 Cu.Yds. |
| 12" V.S.P. (encased) | 38 Lin.Ft. |
| Std. I.B.s | 2 |
| M.H. | 1 |

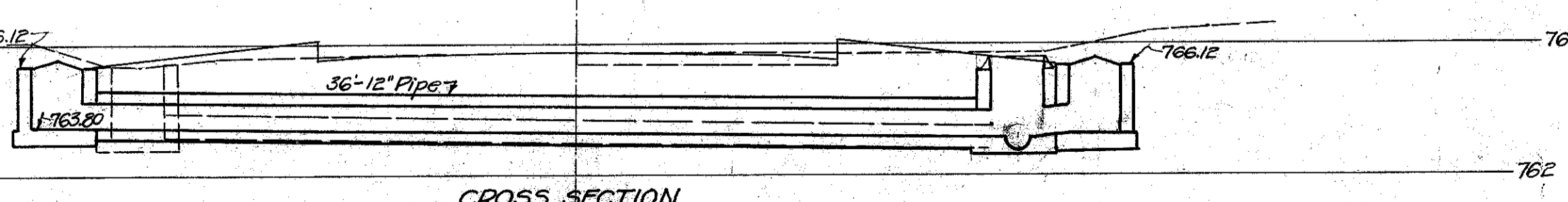
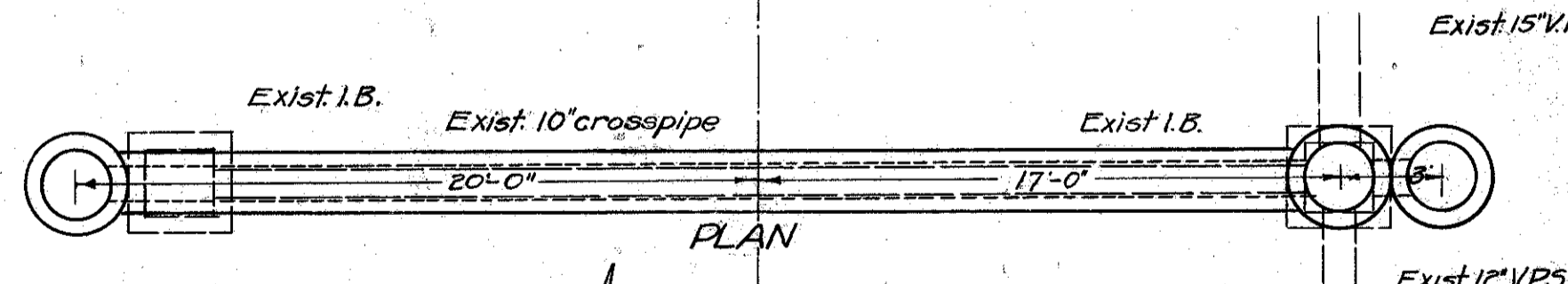
Station 209+81
Drainage Structure 2-C Sheet 3



CULVERT DATA
 Type: V.S.P. (encased) Std. Dwg. No. S-27-PC-2, I-B-C.B. 1-2
 Size: 12" x 40"
 Work Req. Remove exist 10"x34" V.P. & I.B. on L. include for payment in excavation.
 Build I.B. 18' to L. and build 12"x40" V.S.P. (encased) from I.B. on L. to existing I.B. on R. Use exist. casting for I.B.

| ESTIMATED | QUANTITIES |
|----------------------|------------|
| Exc. | 14 Cu.Yds. |
| 12" V.S.P. (encased) | 40 Lin.Ft. |
| Std. C.B. No. 1-2 | 1 Unit |

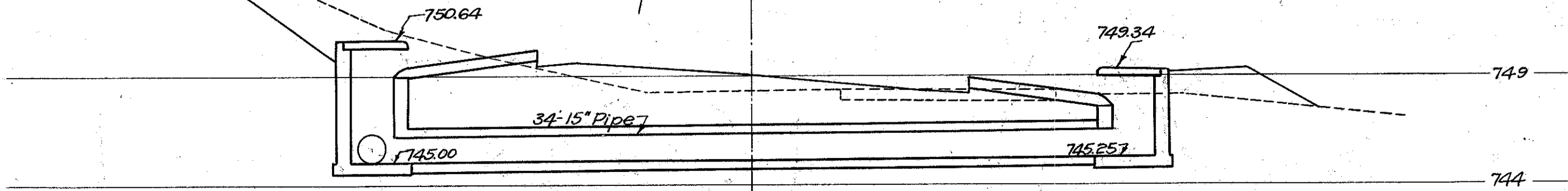
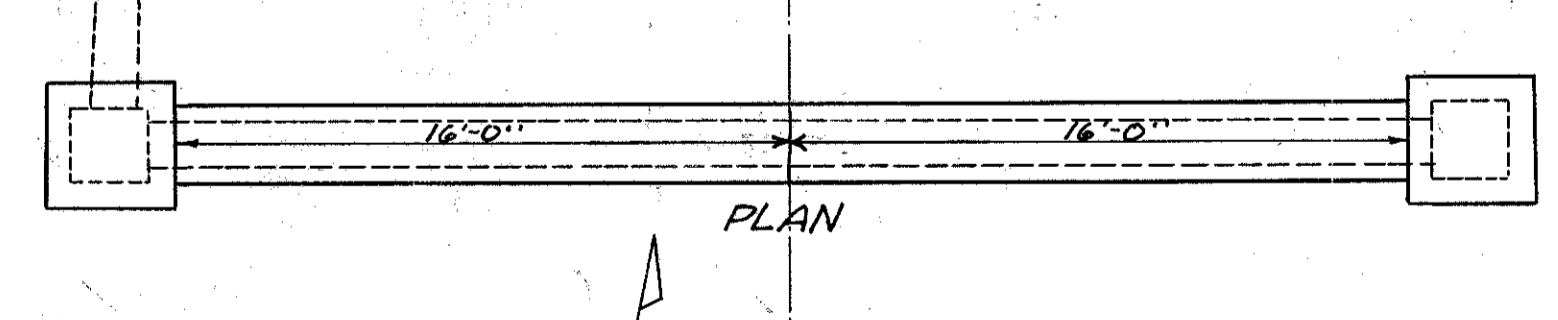
Station 201+92
{ Drainage Structure 4-C Sheet 5 } Not included in this project



CULVERT DATA
 Type: V.S.P. (encased) Std. Dwg. No. S-27-PC-2, I-B-C.B. 1-2, I-B-M.H. 1
 Size: 12" x 38"
 Work Req. Remove exist 10"x32" V.P. & I.B.s. include for payment in excavation.
 Build M.H. 17'R over exist. sewer. Build I.B. 20'R&L. From I.B. on L. to M.H. build 12"x36" V.S.P. (encased) from I.B. on R. to M.H. build 12"x2" V.S.P. (encased). Use exist. castings for I.B.s.

| ESTIMATED | QUANTITIES |
|----------------------|------------|
| Excav. | 10 Cu.Yds. |
| 12" V.S.P. (encased) | 38 Lin.Ft. |
| Std. I.B.s | 2 |
| M.H. | 1 |

Station 212+75
Drainage Structure 3-C Sheet 3



CULVERT DATA
 Type: V.S.P. (encased) Std. Dwg. No. S-27-PC-2, I-B-I-No. 5
 Size: 15" x 34"
 Work Req. Build Std. 15"x34" V.S.P. (encased) culvert.
 Build Std. Curb Inlet (for steep grades) on Rt. & Lt. (See Std. Dring. I-B-I-No. 5)

| ESTIMATED | QUANTITIES |
|---------------------------|-------------|
| Exc. | 16 Cu.Yds. |
| 15" V.S.P. (encased) | 34 Lin. Ft. |
| Std. Inlets (I-B-I-No. 5) | 2 units |