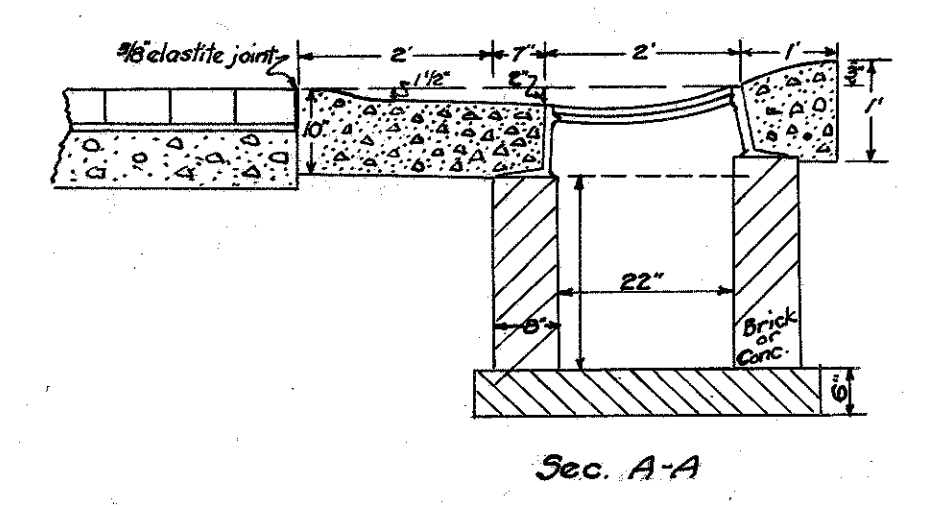


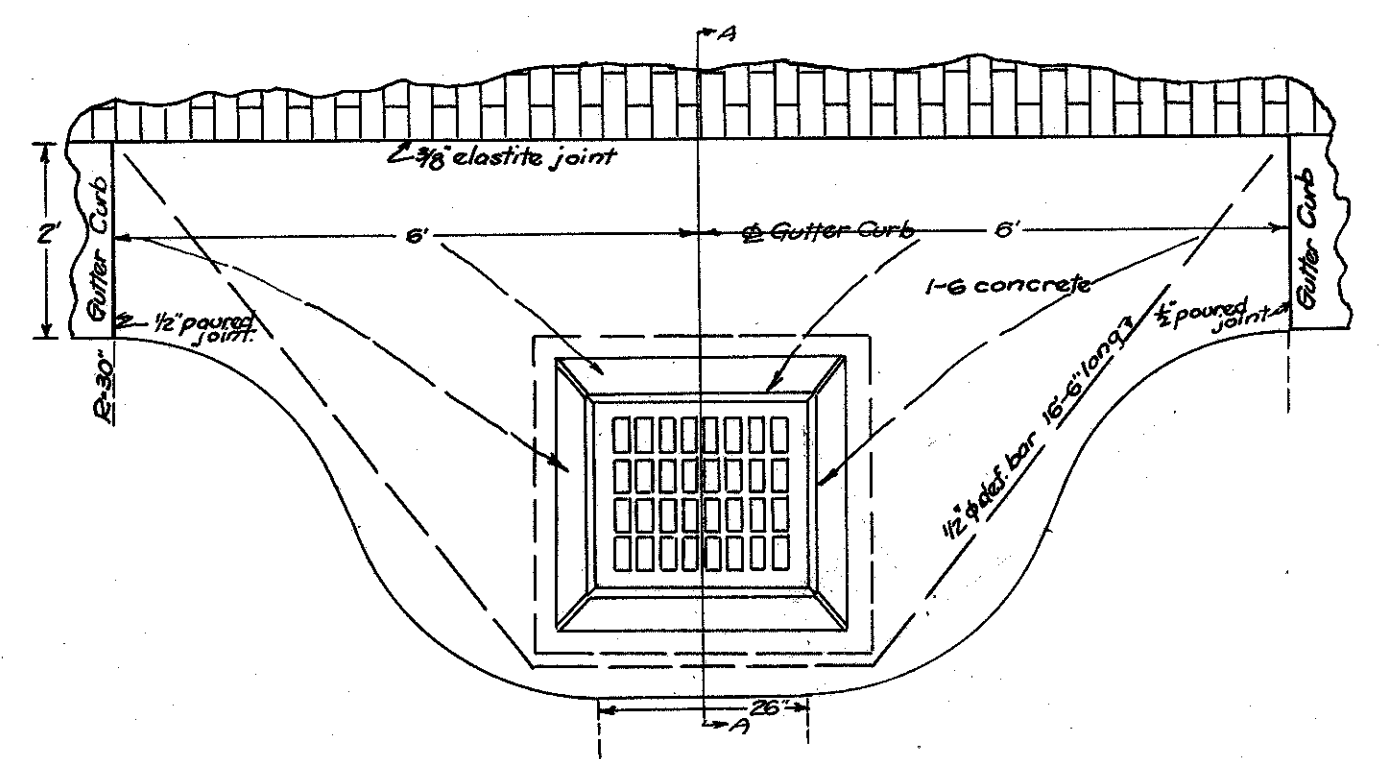
Scale 1" = 20'

INTERSECTION AT STA 326±  
EXTRA CONC. PAV'T 83.5 SYDS.

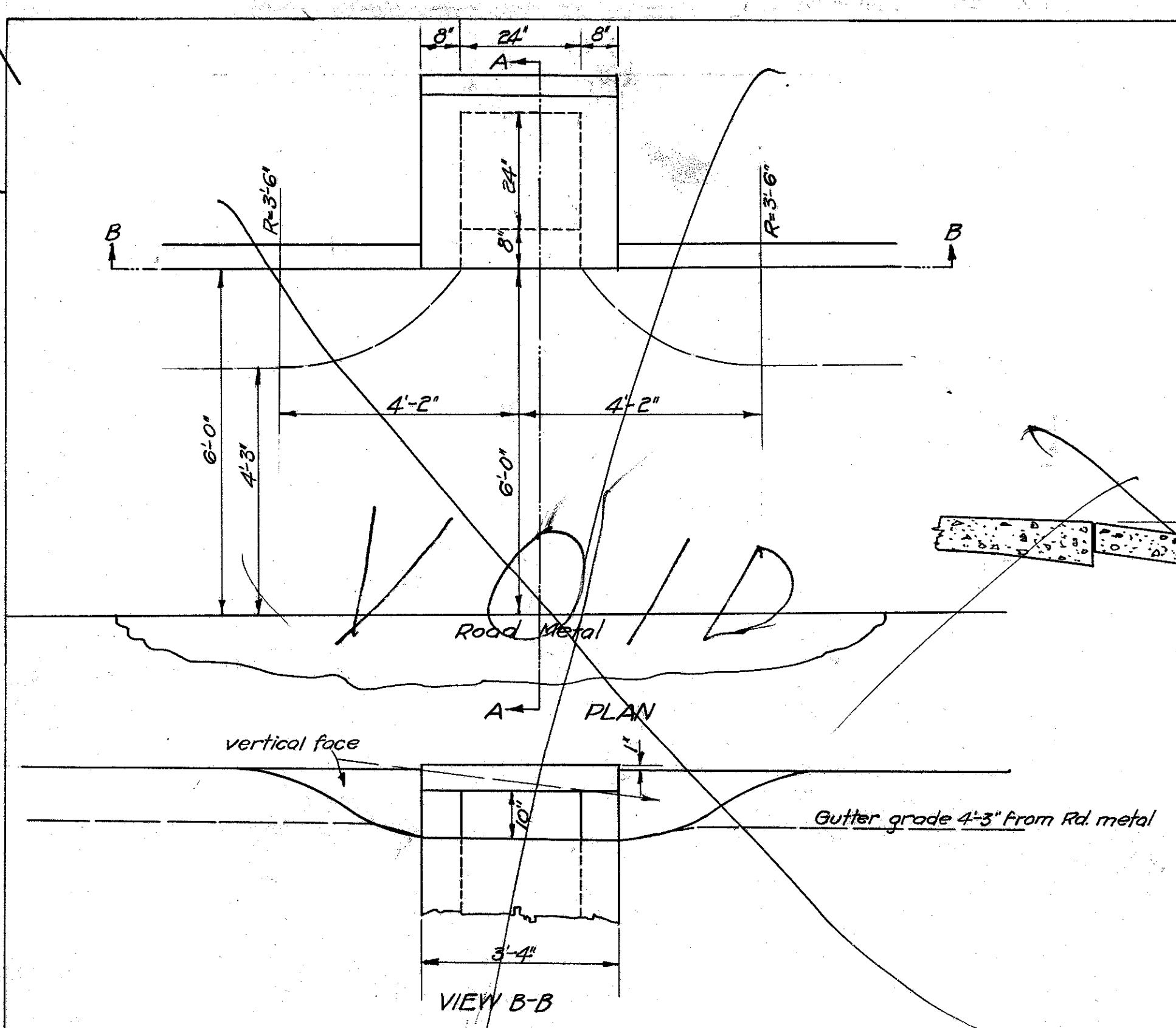
INTERSECTION AT STA 295±  
EXTRA CONC. PAV'T 125.3 SYDS.



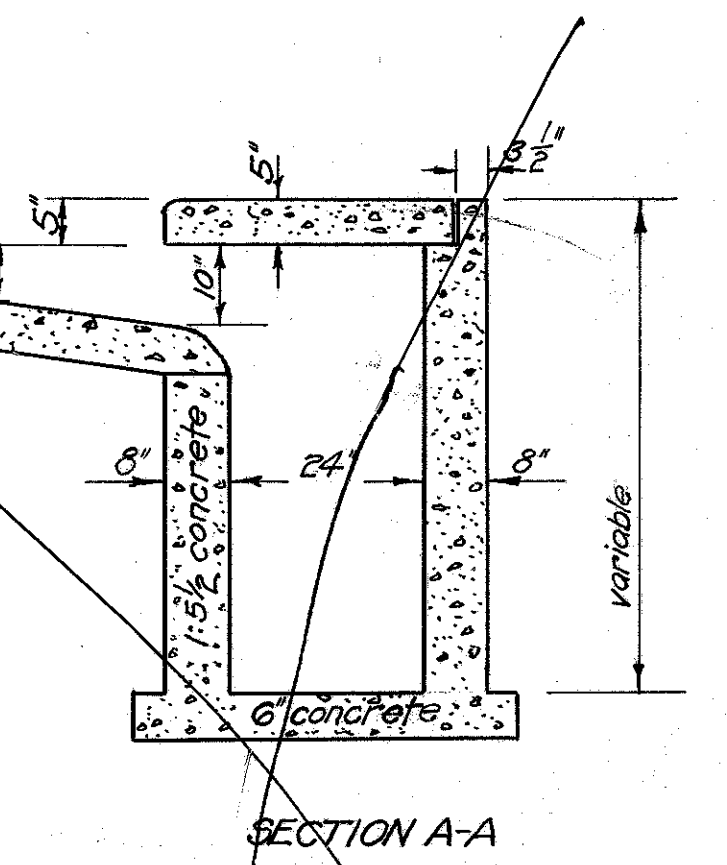
No Scale.



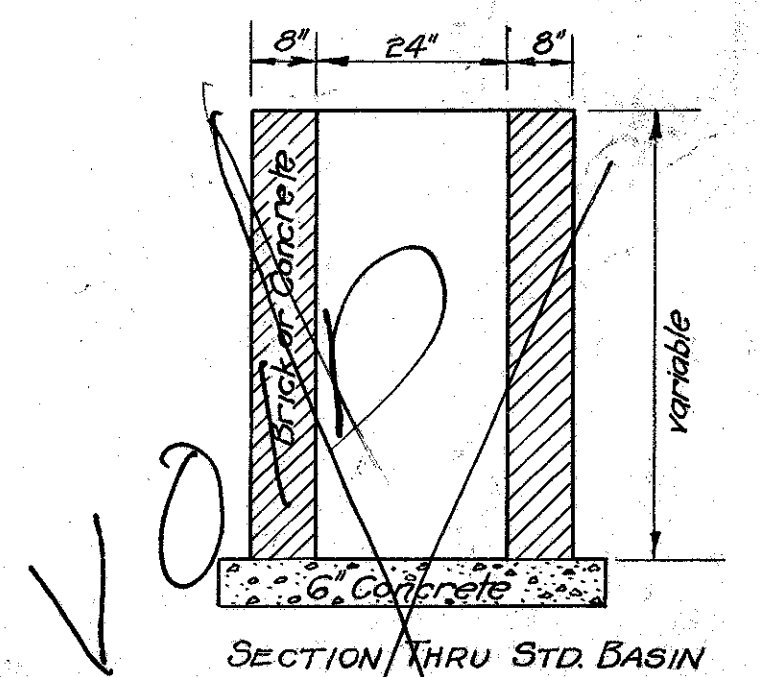
PLAN OF INLET BASIN at Sta. 326+97  
Note: Present basin top to be reset; 1-6 concrete & 1/2" bar included in Concrete Pavement Item. } Not Used



Scale 1" = 2'



PLAN OF SPECIAL BASIN TO BE USED WITH TYPE II CONCRETE GUTTER



SECTION THRU STD. BASIN  
Description: May be built square or round, 2' internal diameter. Cap with low cone type casting.  
Note: Manholes conform to this same section and shall be capped with Manhole Casting in lieu of low cone type casting.

Scale 1" = 2'