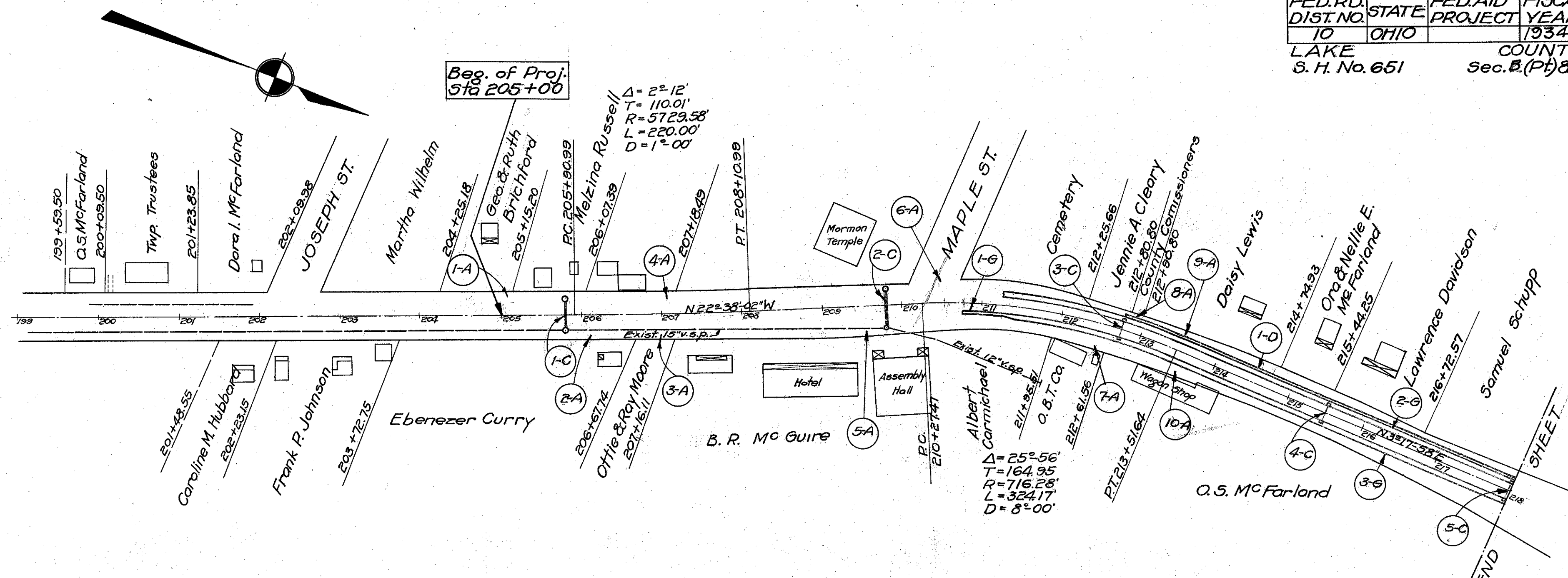


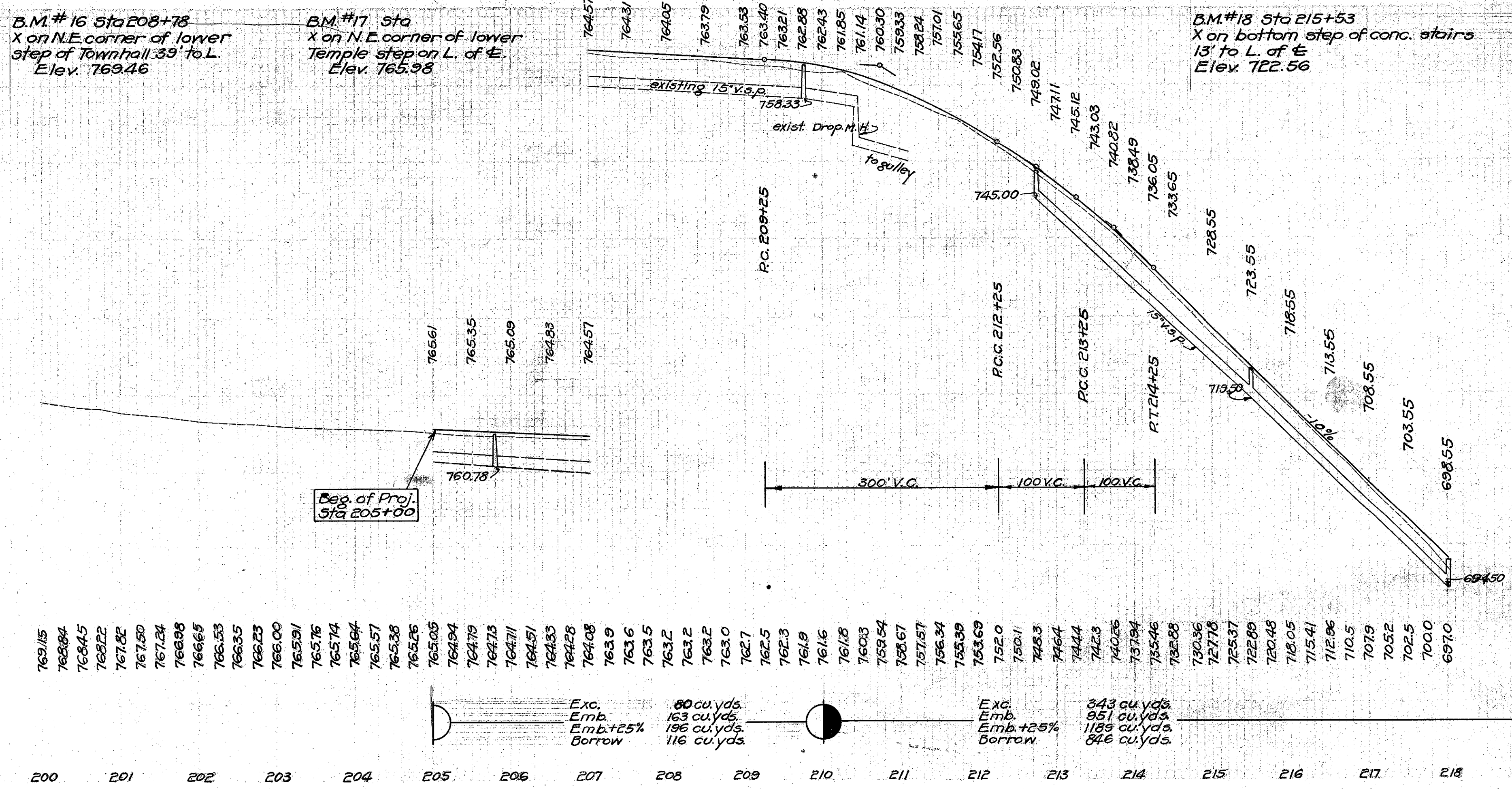
Item No.	Station	Rt.	Corr. I.P.	Agg. cu. yds.
1-A	205+02	Lt.	12"	3
2-A	206+12	Rt.		3
3-A	206+99	Rt.		3
4-A	207+18	Lt.		3
5-A	208+52	Rt.		3
6-A	210+50	Lt.		10
7-A	212+54	Rt.		3
8-A	212+89	Lt.		3
9-A	213+56	Lt.		3
10-A	213+40	Rt.		10
TOTAL				44



STRUCTURES 20' SPAN & UNDER (C)										WORK REQUIRED									
Structure No.	Item No.	Station	Removal		Type	Size	Excav. cu. yds.	V.S.P. (enc)		Inlets using exist. holes	Man. I-8-15	Inlets I-8-15	REMARKS	Item No.	Station	Type	Rt.	Lft.	Remarks
			Type	Size				Lin. Ft.	Lin. Ft.										
LA-306-39	1-C	205+80	V.P.	10"	32'	V.S.P. (enc)	12" x 33"	12	38	15"	2	1	Removal of exist. structure included in excav.	1-G	210+75	curb & gutter	Rt.	50	at Rt. edge of pav.
LA-306-40	2-C	209+81	V.P.	10"	34'	V.S.P. (enc)	12" x 40"	14	40		1		Remove 34'-10" V.P. and basin on L; Build pipe culv. with I.B. on L, use exist. casting.	2-G	211+25	2	Rt.	675	Std. D.I. 14G No. 2
LA-306-40A	3-C	212+75				V.S.P. (enc)	15" x 34"	16	34			2	Build Std. 15" x 34" pipe culv. I.B. on R. and L.	3-G	211+25	2	Lt.	675	Std. D.I. 14G No. 2
LA-306-41	4-C	215+50				V.S.P. (enc)	15" x 34"	13	34			2							
LA-306-41A	5-C	218+00				V.S.P. (enc)	15" x 34"	15	34			2							
Total					66			70	78	102	3	1	6						

Item No.	Station	Type	Rt.	Lft.	Remarks
1-G	210+75	curb & gutter	Rt.	50	at Rt. edge of pav.
2-G	211+25	2	Rt.	675	Std. D.I. 14G No. 2
3-G	211+25	2	Lt.	675	Std. D.I. 14G No. 2
Total	1350'	Type 2		50'	curb and gutter

Item No.	Station	Rt.	Pipe Lin. Ft.	Remarks
1-D	212+76	Lt.	521	12" 15"
Total			521	



Station	Elevation
769.15	
768.84	
768.45	
768.22	
767.82	
767.50	
767.24	
766.98	
766.65	
766.53	
766.35	
766.23	
766.00	
765.91	
765.76	
765.74	
765.64	
765.57	
765.38	
765.26	
765.05	
764.94	
764.79	
764.73	
764.71	
764.51	
764.28	
764.08	
763.9	
763.6	
763.5	
763.2	
763.2	
763.2	
763.0	
762.7	
762.5	
762.3	
761.9	
761.6	
761.8	
760.3	
759.54	
758.67	
757.57	
756.34	
755.39	
753.69	
750.1	
748.3	
746.4	
744.4	
742.3	
740.56	
737.84	
735.46	
732.88	
730.36	
727.78	
725.37	
722.89	
720.48	
718.05	
715.41	
712.96	
710.5	
707.9	
705.2	
702.5	
700.0	
697.0	

Exc.	60 cu. yds.	Exc.	343 cu. yds.
Emb.	163 cu. yds.	Emb.	951 cu. yds.
Borrow	196 cu. yds.	Borrow	1189 cu. yds.
			846 cu. yds.