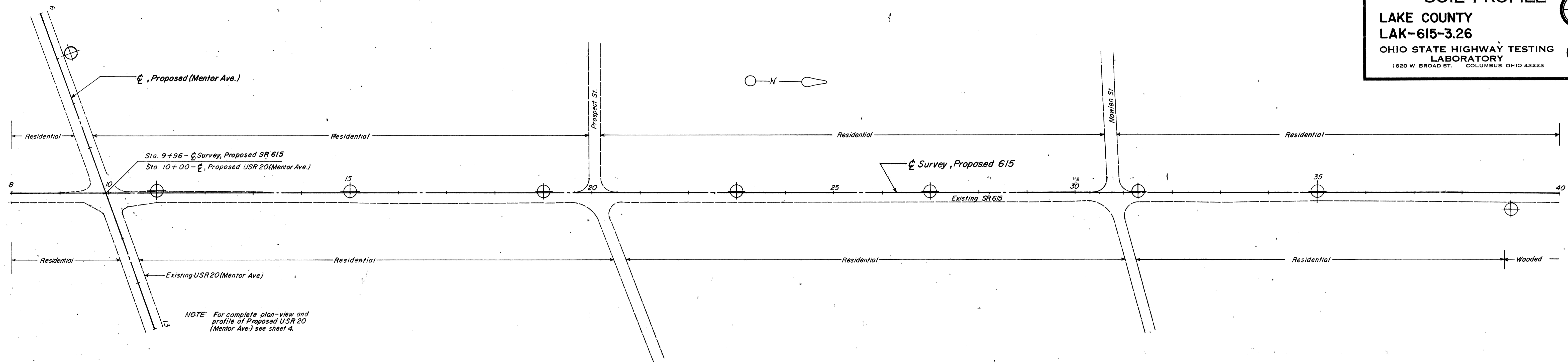
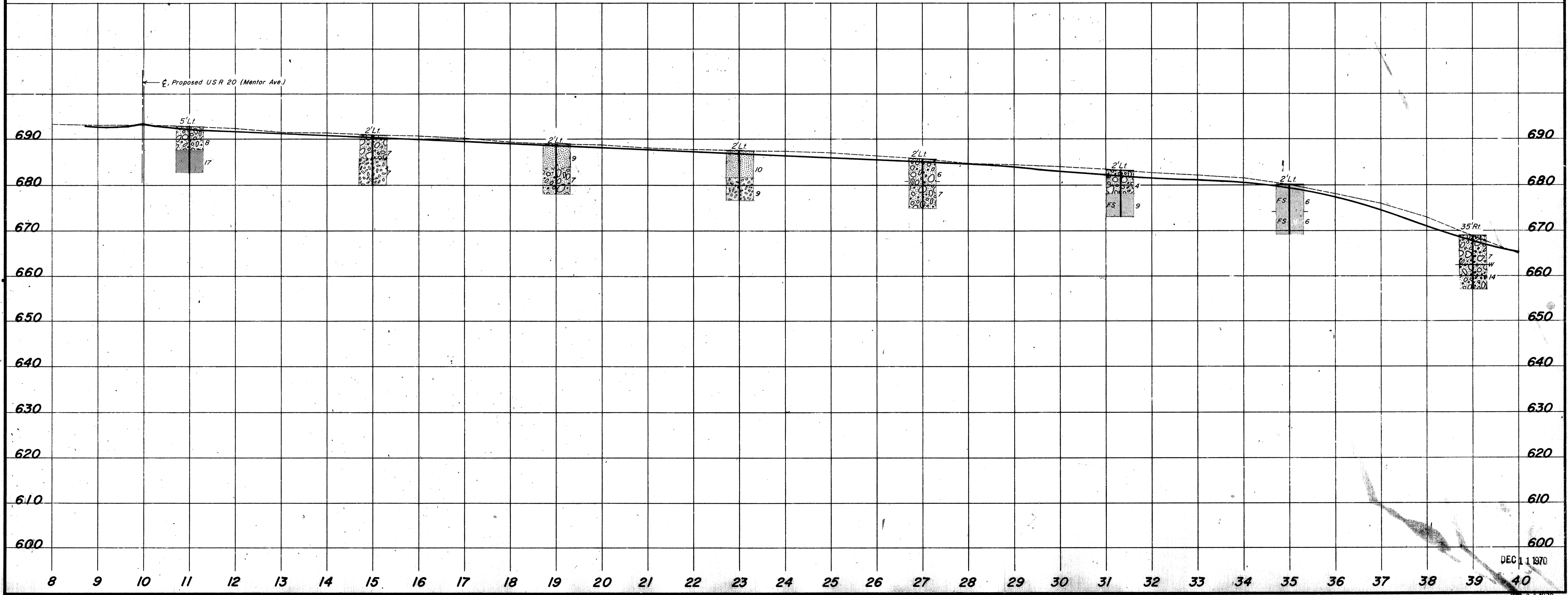


SOIL PROFILE
 LAKE COUNTY
 LAK-615-3.26
 OHIO STATE HIGHWAY TESTING
 LABORATORY
 1620 W. BROAD ST. COLUMBUS, OHIO 43223

2/13
 2/4



NOTE: For complete plan-view and profile of Proposed USR 20 (Mentor Ave.) see sheet 4.



DEC 11 1970

JUN 26 1970