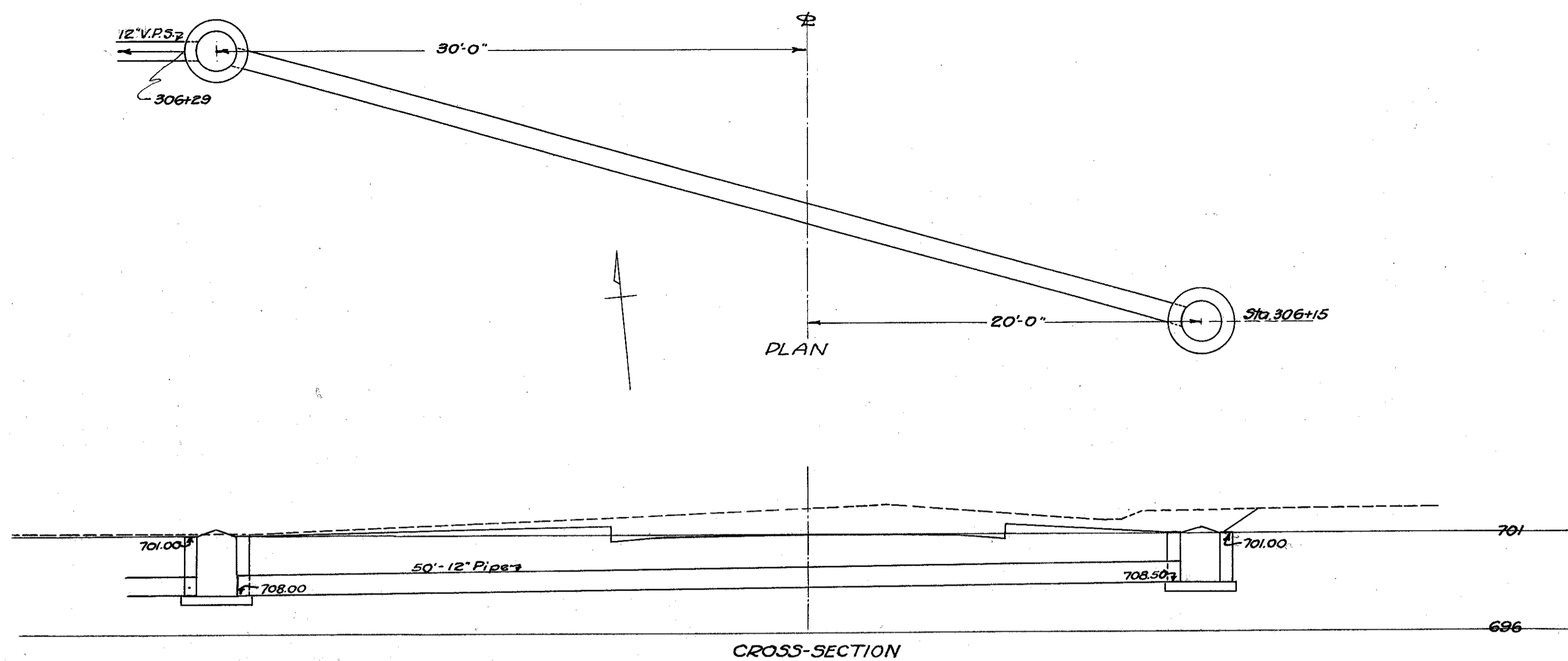
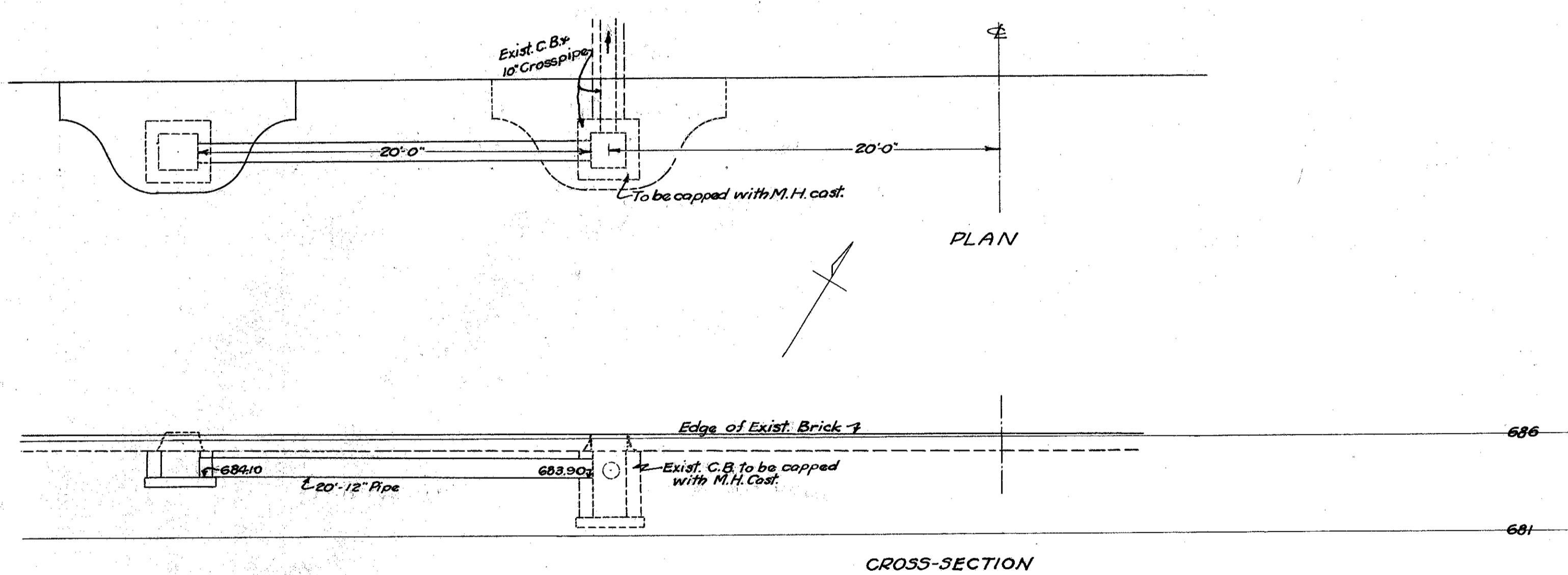


Station 306+20
Drainage Structure 5-C Street 8



CULVERT DATA	ESTIMATED QUANTITIES
Type: Cast Iron Pipe	Exc. 11 Cu. Yds.
Size: 12" x 50'	12" Cast Iron Pipe 50' Lin. Ft.
Work Req.: Build 12" x 50' Std. Cast Iron pipe culvert from Sta. 306+15-20R to Sta. 306+29-30L. Build Std. I.B. R+L, from I.B. on L., leave 12" outlet for sewer.	Std. I.B.s (F-8-C.B.T-2) 2 Units

Station 326+97
Drainage Structure 1-C Street 9



CULVERT DATA	ESTIMATED QUANTITIES
Type: Cast Iron Pipe	Exc. 8 Cu. Yds.
Size: 12" x 20'	12" Cast Iron Pipe 20' Lin. Ft.
Work Req.: From exist. C.B. build 12" x 20' Cast Iron Pipe to L. At L end build I.B. using exist. casting. Put M.H. casting on exist. C.B.	I.B. using exist. casting 1 Unit
	M.H. Cast. 1 Unit