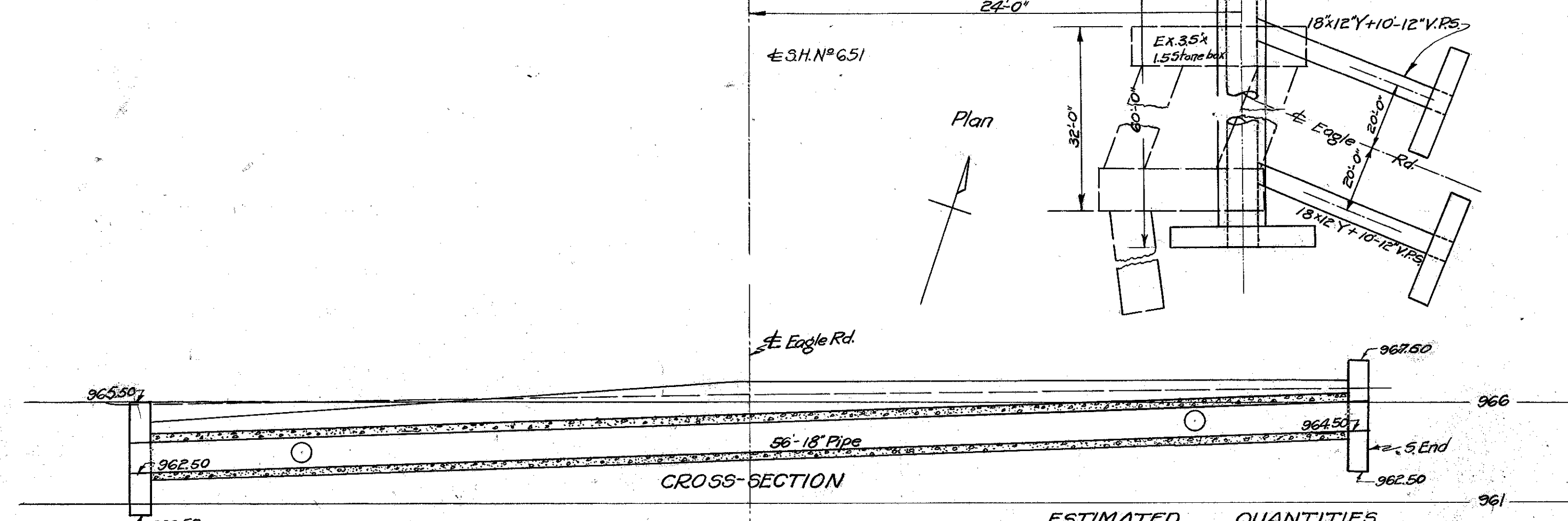


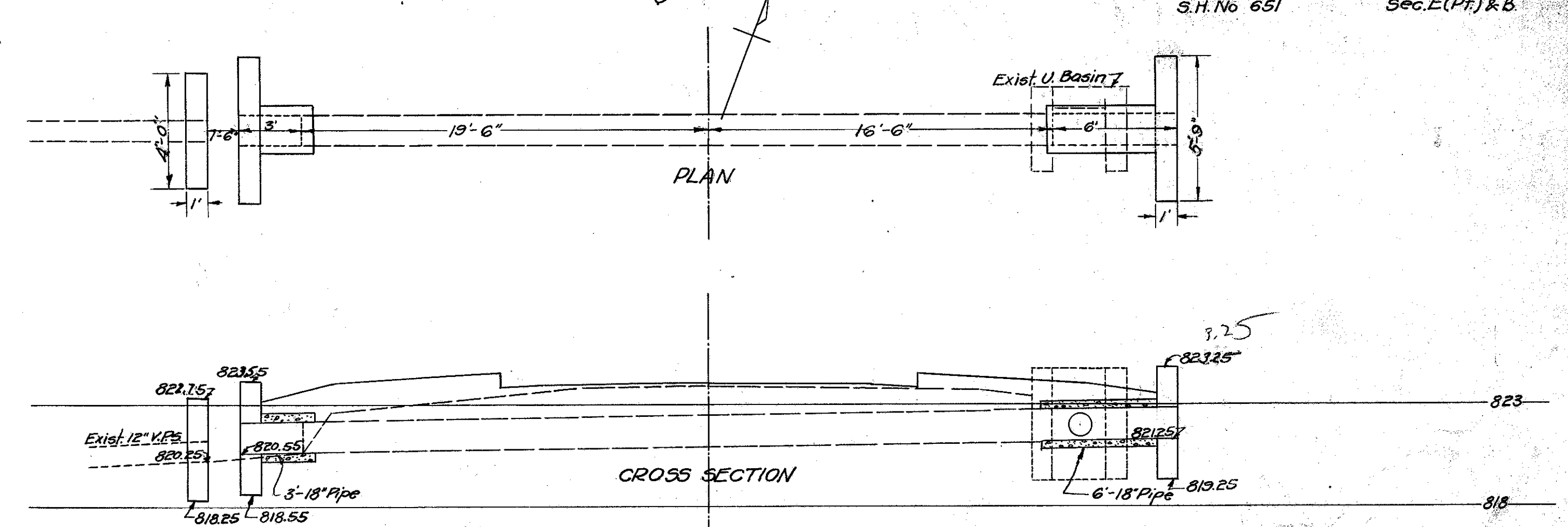
Station 125+80.44 on R.
Drainage Structure 1-C Sheet 3



CULVERT DATA
 Type: V.S.P. (exc.) Std. Dwg. No. S-27-PC.1#2
 Size: 18" x 60"
 Work Req'd: Remove 3.5 x 1.5 Stone Box. Build 18" x 60" V.S.P. (exc.) 24' R of E Place 2 18" x 12 Ys and lay 10' of 12" V.P.S. 20' N. & S. of E of Eagle Road. Build H.W.s. on ends of 12" Sewer.

ESTIMATED	QUANTITIES
Exc.	30 Cu.Yds.
Stone Mas. Rem.	30 "
Concrete 1-5/2	3.3 "
Reinf. Steel	92 Lbs.
18" V.S.P. (exc.)	56 Lin.Ft.
18" x 12" Ys	2
12" V.S.P. (a)	20 Lin.Ft.

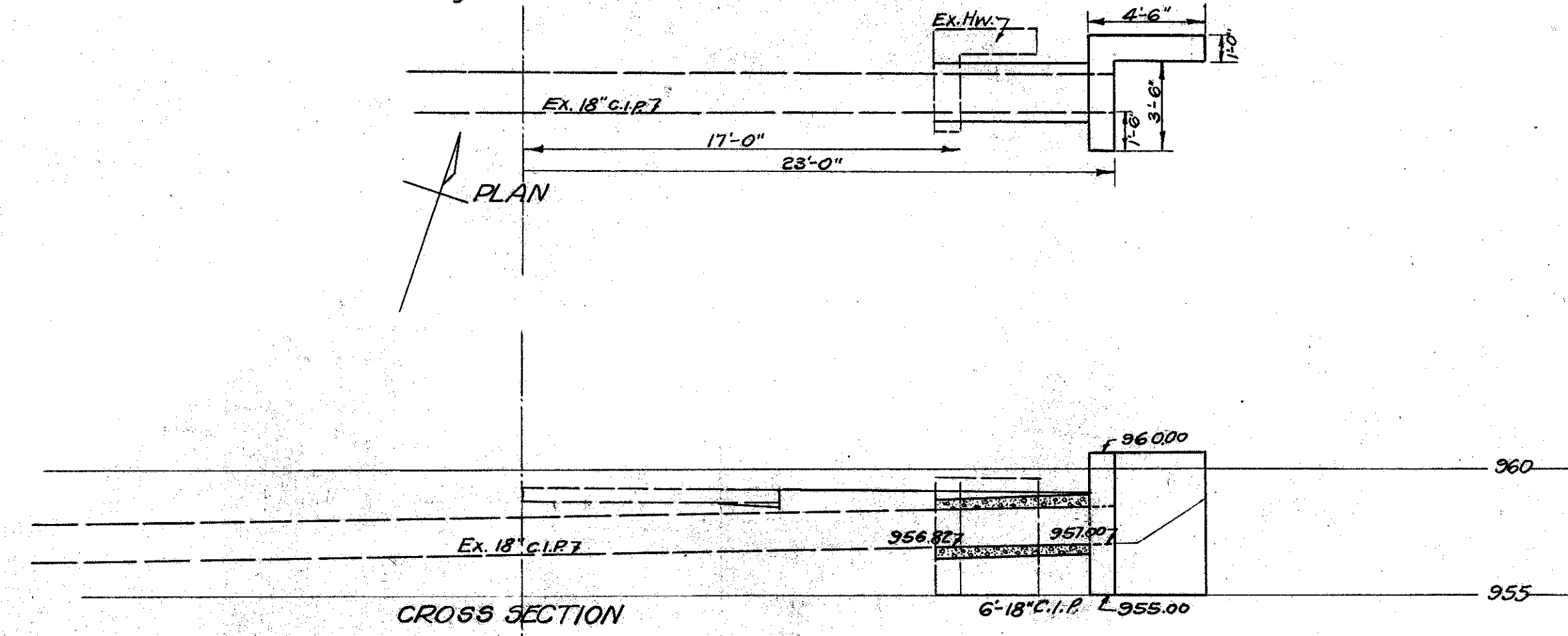
Station 154+53
Drainage Structure 1-C Sheet 4



CULVERT DATA
 Type: Cast I.P. Extensions Std. Dwg. No. S-27-PC.1+2
 Size: 18" x 9"
 Work Req'd: Remove existing U-Basin and clean existing pipe culvert. Extend exist. C.I.P. culvert 6'R & 3'L with 18" Cast I.P. Build H.W.s. R. & L. and on existing 12" Outlet sewer on L.

ESTIMATED	QUANTITIES
Exc.	10 Cu.Yds.
18" Cast I.P.	9 Lin.Ft.
Concrete 1-5/2	2.7 Cu.Yds.
Reinf. Steel	72 Lbs.
Old Concrete Removed	2.5 Cu.Yds.

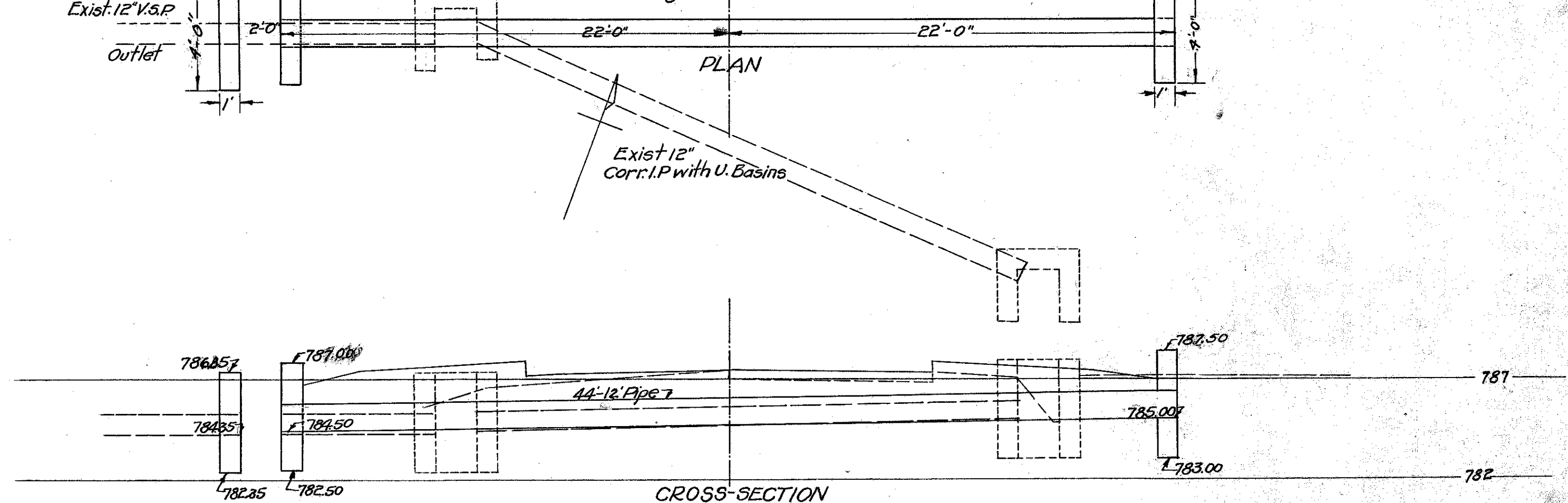
Station 127+43
Drainage Structure 2-C Sheet 3



CULVERT DATA
 Type: Cast Iron Pipe Std. Dwg. No. S-27-PC.1#2
 Size: 18" x 6"
 Work Req.: Remove old concrete headwall. Extend existing 18" C.I.P. culvert 6'R with 18" C.I.P. Build angle headwall on Rt.

ESTIMATED	QUANTITIES
Exc.	2 Cu.Yds.
18" Cast Iron Pipe	6 Lin.Ft.
Concrete (1-5/2)	1.35 Cu.Yds.
Reinf. Steel	40 Lbs.
Old Concrete Rem.	2 Cu.Yds.

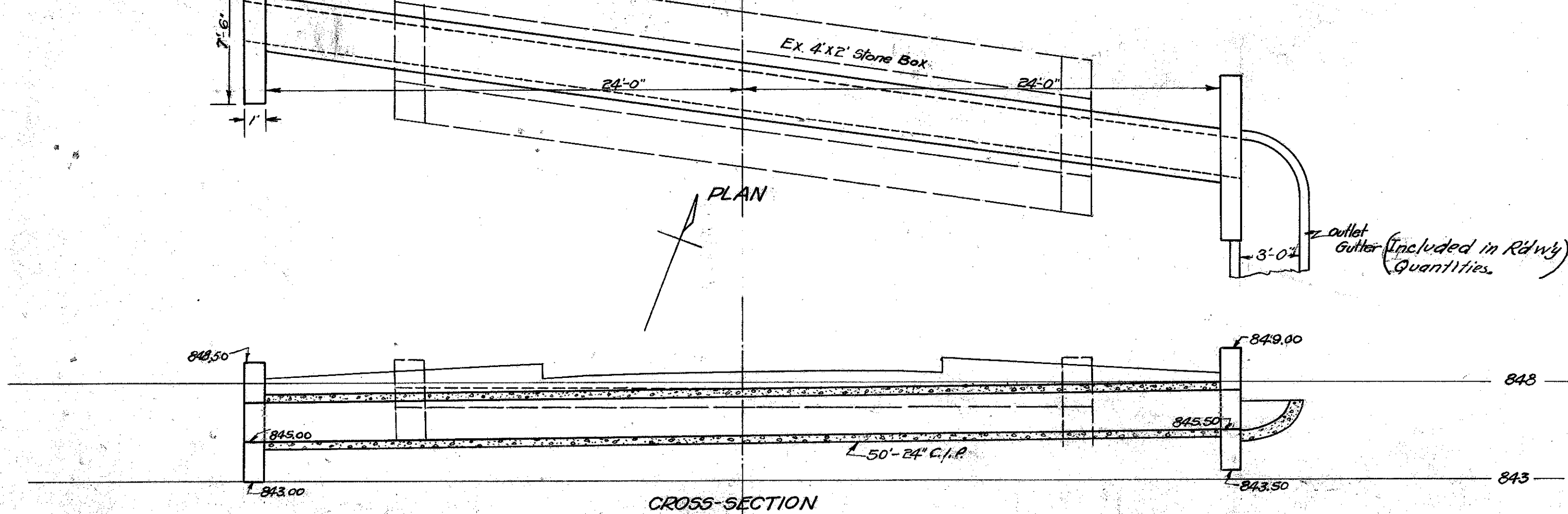
Station 177+12
Drainage Structure 2-C Sheet 4



CULVERT DATA
 Type: Cast iron pipe Std. Dwg. No. S-27-PC.1#2
 Size: 12" x 44"
 Work Req.: Remove exist 12" Corr. I.P. + U. Basins and part of outlet. Build 12" x 44" Cast iron pipe culvert. Build H.W.s. R+L. and on existing outlet sewer.

ESTIMATED	QUANTITIES
Exc.	18 Cu.Yds.
12" Cast iron pipe	44 Lin.Ft.
1-5/2 Concrete	2.0 Cu.Yds.
Reinf. Steel	60 Lbs.
Old Concrete Removed	50 Cu.Yds.
12" Pipe Removed	40 Lin.Ft.

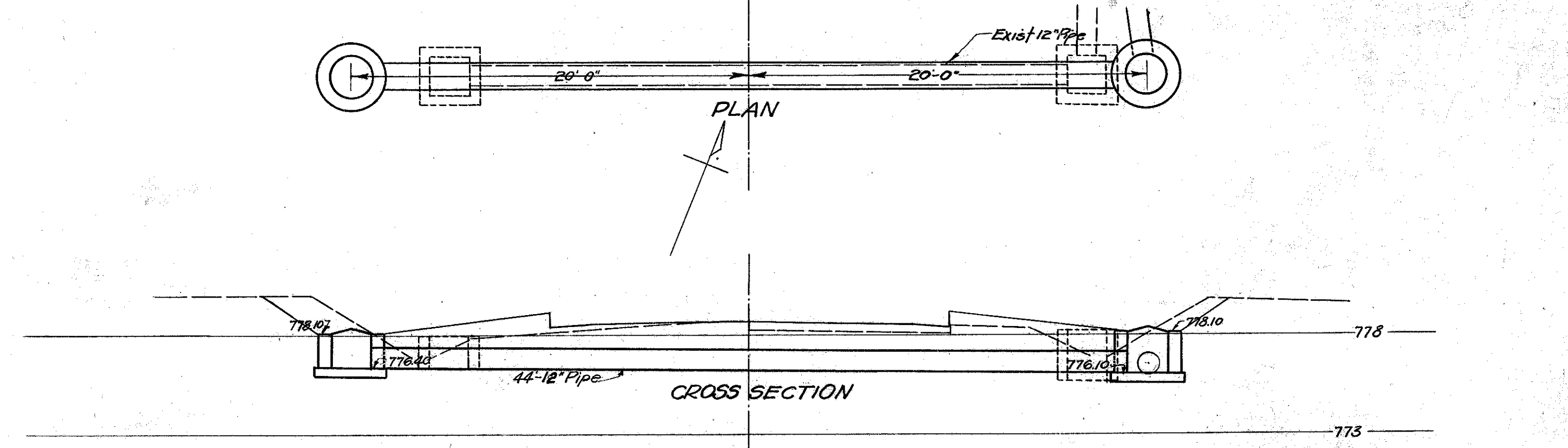
Station 146+75
Drainage Structure 3-C Sheet 3



CULVERT DATA
 Type: C.I.P. C.V. Std. Dwg. No. S-27-PC.1#2
 Size: 24" x 50"
 Work Req'd: Remove parapets + cover stones of exist. 4' x 2' Stone box. Build 24" x 50" Cast Iron pipe culvert inside the walls of Stone box culvert. Build Head wall R+L.

ESTIMATED	QUANTITIES
Exc.	8 Cu.Yds.
Conc. 1-5/2	2.8 "
Reinf. Steel	6.4 Lbs.
Stone Mas. Removed	14 Cu.Yds.
24" C.I.P.	50 Lin.Ft.

Station 191+03
Drainage Structure 1-C Sheet 5



CULVERT DATA
 Type: Cast iron pipe Std. Dwg. S-27-PC.1#2, I-B-C.B.1-2
 Size: 12" x 38"
 Work Req.: Remove 32'-10" V.P. Basins include for payment with excavation. Build 36' 12" x 38" Solid Cast iron pipe culvert. Build Std. Inlet Basin 20' R & 20' L. From I.B. on R. leave 12" V.P. outlet (sewer quant)

ESTIMATED	QUANTITIES
Exc.	10 Cu.Yds.
12" Cast iron pipe	38 Lin.Ft.
Std. Catch Basin (exist. cast gused) (I-B.C.B.1-2)	2