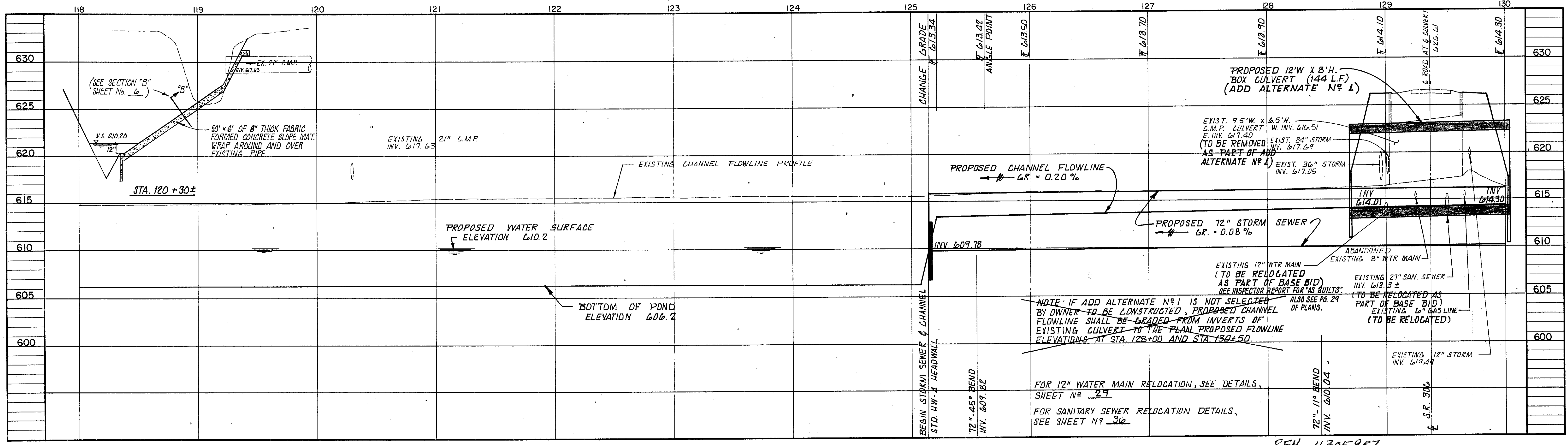
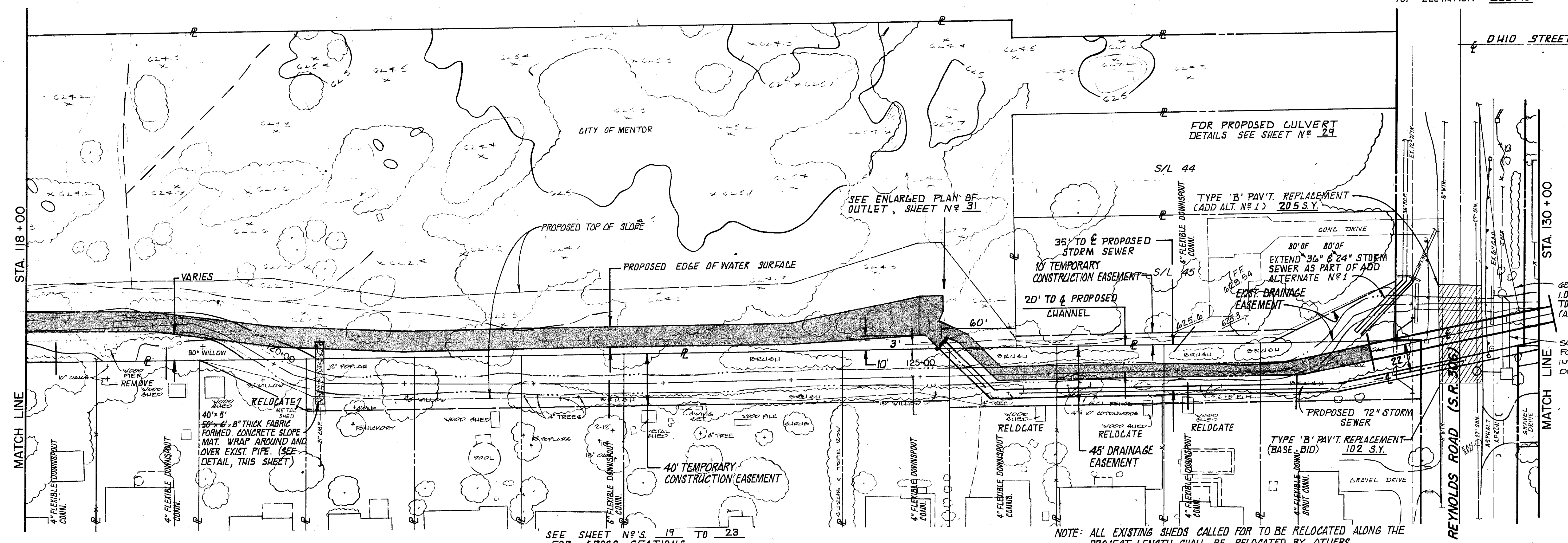


BENCHMARK
HYDRANT AT INTERSECTION
OHIO STREET & S.R. 306
TOP ELEVATION 628.70



COLPETZER-THOMAS, INC.
AN ENGINEERING GROUP
WILLOUGHBY • MENTOR • NORTH CANTON • STEUBENVILLE • LORAIN

REV. NO.	DESCRIPTION	DATE	BY	CHKD.
1.	AS BUILTS - 40' x 5'; 8" FABRIC FORMED CONCRETE SLOPE	8-2-88	JAS	
2.	AS BUILTS - FLEXIBLE DOWNSPOUT CONNS.	8-2-88	JAS	
3.	DELETION OF NOTE IN PROFILE AND WATER MAIN NOTE ADDITION.	8-2-88	JAS	

**HORVITZ POND
DRAINAGE IMPROVEMENT
CITY OF MENTOR
LAKE COUNTY, OHIO**

DATE: OCT 1987
DRAWN BY: J.C. & P.L.
CHECKED BY:
APPROVED BY:
F.B. No. 821 PG. 44

PLAN & PROFILE
OF
OUTLET CHANNEL
STA. 118+00 TO STA. 130+00
LAK-306-0784 GOOD HOLD DITCH

SCALES	
HOR.	1" = 40'
VERT.	1" = 5'
CONTRACT NO. 87/360	
SHEET NO. 7	OF 7