

DATE	
BY	
PLAN	
SURVEYED	
ALIGNED	
NOTE BOOK	
RT. OF WAY	
NO.	

DATE	
BY	
PROFILE	
SURVEYED	
PLOTTED	
GRADES CHECKED	
B. M. NOTED	
EXC. & EMB. NOTED	
NO.	

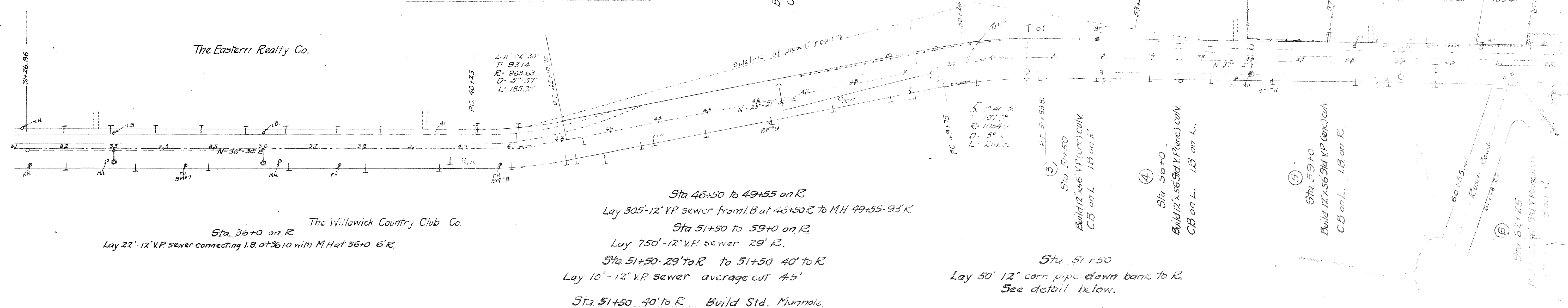
STATE OF OHIO
 SH 520
 LAKE COUNTY

Build Std. I.B.s. on R. at Sta. 33+0, 36+0.
 Sta. 33+0 on R.
 Lay 22'-12" V.P. sewer connecting I.B. at 33+0 with M.H. at 33+0 6'R.

Type "D-1" Guard Rail
 Sta. 47+0 to 51+0 400 lin. ft. on L.
 Sta. 49+90 to 50+22 32 lin. ft. on R.

Sta 46+50
 Build 12"x56" Std. V.P. (conc.) culv
 I.B. on L.

PC 49+75
 PI 50+82.78
 PT 51+89.81



Sta. 36+0 on R.
 Lay 22'-12" V.P. sewer connecting I.B. at 36+0 with M.H. at 36+0 6'R.

Sta 46+50 to 49+55 on R.
 Lay 305'-12" V.P. sewer from I.B. at 46+50 R. to M.H. 49-55-93' R.
 Sta 51+50 to 59+0 on R.
 Lay 750'-12" V.P. sewer 29' R.
 Sta 51+50 29' to R. to 51+50 40' to R.
 Lay 10'-12" V.P. sewer average cut 4.5'
 Sta. 51+50 40' to R. Build Std. Manhole.

Sta 51+50
 Lay 50' 12" corr. pipe down bank to R.
 See detail below.

B.M.*7 Sta. 34+43
 N. capbolt Fire Hyd.
 29' R. Elev. 621.85

B.M.*8 Sta. 40+74
 N. capbolt Fire Hyd.
 30' R. Elev. 624.17

B.M.*9 Sta. 46+22
 Spike Tel. Pole
 32' R. Elev. 621.96

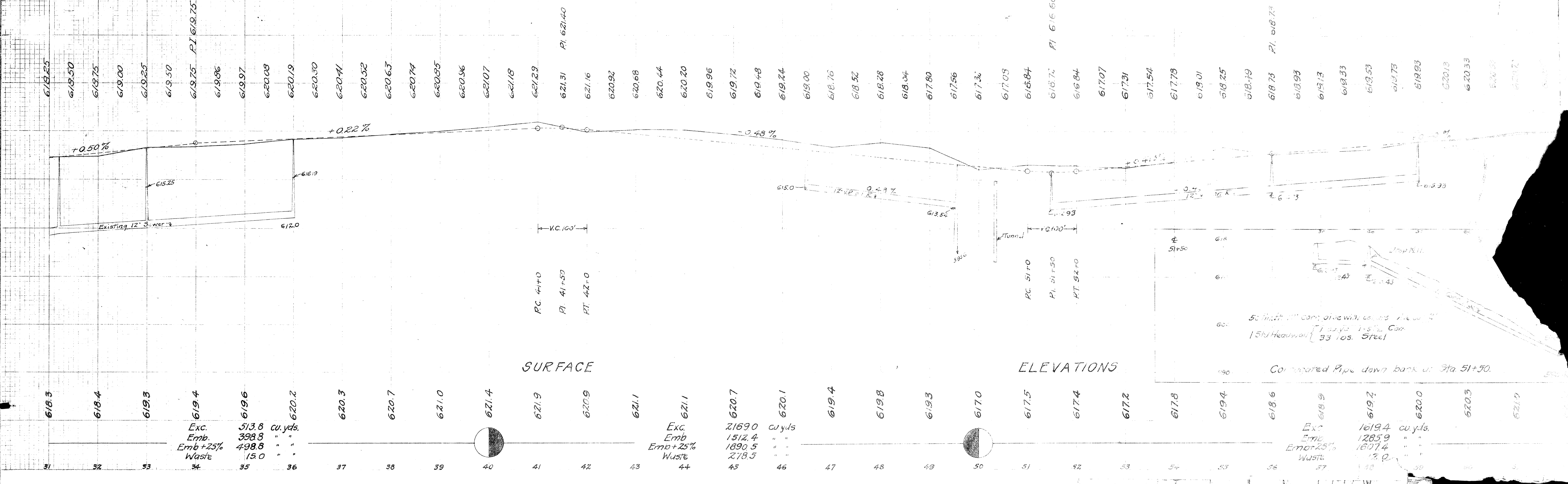
B.M.*10 Sta. 52+90
 Scapbolt Fire Hyd.
 36' R. Elev. 618.86

B.M.*11 Sta. 56+44
 Spike Tel. Pole
 30' R. Elev. 620.40

B.M.*12 Sta. 62+21
 Spike Tel. Pole
 34' R. Elev. 620.33

Note: Vertical Scale of Profile 1" = 5'

Note: Grade line shown is top of raised curb



Exc. 513.8 cu. yds.
 Emb. 398.8 " "
 Emb + 25% 498.8 " "
 Waste 15.0 " "

Exc. 2169.0 cu. yds.
 Emb. 1512.4 " "
 Emb + 25% 1890.5 " "
 Waste 278.5 " "

Exc. 1619.4 cu. yds.
 Emb. 1285.9 " "
 Emb + 25% 1607.4 " "
 Waste 12.2 " "

Compared Pipe down bank at Sta 51+50.