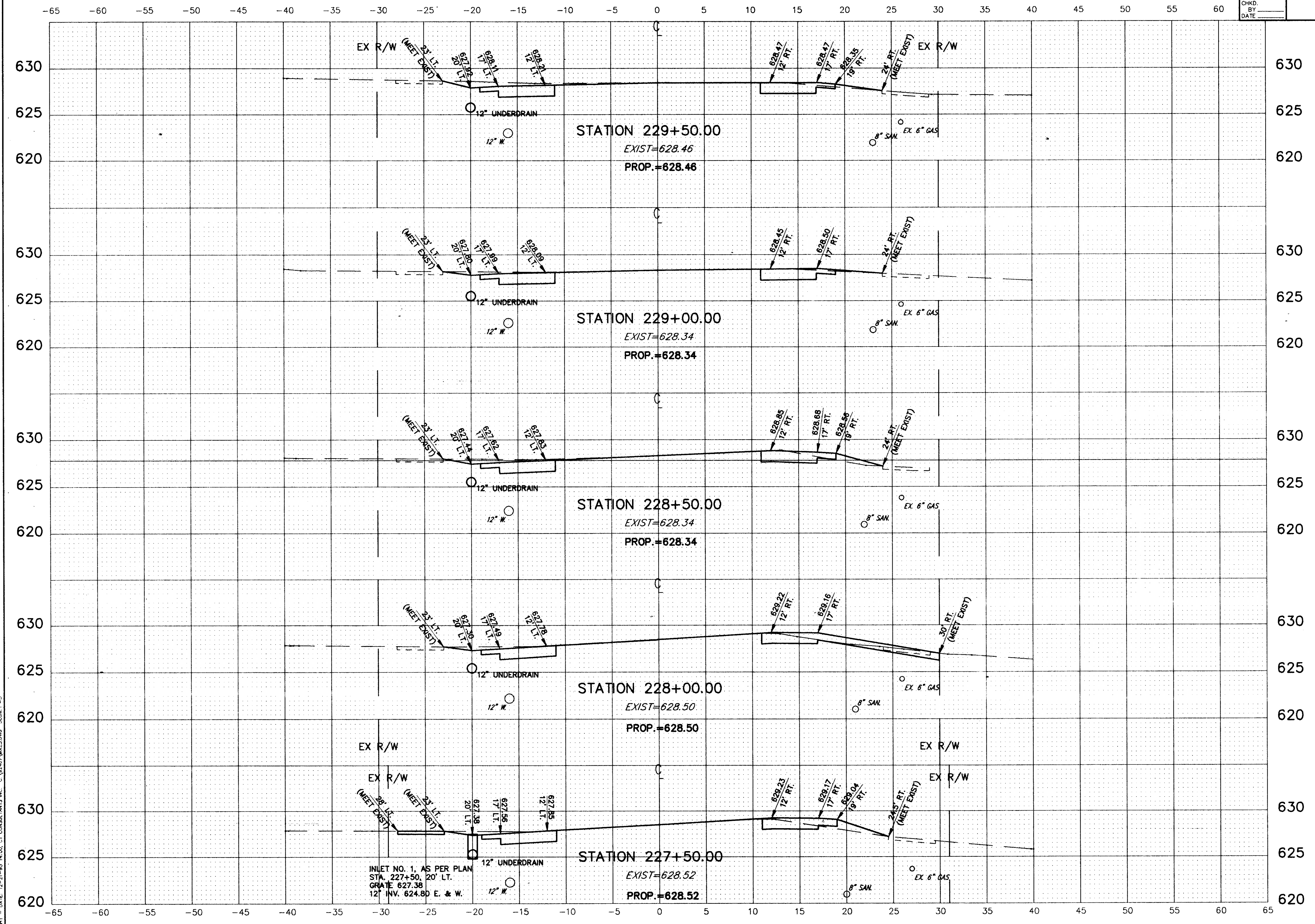


CALC. BY _____
 DATE _____
 CHKD. BY _____
 DATE _____

LAK - 283 - 7.97

OHIO
 FHWA REGION 5
 57
 104



INLET NO. 1, AS PER PLAN
 STA. 227+50.00, 20' LT.
 GRATE 627.38
 12" INV. 624.80 E. & W.

CROSS SECTIONS STA. 227+50 TO STA. 229+50

COPYRIGHT - DATE 12-21-95 14:00 CT CONSULTANTS INC. C:\92467\W23.DWG Scale:1"=5'