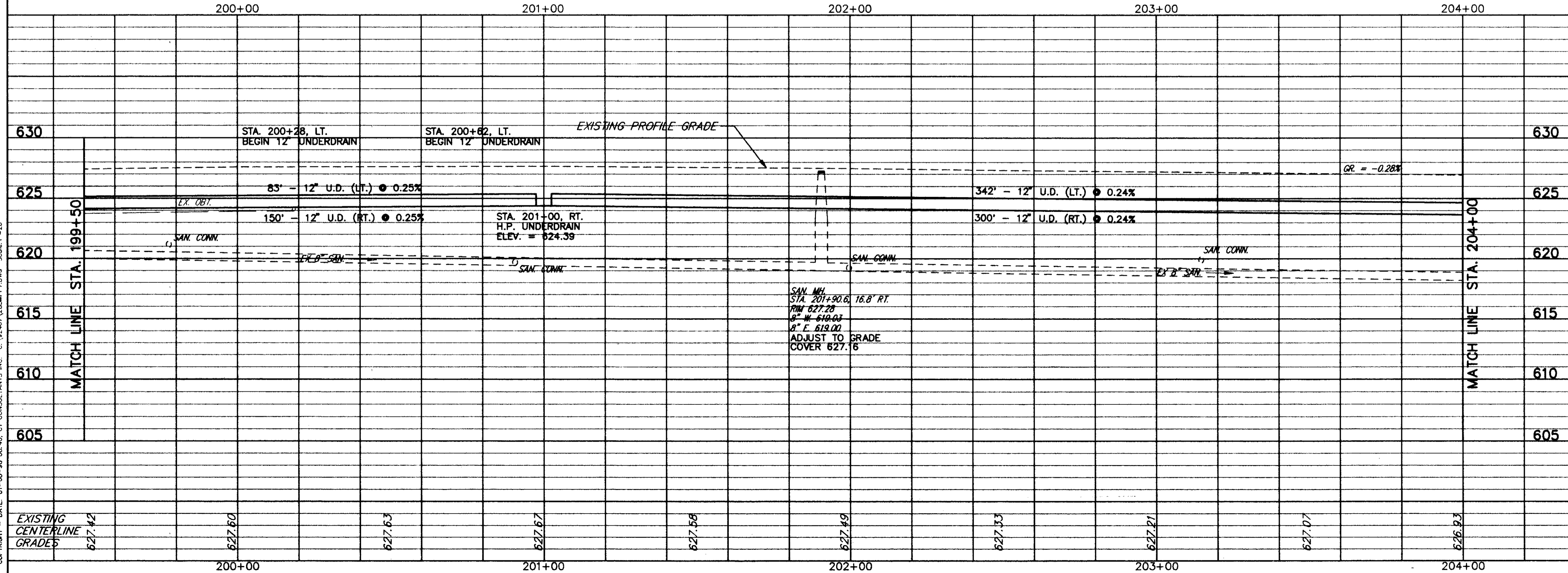


FOR TYPICAL SECTIONS SEE SHEETS 3 THRU 6
 FOR BENCHMARKS SEE GENERAL NOTE SHEET 7
 FOR CROSS-SECTIONS SEE SHEETS 34 THRU 73
 FOR DRIVEWAY SCHEDULE & DETAILS SEE SHEET 79 & 80
 FOR PAVEMENT DETAILS SEE SHEET 81
 FOR TRAFFIC CONTROL DETAILS SEE SHEETS 84 THRU 104

ITEM NO.	DESCRIPTION	UNIT	QUANTITY	UNIT PRICE	TOTAL
609	CURB, TYPE 6	LN. FT.	84		
448	1-1/4" ASPH. CONC. SURFACE COURSE, TYPE 1, PG64-22	CU. YD.	3.1	42.9	133.0
448	0" MIN. ASPH. CONC. INTERMEDIATE COURSE, TYPE 1, PG64-22	CU. YD.	17.2	20.0	344.0
448	1-3/4" ASPH. CONC. INTERMEDIATE COURSE, TYPE 2, PG64-22	CU. YD.	4.4	14.9	65.6
408	BITUMINOUS PRIME COAT (0.40 GAL./SQ.YD.)	SQ. YD.	36.0	17.2	619.2
407	TACK COAT (0.05 GAL./SQ.YD.)	SQ. YD.	4.5	28.8	129.6
407	TACK COAT (0.10 GAL./SQ.YD.)	SQ. YD.	123.6	21.4	2645.0
304	4" AGGREGATE BASE, AS PER PLAN	CU. YD.	10.0	63.9	639.0
301	7" BITUMINOUS AGGREGATE BASE, PG64-22	CU. YD.	17.6	83.4	1467.8
254	1 1/4" PAVEMENT PLANNING BITUMINOUS	SQ. YD.	123.6	47.6	5883.6
203	SUBGRADE COMPACTION	SQ. YD.	90.5	57.0	5158.5
203	EXCAVATION NOT INCLUDING EMBANKMENT CONSTRUCTION	CU. YD.	35.2	166.8	5871.4
TOTALS					4255.0

REF	LOCATION	SQ. FT.	LN. FT.	LN. FT.	LN. FT.	LN. FT.
P-1	STA. 199+50 TO 200+29, LT. = 815 S.F.					
P-2	STA. 199+50 TO 204+00, LT. & RT. = 11125 S.F.					
P-3	STA. 199+50 TO 204+00, RT. = 5175 S.F.					
P-4	STA. 200+60 TO 204+00, LT. = 3860 S.F.					
P-5	STA. 203+70, 33' LT. TO 203+54, 29' LT.					
P-6	STA. 203+74, 29' LT. TO 204+00, 33' LT.					
TOTALS						



REF	LOCATION	SQ. FT.	LN. FT.	LN. FT.	LN. FT.	LN. FT.
R-1	STA. 199+50 RT. TO STA. 204+00 RT. = 376 L.F. *	2250				2256
R-2	STA. 199+50 LT. TO STA. 200+21 LT.	340				390
R-3	STA. 200+02 RT. TO STA. 200+16 RT.			15		
R-4	STA. 200+66 LT. TO STA. 204+00 LT. = 311 L.F. *	1602				1866
R-5	STA. 203+30 LT. TO STA. 203+52 LT.			22		
R-6	STA. 203+77 LT. TO STA. 204+00 LT.			23		
R-7	STA. 200+36, 29' RT. TO STA. 200+38, 40' RT.		12			12
R-8	STA. 200+68, 40' RT. TO STA. 200+70, 29' RT.		12			12
TOTALS		4192	24	60	4512	2

REF	LOCATION	EACH	LN. FT.
S-1	STA. 201+90.6, 16.8' RT.	1	
D-1	STA. 199+50 TO STA. 200+28, LT.		83
D-2	STA. 199+50 TO STA. 201+00, RT.		150
D-3	STA. 200+62 TO STA. 204+00, LT.		342
D-4	STA. 201+00 TO STA. 204+00, RT.		300
TOTALS		1	875

PLAN & PROFILE STA. 199+50 TO STA. 204+00