

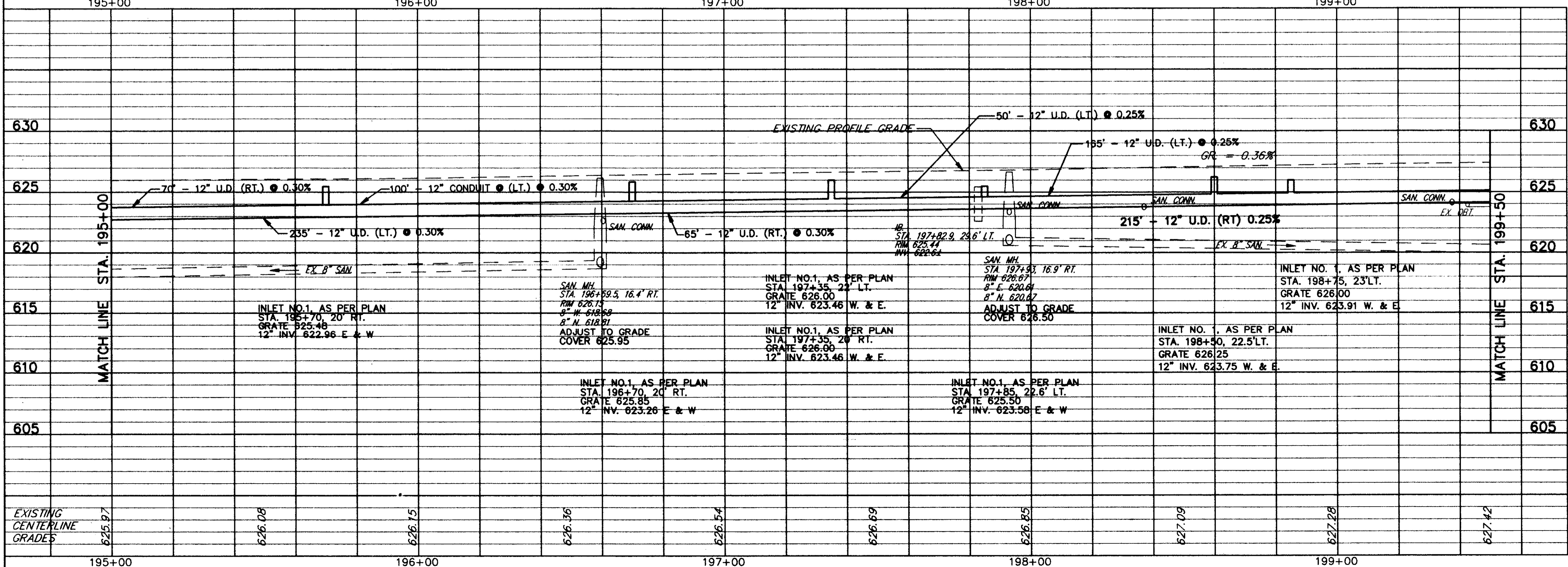
NOTE: DEFLECT UNDERDRAIN PIPE TO AVOID EXISTING UTILITY POLES

RITA A. BUCKER  
 VOL. 686 PG. 303  
 (P.P. No. 16C-080-00-001)

FOR TYPICAL SECTIONS SEE SHEETS 3 THRU 6  
 FOR BENCHMARKS SEE GENERAL NOTE SHEET 7  
 FOR CROSS-SECTIONS SEE SHEETS 34 THRU 73  
 FOR DRIVEWAY SCHEDULE & DETAILS SEE SHEET 79 & 80  
 FOR PAVEMENT DETAILS SEE SHEET 81  
 FOR TRAFFIC CONTROL DETAILS SEE SHEETS 84 THRU 104

ITEM 253 - PAVEMENT REPAIR  
 (SEE DETAIL, SHEET 81)

REF	LOCATION	CU.YD.	SO.YD.	SQ.YD.	CU.YD.	SO.YD.	SQ.YD.	CU.YD.	SO.YD.	SQ.YD.	CU.YD.	SO.YD.	SQ.YD.	TOTALS
609	CURB, TYPE 6													133
448	1-1/4\"/>													
448	0\"/>													
448	1-3/4\"/>													
411	6\"/>													
408	BITUMINOUS PRIME COAT (0.40 GAL./SQ.YD.)													63.1
407	TACK COAT (0.05 GAL./SQ.YD.)													17.6
407	TACK COAT (0.10 GAL./SQ.YD.)													35.6
304	AGGREGATE BASE, AS PER PLAN													126.2
301	7\"/>													
254	1 1/4\"/>													
253	PAVEMENT REPAIR													25.1
203	SUBGRADE COMPACTION													25.1
203	EXCAVATION NOT INCLUDING EMBANKMENT CONSTRUCTION													25.1
	TOTALS	208.9	732.7	33.3	1262.4	142.4	151.5	126.2	35.6	25.1	63.1	17.6	35.6	133



\* LENGTH OF NEW SIDEWALK MINUS AREA THRU DRIVES

REF	LOCATION	SQ.FT.	SQ.FT.
R-1	STA. 195+80 RT. TO STA. 195+87 RT.	32	32
R-2	STA. 196+54 RT. TO STA. 196+61 RT.	32	32
R-3	STA. 198+86 LT. TO STA. 199+50 LT.	288	384
R-4	STA. 198+10 RT. TO STA. 199+50 RT. = 121 L.F.*	605	670
	TOTALS	957	1118

REF	LOCATION	LN.FT.	LN.FT.	EACH	EACH	LN.FT.
D-1	STA. 195+00, 22'LT. TO STA. 197+35, 22'LT.	10	1			225
D-2	STA. 197+35, 22'LT. TO STA. 197+85, 22.6'LT.	20	1			30
D-3	STA. 197+85, 22.6'LT. TO STA. 199+50, 24'LT.	10	1			155
D-4	STA. 195+00, 21'RT. TO STA. 195+70, 20'RT.	10	1			70
D-5	STA. 195+70, 20'RT. TO STA. 196+70, 20'RT.		100	1		
D-6	STA. 196+70, 20'RT. TO STA. 197+35, 20'RT.	20	1			45
D-7	STA. 197+35, 20'RT. TO STA. 199+50, 24'RT.	10	1			205
S-1	STA. 196+59.5, 16.4'RT.				1	
S-2	STA. 197+93, 16.9'RT.				1	
	TOTALS	80	100	7	2	720

PLAN & PROFILE STA. 195+00 TO STA. 199+50