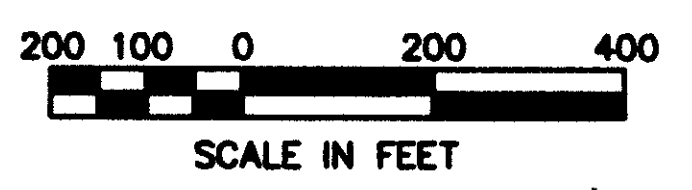


SCHEMATIC PLAN

LAK - 283 - 7.97



CONSTRUCTION CURVE DATA

P.I. STA. 226+38.06
 $\Delta = 124.249^{\circ}$ LT.
 $D_c = 04'00.00''$
 $R = 1432.39'$
 $T = 159.58'$
 $L = 317.84'$
 $E = 8.86'$

CONSTRUCTION & R/W ANGLE POINT
 STA. 209+48.92 = STA. 149+83.45
 DEFLECTION ANGLE
 $\Delta = 071.54^{\circ}$ RT

P.I. STA. 242+19.64
 DEFLECTION ANGLE
 $\Delta = 100.43^{\circ}$ LT

P.I. STA. 232+19.57
 DEFLECTION ANGLE
 $\Delta = 073.54^{\circ}$ LT

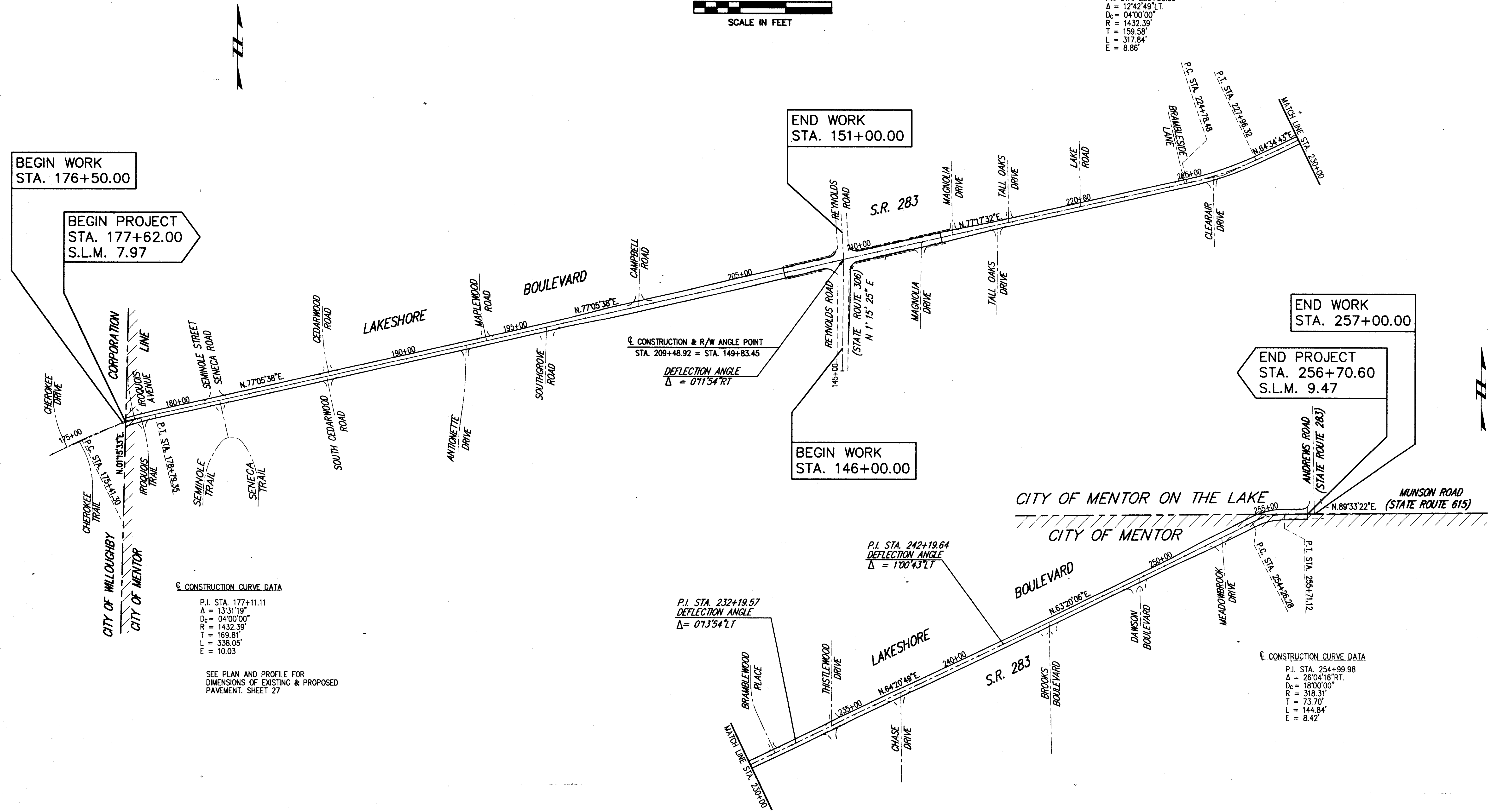
CONSTRUCTION CURVE DATA

P.I. STA. 177+11.11
 $\Delta = 133.119^{\circ}$
 $D_c = 04'00.00''$
 $R = 1432.39'$
 $T = 169.81'$
 $L = 338.05'$
 $E = 10.03'$

CONSTRUCTION CURVE DATA

P.I. STA. 254+99.98
 $\Delta = 26.0416^{\circ}$ RT.
 $D_c = 18'00.00''$
 $R = 318.31'$
 $T = 73.70'$
 $L = 144.84'$
 $E = 8.42'$

SEE PLAN AND PROFILE FOR DIMENSIONS OF EXISTING & PROPOSED PAVEMENT. SHEET 27



COPYRIGHT - DATE 01-08-96 08:50 CT CONSULTANTS, INC. H. VICTOR MANSCHERLING