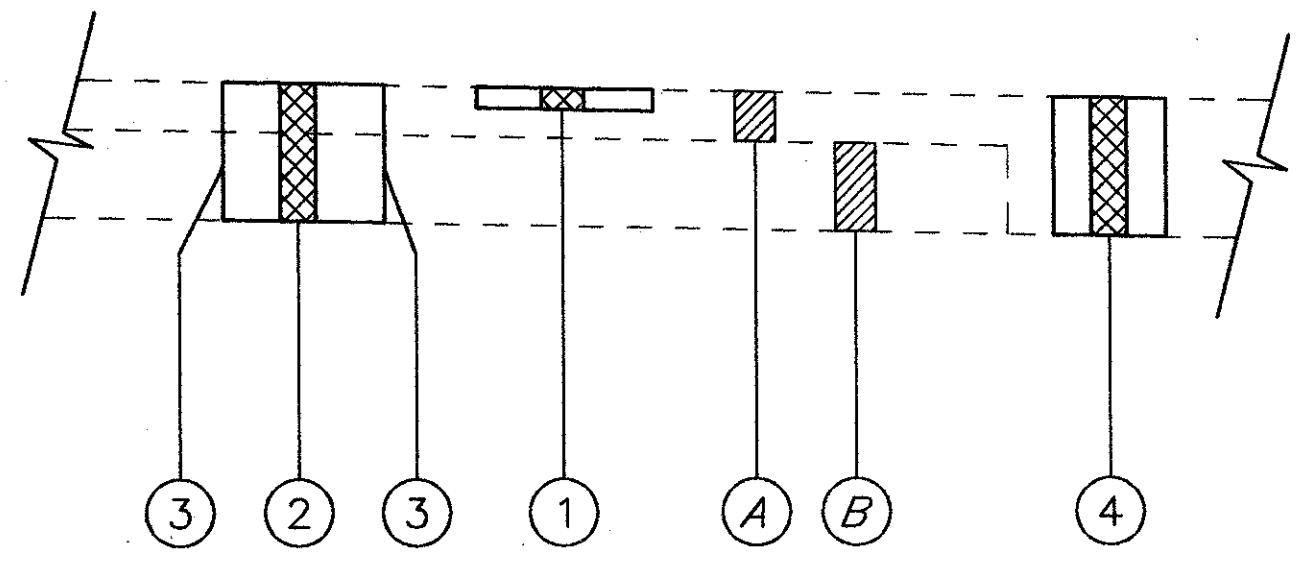


PAVEMENT DETAILS

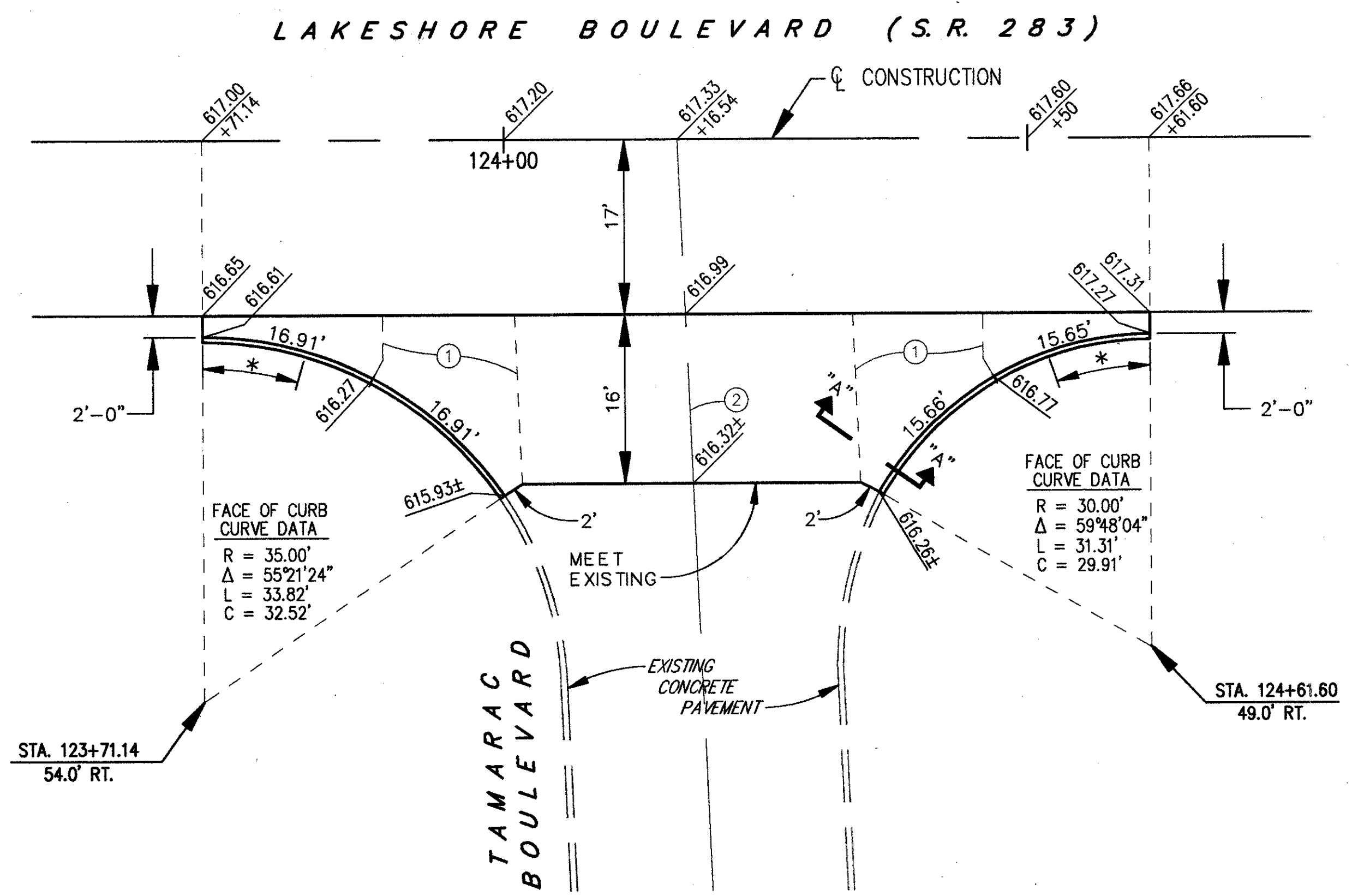


- (A) EXISTING ASPHALT CONCRETE (THICKNESS VARIES)
- (B) EXISTING CONCRETE BASE (THICKNESS VARIES)
- (1) ITEM 251 - PARTIAL DEPTH PAVEMENT REPAIR
- (2) ITEM 252 - FULL DEPTH RIGID PAVEMENT REMOVAL & FLEXIBLE REPLACEMENT
- (3) ITEM 252 - FULL DEPTH PAVEMENT SAWING
- (4) ITEM 253 - PAVEMENT REPAIR

NOTE: FULL DEPTH PAVEMENT REMOVAL AND FLEXIBLE REPLACEMENT AND FULL DEPTH PAVEMENT SAWING WILL ONLY BE IN SECTIONS WITH CONCRETE BASE. PAVEMENT REPAIR WILL BE IN ALL OTHER AREAS.

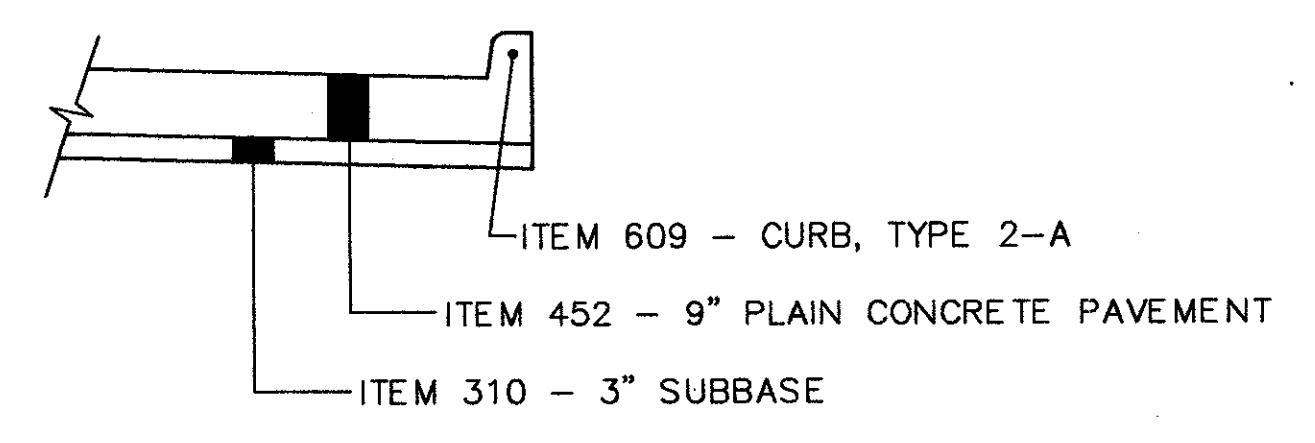
FOR CONTINGENCY QUANTITIES SEE GENERAL NOTE SHEET 5.

TYPICAL PAVEMENT REPAIR DETAIL

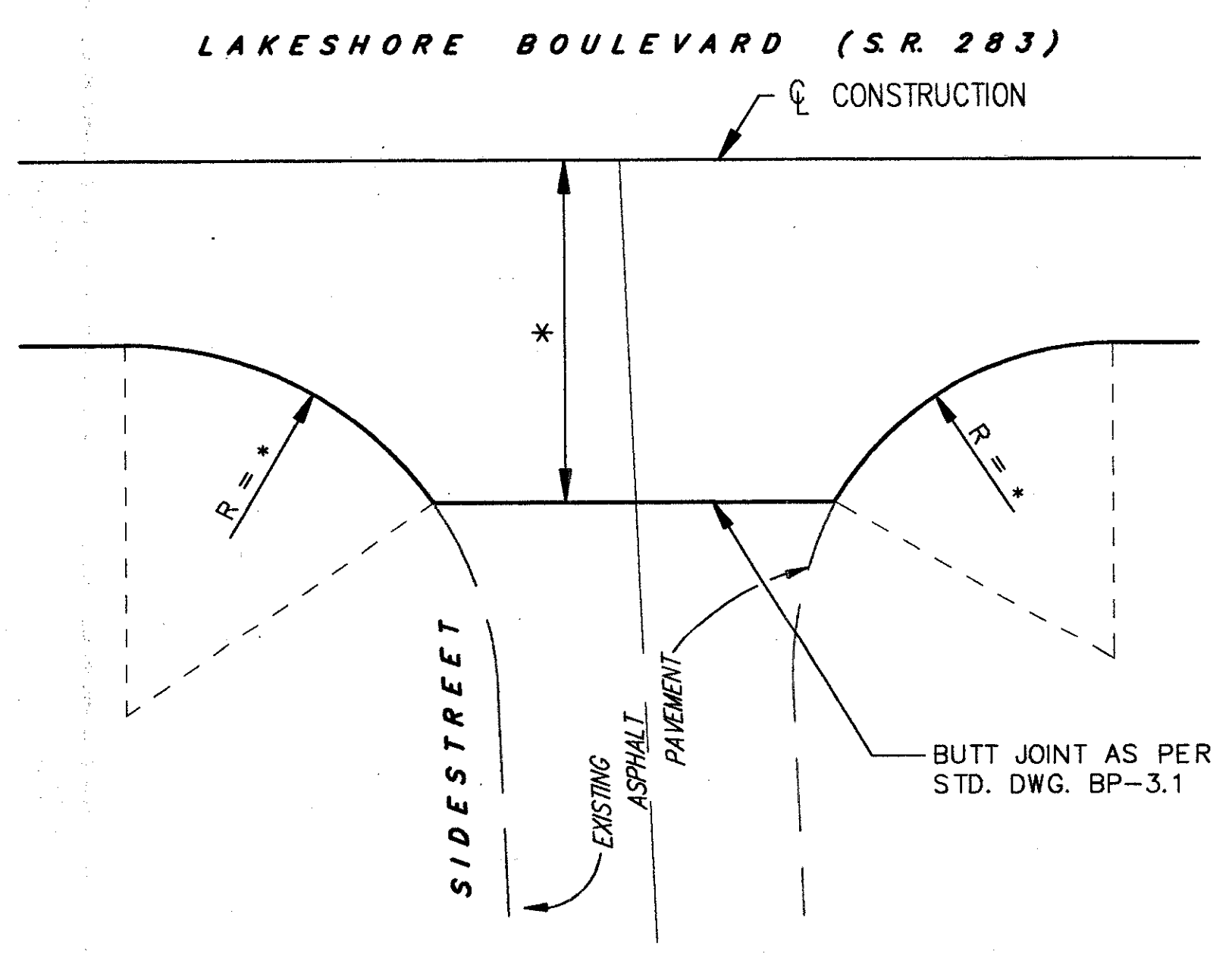


- (1) STANDARD LONGITUDINAL JOINT
- (2) LONGITUDINAL JOINT WITHOUT TIEBARS

* NOTE: TAPER CURB HEIGHT FROM 6" TO 0" IN 10'-0".



TAMARAC BOULEVARD INTERSECTION DETAIL



* AS SHOWN ON PLAN & PROFILE SHEETS

TYPICAL ASPHALT SIDE STREET INTERSECTION

UNIFORM PAVING PLS. 1"=10'