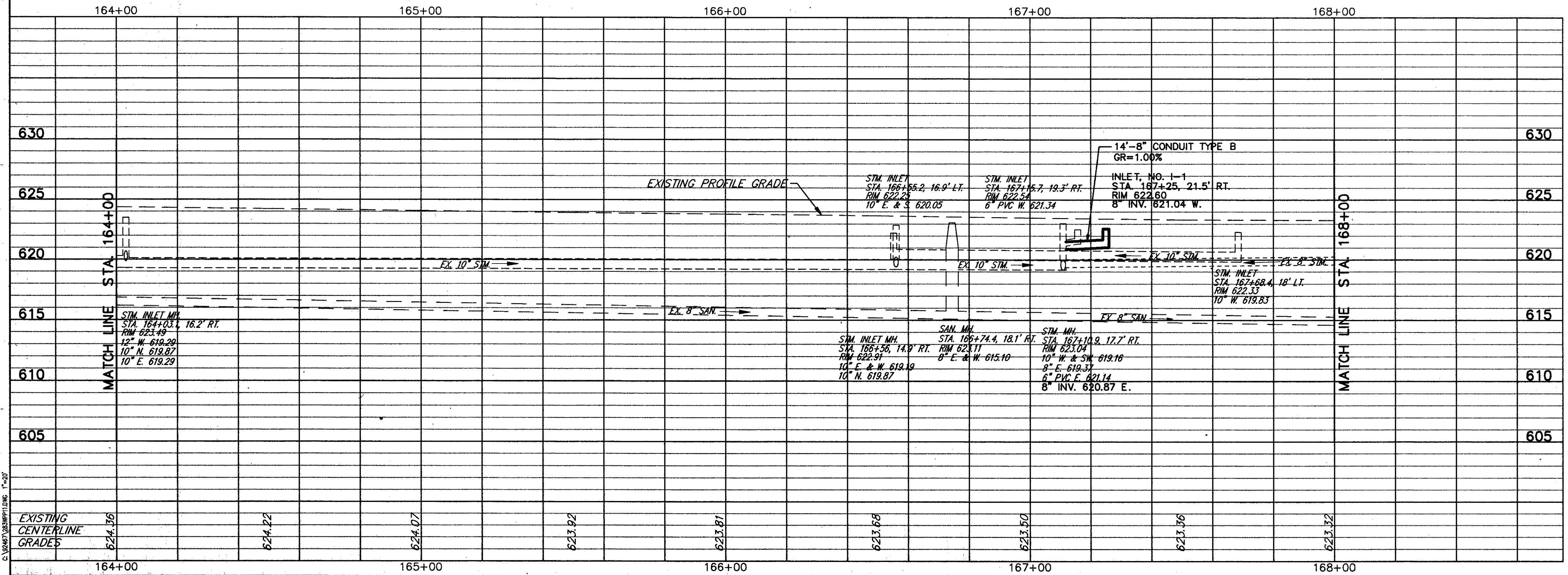


FOR TYPICAL SECTIONS SEE SHEET 3  
 FOR BENCHMARKS SEE GENERAL NOTE SHEET 4  
 FOR CROSS-SECTIONS SEE SHEETS 45 THRU 46  
 FOR DRIVEWAY SCHEDULE & DETAILS SEE SHEET 53  
 FOR PAVEMENT DETAILS SEE SHEET 54  
 FOR TRAFFIC CONTROL DETAILS SEE SHEETS 55 THRU 57  
 FOR WATERWORK DETAILS SEE SHEET 58

ITEM NO.	DESCRIPTION	UNIT	QUANTITY	UNIT PRICE	TOTAL
203	EXCAVATION, NOT INCLUDING EMBANKMENT CONSTRUCTION	CU.YD.	70		1371
254	1-1/4\"/>				

REF	LOCATION	CU.YD.	SQ.YD.	CU.YD.	SQ.YD.	CU.YD.	SQ.YD.	CU.YD.	SQ.YD.	CU.YD.	SQ.YD.	TOTALS								
P-1	STA. 164+00 TO 168+00, LT. & RT. = 16,035 S.F.																			
P-2	STA. 164+00 TO GARDEN RD., RT. = 1615 S.F.																			
P-3	GARDEN RD. TO STA. 168+00, RT. = 513 S.F.																			
P-4	STA. 164+00 TO ORCHARD RD., LT. = 191 S.F.																			
P-5	ORCHARD RD. TO CHESTNUT RD., LT. = 1208 S.F.																			
P-6	BIRCHWOOD DR. TO STA. 168+00, LT. = 160 S.F.																			
<b>TOTALS</b>												61.9	19.0	20.0	79.9	45.5	178	410	20.2	1371



ROADWAY			
REF	LOCATION	SQ.FT.	SQ.FT. EACH
R-1	STA. 164+36.8 TO ORCHARD RD., LT.	35	35
R-2	ORCHARD RD. TO STA. 164+89.5, LT.	28	27
R-3	STA. 166+38.3 TO GARDEN RD., RT.	41	41
R-4	GARDEN RD. TO STA. 167+10.4, RT.	32	33
R-5	STA. 166+86.2 TO CHESTNUT RD., LT.	39	36
R-6	STA. 167+25.3 TO 167+40.1, LT.	73	85
R-7	BIRCHWOOD DR. TO STA. 167+78.2, LT.	32	30
<b>TOTALS</b>		280	287

DRAINAGE					
REF	LOCATION	LIN.FT.	LIN.FT. EACH	EACH	EACH
D-1	STA. 164+06, 23' LT. TO 164+05.5, 17' LT.	6	1		
D-2	STA. 166+55, 23' LT. TO 166+55.2, 16.9' LT.	6	1		
D-3	STA. 164+03, 22' RT. TO 164+03.1, 16.2' RT.	6	1		
D-4	STA. 166+52, 22' RT. TO 166+56, 14.9' RT.	8	1		
D-5	STA. 167+10.9, 17.7' RT. TO 167+25, 21.5' RT.	14	1		
D-6	STA. 167+10.9, 17.7' RT.				1
D-7	STA. 167+68.4, 18' LT.				1
D-8	STA. 166+74.4, 18.1' LT.				1
<b>TOTALS</b>		14	26	5	4

PLAN & PROFILE STA. 164+00 TO STA. 168+00