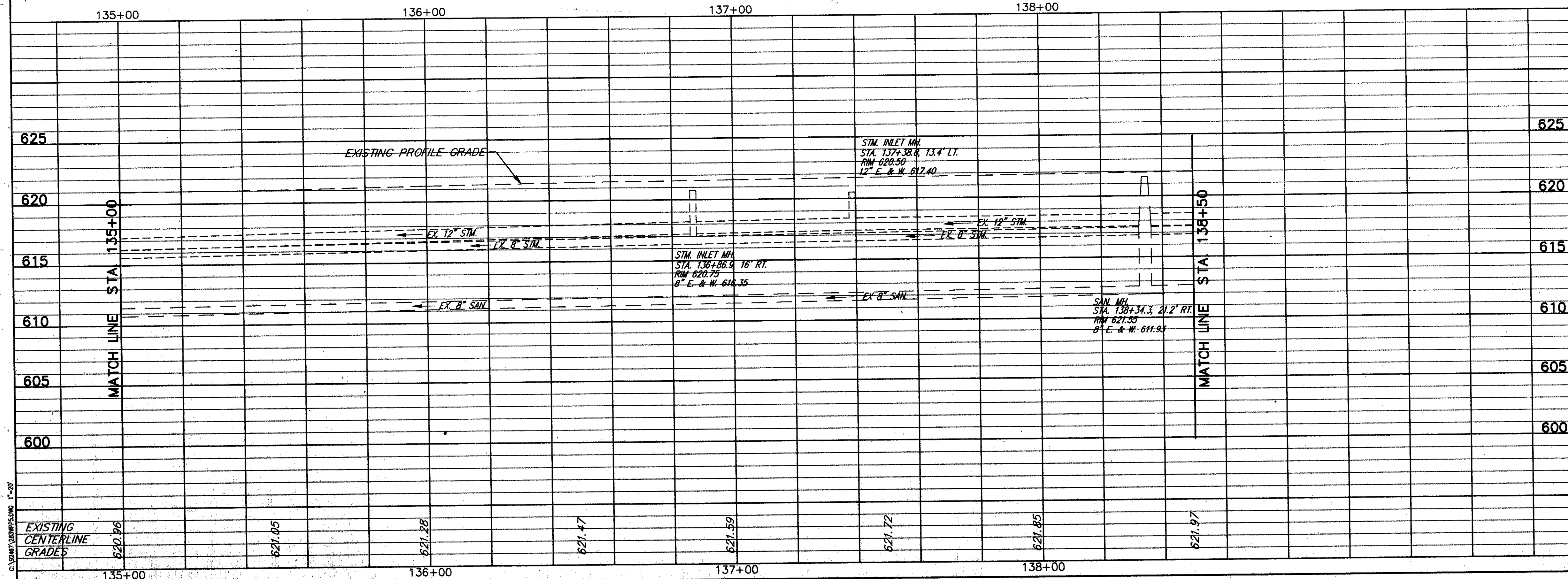


FOR TYPICAL SECTIONS SEE SHEET 3  
 FOR BENCHMARKS SEE GENERAL NOTE SHEET 4  
 FOR CROSS-SECTIONS SEE SHEETS 35 THRU 37  
 FOR DRIVEWAY SCHEDULE & DETAILS SEE SHEET 53  
 FOR PAVEMENT DETAILS SEE SHEET 54  
 FOR TRAFFIC CONTROL DETAILS SEE SHEETS 55 THRU 57  
 FOR WATERWORK DETAILS SEE SHEET 58

ITEM NO.	DESCRIPTION	CU.YD.	SQ.YD.	EA.	TOTALS
203	EXCAVATION, NOT INCLUDING EMBANKMENT CONSTRUCTION				156
254	1-1/4" PAVEMENT PLANING, BITUMINOUS	984			984
411	6" STABILIZED CRUSHED AGGREGATE				
203	SUBGRADE COMPACTION				
407	TACK COAT (@ 0.10 GAL./SQ.YD.)	140			140
304	4" AGGREGATE BASE				
301	7" BITUMINOUS AGGREGATE BASE, AC-20				
402	1-3/4" ASPHALT CONCRETE, AC-20				
403	0" MIN. ASPHALT CONCRETE, AC-20 (1/2" AVG.)				
404	1-1/4" ASPHALT CONCRETE, AC-20				
<b>TOTALS</b>		<b>488</b>	<b>13.7</b>	<b>20.4</b>	<b>81.7</b>

REF	LOCATION	CU.YD.	SQ.YD.	EA.	TOTALS
P-1	STA. 135+00 TO 138+50, LT. & RT. = 12,643 SF.				
P-2	STA. 135+00 TO WESTWOOD DR., RT. = 895 SF.				
P-3	STA. 135+00 TO WESTWOOD DR., LT. = 1,207 SF.				
P-4	WESTWOOD DR. TO STA. 138+50, RT. = 988 SF.				
P-5	WESTWOOD DR. TO STA. 138+50, LT. = 895 SF.				
<b>TOTALS</b>		<b>48.8</b>	<b>13.7</b>	<b>20.4</b>	<b>81.7</b>



ROADWAY			
REF	LOCATION	SQ.FT.	EA.
R-1	STA. 136+42.8 TO WESTWOOD DR., RT.	31	37
R-2	WESTWOOD DR. TO STA. 136+90.2, RT.	29	38
R-3	STA. 136+96.7 TO WESTWOOD DR., LT.	38	38
R-4	WESTWOOD DR. TO STA. 137+37.5, LT.	37	34
<b>TOTALS</b>		<b>135</b>	<b>145</b>

DRAINAGE					
REF	LOCATION	EA.	LIN.FT.	LIN.FT.	EA.
D-1	STA. 136+00, 21' LT. TO 13' LT.	1	12	1	
D-2	STA. 137+50, 21' LT. TO 13' LT.	1	12	1	
D-3	STA. 138+43, 21' LT. TO 13' LT.	1	12	1	
D-4	STA. 138+00, 19' RT. TO 16' RT.	1	7	1	
D-5	STA. 136+86.9, 16' RT.				1
D-6	STA. 137+38.8, 13.4' LT.				1
<b>TOTALS</b>		<b>1</b>	<b>3</b>	<b>7</b>	<b>36</b>

PLAN & PROFILE STA. 135+00 TO STA. 138+50