

WATER WORK DETAILS

FED. RD. DIVISION	STATE	PROJECT	
2	OHIO		

6
15

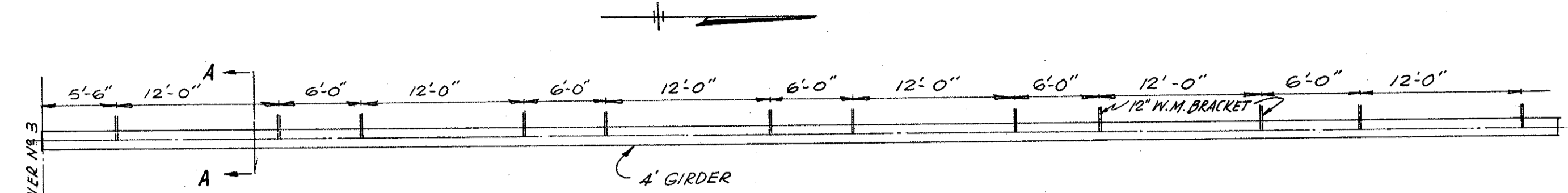
LAKE COUNTY
LAK-283-470

MATERIAL SPECIFICATION

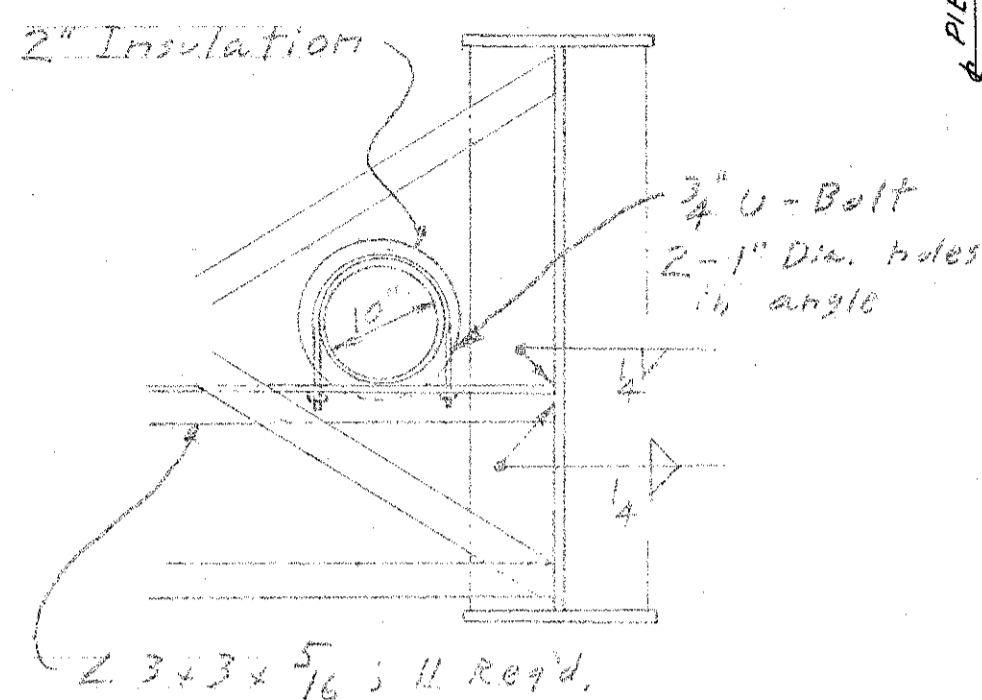
1. CAST IRON PIPE TO BE CLASS 25 CEMENT LINED, MECH. JOINT. WHEN BURIED OUTSIDE ABUTMENT LIMITS (ASA 21.1 AND 21.6)
2. CAST IRON PIPE TO BE CLASS 25 CEMENT LINED BELLS CUT-OFF FROM PIER NO. 3 TO NORTH ABUTMENT (ASA 21.1 AND 21.6) OR EXISTING PIPE REUSED WHERE APPROVED BY CITY ENGINEER.
3. JOINTS WITHIN PIER NO. 3 AND NORTH ABUTMENT AREA TO BE DRESSER STYLE 3B OR SMITH-BLAIR 431
4. INSULATION - TEMP. LIMIT 500°F; MOISTURE ABSORPTION 0.2% OR LESS BY VOL; ALKALINITY 0.6% OR LESS AS NA₂O; CONDUCTIVITY 0.22 BTUH PER SQ. FT. AT 100°F AND 0.19 BTUH PER SQ. FT. AT 0°F; RESIST ALL FUNGI AND BACTERIA; CAPILLARITY NEGLIGIBLE; SHRINKAGE NEGLIGIBLE. JACKET (OUTER COVERING 0.016" ALUMINUM). MATERIAL TO BE JOHNS-MANVILLE 2" MICRO-LOK OR EQUAL. INSULATE JOINTS AS PER MFG. REC.
5. STRUCTURAL STEEL TO BE ASTM A-36 MEETING ALL AISC REQUIREMENTS.
6. Water Work shall be in accordance with the City of Cleveland Water Department Specifications.

WORK DESCRIPTION

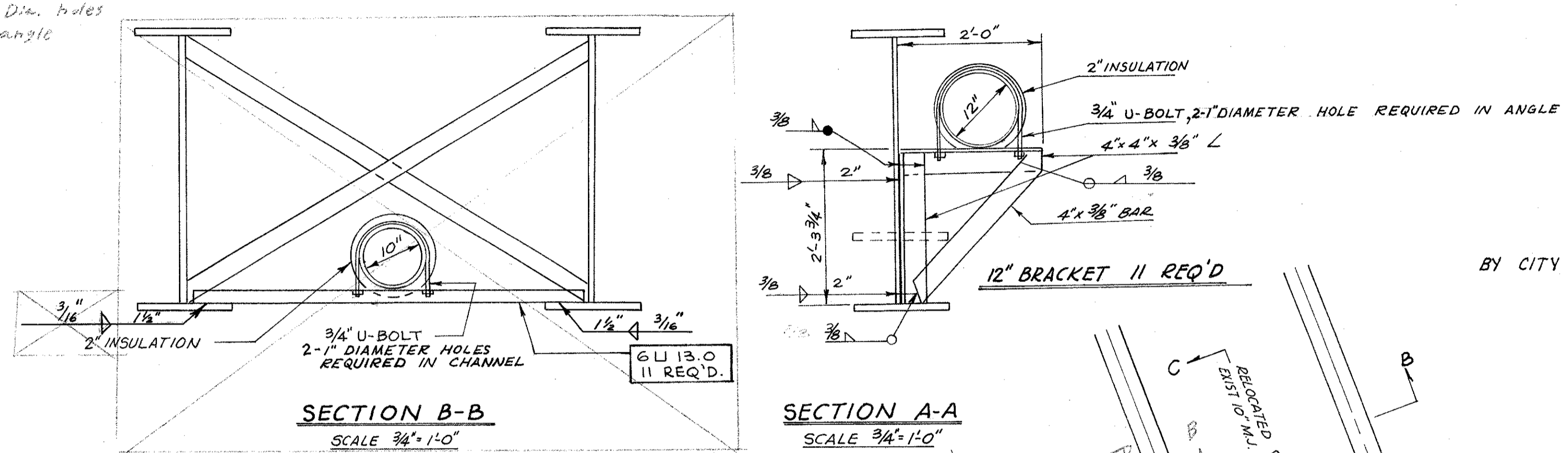
- | | |
|---|---|
| <p>BY CITY OF EASTLAKE</p> <p>BY CONTRACTOR</p> | <ol style="list-style-type: none"> A. 1. CITY OF EASTLAKE TO INSTALL TEMPORARY BYPASS. 2. RECONNECT 10" AND 12" MAINS FROM A POINT 5' NORTH OF NEW NORTH ABUTMENT TO EXISTING MAINS. 3. OPERATE ALL VALVES, TEST AND CHLORINATE. <ol style="list-style-type: none"> B. 1. CONTRACTOR TO REMOVE EXISTING 10" AND 12" LINES AS REQUIRED TO RECONSTRUCT NEW LINES ON BRIDGE. EXISTING PIPE MAY BE SALVAGED AS NOTED IN SPEC. 2. 2. REPLACE 10" AND 12" MAINS TO A POINT 5' NORTH OF NEW NORTH ABUTMENT. 3. REMOVE EXISTING INSULATION AND REINSULATE AS SPECIFIED FROM SOUTH ABUTMENT TO NEW NORTH ABUTMENT ON BOTH 10" AND 12" MAINS. |
|---|---|



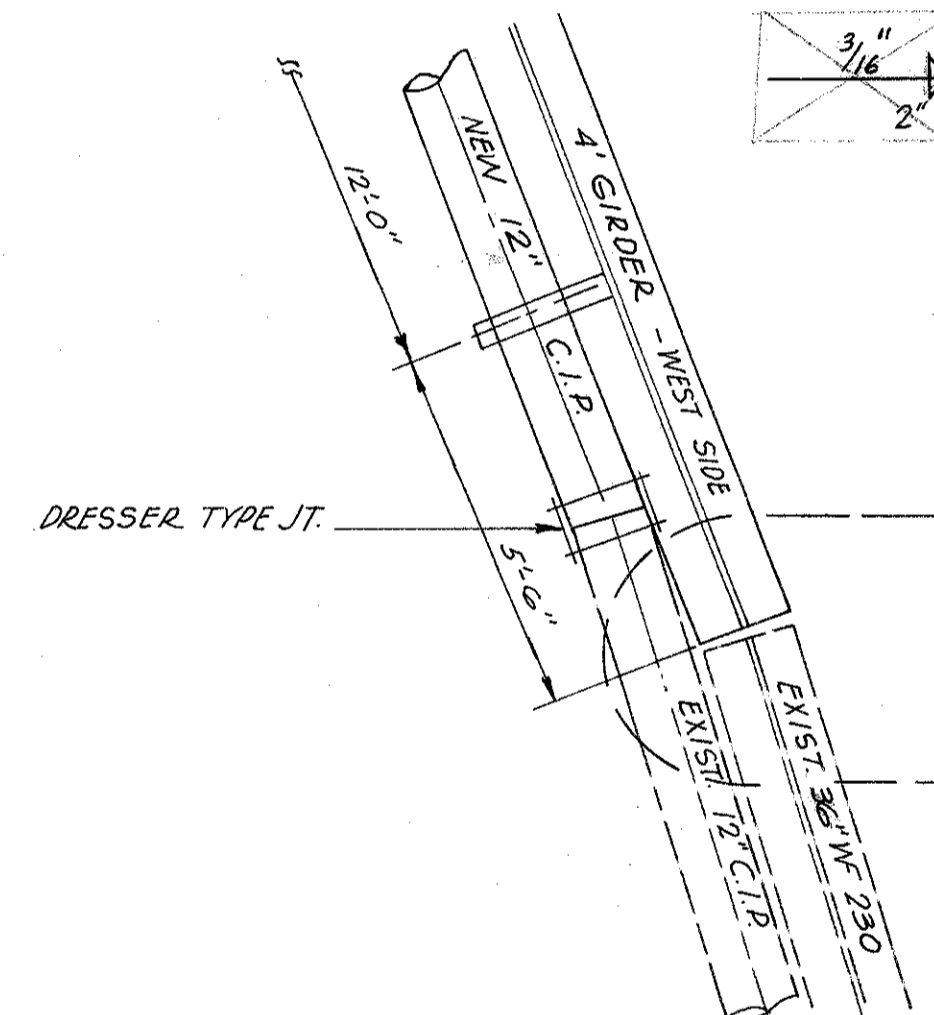
PLAN VIEW WEST GIRDER
LOCATION OF 12" W.M. BRACKETS
SCALE 1/8" = 1'-0"



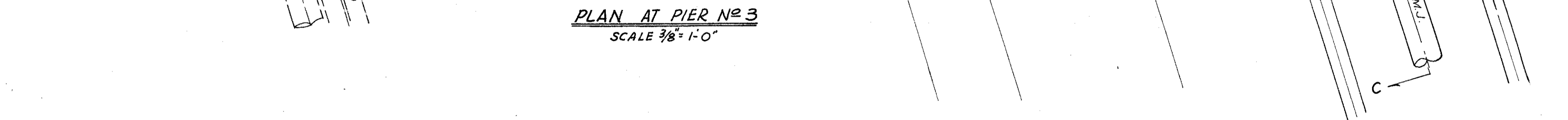
SECTION B-B



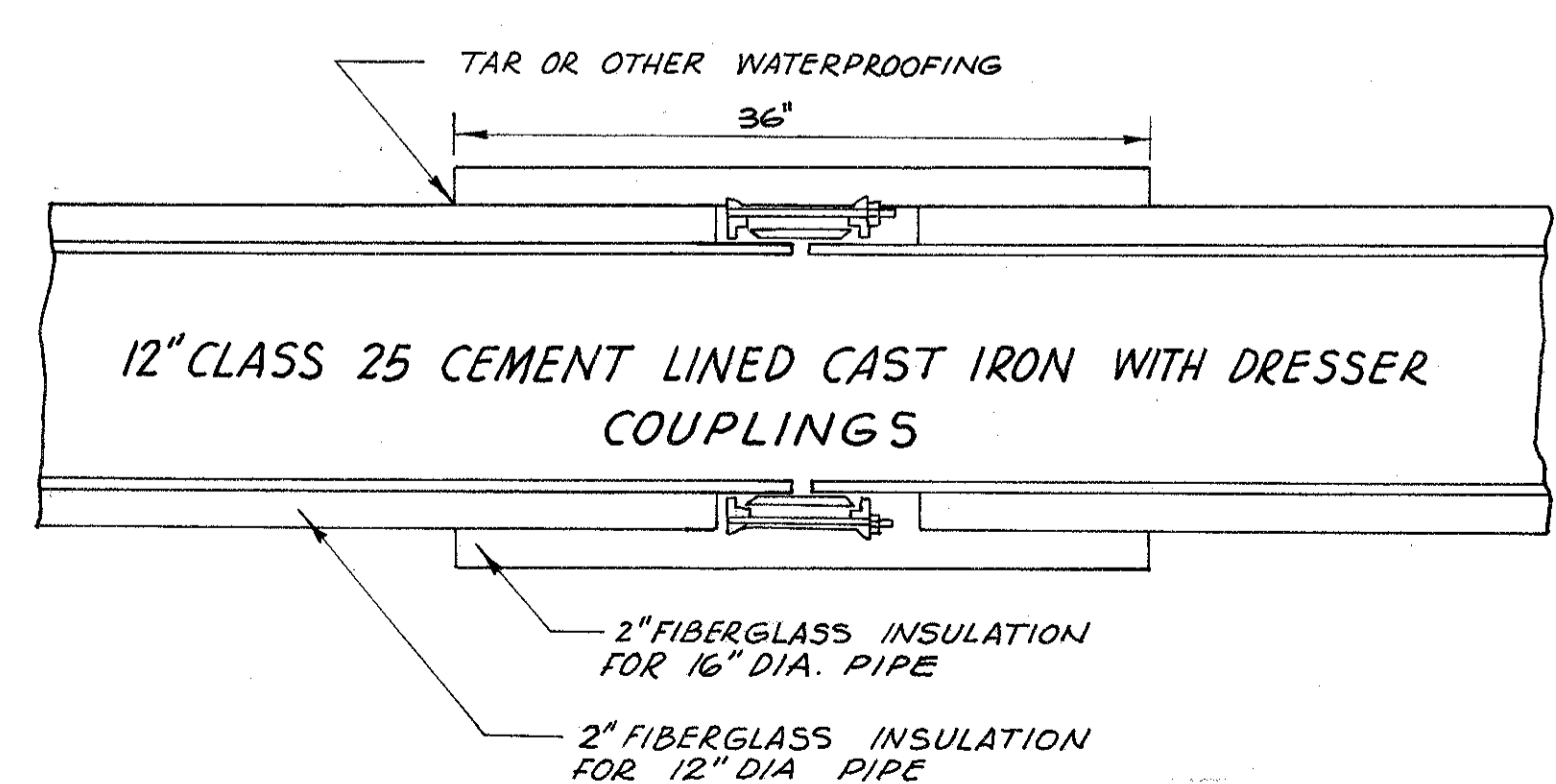
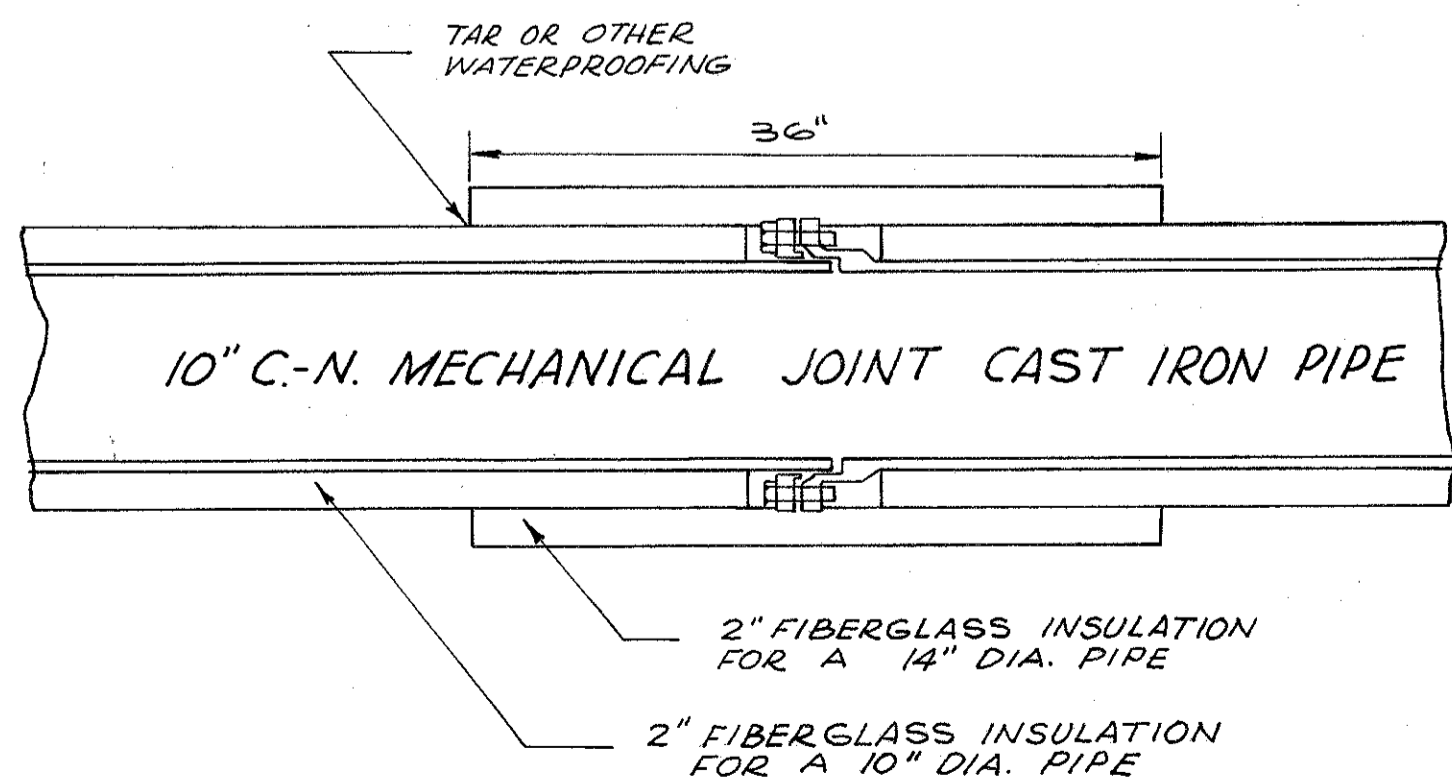
SECTION A-A
SCALE 3/4" = 1'-0"



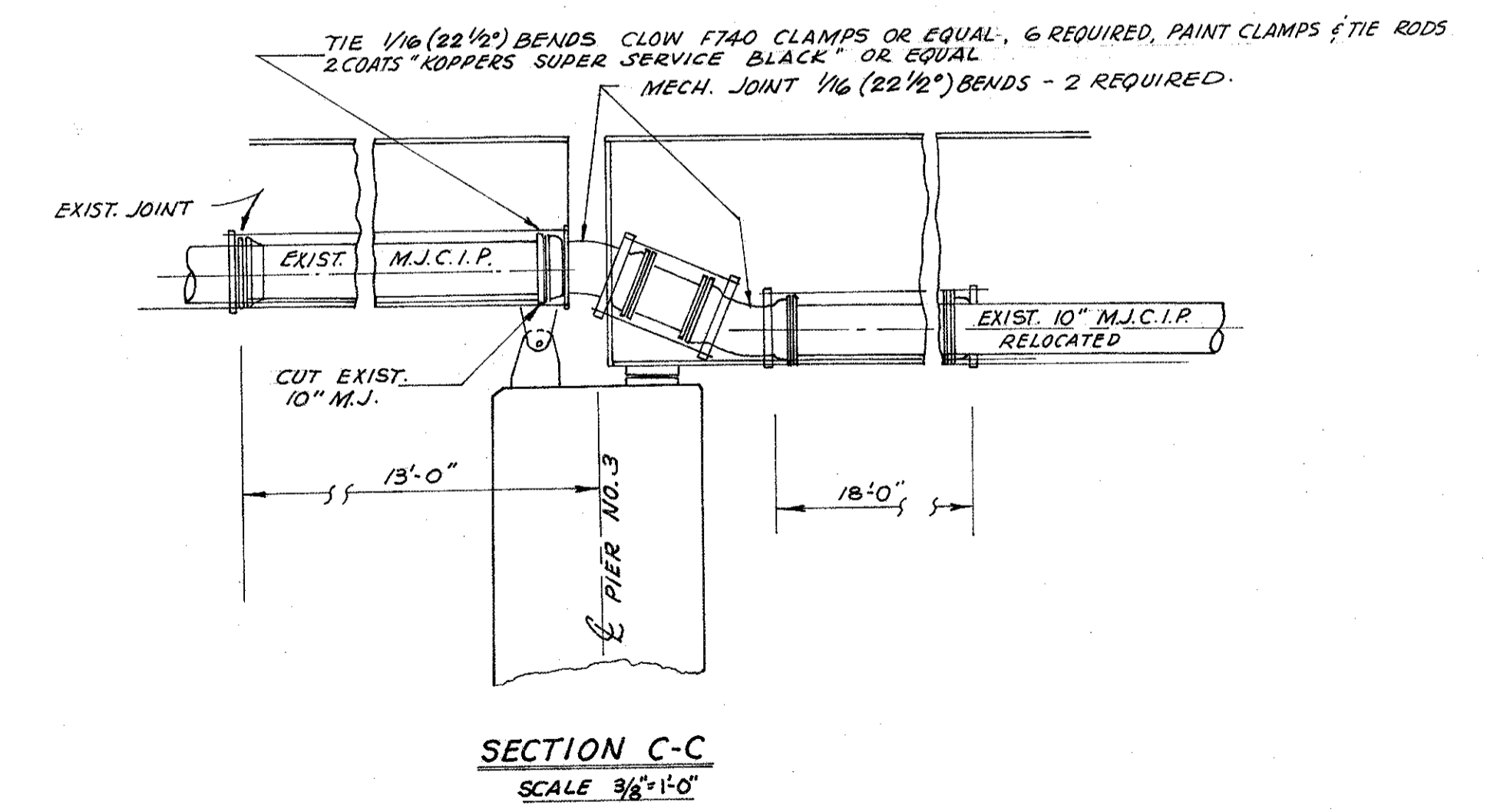
SECTION B-B
SCALE 3/4" = 1'-0"



PLAN AT PIER NO. 3
SCALE 3/8" = 1'-0"



INSULATION DETAIL
SCALE 1" = 10"



SECTION C-C
SCALE 3/8" = 1'-0"

NOTE: SEE SHEET NO. 4 FOR PLAN VIEW

Revised 11-4-70
FPE

BRUNING 44-560 10943