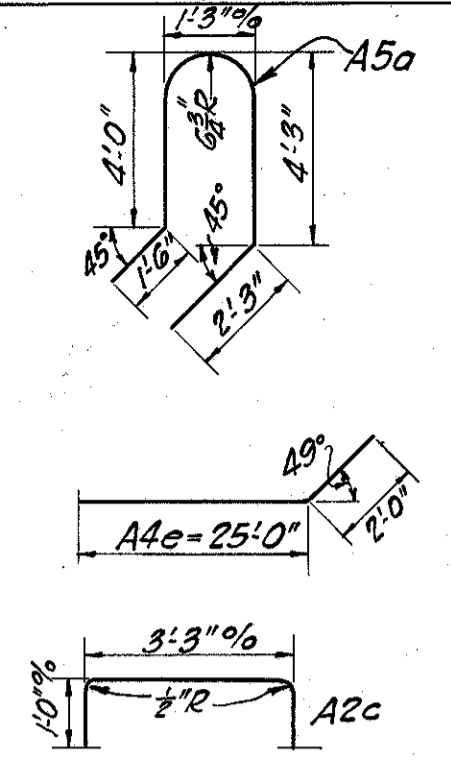


REINFORCING STEEL LIST - SOUTH ABUTMENT

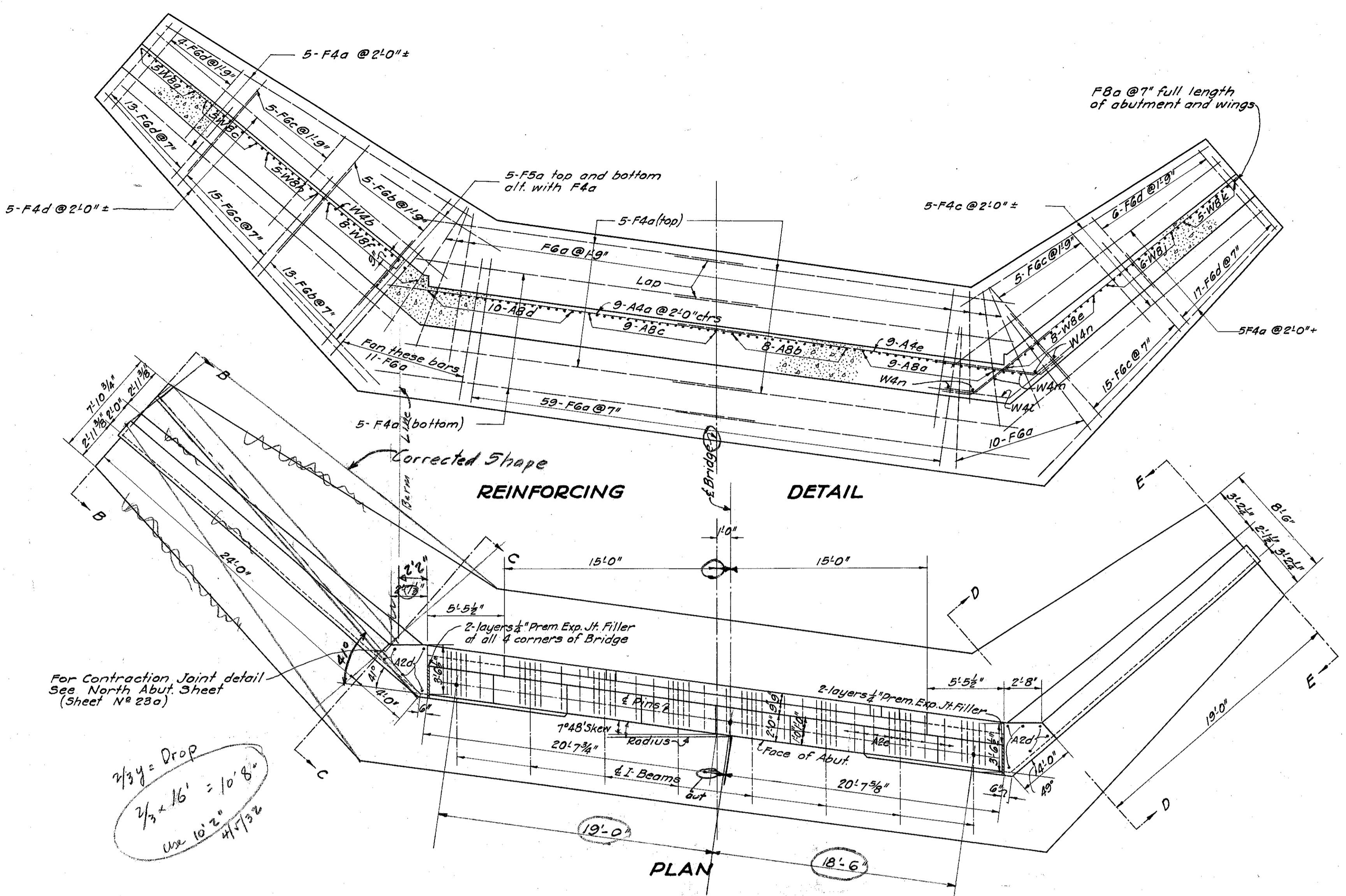
Mark	Size	Shape	Length	No. Each	Weight
A8a	1" Str.		15'9"	9	483
A8b	1" Str.		16'3"	8	442
A8c	1" Str.		16'9"	9	513
A8d	1" Str.		17'6"	10	596
A5a	3/4" Str.		12'9"	42	805
A4a	5/8" Str.		26'6"	9	249
A4e	5/8" Str.		27'0"	16	451
A2a	1/2" Str.		23'0"	8	123
A2b	1/2" Str.		4'0"	8	21
A2c	1/2" Str.		5'9"	54	189
A2d	1/2" Str.		8'1"	11	64
F4a	5/8" Str.		25'0"	30	783
F4c	5/8" Str.		22'0"	5	115
F4d	5/8" Str.		27'6"	5	144
F6a	7/8" Str.		11'2"	106	2422
F6b	7/8" Str.		10'9"	18	396
F6c	7/8" Str.		9'3"	40	757



Mark	Size	Length	No. Each	Weight
F6d	7/8" Str.	7'2"	40	587
F5a	3/4" Str.	10'0"	10	150
F8a	1" Str.	10'0"	155	5280
W8c	1" Str.	14'6"	5	247
W8e	1" Str.	19'3"	8	524
W8f	1" Str.	20'0"	8	545
W8g	1" Str.	11'6"	5	196
W8h	1" Str.	17'6"	5	298
W8j	1" Str.	15'6"	6	317
W8k	1" Str.	13'0"	5	221
W4b	5/8" Str.	23'6"	6	147
W4d	5/8" Str.	13'9"	1	14
W4f	5/8" Str.	19'0"	2	40
W4h	5/8" Str.	5'3"	1	5
W4j	5/8" Str.	24'9"	1	25
W4k	5/8" Str.	13'0"	1	20
W4l	5/8" Str.	12'0"	17	213
W4m	5/8" Str.	9'0"	16	150
W4n	5/8" Str.	16'0"	4	67
Total				17,600

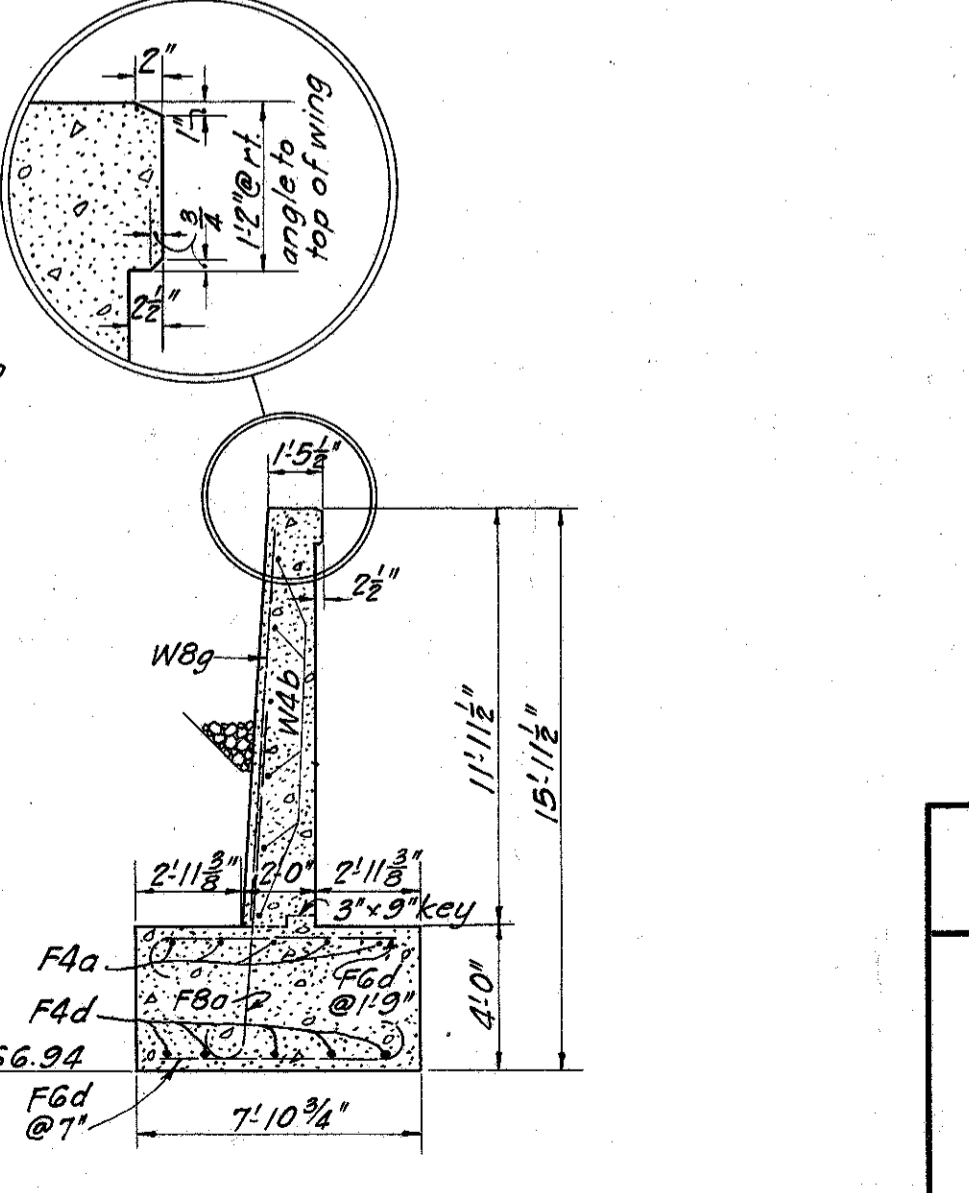
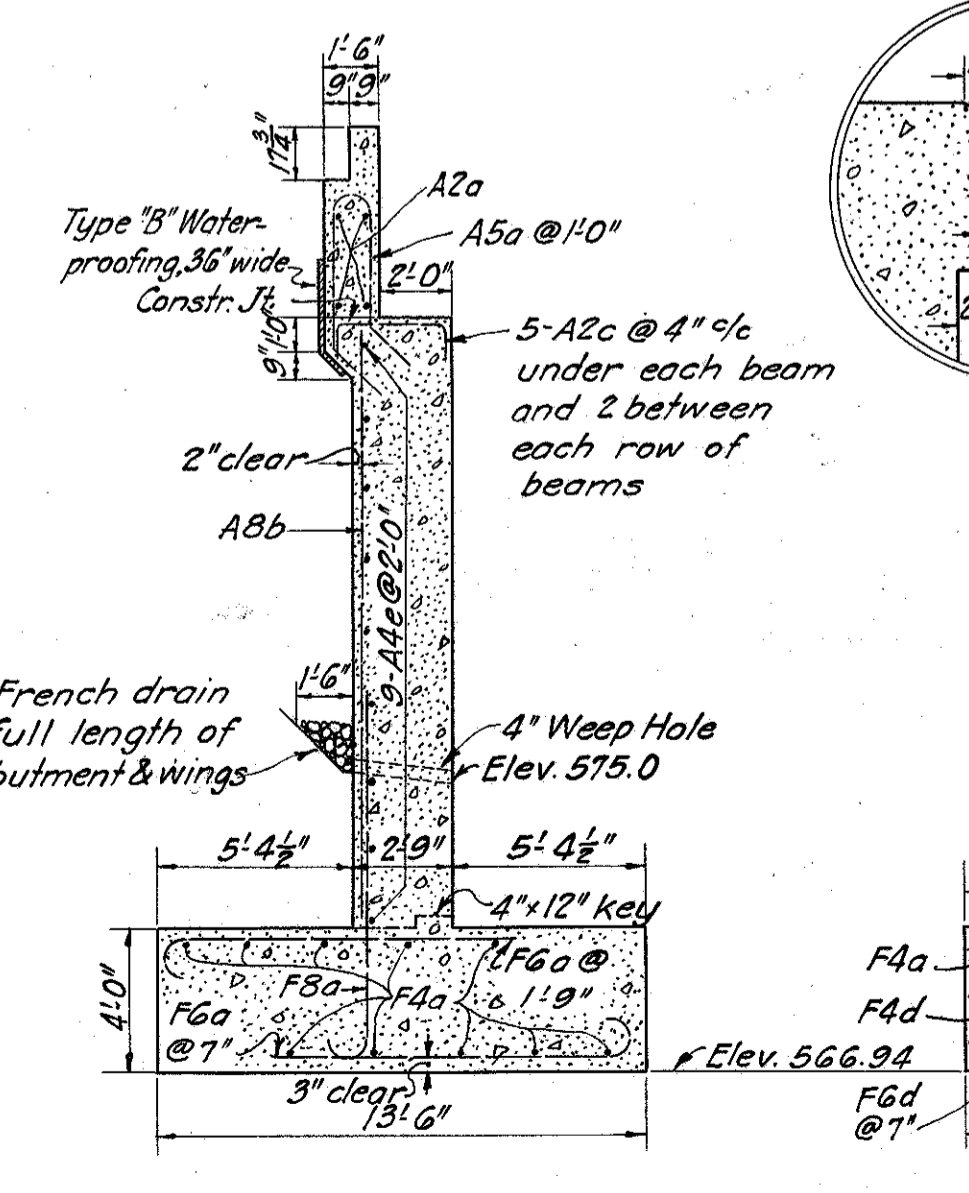
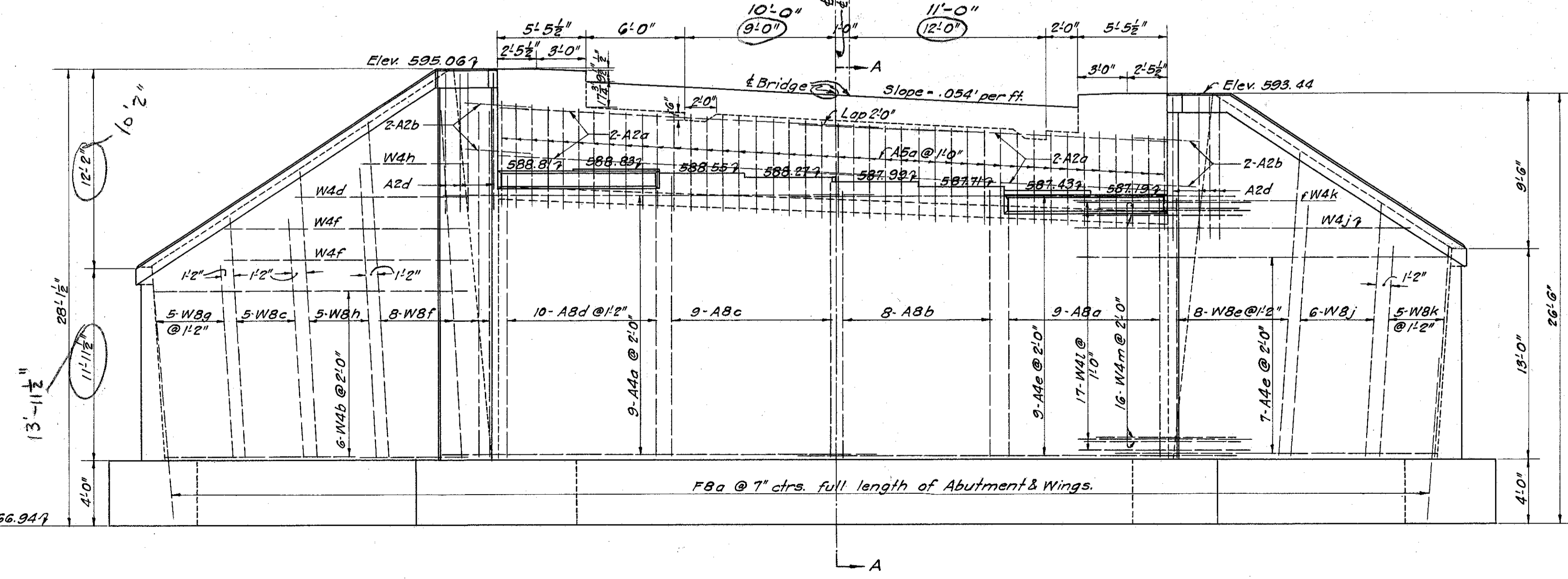
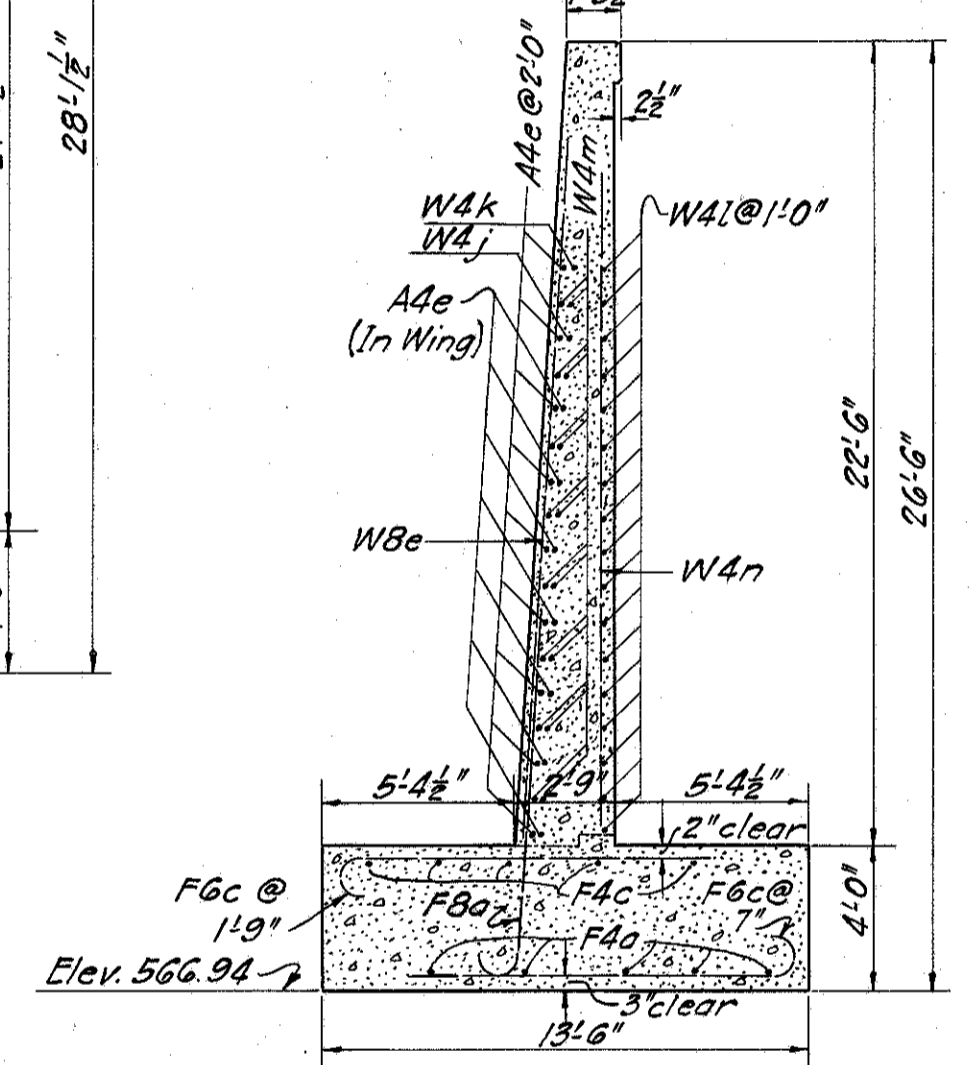
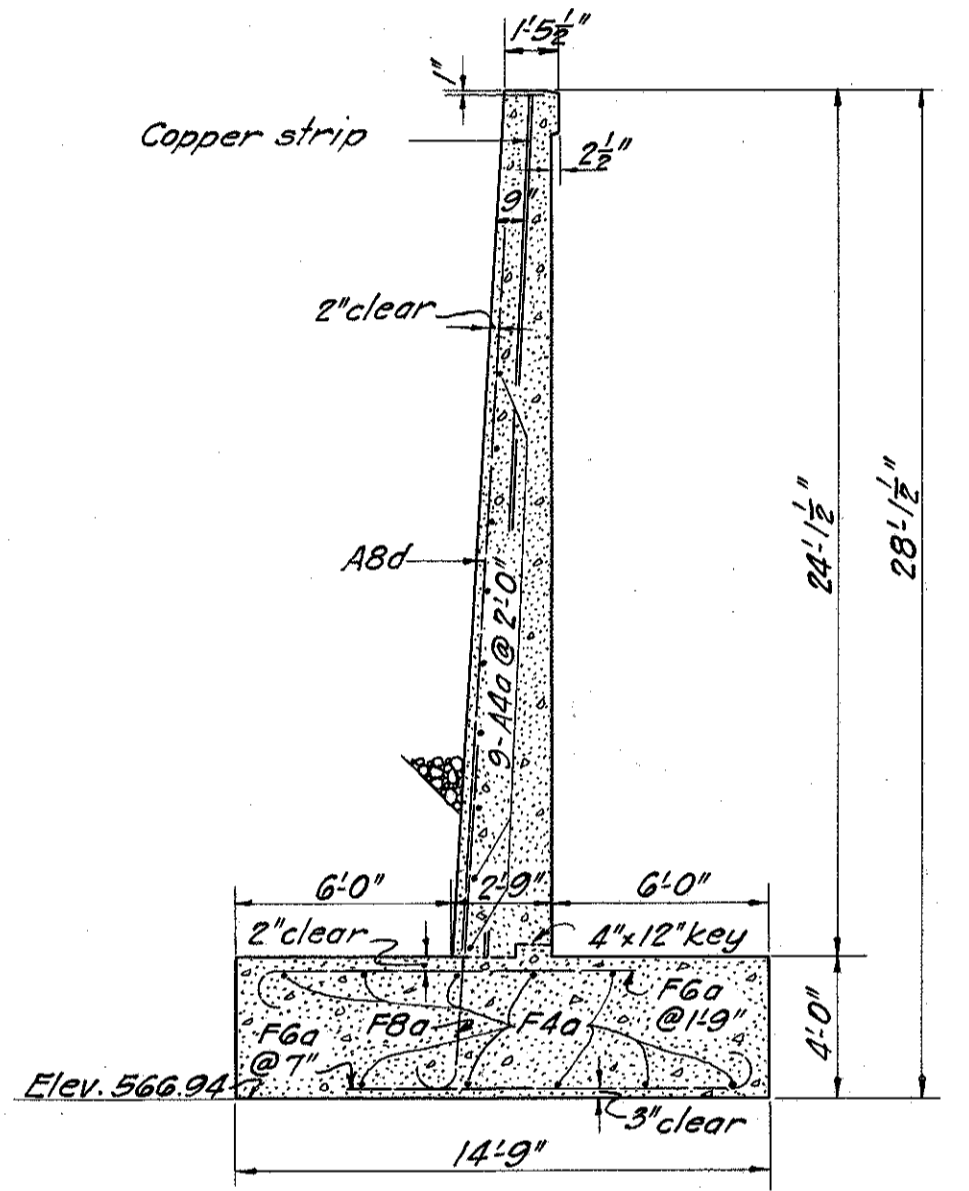
All radii are measured to inside of bar unless otherwise noted.

This is a supplemental sheet in accordance with the note on Sheet 23-a of the original plans.



For Contraction Joint detail See North Abut. Sheet (Sheet No 23a)

2/3 = Drop
2/3 x 16' = 10' 8"
Use 10' 2" 41/732



STATE OF OHIO
DEPARTMENT OF HIGHWAYS
BUREAU OF BRIDGES

SOUTH ABUTMENT DETAILS
BR. NO. LA-283-47
OVER CHAGRIN RIVER
LAKE COUNTY S.H. 520
SEC. B & C BRIDGES STA. 175+70.0

DESIGNED	DRAWN	TRACED	CHECKED	REVIEWED	DATE	REVISED
C. G. H.	C. G. H.	J. P. R. H.	A. G. S.	H. H. G.	1/25/32	3-28-32 4-5-32

4-5-32
Angle of long wing drawn correctly.
Encircled dimensions revised 3-28-32