

Δ = 6° 46'	T = 124.79'	R = 2110.83'	L = 249.29'
------------	-------------	--------------	-------------

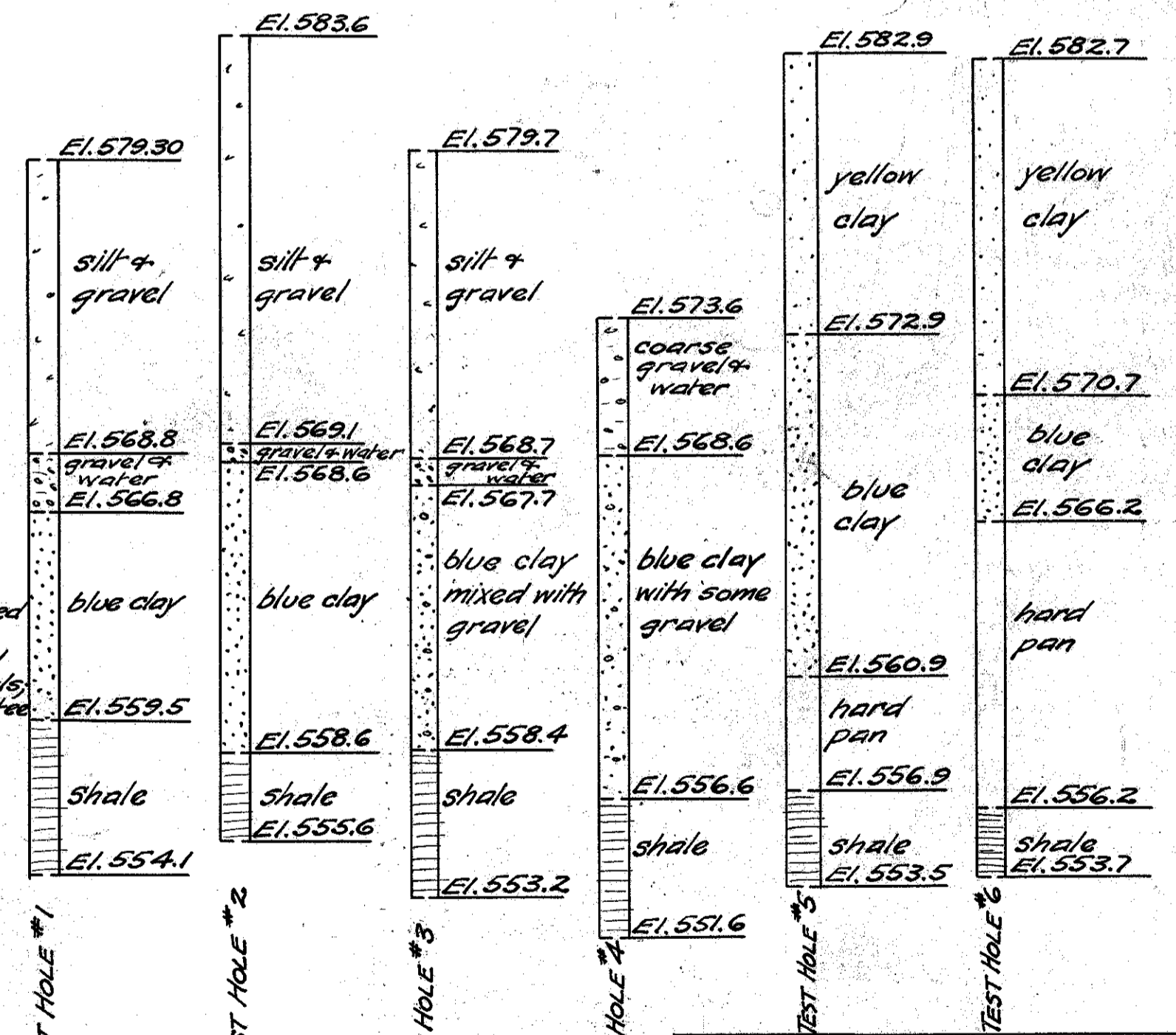
FED. RD. DIST. N <sup>o</sup>	STATE	FED. AID PROJECT	FISC. YEAR
	OHIO		

LAKE COUNTY  
S.H. 520 SEC. B & C BRS.

Δ = 32° 00'	T = 133.08'	R = 464.10'	L = 259.20'
-------------	-------------	-------------	-------------

**NOTE**  
Present bridge (shown in dashed lines) not to be removed, 295' Steel Span-Through truss, fair condition, suitable for Temporary Bridge. Bridge rests on steel caissons 4' Diam. Bridges upstream over Chagrin River: Lost Nation Rd. 194' Span, Glenn Ave. 164' Span, S.H. N<sup>o</sup> 563 3-60' spans, Waite Rd. 169' Span, High Water Elev. = 587.0

**TEST HOLE DATA**



Note: These test hole data were obtained by diligent effort and are believed to correctly represent the character and location of the sub foundation materials, but the State of Ohio does not guarantee their accuracy.

**SITE PLAN**  
S.H. (I.C.H.) 520 SEC. B & C BRS.  
CHAGRIN RIVER  
LAKE COUNTY  
STATE OF OHIO  
SCALE 1"=50' OCT. 1931

Surveyed	Present	Proposed Work
R.B.L.	H.H.C.	Des. Drawn. Ckd. R.
	CER.	W.M.O.
	D.N.O.	J.P.W.

BRIDGE No. LA-283-47

