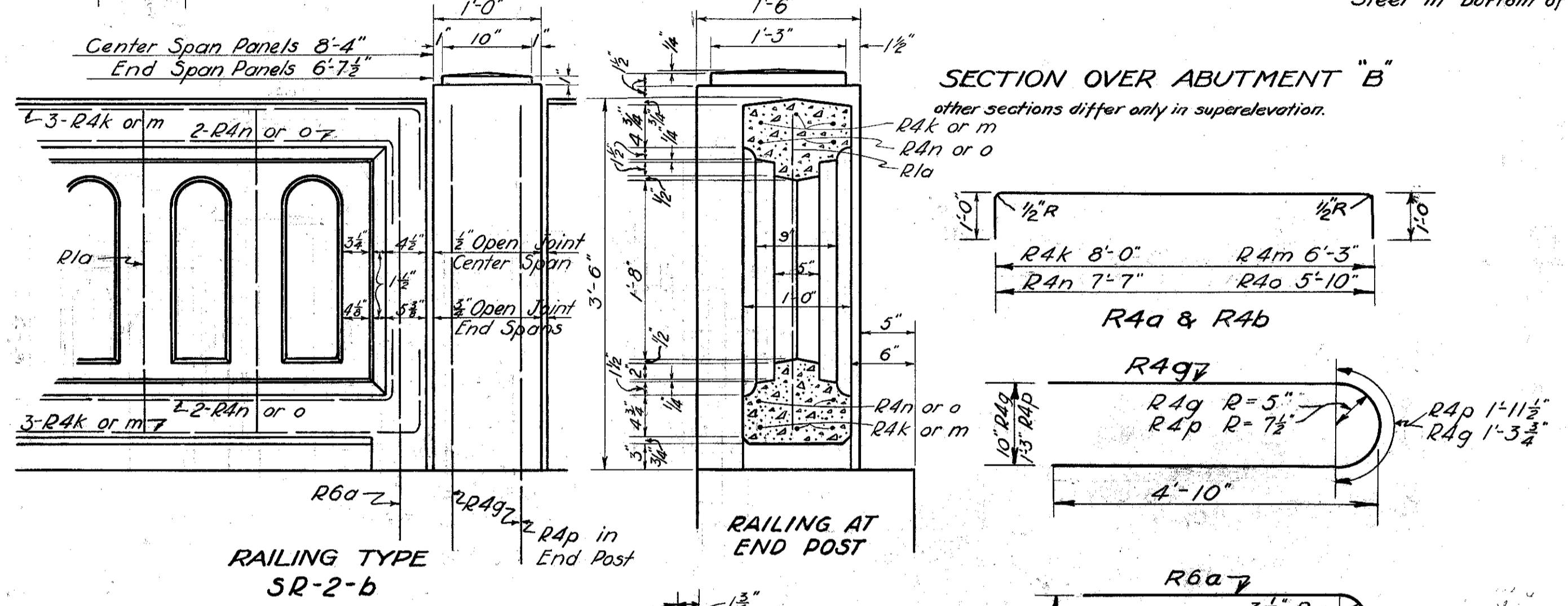
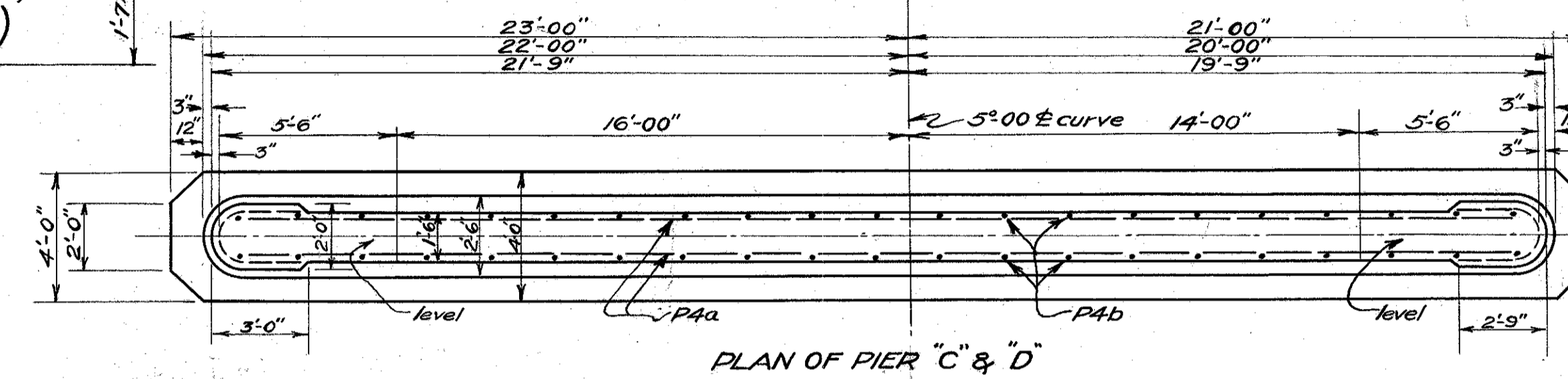
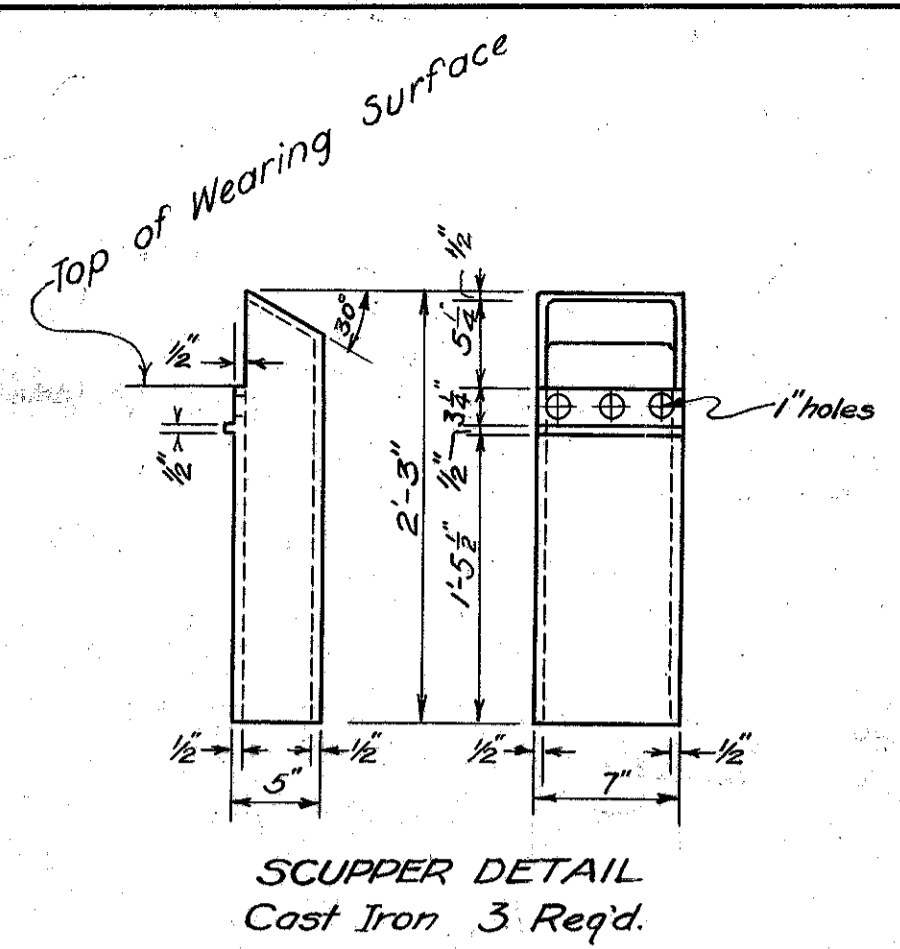
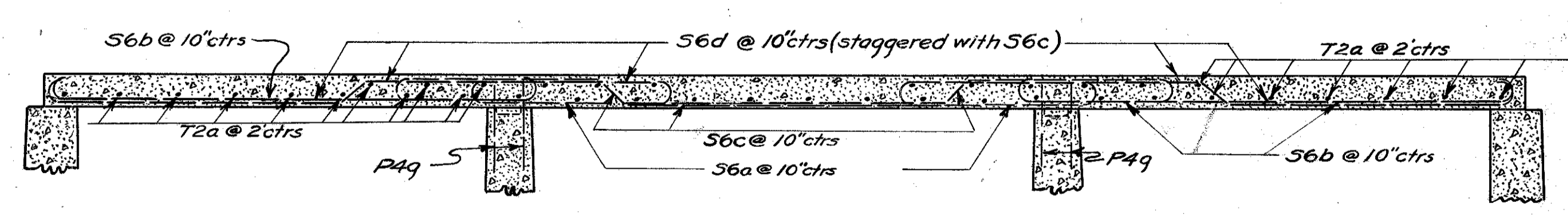
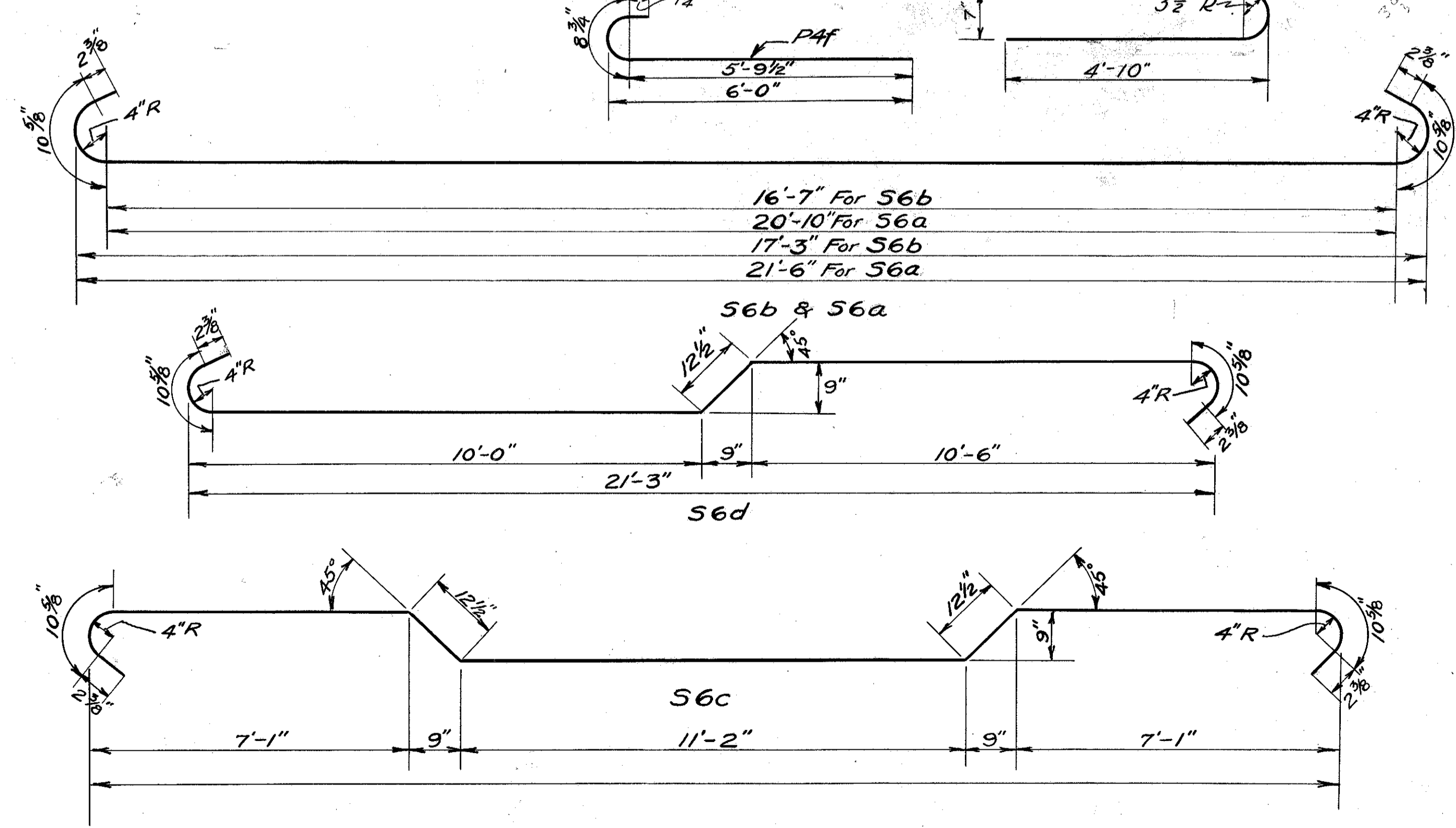
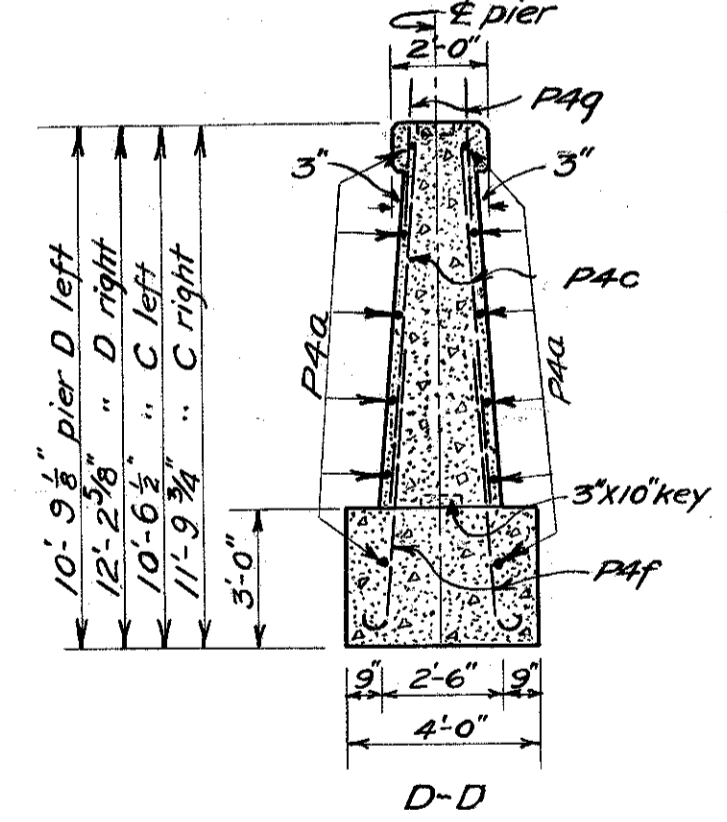
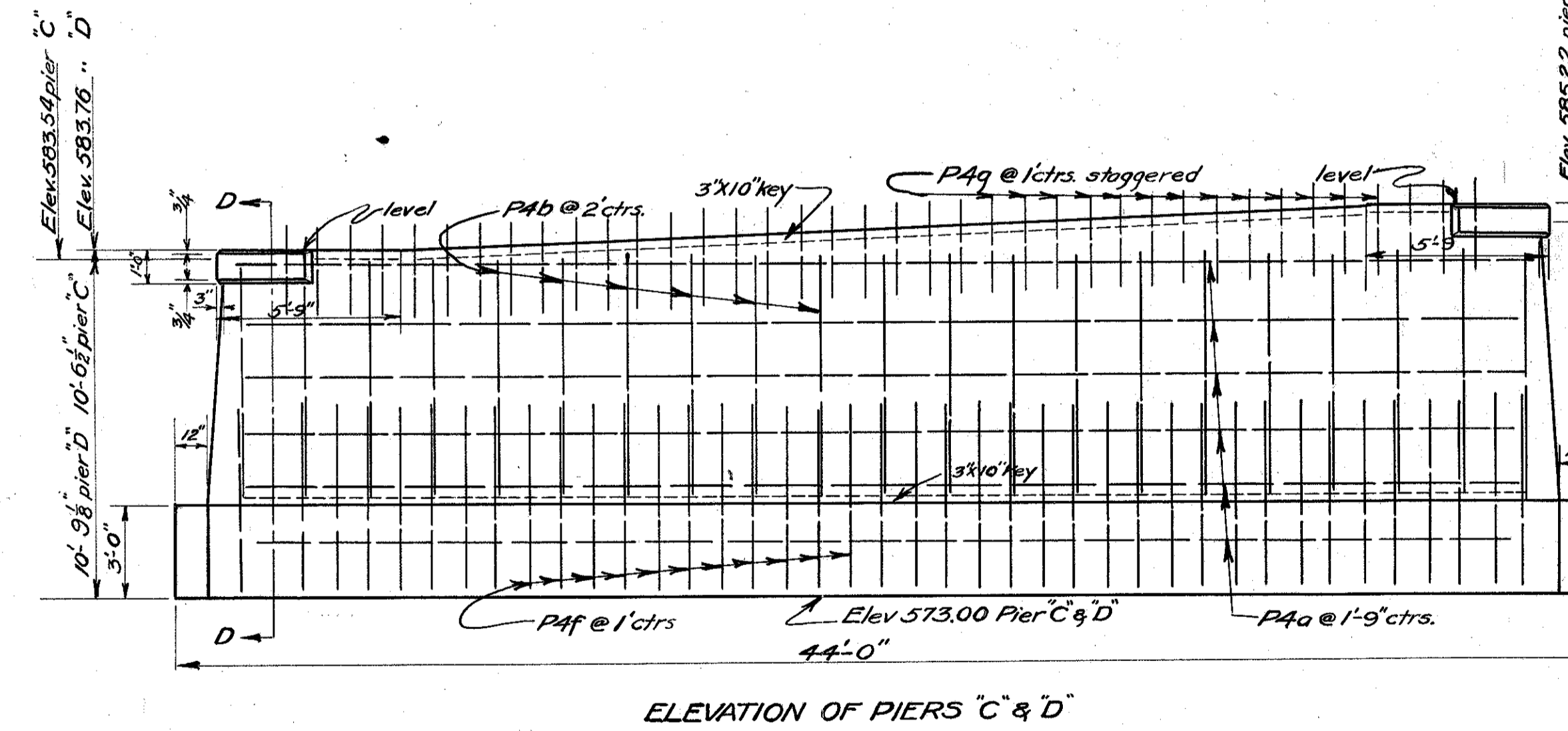


Note: Steel in top of slab is shown as a section over piers.
Steel in bottom of slab is shown as a section over abutment.



Mark	Size	Shape	No	Length	Weight
R1a	3/8"	Straight	110	3'-0"	
R4o	3/8"	Bent	48	7'-9"	included
R4k	3/8"	Bent	24	10'-0"	in railing
R4m	3/8"	Bent	48	8'-3"	for payment
R4n	3/8"	Bent	24	9'-9"	
R4q	3/8"	Bent	20	10'-3"	213
P4a	3/8"	Straight	24	39'-0"	976
P4b	3/8"	"	84	7'-6"	657
P4f	3/8"	Bent	84	6'-8"	584
P4g	3/8"	Straight	76	3'-0"	238
S6a	7/8"	Bent	47	23'-0"	2209
S6b	7/8"	"	94	18'-9"	3601
S6c	7/8"	"	46	29'-0"	2727
S6d	7/8"	"	92	23'-0"	4325
T2a	1/2"	Straight	38	38'-9"	983
R4d	3/8"	Bent	8	10'-6"	88
R6a	7/8"	Bent	24	10'-0"	491
Total					17,092



BR. No. LA-283-46

PIER & SUPERSTRUCTURE DETAILS						
BRIDGE OVER CHAGRIN RIVER OVERFLOW CHANNEL						
S.H. 520			Lake County			
Sec. B & C Bridges			Sta. 166+95			
Designed	Drawn	Traced	Checked	Reviewed	Date	Rev.
AKC	AKC	AKC	AKC	AKC	10/21/0	12/31/31