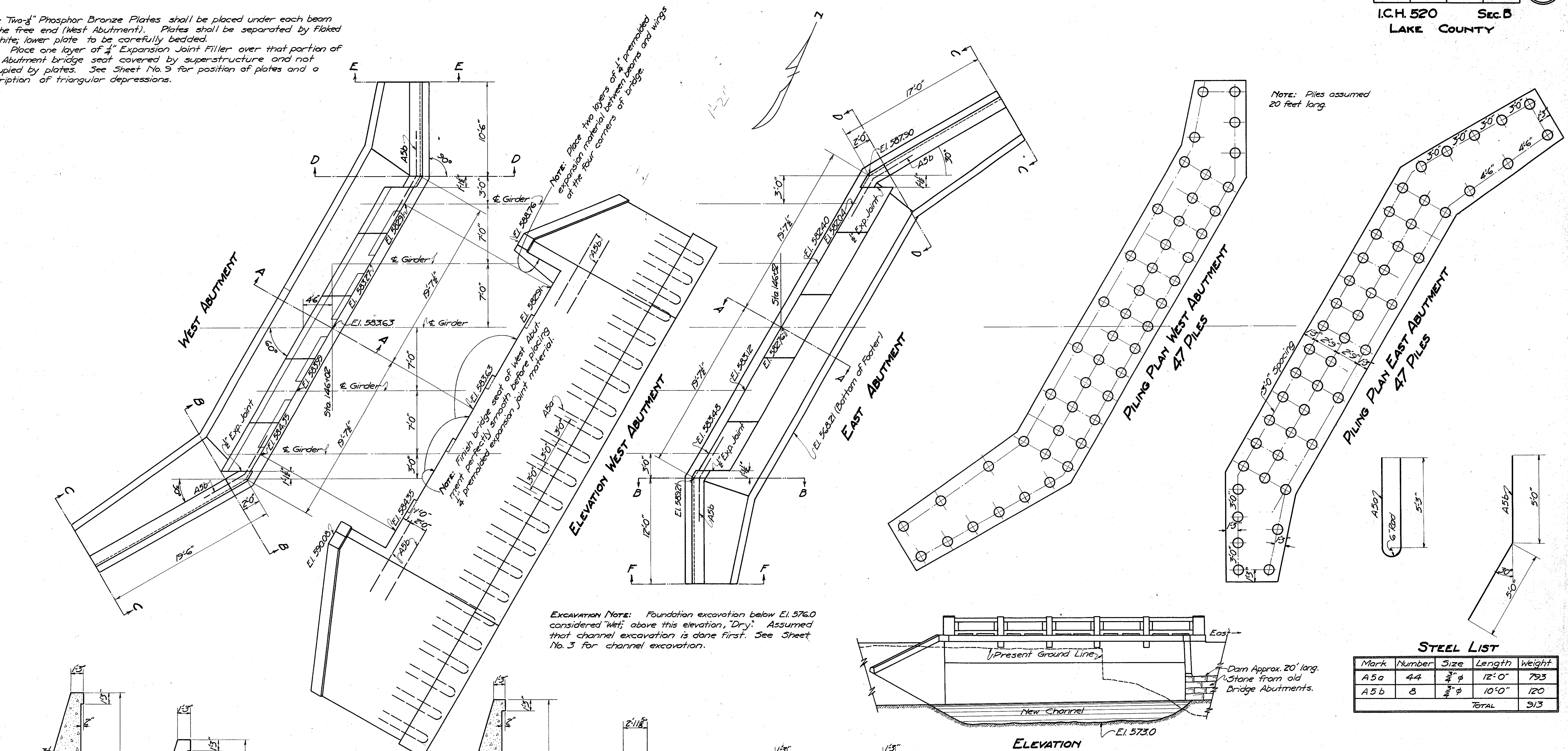


Note: Two $\frac{3}{8}$ " Phosphor Bronze Plates shall be placed under each beam at the free end (West Abutment). Plates shall be separated by Flaked graphite; lower plate to be carefully bedded.
Place one layer of $\frac{1}{4}$ " Expansion Joint Filler over that portion of West Abutment bridge seat covered by super-structure and not occupied by plates. See Sheet No. 3 for position of plates and a description of triangular depressions.

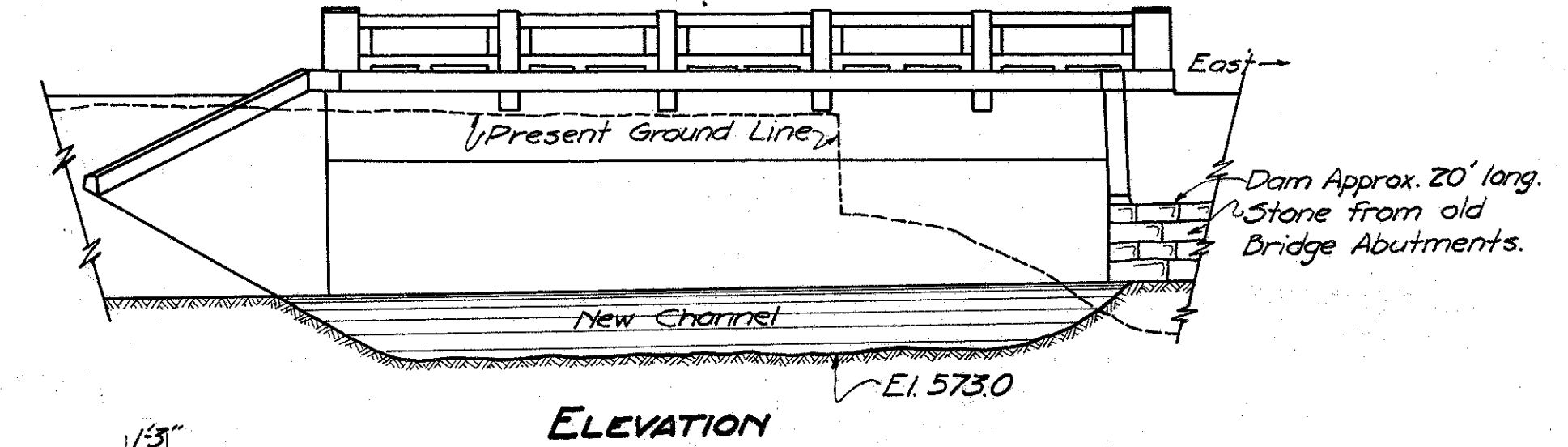
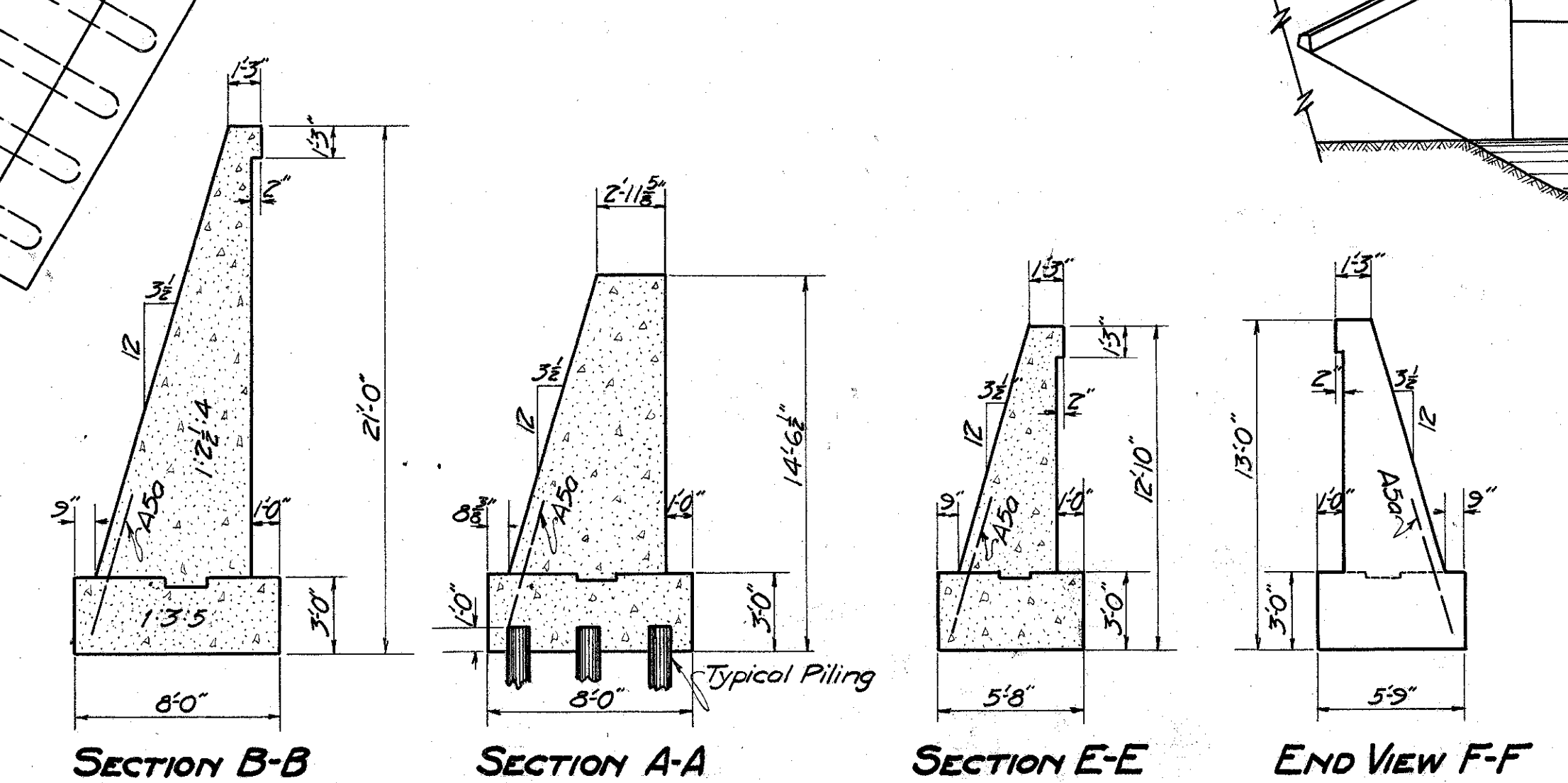
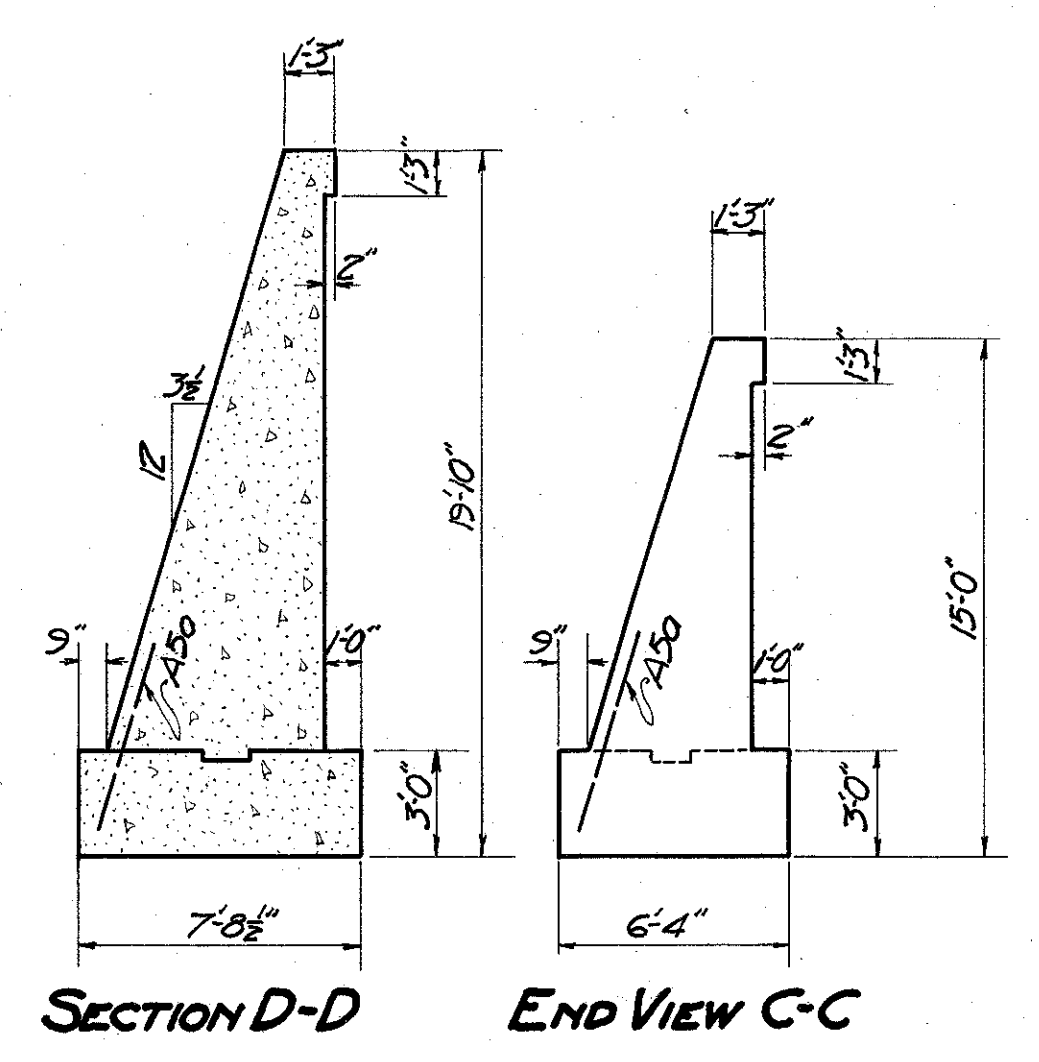
Note: Place two layers of $\frac{1}{2}$ " prepacked expansion material between beams and wings at the four corners of bridge.

Note: Finish bridge seat of West Abutment perfectly smooth before placing prepacked expansion joint material.

Note: Piles assumed 20 feet long.



EXCAVATION NOTE: Foundation excavation below El. 576.0 considered "Wet"; above this elevation, "Dry". Assumed that channel excavation is done first. See Sheet No. 3 for channel excavation.



STEEL LIST

Mark	Number	Size	Length	Weight
A5a	44	$\frac{3}{8}$ " ϕ	12'-0"	793
A5b	8	$\frac{3}{8}$ " ϕ	10'-0"	120
TOTAL				913

ESTIMATED QUANTITIES (ABUTMENTS)

Channel Excavation	2143 cu. yd.
Removing Old Bridge	
Stone Riprap for Dam	30 cu. yd.
Wet Excavation	350 cu. yd.
Dry Excavation	250 cu. yd.
Footings 1:3:5 Conc.	110 cu. yd.
Abt & Wings 1:2 $\frac{1}{2}$:4 Conc.	251 cu. yd.
Reinforcing Steel	913 lbs.
Piling (20' length assumed)	1880 lin. ft.
Detour Bridge & Approaches	

CONCRETE BEAM BRIDGE
50 FT. SPAN 24 FT. ROADWAY
I.C.H. 520 SEC. B. STA. 146+27
LAKE COUNTY
STATE OF OHIO
DEPT. OF HIGHWAYS AND PUBLIC WORKS
DIVISION OF HIGHWAYS
JUNE 1926 BUREAU OF BRIDGES