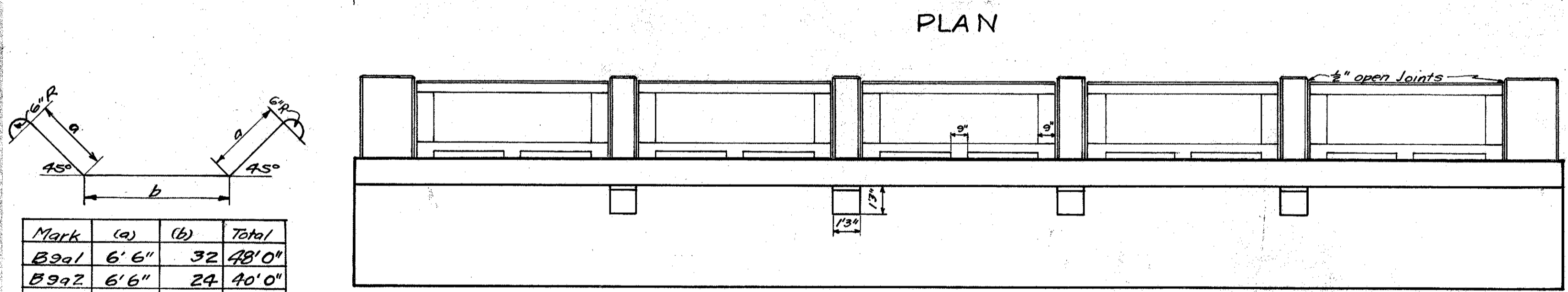
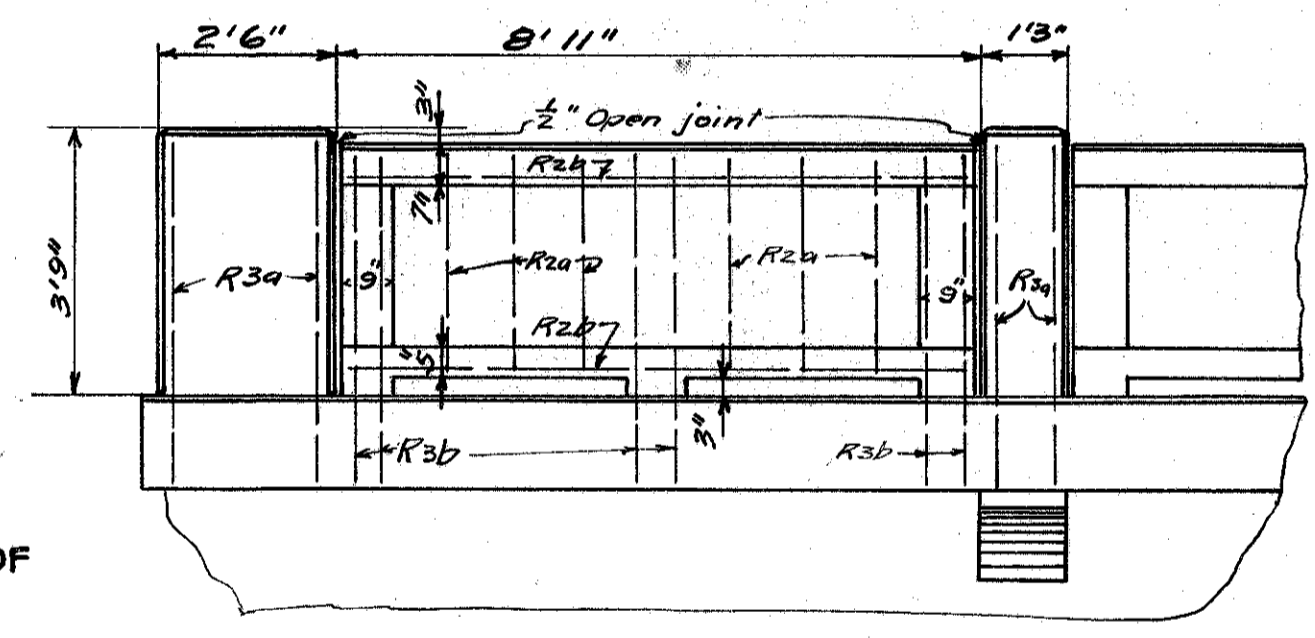


HALF SECTION A-A

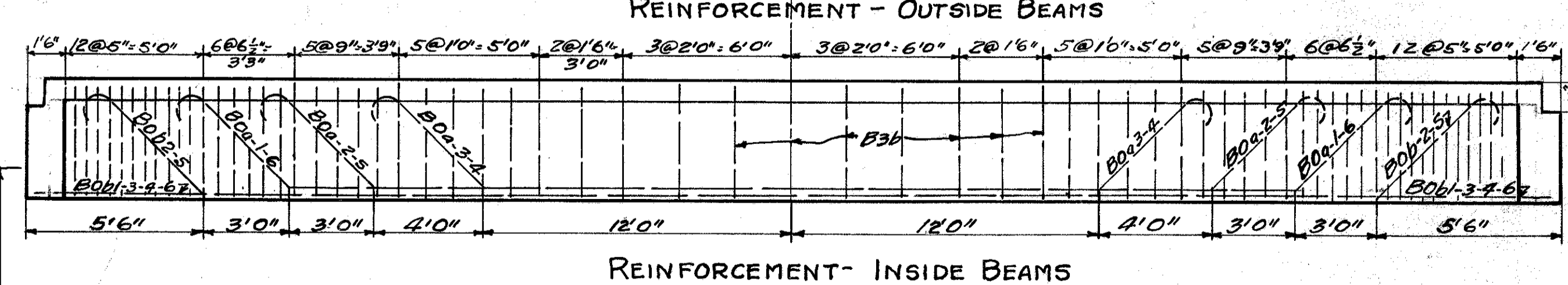
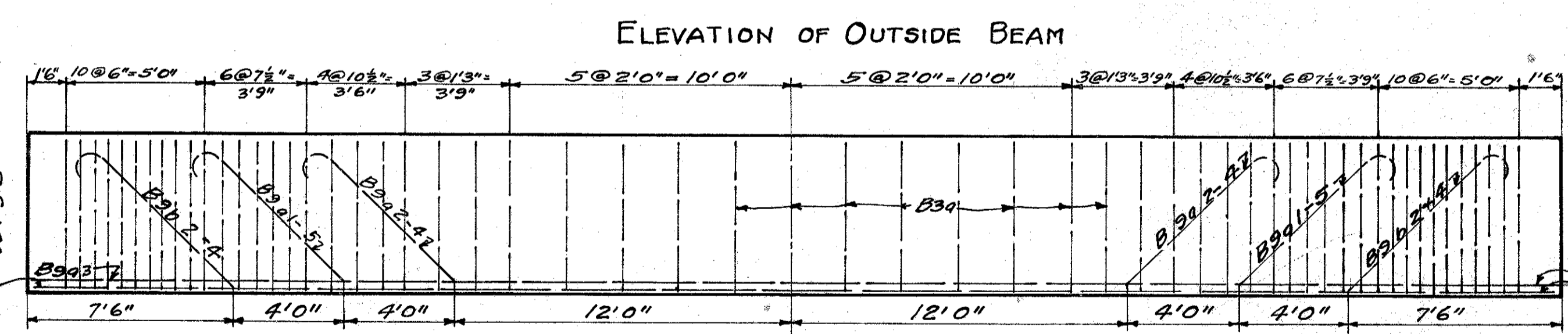
SSb	1'6 1/2"	3'9"	2'6"	3'6"	2'6"	3'6"	2'6"	3'6"	2'6"	3'9"	1'6 1/2"
SSb-13	1'6 1/2"	3'9"	2'6"	3'6"	2'6"	3'6"	2'6"	3'6"	2'6"	3'0"	
12	1'6 1/2"	3'9"	2'6"	3'6"	2'6"	3'6"	2'6"	3'6"	2'6"	3'0"	
11	1'6 1/2"	3'9"	2'6"	3'6"	2'6"	3'6"	2'6"	3'6"	2'6"	3'0"	
10	1'6 1/2"	3'9"	2'6"	3'6"	2'6"	3'6"	2'6"	3'6"	2'6"	3'0"	
9	1'6 1/2"	3'9"	2'6"	3'6"	2'6"	3'6"	2'6"	3'6"	2'6"	3'0"	
8	1'6 1/2"	3'9"	2'6"	3'6"	2'6"	3'6"	2'6"	3'6"	2'6"	3'0"	
7	1'6 1/2"	3'9"	2'6"	3'6"	2'6"	3'6"	2'6"	3'6"	2'6"	3'0"	
6	1'6 1/2"	3'9"	2'6"	3'6"	2'6"	3'6"	2'6"	3'6"	2'6"	3'0"	
5	1'6 1/2"	3'9"	2'6"	3'6"	2'6"	3'6"	2'6"	3'6"	2'6"	3'0"	
4	1'6 1/2"	3'9"	2'6"	3'6"	2'6"	3'6"	2'6"	3'6"	2'6"	3'0"	
3	1'6 1/2"	3'9"	2'6"	3'6"	2'6"	3'6"	2'6"	3'6"	2'6"	3'0"	
2	1'6 1/2"	3'9"	2'6"	3'6"	2'6"	3'6"	2'6"	3'6"	2'6"	3'0"	
1	1'6 1/2"	3'9"	2'6"	3'6"	2'6"	3'6"	2'6"	3'6"	2'6"	3'0"	



Note- Use white portland cement for railing.



Mark	(a)	(b)	Total
B9a1	6'6"	32	48'0"
B9a2	6'6"	24	40'0"
B9a4	6'6"	24	40'0"
B9a5	6'6"	32	48'0"
B9b2	6'6"	40	56'0"
B9b4	6'6"	40	56'0"
B0a1	5'0"	38	51'0"
B0a2	5'0"	32	45'0"
B0a3	5'0"	24	37'0"
B0a4	5'0"	24	37'0"
B0a5	5'0"	32	45'0"
B0a6	5'0"	38	51'0"
B0b2	5'0"	44	57'0"
B0b5	5'0"	44	57'0"



Mark	No.	Size	Length	Shape	Weight	Mark	No.	Size	Length	Shape	Weight	Mark	No.	Size	Length	Shape	Weight
SSa	39	3/8"	29'6"	S	1728	SSb10	2	3/8"	11'0"	B	33	B0b4	3	1 1/4"	54'6"	S	869
SSa1	2	6'0"	S	18	SSb11	2	9'0"	B	27	B0b5	3	57'0"	B	907			
SSa2	2	7'9"	S	23	SSb12	2	7'0"	B	21	B0b6	3	54'6"	S	869			
SSa3	2	9'6"	S	29	SSb13	2	5'6"	B	17	B3a	134	1/2"	14'6"	B	1652		
SSa4	2	11'0"	S	33	S2a	38	1/2"	27'9"	S	704	B3b	201	11'0"	B	1879		
SSa5	2	12'9"	S	38	B9a1	2	1 1/8"	48'0"	B	413							
SSa6	2	14'6"	S	44	B9a2	2	40'0"	B	344	R3a	48	1/2"	4'6"	S	184		
SSa7	2	16'3"	S	49	B9a3	2	54'6"	S	469	R3b	60	4'3"	S	217			
SSa8	2	18'0"	S	54	B9a4	2	40'0"	B	344	R2a	60	1/2"	2'9"	S	110		
SSa9	2	19'9"	S	59	B9a5	2	48'0"	B	413	R2b	40	8'6"	S	227			
SSa10	2	21'6"	S	65	B9b1	2	54'6"	S	469								
SSa11	2	23'0"	S	69	B9b2	2	56'0"	B	482	AP5a	86	3/8"	16'6"	S	2131		
SSa12	2	24'9"	S	74	B9b3	2	54'6"	S	469	AP2a	8	1/2"	16'6"	S	88		
SSa13	2	26'6"	S	80	B9b4	2	56'0"	B	482								
SSb	39	30'9"	B	1801	B9b5	2	54'6"	S	469								
SSb1	2	27'9"	B	83	B0a1	3	1 1/4"	51'0"	B	811							
SSb2	2	26'0"	B	78	B0a2	3	45'0"	B	715								
SSb3	2	24'0"	B	72	B0a3	3	37'0"	B	588								
SSb4	2	22'3"	B	67	B0a4	3	37'0"	B	588								
SSb5	2	20'3"	B	61	B0a5	3	45'0"	B	715								
SSb6	2	18'6"	B	56	B0a6	3	51'0"	B	811								
SSb7	2	16'6"	B	50	B0b1	3	54'6"	S	869								
SSb8	2	14'9"	B	44	B0b2	3	57'0"	B	907								
SSb9	2	12'9"	B	38	B0b3	3	54'6"	S	869								

SUPER-STRUCTURE AND APPROACH SLAB QUANTITIES  
 1-2-3 Conc. 1763cu.yds.  
 Reinforcing Steel 25875 lbs  
 Concrete Railing (W/c cement) 109 lin.ft.  
 Prem. Exp. Jt filler 190 sq.ft.  
 Phosphor Bronze Plates 90 lbs.

CONCRETE BEAM BRIDGE  
 50FT. SPAN 24FT. ROADWAY  
 I.C.H. 520-SEC B-STA. 146+27  
 LAKE COUNTY  
 STATE OF OHIO  
 DEPT OF HIGHWAYS AND PUBLIC WORKS  
 DIVISION OF HIGHWAYS  
 JUNE 1926 BUREAU OF BRIDGES

Des. by W.S.H. Drawn by E.H.B. Checked by W.H.C. 6-26-26